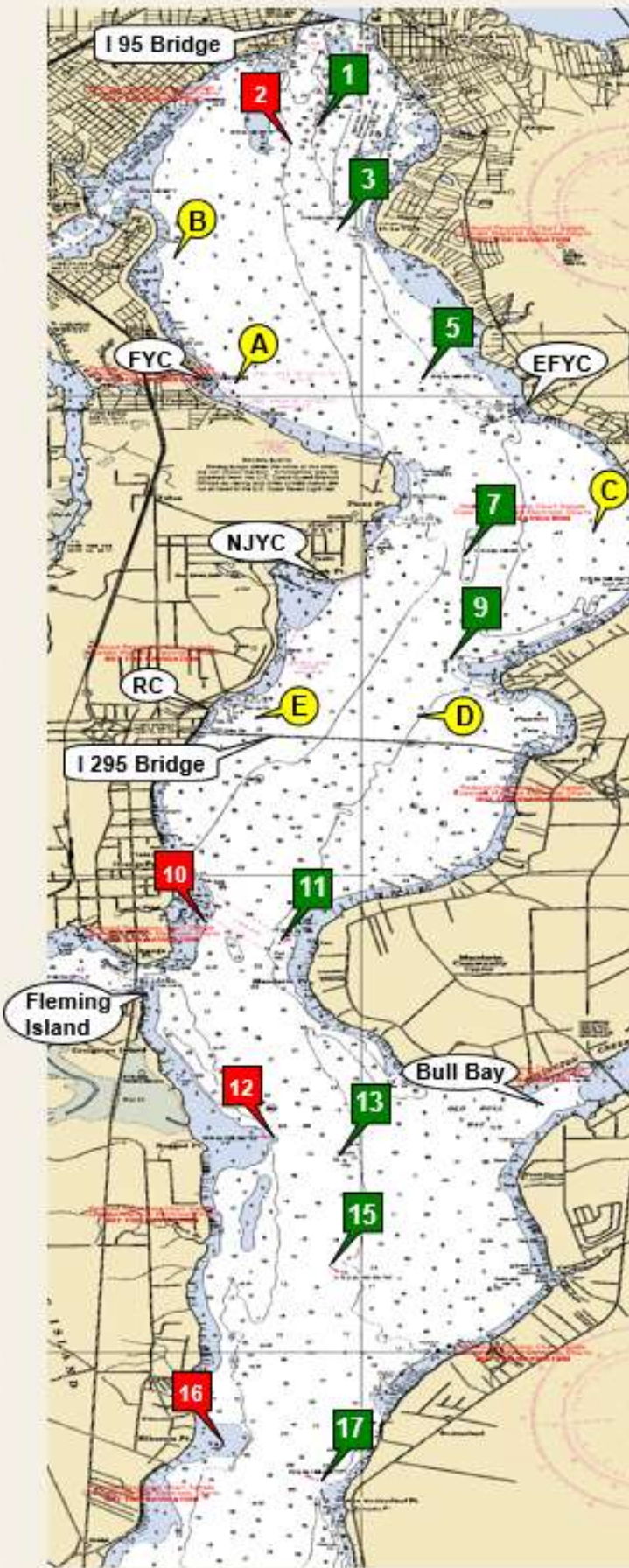




| Distance | nm |
|-----------|-------|
| 1 to 3 | 1.039 |
| 1 to 5 | 2.787 |
| 1 to 7 | 4.643 |
| 1 to A | 2.793 |
| 1 to B | 1.570 |
| 3 to 5 | 1.773 |
| 3 to 7 | 3.615 |
| 3 to 9 | 4.638 |
| 3 to A | 1.829 |
| 3 to B | 1.126 |
| 3 to C | 3.763 |
| 5 to 7 | 1.863 |
| 5 to 9 | 2.926 |
| 5 to A | 1.468 |
| 5 to B | 2.299 |
| 5 to C | 2.029 |
| 5 to D | 3.486 |
| 7 to 9 | 1.095 |
| 7 to C | 0.977 |
| 7 to D | 1.697 |
| 7 to E | 2.240 |
| 9 to C | 1.726 |
| 9 to D | 0.618 |
| 9 to E | 1.486 |
| A to B | 1.523 |
| A to C | 3.140 |
| B to C | 4.303 |
| C to D | 2.328 |
| C to E | 3.111 |
| D to E | 1.127 |
| 11 to 13 | 2.317 |
| 11 to 15 | 3.400 |
| 11 to 17 | 5.631 |
| 11 to 17A | 6.836 |
| 13 to 15 | 1.109 |
| 13 to 17 | 3.360 |
| 13 to 17A | 4.575 |
| 13 to 18 | 5.585 |
| 15 to 17 | 2.252 |
| 15 to 17A | 3.467 |
| 15 to 18 | 4.476 |
| 17 to 17A | 1.216 |
| 17 to 18 | 2.225 |
| 17A to 18 | 1.010 |
| 18 to 20 | 2.038 |



- From 2011
USCG Light List
- Green 1**
N 30° 17.813
W 81° 40.411
- Red 2**
N 30° 17.628
W 81° 40.635
- Green 3**
N 30° 16.780
W 81° 40.259
- Green 5**
N 30° 15.142
W 81° 39.466
- Green 7**
N 30° 13.305
W 81° 39.077
- Green 9**
N 30° 12.216
W 81° 39.237
- Red 10**
N 30° 09.513
W 81° 41.399
- Green 11**
N 30° 09.305
W 81° 40.794
- Red 12**
N 30° 07.240
W 81° 40.800
- Green 13**
N 30° 07.036
W 81° 40.224
- Green 15**
N 30° 05.926
W 81° 40.283
- Red 16**
N 30° 04.038
W 81° 41.254
- Green 17**
N 30° 03.671
W 81° 40.393
- Green 17A**
N 30° 02.457
W 81° 40.522
- Red 18**
N 30° 01.445
W 81° 40.551
- Green 19**
N 30° 01.335
W 81° 40.279
- Red 20**
N 29° 59.822
W 81° 39.126

Also From 2011
USCG Light List

Race Can "A"
N 30° 15.090
W 81° 41.160

Race Can "B"
N 30° 16.581
W 81° 41.539

Race Can "C"
N 30° 13.564
W 81° 37.989

Race Can "D"
N 30° 11.648
W 81° 39.522

Race Can "E"
N 30° 11.648
W 81° 40.822