

The Rudder Club of Jacksonville Spring, Summer, and Fall Series Races 2026

The Rudder Club of Jacksonville
8533 Malaga Ave.
Jacksonville, FL 32244

NOTICE OF RACE

1. RULES:

- 1.1 The Spring, Summer, and Fall Series will be governed by the rules as defined in *The Racing Rules of Sailing 2025-2028 (RRS)*.
- 1.2 This NOR applies for all races in the Rudder Club Series races for the year 2026.
- 1.3 Racing Rule A9 is changed by NOR 8.4.
- 1.4 Appendix V (including One Turn Penalty) will be in effect.

2. **ADVERTISING:** Advertising shall not be displayed.

3. ELIGIBILITY AND ENTRY:

- 3.1. The races are open to all boats of all classes.
- 3.2. Eligible boats may enter by registering on the official web site at
Spring
<https://www.regattanetwork.com/event/30627>
Summer
<https://www.regattanetwork.com/event/30654>
Fall
<https://www.regattanetwork.com/event/30655>

All registrations will be online.

- 3.3. Separate registration is required for the Spring, Summer, and Fall Series.
- 3.4. Non-Rudder Club member's entry fee is \$15.00. Rudder Club member entry fees are in accordance with Club By-Laws. Rudder Club Members should choose Club Charge at the Regatta Network website, and they will not be billed.
- 3.5. For the entire series, anticipated classes are Portsmouth Monohull and Portsmouth Multihull. Portsmouth Monohull includes Offshore Classes. Races on February 22 and March 22 are part of the Spring PHRF Series and will have PHRF Performance and PHRF Cruiser classes. Races on October 4 and November 1 are part of the Fall PHRF Series and will have PHRF Performance and PHRF Cruiser classes.
- 3.6. A minimum of three registered boats is necessary to constitute a class.
- 3.7. One design classes of over three competitors racing within a Portsmouth

fleet may be scored as a one design class as well.

Portsmouth ratings for Centerboard, Keel, Multihull and Offshore Classes are available to US Sailing Members at
<https://www.ussailing.org/competition/offshore/portsmouth-yardstick-table-pre-calculated-classes/>

4. SCHEDULE:

- 4.1 Series races are scheduled as follows. Changes of scheduled dates will be promulgated by a change to this NOR.

Spring Series #1 - Sun. 1/11/2026
Spring Series #2 - Sun. 1/25/2026
Spring Series #3 - Sun. 2/08/2026
Spring Series #4 - Sun. 2/22/2026
Spring Series #5 - Sun. 3/08/2026
Spring Series #6 - Sun. 3/22/2026
Make-up Date – Sun. 4/12/2026

Summer Series #1 - Sat. 6/06/2026
Summer Series #2 - Sat. 6/20/2026
Summer Series #3 - Sat. 7/11/2026
Summer Series #4 - Sat. 7/18/2026
Summer Series #5 - Sat. 7/25/2026
Summer Series #6 - Sat. 8/8/2026
Make-up Date – Sat. 8/23/2026

Fall Series #1 - Sun. 09/13/2026
Fall Series #2 - Sun. 09/27/2026
Fall Series #3 - Sun. 10/04/2026
Fall Series #4 - Sun. 10/18/2026
Fall Series #5 - Sun. 11/01/2026
Fall Series #6 - Sun. 11/15/2026

4.2 Registration:

1200 to 1230 (Spring and Fall)
1400 to 1430 (Summer)

4.3 Competitors Meeting:

1300 (Spring and Fall)
1500 (Summer)

4.4 Warning Signal for First Class:

1355 (Spring and Fall)
1555 (Summer)

- 4.5 There will be a minimum of one race for the Portsmouth classes; other races will follow until terminated by the race committee. A maximum of three races will be conducted on each race day.

4.6 In accordance with US Sailing prescription L 5.6, flag "A" displayed, with no sound, while boats are finishing means "No more racing today."

- 5 SAILING INSTRUCTIONS:** The Sailing Instructions will be posted on the Official websites:

Spring

<https://www.regattanetwork.com/event/30627>

Summer

<https://www.regattanetwork.com/event/30654>

Fall

<https://www.regattanetwork.com/event/30655>

the Rudder Club official bulletin board on the north exterior wall of the club, and at registration.

- 6 VENUE:** The racing area will be in the St. Johns River between the Buckman Bridge to the South and the Fuller Warren Bridge to the North.

- 7 COURSE:** Courses sailed will be shown in an addendum to the Sailing Instructions and displayed on a white board on the committee boat.

8 SCORING:

8.1 Scores for each day's racing will be Low Point in accordance with Appendix A of the RRS. One race is necessary to constitute a day's racing.

8.2 Portsmouth boats will be scored using USSA Portsmouth ratings. PHRF boats will be scored Time on Distance using PHRF ratings. PHRF boats should apply for a 2026 rating from FCSA.

8.3 A boat's total score for the Series will be determined by the sum of its scores in each race of each Series (no throw-out races). To qualify for inclusion in the final Series results, a boat shall compete in (i.e., come to the starting area) at least 60 percent of the races completed. PHRF Performance and Cruiser Classes will not be included in the total scoring for the series. Results for each PHRF Performance and Cruiser Class race in the series will be reported to First Coast Sailing Association (FCSA) for scoring in accordance with PHRF Rules and Scoring Matrix for the St. Johns River Series.

8.4 Scoring for each series (PHRF Classes excluded) will be based on the US SAILING prescription for scoring a long series.

<https://www.ussailing.org/competition/rules-officiating/racing-rules/scoring-a-long-series/>

8.5 The HIGH-POINT PERCENTAGE SCORING SYSTEM will apply (PHRF Classes excluded). In order to qualify a boat must have competed (come to the starting area) in at least sixty (60) percent of the races completed. This changes Rule A9.

9 PENALTIES

Appendix V (including the One Turn Penalty Rule) will be in effect.

- 10 NOTICE TO COMPETITORS:** Notices to competitors will be posted on the Event Web Sites: Spring

<https://www.regattanetwork.com/event/30627>

Summer

<https://www.regattanetwork.com/event/30654>

Fall

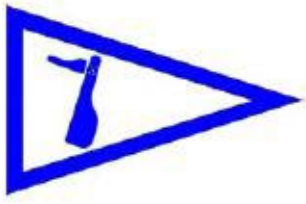
<https://www.regattanetwork.com/event/30655>

and on the Bulletin Board located on the Rudder Club's North exterior wall.

- 10 PRIZES** Series prizes will be awarded for the Spring and Fall Series after racing concludes on the final day of each series (PHRF Classes excluded). There will be no prizes for daily racing.

- 11 DISCLAIMER OF LIABILITY** Sailing is an activity that has an inherent risk of damage and injury. Competitors in these series are participating entirely at their own risk. See RRS 4, Decision to Race. Completion and submission of a registration form for these races constitute an acceptance of an agreement to abide by the Racing Rules of Sailing, this Race Notice and the Sailing Instructions.

- 12 FURTHER INFORMATION** For further information contact Jon Hamilton 904-635-9270, raceoffice@rudderclub.com or the Rudder Club, 8533 Malaga Ave., Jacksonville, FL 32244, 904-264-4094, office@rudderclub.com.

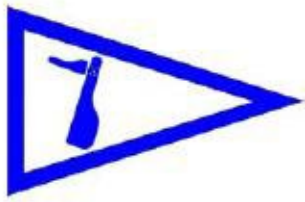


The Rudder Club of Jacksonville Spring Series Races 2026

*The Rudder Club of Jacksonville
8533 Malaga Ave.
Jacksonville, FL 32244*

NOTICE OF RACE Change #1

1. Spring Series Race # 2 is February 1, 2026.



Spring, Summer, and Fall Series Races 2026

The Rudder Club of Jacksonville
8533 Malaga Ave.
Jacksonville, FL 32244

SAILING INSTRUCTIONS

1. RULES:

- 1.1 The Spring, Summer and Fall Series will be governed by the rules as defined in *The Racing Rules of Sailing 2025-2028(RRS)* and the Notice of Race.
- 1.2 These Sailing Instructions apply for all races in the Rudder Club Series Races for the year 2026.
- 1.3 Racing Rule A9 is changed by SI 14.4.
- 1.4 Appendix V (including the One Turn Penalty) will be in effect.
- 1.5 PHRF Rules of First Coast Sailing Association (FCSA) shall apply for PHRF Classes.

2 NOTICE TO COMPETITORS: Notices to competitors will be posted on the Event Web Sites:

Spring

<https://www.regattanetwork.com/event/30627>

Summer

<https://www.regattanetwork.com/event/30654>

Fall

<https://www.regattanetwork.com/event/30655>

and on the Official Bulletin Board located on the Rudder Club's North exterior wall.

3 CHANGES IN THE SAILING INSTRUCTIONS:

Any changes to the Sailing Instructions will be posted on the Event Web Site and on the Official Bulletin Board no later than 1145 on the day of the race. Oral changes to the Sailing Instructions may be communicated to each boat prior to its warning signal and are allowed only on the water.

4 SIGNALS MADE ASHORE:

- 4.1 Signals made ashore will be displayed from the flag pole located on the North side of the Rudder Club.
- 4.2 The warning signal for the first class will be made not less than 30 minutes after Code Flag AP is lowered (if ashore).

5 SCHEDULE OF RACES:

5.1 Series races are scheduled as follows: Changes of scheduled dates will be promulgated by a change to the Notice of Race.

Spring Series #1 - Sun. 1/11/2026
 Spring Series #2 - Sun. 2/01/2026
 Spring Series #3 - Sun. 2/08/2026
 Spring Series #4 - Sun. 2/22/2026
 Spring Series #5 - Sun. 3/08/2026
 Spring Series #6 - Sun. 3/22/2026

Make-up Date – Sun. 4/12/2026

Summer Series #1 – Sat. 6/06/2026
 Summer Series #2 - Sat. 6/20/2026
 Summer Series #3 - Sat. 7/11/2026
 Summer Series #4 – Sat. 7/18/2026
 Summer Series #5 – Sat. 7/25/2026
 Summer Series #6 – Sat. 8/08/2026
 Make-up Date – Sat. 8/22/2026

Fall Series #1 - Sun. 09/13/2026
 Fall Series #2 - Sun. 09/27/2026
 Fall Series #3 - Sun. 10/04/2026
 Fall Series #4.- Sun. 10/18/2026
 Fall Series #5 - Sun. 11/01/2026
 Fall Series #6 - Sun. 11/15/2026

5.2 Registration: 1200 to 1230 (Spring and Fall)
1400 to 1430 (Summer)

5.3 Competitors' Meeting: 1300 (Spring and Fall)
1500 (Summer)

5.4 Warning Signal for First Class:
1355 (Spring and Fall)
1555 (Summer)

There will be a minimum of one race for the Portsmouth classes; other races will follow as determined by the race committee.

5.5 A maximum of three races will be conducted on each race day.

5.6 In accordance with US Sailing prescription L5.6, flag "A" displayed, with no sound, while boats are finishing means "No more racing today."

6 CLASS FLAGS:

Pennants as depicted under Race Signals in the RRS.

Class		Pennant
Portsmouth Multihull	P1	
Portsmouth Monohull	P2	
PHRF Performance	P3	
PHRF Cruiser	P4	

7 RACING AREA

The racing area will be in the St. Johns River between the Buckman Bridge to the south and the Fuller Warren Bridge to the north as depicted on NOAA Chart 11492.

8 COURSES:

- 8.1. Courses for each class will be as shown in addendum A, unless another course is announced at the competitors' meeting (and posted on the notice board and on the Regatta Network site).
- 8.2 Courses may be round the buoy courses from addendum A or one using river marks from Addendum C. Addendum C courses will be displayed on the Committee Boat using the Mark designators as displayed on Addendum C.

9 MARKS:

- 9.1 Marks may be either government navigation marks as Depicted on NOAA Chart 11492 or navigation marks and FCSA marks as depicted on Addendum C. Government Marks will be designated by their number as appearing on the chart. If using River Marks (Addendum C), in addition to the marks shown, an inflatable orange mark may be set to windward and designated "X" (XRAY).
- 9.2 **Mark Descriptions** – Marks will be as follows:
Mark 1 – Inflated Yellow Cylinder
Mark 2 – Inflated Yellow Cylinder

10 START

The starting line will be between an orange flag flown on the Race Committee Boat and a mark set to the left side of the Committee Boat relative to the first leg of the course. In the absence of a Race Officer (RO) or assistants, the RO or competitors may, through their fleet representative, opt to conduct a Gate (Rabbit) Start.

11 FINISH

The finish line will be between a blue flag on the committee boat and a mark set to the right side of the Committee Boat relative to the final leg of the course. The race committee may opt to set a white mark to the left of the committee boat relative to the final leg of the course. This will be announced in a Notice to Competitors posted on the bulletin board.

12 TIME LIMIT

The time limit for the first yacht in each starting class to finish is 90 minutes from her start.

13 PROTESTS

- 13.1 Protest forms are available at the Rudder Club Race Office.
- 13.2 For each class the protest time is two hours after the last boat has finished the last race of the day.
- 13.3 Appendix T, Arbitration, is in effect.

14 SCORING

- 14.1 A boat's total score for a day's racing will be Low Point in accordance with Appendix A of the RRS. One race is necessary to constitute a daily series.
- 14.2 A boat's total score for the Series will be determined by the sum of its scores in each race of each Series (no throw-out races). To qualify for inclusion in the final

Series results, a boat shall compete in (i.e., come to the starting area) at least 60 percent of the races completed.

14.3 Scoring for each series will be based on the US

SAILING prescription for scoring a long series and described in SIs 14.5 – 14.7.

- 14.4 In order to qualify a boat must have competed (come to the starting area) in at least sixty percent of the races completed. This changes rule A9.

14.5 The HIGH-POINT PERCENTAGE SCORING

SYSTEM will apply as follows. "N" is defined as the number of boats that compete in a particular race. Each boat finishing that race and not thereafter retiring or being disqualified will be scored as follows:

Finishing place Score

First	N
Second	N-1
Third	N-2
Fourth	N-3

Each place thereafter subtract 1 point

- 14.6 All other boats that compete in that race, including any that finish and thereafter retire or are disqualified, will score 0 points. Boats that do not compete in that race (DNC) will not be scored.
- 14.7 The series score for each boat will be a percentage calculated as follows: divide the sum of her race scores by the sum of the points she would have scored if she had placed first in every race in which she competed; multiply the result by 100. The qualified boat with the highest series score is the winner, and others are ranked accordingly.
- 14.8 The Spring, Summer, and Fall Series will be scored separately.
- 14.9 PHRF Performance and Cruiser Classes will not be included in the total scoring for the series. Results for each PHRF Performance and Cruiser Class race in the series will be reported to First Coast Sailing Association (FCSA) for scoring in accordance with PHRF Rules and Scoring Matrix for the St. Johns River Series.

15 SAFETY REGULATIONS

- 15.1 Boats shall attempt to check in with the Race Committee by sailing past on the non-course side prior to their class Warning Signal.
- 15.2 Boats withdrawing from a race prior to finishing shall make every effort to ensure that Race Committee is notified that they have dropped out
- 15.3 All competitors are required to conform to the U.S. Coast Guard regulations and the RRS concerning personal floatation devices and other required equipment.
- 15.4 Yachts shall not impede the passage of a vessel which can safely navigate only within a narrow channel and remain clear of commercial fishing vessels while they

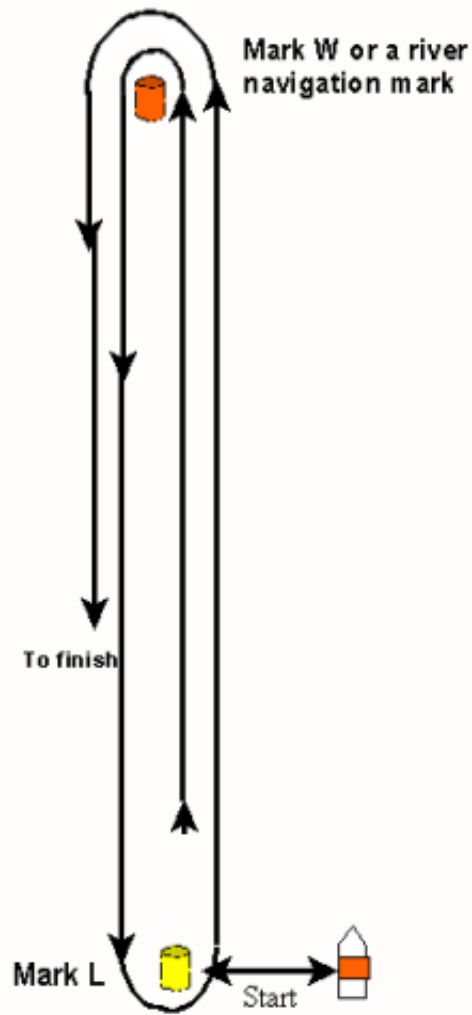
are fishing or vessels with restricted ability to maneuver.

15.5 In accordance with Rule 42.3(i), providing no significant advantage is gained, a boat may employ propulsion using an engine or other method to remain clear of a non-racing vessel when required by Inland Rules.

15.6 The Race Committee will maintain a listening watch on Marine VHF Channel 78.

16 PARTICIPATION: Sailing is an activity that has an inherent risk of damage and injury. Competitors in this series are participating entirely at their own risk. See RRS 4, Decision to Race. Completion and submission of a registration form for these races constitute an acceptance of and agreement to abide by the Racing Rules of Sailing, the Race Notice and these Sailing Instructions.

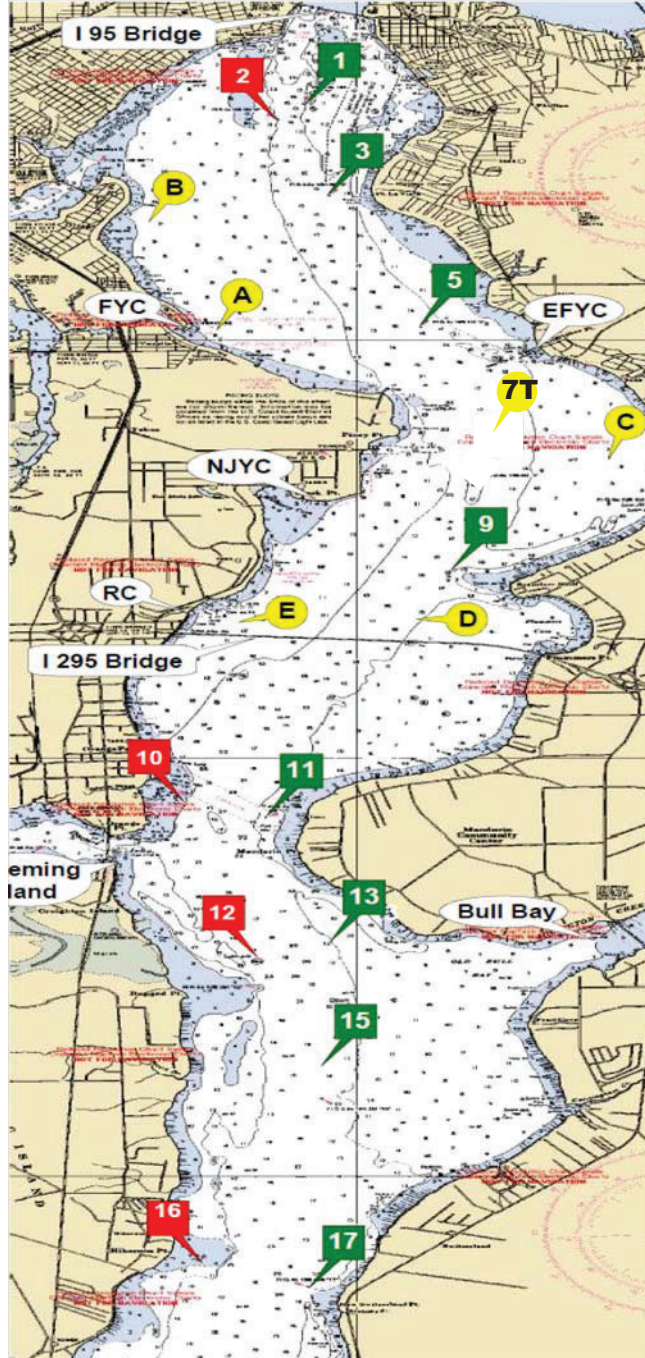
Attachment A



XF

First Coast Sailing Association Race Marks

Distance	nm
1 to 3	1.039
1 to 5	2.787
1 to 7T	4.643
1 to A	2.793
1 to B	1.570
3 to 5	1.773
3 to 7T	3.615
3 to 9	4.638
3 to A	1.829
3 to B	1.126
3 to C	3.763
5 to 7T	1.863
5 to 9	2.926
5 to A	1.468
5 to B	2.299
5 to C	2.029
5 to D	3.486
7 to 9	1.095
7 to C	0.977
7 to D	1.697
7 to E	2.240
9 to C	1.726
9 to D	0.618
9 to E	1.486
A to B	1.523
A to C	3.140
B to C	4.303
C to D	2.328
C to E	3.111
D to E	1.127
11 to 13	2.317
11 to 15	3.400
11 to 17	5.631
11 to 17A	6.836
13 to 15	1.109
13 to 17	3.360
13 to 17A	4.575
13 to 18	5.585
15 to 17	2.252
15 to 17A	3.467
15 to 18	4.476
17 to 17A	1.216
17 to 18	2.225
17A to 18	1.010
18 to 20	2.038



Green 1
N 30° 17.813
W 81° 40.411

Red 2
N 30° 17.628
W 81° 40.635

Green 3
N 30° 16.780
W 81° 40.259

Green 5
N 30° 15.142
W 81° 39.466

Green 7
N 30° 13.305
W 81° 39.077

See Race Mark "7T"

Green 9
N 30° 12.216
W 81° 39.237

Red 10
N 30° 09.513
W 81° 41.399

Green 11
N 30° 09.305
W 81° 40.794

Red 12
N 30° 07.240
W 81° 40.800

Green 13
N 30° 07.036
W 81° 40.224

Green 15
N 30° 05.926
W 81° 40.283

Red 16
N 30° 04.038
W 81° 41.254

Green 17
N 30° 03.671
W 81° 40.393

Green 17A
N 30° 02.457
W 81° 40.522

Red 18
N 30° 01.445
W 81° 40.551

Green 19
N 30° 01.335
W 81° 40.279

Red 20
N 29° 59.822
W 81° 39.126

**Note: If set these marks will be an inflatable mark.

Race Mark "A"
N 30° 15.090 W 81° 41.160

Race Mark "B"
N 30° 11.648 W 81° 39.522

Race Mark "C"
N 30° 13.564 W 81° 37.989

Race Mark "D"
N 30° 16.581 W 81° 41.539

Race Mark "E"
N 30° 11.648 W 81° 40.822

Race Mark "7T"
N 30° 13.305 W 81° 39.077