

**THE RIVER CITY REGATTA**  
**March 15 2025**  
**The Rudder Club of Jacksonville**  
**8533 Malaga Avenue**  
**Jacksonville, FL 32244**

**Notice of Race**

**1 RULES**

- 1.1 The regatta will be governed by The Racing Rules of Sailing (RRS).
- 1.2 The rules of participating classes and the rules of the First Coast Sailing Association for PHRF classes will apply.
- 1.3 Rules 35 and A4.1 are changed by Article 9 Time Limit.
- 1.4 Appendix V (One Turn Penalty) shall be in effect.

**2 ADVERTISING**

Advertising shall not be displayed.

**3 ELIGIBILITY AND ENTRY**

- 3.1 The regatta is open to all PHRF boats holding a PHRF rating certificates issued by the First Coast Sailing Association, and Portsmouth rated boats. PHRF classes will consist of Performance and Cruiser. Anticipated classes are Flying Scots and Hobie 18s.
- 3.2 Additional classes of three or more boats will be accommodated.
- 3.3 Eligible boats may enter by completing a registration form on-line on the event web site at <https://www.regattanetwork.com/event/29318>

**4 FEES**

- 4.1 The registration fee for the regatta is \$35.00.
- 4.2 There will be a \$10.00 late registration fee for all registrations after 11:59 pm Fri March 14.
- 4.3 Rudder Club member fee in accordance with Club By-Laws. The \$10.00 late fee applies to Rudder Club members.

**5 SCHEDULE**

- 5.1 March 15 2025 - All classes  
Three races are planned

Late registration: 9:30 – 10:00  
Competitors' meeting: 11:00  
Warning signal for first class: 11:55

**6 SAILING INSTRUCTIONS**

The sailing instructions will be available on or before 1 March 2025 and will be posted on the official bulletin board on the north wall of the Rudder Club, [www. SailJax.com](http://www.SailJax.com) ; on the Rudder Club web site at [www.rudderclub.com](http://www.rudderclub.com) and the official electronic bulletin board at <https://www.regattanetwork.com/event/29318>

**7 VENUE**

The racing area will be in the St. Johns River between the Buckman Bridge to the south and the Fuller Warren Bridge to the north as depicted on NOAA Chart 11492.

**8 THE COURSES**

Courses and course diagrams will be contained in the sailing instructions. The Race Committee may opt to use distance courses around river navigation marks for some or all PHRF classes.

**9 TIME LIMIT**

The time limit for the first boat in each one design, round-the-buoy class to finish is 90 minutes from her start. The time limit for the first boat in each Portsmouth and PHRF, round the-buoy, class to finish is 90 minutes corrected time from her start. One design boats failing to finish within 30 minutes time of the first boat in their class will be scored Did Not Finish. Portsmouth and PHRF boats failing to finish within 30 minutes corrected time of the first boat in their class will be scored Did Not Finish. This changes rules 35 and A4.1. The time limit for PHRF boats racing a distance river race around navigation buoys is 180 minutes.

## **10 SCORING**

- 10.1 One design classes will be scored in order of finish. PHRF Classes will be scored using PHRF time on distance. Open classes will be scored in accordance with the Portsmouth Yardstick System.
- 10.2 One race must be completed to constitute a series. A boat's series score will be the total of her race scores.

## **11. SUPPORT BOATS**

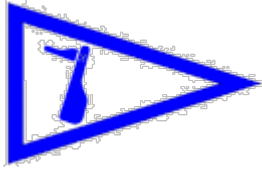
Support boats will display a red and yellow flag similar in design to code flag Uniform

## **12. PRIZES**

First, second, and third place prizes will be awarded in classes of more than five finishing boats. First and second place prizes will be awarded in classes of four to five finishing boats. A first-place prize will be awarded in classes of three or less finishing boats.

**13. FURTHER INFORMATION** For further information please contact the Rudder Club Race at 904-264-4094 or [raceoffice@rudderclub.com](mailto:raceoffice@rudderclub.com).

For directions to the Rudder Club and a list of local motels, please see our web site at [www.rudderclub.com](http://www.rudderclub.com) .



**THE RIVER CITY REGATTA**  
**March 15 2025**  
**The Rudder Club of Jacksonville**  
**8533 Malaga Avenue**  
**Jacksonville, FL 32244**

**SAILING INSTRUCTIONS**

**1 RULES**

- 1.1 The regatta will be governed by the rules as defined in the current Racing Rules of Sailing (RRS) and the PHRF Rules of First Coast Sailing Association (FCSA).
- 1.2 US SAILING Prescriptions will apply.
- 1.3 Rule A4 of the RRS is changed by SI 10.3
- 1.3 Rules 35 and A4.1 of the RRS are changed by SI- 13.
- 1.4 Appendix V (One Penalty Turn) will apply.

**2 NOTICES TO COMPETITORS**

Official notices to competitors will be posted on the notice board located on the north exterior wall of the Rudder Club and the official web site at <https://www.regattanetwork.com/event/29318>

**3 CHANGES IN THE SAILING INSTRUCTIONS**

Any change in the Sailing Instructions will be posted on the Official Bulletin Board on the Rudder Club north wall and on the Website listed in SI-2. Changes after 11:00, 15 March will be in the form of a Notice to Competitors except that any change to the schedule of races will be posted by 20:00 on the day before it will take effect. Oral changes may be made on the water and will be communicated to each boat prior to her warning signal.

**4 SIGNALS MADE ASHORE**

- 4.1 Signals made ashore will be displayed from the flag pole located on the north side of the Rudder Club.
- 4.2 Code Flag "AP", Answering Pennant, displayed ashore with two sound signals (one when

lowered) means "The race is postponed" The warning signal will be made not less than 60 minutes after "AP" is lowered.

**5 SCHEDULE OF RACES**

- 5.1 Three races are scheduled. Additional races may be scheduled for individual classes at that class's request.
- 5.2 Class divisions where differing from SI-6 will be posted on the Official Bulletin Board.
- 5.3 Schedule

**SATURDAY 15 March - One design, PHRF and Portsmouth classes - three races planned.**

Late registration: 9:30 –10:00

Competitors' meeting: 11:00 (Optional)

Warning signal for first class: 11:55

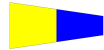


NOTE: The actual number of races may vary depending on weather and other circumstances.

- 5.4 Flag A displayed, with no sound, while boats are finishing means **"No more racing today."**

**6 CLASS FLAGS**

Class flags will be the International Numeral Pennants as depicted under Race Signals in the RRS. Assignment of spares will be posted as a Notice to Competitors on both the electronic and physical bulletin boards.

Portsmouth Multihull	P1	
PHRF Performance	P2	
PHRF Cruiser	P3	
Portsmouth Monohull	P4	

TBA	P5	
TBA	P6	
TBA	P8	

## 7 RACING AREA

The racing area will be in the St. Johns River between the Buckman Bridge to the south and the Fuller Warren Bridge to the north as depicted on NOAA Chart 11492.

## 8 THE COURSE

- 8.1 Around the buoy courses will be as depicted on addendum "A" showing the approximate angles between legs, the order of rounding, and the side on which each mark is to be left. The designation shall consist of two letters.
- 8.2 The course for a distance race will be displayed as numbers designating government navigation or First Coast Sailing Association marks as depicted in addendum B . An orange inflatable mark set to windward as a windward mark will be designated as "W."
- 8.3 The course for each class will be displayed on a white board located aft on non-course side of the committee boat.
- 8.4 If the Race Committee sets a gate instead of the Leeward Mark , boats shall sail between marks forming the gate from the direction of the last mark and round either the port mark leaving it to port or the starboard mark leaving it to starboard.
- 8.5 If the Race Committee sets an offset mark in the vicinity of the windward mark, boats shall sail around both marks leaving them on the prescribed side.

## 9 MARKS

Marks 1, 2S, and 2P will be yellow cylinders. Mark 1L will be an orange cylinder. Mark 1L offset, if set, will be a red ball. A new mark laid in accordance with Change of Course procedures will be an orange cylinder. The start mark will be an orange flag on a floating pin and

the finish mark will be a blue flag on a floating pin.

## 10 START

- 10.1 The Starting Line will be a line between an orange flag flown on the Race Committee Signal Boat and a mark set toward the left side of the course from the Committee Boat relative to the first leg of the course.
- 10.2 Boats whose warning signal has not been made shall avoid the starting area.
- 10.3 A boat crossing the start line, as if to start, later than 5 minutes after her starting signal will be scored "Did Not Start." This changes RRS A4.

## 11. CHANGE OF COURSE AFTER THE START

To change the position of the next mark, the race committee will move the original mark (or the finishing line) to a new position. The change will be signaled before the leading boat has begun the leg, although the mark may not yet be in the new position. Any mark to be rounded after rounding the moved mark may be relocated without further signaling to maintain the course configuration.

## 12 THE FINISH

The Finish Line will be between a blue flag flown on the Race Committee Signal Boat and a mark set toward the left side of the course from the Committee Boat relative to the final leg of the course (opposite side of the committee boat from the starting line). This is to accommodate conducting starts for some classes while others are finishing.

## 13 TIME LIMIT

The time limit for the first boat in each one design, round-the-buoy class to finish is 90 minutes from her start. The time limit for the first boat in each Portsmouth and PHRF, round-the-buoy, class to finish is 90 minutes. One design boats failing to finish within 30 minutes time of the first boat in their class will be scored Did Not Finish. Portsmouth and PHRF boats failing to finish within 30 minutes corrected time of the first boat in their class will be scored Did Not Finish. This changes rules 35 and A4.1.

The time limit for PHRF boats racing a distance river race around navigation buoys is 180 minutes.

#### **14 PROTESTS AND REQUESTS FOR REDRESS**

- 14.1 Protests shall be written on forms available at the Rudder Club or the US SAILING Web Site. They shall be filed with the Protest Committee. Protest time will end 90 minutes after the last boat has finished the last race of the day. Protests will be heard in the approximate order received.
- 14.2 Protest notices will be posted on the electronic and physical Official Bulletin Boards within 30 minutes following the protest time limit.
- 14.3 Appendix T of the RRS, Arbitration, is in effect.

#### **15 SAFETY**

- 15.1 Before the first race, boats shall attempt to check in with the Race Committee by sailing past the committee boat on the non-course side prior to their class Warning Signal.
- 15.2 Boats withdrawing from a race prior to finishing a race or retiring before racing has ended for the day shall make every effort to ensure that Race Committee is notified that they have dropped out
- 15.3 All competitors are required to conform to the U.S. Coast Guard regulations and the RRS concerning personal floatation devices and other required equipment.
- 15.4 Boats shall not impede the passage of a vessel which can safely navigate only within a narrow channel, and give way to commercial fishing vessels while fishing or vessels with restricted ability to maneuver.
- 15.5 In accordance with RRS 42.3(i), providing no significant advantage is gained, a boat may employ propulsion using an engine or other method to remain clear of or not impede the passage of a vessel restricted in its ability to maneuver when required by the Inland Rules.

#### **16 SCORING**

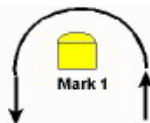
The Low Point Scoring System of appendix A will apply. PHRF classes will be scored PHRF time on distance. Open classes will be scored in accordance with the Portsmouth Yardstick (HC)

System. One race must be completed to constitute a series. A boat's series score will be the total of her race scores. If 6 races are completed a boat's worst score will be discarded.

#### **17 PRIZES**

First, second, and third place prizes will be awarded in classes of more than five finishing yachts. First and second place prizes will be awarded in classes of four to five finishing yachts. A 1st place prize will be awarded in classes of three or less finishing yachts. Prizes will be awarded on Saturday 15 March.

## Round –the-Buoy Courses (Attachment A)

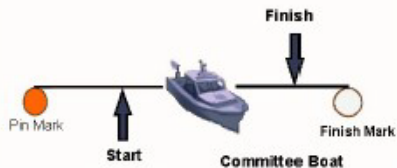
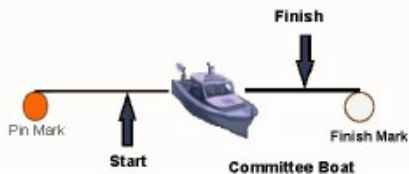
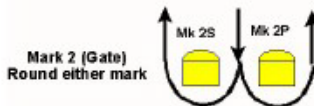
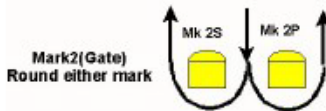


Not to Scale



Mark 1  
Not a mark of the course

Not to Scale



Windward Leeward Short

WS

Course Start, 1, 2P or 2S, 1, Finish

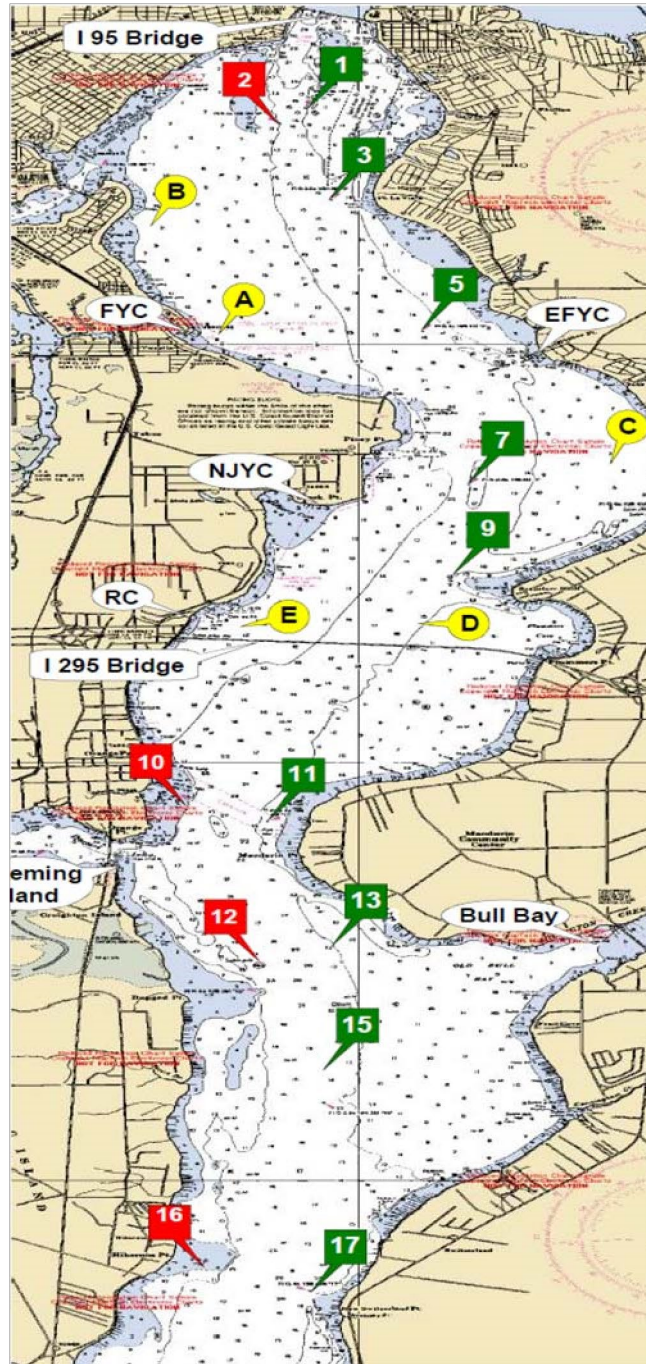
Windward Leeward Long

WL

Course Start, 1L, 2P or 2S, 1L, Finish

## First Coast Sailing Association Race Marks

Distance	nm
1 to 3	1.039
1 to 5	2.787
1 to 7	4.643
1 to A	2.793
1 to B	1.570
3 to 5	1.773
3 to 7	3.615
3 to 9	4.638
3 to A	1.829
3 to B	1.126
3 to C	3.763
5 to 7	1.863
5 to 9	2.926
5 to A	1.468
5 to B	2.299
5 to C	2.029
5 to D	3.486
7 to 9	1.095
7 to C	0.977
7 to D	1.697
7 to E	2.240
9 to C	1.726
9 to D	0.618
9 to E	1.486
A to B	1.523
A to C	3.140
B to C	4.303
C to D	2.328
C to E	3.111
D to E	1.127
11 to 13	2.317
11 to 15	3.400
11 to 17	5.631
11 to 17A	6.836
13 to 15	1.109
13 to 17	3.360
13 to 17A	4.575
13 to 18	5.585
15 to 17	2.252
15 to 17A	3.467
15 to 18	4.476
17 to 17A	1.216
17 to 18	2.225
17A to 18	1.010
18 to 20	2.038



- Green 1**  
N 30° 17.813  
W 81° 40.411
- Red 2**  
N 30° 17.628  
W 81° 40.635
- Green 3**  
N 30° 16.780  
W 81° 40.259
- Green 5**  
N 30° 15.142  
W 81° 39.466
- Green 7**  
N 30° 13.305  
W 81° 39.077
- Green 9**  
N 30° 12.216  
W 81° 39.237
- Red 10**  
N 30° 09.513  
W 81° 41.399
- Green 11**  
N 30° 09.305  
W 81° 40.794
- Red 12**  
N 30° 07.240  
W 81° 40.800
- Green 13**  
N 30° 07.036  
W 81° 40.224
- Green 15**  
N 30° 05.926  
W 81° 40.263
- Red 16**  
N 30° 04.038  
W 81° 41.254
- Green 17**  
N 30° 03.671  
W 81° 40.393
- Green 17A**  
N 30° 02.457  
W 81° 40.522
- Red 18**  
N 30° 01.445  
W 81° 40.551
- Green 19**  
N 30° 01.335  
W 81° 40.279
- Red 20**  
N 29° 59.822  
W 81° 39.126

<p><b>**Note:</b> If set these marks will be an inflatable mark.</p> <p><b>Race Mark "A"</b> N 30° 15.090 W 81° 41.160</p> <p><b>Race Mark "B"</b> N 30° 11.648 W 81° 39.522</p> <p><b>Race Mark "C"</b> N 30° 13.564 W 81° 37.989</p>	<p><b>Race Mark "D"</b> N 30° 16.581 W 81° 41.539</p> <p><b>Race Mark "E"</b> N30° 11.648 W 81° 40.822</p> <p>Race Mark "7T" N N30° 13.305 W 81° 39.077</p>
--	---