



St. Augustine Yacht Club

2025 PHRF Frostbite Series

Notice of Race

1. Eligibility and Entry

- 1.1. Performance and Cruising: As defined in FCSA PHRF Rules and FCSA Bylaws
- 1.2. At the discretion of the Race Committee, provisional ratings may be given, while ratings are processed by FCSA. FCSA membership and valid rating are required to be eligible for prizes.

2. Fees

- 2.1. Entry Fee will be \$50.00 exclusive of tax for the (4 races) series, payment must be received prior to racing. SAYC Members may charge their house account.

3. Schedule

- 3.1. There will be a skippers meeting at SAYC at 9:45 AM for the first race of the series only on February 1, 2025
- 3.2. The first warning signal will be at 11:55 each Day. Once Race per day
Saturday Afternoons: February 1 February 15 March 1 March 15

4. Sailing Instructions & Classes

- 4.1. SIs are available on [Frostbite Series Event Page](#).

5. Venue & Courses

- 5.1. Racing will be on the Tolomato River, north of the Vilano Bridge, Saint Augustine, FL.

6. Prizes

- 6.1. Daily results will be announced, and trophies presented following racing at the SAYC.

7. Disclaimer of Liability

- 7.1. Competitors participate in the regatta entirely at their own risk. See RRS 4, Decision to Race. The organizing authority will not accept any liability for material damage or personal injury, or death sustained in conjunction with or prior to, during, or after the regatta.

8. Insurance

- 8.1. Each participating boat shall be insured with valid third-party liability insurance with a minimum coverage of \$250,000 per incident or the equivalent.

9. Further Information

- 9.1. For further information please contact Brigitte Wagner, RCOS, 973-452-9417, rcos@sayc.club



St. Augustine Yacht Club

2025 Phrf Frostbite Series

Sailing Instructions

1 RULES

- 1.1 The regatta will be governed by the rules as defined in *The Racing Rules of Sailing*, FCSA PHRF Rules and FCSA Bylaws.
- 1.2 If there is a conflict between these instructions and Notice of Race, these instructions shall take precedence.
- 1.3 If there is a conflict between languages the English text will take precedence.

2 Notices to Competitors

- 2.1 Notice to competitors will be posted on the official [Frostbite Series Event Website](#).

3 Changes to Sailing Instructions

- 3.1 Any changes to the sailing instructions will be posted before 0900 on the day it will take effect, except that any change to the schedule of races will be posted by 2000 on the day before it will take effect.

4 Signals made Ashore

- 4.1 No signals will be made ashore.
- 4.2 If any race is to be cancelled
 - 4.2.1 It will be so indicated on the event website.
 - 4.2.2 It will be announced as cancelled via email to participants.

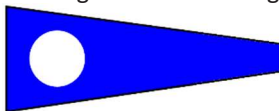
5 Schedule of Races

- 5.1 There will be a skippers meeting at SAYC at 9:45M for the first race of the series only on February 1, 2025.
- 5.2 Schedule 2025: Saturdays - First Warning 11:55 for all classes
February 1 February 15 March 1 March 15
- 5.3 To alert boats that a race or sequence of races will begin soon, the orange starting line flag will be displayed with one sound at least five minutes before a warning signal is made.
If there are sufficient entries, the Race Committee may split the Performance and Cruising class starts. Race Committee will announce on VHF Channel 72. Performance boats shall start first. The Cruising class warning will be 5:00 minutes after the Performance class start, thus Cruising class will start 10:00 minutes after the Performance class start. The Race Committee may issue separate postponement for Cruising class; refer to RRS 27.2.

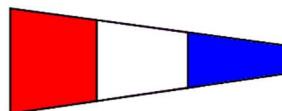
6 Classes and Class Flags

- 6.1 Classes will be Performance and Cruising as defined in FCSA Bylaws. Declaration of Spinnaker/Non-Spinnaker must be made for the entire series. All boats racing must have a valid FCSA PHRF handicap rating.
- 6.2 Class Flags will be:

Cruising Fleet – Code Flag 2



Performance Fleet – Code Flag 3



7 Racing Areas

- 7.1 Courses will be setup in accordance with SI Appendix A
- 7.2 Race committee will indicate direction and laps via VHF Channel 72, no later than 5 minutes prior to warning signal.

8 Marks

- 8.1 Marks are described in SI Appendix A

9 The Start

- 9.1 The Start marks are described in SI Appendix A
- 9.2 Races will be started by using RRS 26 with the warning signal made 5 minutes before the starting signal
- 9.3 Boats whose warning signal has not been made shall avoid the starting area during the starting sequence for other races
- 9.4 A boat that does not start within 15 minutes after her starting signal will be scored Did Not Start without a hearing. This changes RRS A4 and A5.
- 9.5 The '1' flag rule may be in effect.

10 The Finish

- 10.1 The Finish marks are described in SI Appendix A
- 10.2 If the race committee is absent when a boat finishes, she should report her finishing time, and her position in relation to nearby boats, to the race committee at the first reasonable opportunity.

11 Penalty System

11.1 For all classes RRS 44.1 is changed so that the Two-Turns Penalty is replaced by the One-Turn Penalty.

12 Time Limits

12.1 For all classes the time limit will be 2.5 hours. ***If any boat within her class finishes in the 2.5-hour time limit the race will be scored. If any subsequent boats in her class have not finished within 30 minutes of the 2.5-hour limit (cumulative 3 hours), she shall be scored as DNF.***

12.2 If no boat has passed the first mark of the course within 45 minutes from the start, the race will be abandoned. Failure to meet this time will not be grounds for redress. This changes RRS 62.1(a).

13 Protests and Requests for Redress

13.1 Protest forms are available at the Saint Augustine Yacht Club. Protests and requests for redress or reopening shall be delivered there within the appropriate time limit.

13.2 For each class, the protest time limit is 90 minutes after the last boat has finished the last race of the day or the race committee signals no more racing today, whichever is later.

13.3 Notices will be posted no later than 30 minutes after the protest time limit to inform competitors of hearings in which they are parties or named as witnesses. Hearings will be held at the Saint Augustine Yacht Club as soon as practical thereafter.

14 Scoring

14.1 Low Point Scoring will be used.

14.2 Boats in the starting area will be counted at the discretion of the race committee.

14.3 Corrected times will be calculated using [PHRF Time on Time](#).

14.4 Two races are required to be completed to constitute a series.

14.5 If five or more races are run, each boat will get a throw out.

15 Safety Regulations

15.1 A boat that retires from a race shall notify the race committee as soon as possible.

15.2 All boats must check-in with the Race Committee, via VHF Channel 72, or by sailing within hailing distance of the committee boat, no later than 5 minutes before the warning of the first start.

15.3 See RRS 27.1 and 40.

16 Radio Communication

16.1 Except in an emergency, or to comply with above instructions, a boat that is racing shall not make voice or data transmissions and shall not receive voice or data communication that is not available to all boats.

16.2 Race Committee will use VHF Channel 72 for course announcements and registration.

17 Prizes

17.1 Daily results with prizes will be announced following racing at the SAYC.

17.2 Series prizes will be presented at the SAYC Awards Banquet in November.

18 Disclaimer of Liability

18.1 Competitors participate in the regatta entirely at their own risk. See RRS 4, Decision to Race. The organizing authority will not accept any liability for material damage or personal injury or death sustained in conjunction with or prior to, during, or after the regatta.

18.2 A signed current [Race Waiver Form](#) is required to be on file with SAYC.

19 Insurance

19.1 Each participating boat shall be insured with valid third-party liability insurance with a minimum coverage of \$250,000 per incident or the equivalent.

20 Further Information

20.1 For further information please contact Brigitte Wagner, Rear Commodore of Sail Brigitte Wagner 973-452-9417, rcos@sayc.club

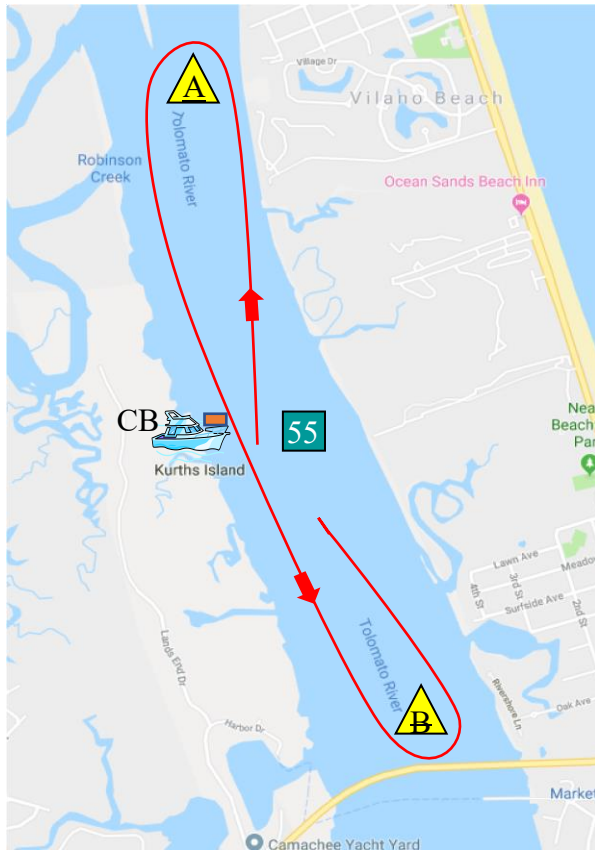


St. Augustine Yacht Club

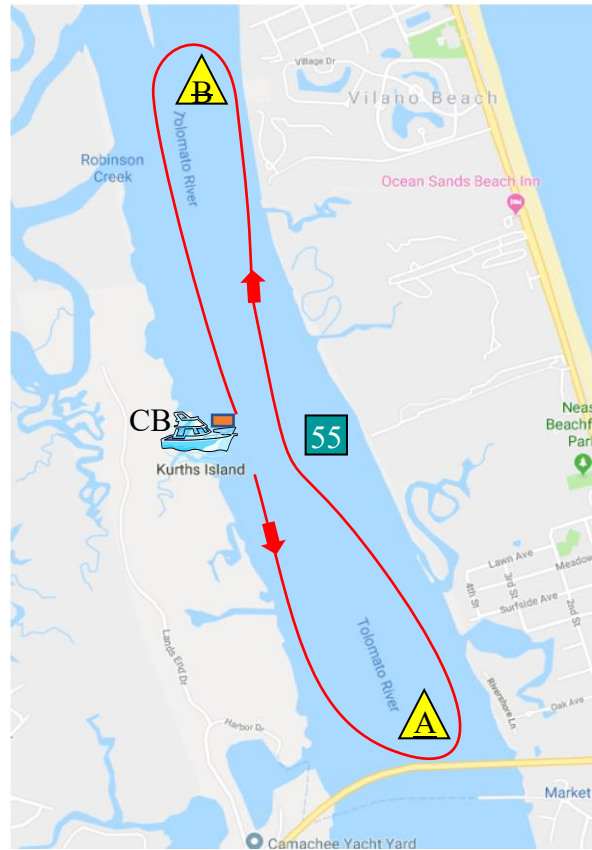
Standard ICW Racecourses

Sailing Instructions – Appendix A

Course – Northerly Start



Course – Southerly Start



Unless otherwise specified in NORs or Sailing Instructions, Inshore Saint Augustine Yacht Club events will use the following course diagrams.

1. The start/finish line will be between the Orange Flag on the Committee Boat (CB) and Government Mark 55.
2. Boats will start heading either north or south.
3. The race committee will identify Mark A and Mark B prior to starting. They may be government marks or other suitable temporary marks.
4. The race committee will specify the number of laps to be sailed.
5. Boats may not pass west of the Committee Boat, or east of Mark 55 while racing. In other words, the start/finish line must be crossed each time it is passed. Therefore, the committee boat and Mark 55 are marks of the course, as such RRS 18 applies. They should not be considered obstructions.
6. All other marks shall be rounded to port.
7. Race committee may shorten course for one or more classes according to RRS 32.2 and may finish boats between CB and Mark 55.

As an example, the race committee might make the following radio announcement: "Today's race shall be Course - South, once around. Mark A is Government Mark 57. Mark B is a yellow tetrahedron approximately 0.75 miles north of Mark 55.". This should be interpreted and sailed as follows: (i) Start between CB and Mark 55 heading south (ii) round government mark 57 (Mark A) to port (iii) head north, leaving Mark 55 to starboard and CB to port (iv) round the yellow tetrahedrone (Mark B) to port (v) head south, finish with CB to starboard and Mark 55 to port.