



St. Augustine Sailing Sisters

SASS – SAYC Bikini Race-
August 3, 2024–Notice of Race–PHRF



The Saint Augustine Sailing Sisters (SASS) in conjunction with the SAYC are proud to present a Women's race featuring all female helmspersons and encouraging all female crews or majority female crews.

1 RULES

1.1 The regatta will be governed by the rules as defined in *The Racing Rules of Sailing*, and FCSA Bylaws.

2 Eligibly and Entry

2.1 All sailboats with a valid FCSA PHRF certificate.

2.2 At the discretion of the Race Committee, provisional rating may be assigned.

2.3 Entry must be done [here](#).

3 Fees

3.1 Entry Fee will be \$45.00 inclusive of tax for the regatta, payment must be received prior to racing. SAYC Members may charge their house account.

4 Schedule

1000 Skippers Meeting at St. Augustine Yacht Club

1255 Mixed Crew Warning Signal (Start 1300)

1300 All Female Crew Warning Signal (Start 1305)

5 Sailing Instructions & Classes

5.1 One race is scheduled for August 3, 2024

5.2 Classes will be all women and mixed crew (at least 50% women). A woman must be on the helm at all times.

5.3 Spinnakers must be declared prior to the end of the Skipper's Meeting.

5.4 Sailing Instructions are available on [event page](#).

6 Venue & Courses

6.1 North of the Vilano Bridge in the Tolomato River, Saint Augustine.

7 Penalty System

7.1 Decisions of the protest committee will be final as provided in RRS 70.5.

7.2 RRS 44.1 is changed so that the Two-Turns Penalty is replaced by the One-Turn Penalty.

8 Scoring

8.1 The scoring system is as follows: Low Point Scoring as defined in RRS Appendix A.

8.2 Corrected times will be calculated using PHRF Time on Time. A five (-5) second per mile adjustment be made for each male on-board in mixed crew.

9 Radio Communication

9.1 Except in an emergency, a boat that is racing shall not make voice or data transmissions and shall not receive voice or data communication that is not available to all boats.

9.2 Race Committee will use VHF Channel 72 for course announcements and registration.

10 Prizes

10.1 Prizes will be awarded to both classes (All Female and Mixed Crew) at the SASS Bikini Race party, starting at 1700 at SAYC.

11 Liability

11.1 Competitors participate in the regatta entirely at their own risk. See RRS 4, Decision to Race. The organizing authority will not accept any liability for material damage or personal injury or death sustained in conjunction with or prior to, during, or after the regatta.

12 SAYC Associate Membership

12.1 A portion of the non-member skipper's registration fee will pay for and grant a SAYC Associate Membership of the skipper for the duration of events hosted at the SAYC, that are directly related to this race, regatta or series. By registering for this event and attending any related event hosted at the SAYC clubhouse, skippers (non-member or otherwise) acknowledge that they are responsible for the conduct of their guests (the SAYC Code of Conduct may be found on the notice board inside the clubhouse) and any debt that their guests may incur.

13 Insurance

13.1 Each participating boat shall be insured with valid third-party liability insurance with a minimum coverage of \$250,000 per incident or the equivalent.

14 Further Information

14.1 For further information please contact Rear Commodore of Sail, Tim Tucker, rcos@sayc.club, 352-219-6060.



St. Augustine Sailing Sisters SASS – SAYC Bikini Race-Sailing Instructions

August 3, 2024-- --PHRF

1 RULES

- 1.1 The regatta will be governed by the rules as defined in *The Racing Rules of Sailing*.
 - 1.1.1 FCSA PHRF Rules and FCSA Bylaws apply to PHRF boats.
 - 1.1.2 One Design Class Rules apply to Sport Boats.
- 1.2 If there is a conflict between these instructions and Notice of Race, these instructions shall take precedence.
- 1.3 If there is a conflict between languages the English text will take precedence.

2 Notices to Competitors

- 2.1 Notice to competitors will be posted on the official event website:

3 Changes to Sailing Instructions

- 3.1 Any change to the sailing instructions will be announced prior to the end of the skipper's meeting.

4 Signals made Ashore

- 4.1 No signals will be made ashore.
- 4.2 If the race is to be cancelled or postponed. It will be indicated per SI 2.1
 - 4.2.1 It will be announced as cancelled or postponed via email to participants

5 Schedule of Races

- 5.1 Date of race – August 3, 2024

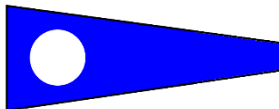
| | |
|------|--|
| 1000 | Skippers Meeting SAYC Clubhouse (registrations closed at end of meeting) |
| 1255 | Mixed Crew and Sport Boat Warning Signal (Start 1300) |
| 1300 | All Female Crew Warning Signal (Start 1305) |
- 5.2 Schedule subject to RRS 27.3.

6 Classes and Class Flags

- 6.1 PHRF Classes will be Mixed Crew and All Female.
- 6.3 Class Flags will be:

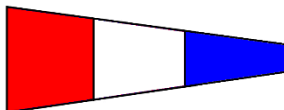
Mixed Crew

Code Flag 2



All Female

Code Flag 3



7 Racing Areas

- 7.1 North of the Vilano Bridge in the Tolomato River, Saint Augustine, FL.
- 7.2 Courses will be setup in accordance to SI Appendix A
- 7.3 Race committee will indicate course via VHF Channel 72, no later than 5 minutes prior to warning signal.

8 Marks

- 8.1 Marks are described in SI Appendix A

9 The Start

- 9.1 The Start and finish line will be stated at the skippers' meeting or no later than 1245 on race date.
- 9.2 Races will be started by using RRS 26 with the warning signal made 5 minutes before the starting signal.
- 9.3 Boats whose warning signal has not been made shall avoid the starting area during the starting sequence for other races.

- 9.4 A boat that does not start within 30 minutes after her starting signal will be scored Did Not Start without a hearing. This changes RRS A4 and A5.
- 9.5. At the discretion of the Race Committee, the two classes starts may be combined.

10 The Finish

- 10.1 The Finish marks are described in SI Appendix A.
- 10.2 If the race committee is absent when a boat finishes, she should report her finishing time, and her position in relation to nearby boats, to the race committee at the first reasonable opportunity.

11 Penalty System

- 11.1 For all classes RRS 44.1 is changed so that the Two-Turns Penalty is replaced by the One-Turn Penalty.

12 Time Limits

- 12.1 For all classes the time limit will be 3 hours.
- 12.2 If no boat has passed mark A within 60 minutes the race will be abandoned. Failure to meet this time will not be grounds for redress. This changes RRS 62.1(a).

13 Protests and Requests for Redress

- 13.1 Protest forms are available at the Saint Augustine Yacht Club. Protests and requests for redress or reopening shall be delivered there within the appropriate time limit.
- 13.2 For each class, the protest time limit is 90 minutes after the last boat has finished the last race of the day or the race committee signals no more racing today, whichever is later.
- 13.3 Notices will be posted no later than 30 minutes after the protest time limit to inform competitors of hearings in which they are parties or named as witnesses. Hearings will be held at the Saint Augustine Yacht Club as soon as practical thereafter.

14 Scoring

- 14.1 Low Point Scoring will be used as defined in RRS Appendix A.
- 14.2 PHRF corrected times will be calculated using Time on Time. A minus five (-5) second per mile adjustment to a boat's FCSA rating will be made for each male on-board in mixed crew.
- 14.3 Each skipper must notify the Race Committee at check-in how many male crew members are on board

15 Safety Regulations

- 15.1 A boat that retires from a race shall notify the race committee as soon as possible.
- 15.2 All boats must check-in with the Race Committee, via VHF Channel 72, or by sailing within hailing distance of the committee boat, no later than 5 minutes before her warning.
- 15.3 See RRS 27.1 and 40.

16 Radio Communication

- 16.1 Except in an emergency, or to comply with above instructions, a boat that is racing shall not make voice or data transmissions and shall not receive voice or data communication that is not available to all boats.
- 16.2 Race Committee will use VHF Channel 72 for course announcements and registration.

17 Prizes

- 17.1 Prizes will be awarded to both classes (All Female and Mixed Crew) at SAYC following the race.

18 Disclaimer of Liability

- 18.1 Competitors participate in the regatta entirely at their own risk. See RRS 4, Decision to Race. The organizing authorities will not accept any liability for material damage or personal injury or death sustained in conjunction with or prior to, during, or after the regatta.

19 Insurance

- 19.1 Each participating boat shall be insured with valid third-party liability insurance with a minimum coverage of \$250,000 per incident or the equivalent.

20 Further Information

- 20.1 For further information please contact: Tim Tucker, rcos@sayc.club, 352-219-6060

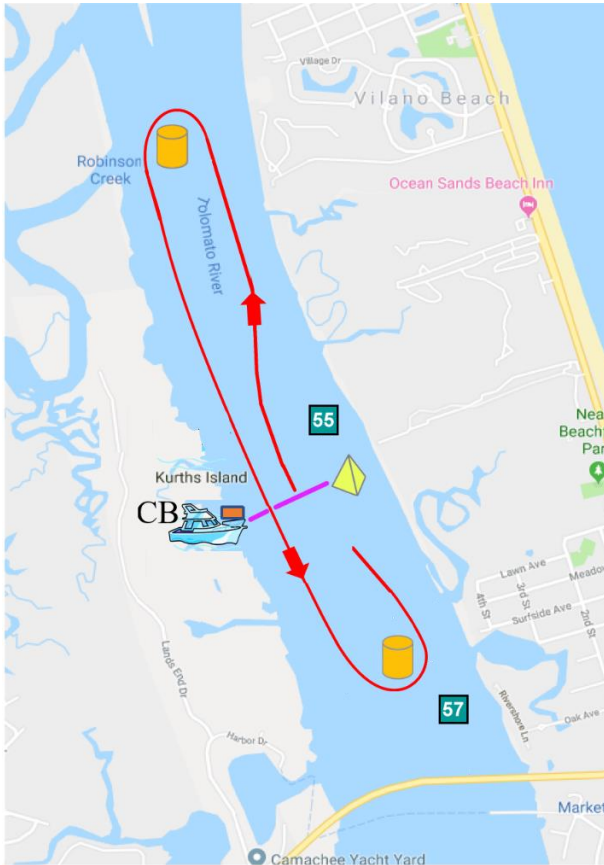


St. Augustine Yacht Club

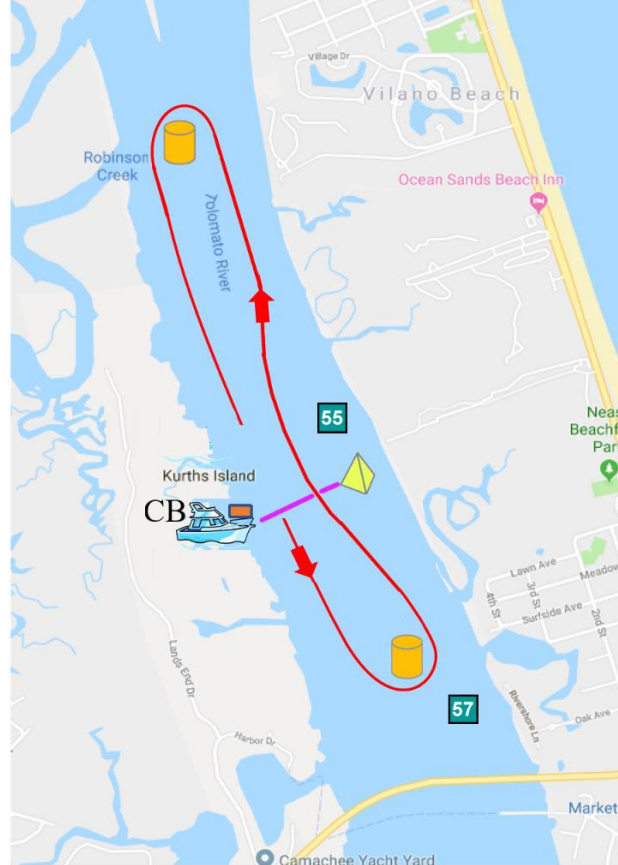
Standard ICW Racecourses

Sailing Instructions – Appendix A – V2

Course – Northerly Start



Course – Southerly Start



Unless otherwise specified in NORs or Sailing Instructions, Inshore Saint Augustine Yacht Club events will use the following course diagrams.

1. The start/finish line will be between the Orange Flag on the Committee Boat (CB) and a yellow tetrahedron - Mark C.
2. Boats will start heading either north or south.
3. Marks A and Mark B will be orange cylinders.
4. The race committee will specify the direction of start and the number of laps to be sailed.
5. Boats may not pass west of the Committee Boat CB, or east of the yellow Mark C while racing. In other words, the start/finish line must be crossed each time it is passed. Therefore, the committee boat and Mark C are marks of the course, as such RRS 18 applies. They should not be considered obstructions.
6. Marks A and B shall be rounded to port.
7. The race committee may shorten course for one or more classes according to RRS 32.2.
8. Marks A, B, and C may be substituted for any suitable mark or a government mark.

As an example, the race committee might make the following radio announcement: "Today's race will be south start with one lap". This should be interpreted and sailed as follows: (i) Start between the CB and yellow Mark C heading south (ii) round orange Mark A to port (iii) head south, leaving yellow Mark C to starboard and CB to port (iv) round the orange Mark B to port (v) head north, finish with CB to starboard and yellow Mark C to port.