

LABOR DAY REGATTA

5-6 September One Design/Portsmouth

12 September 2020 PHRF

The Rudder Club of Jacksonville

8533 Malaga Avenue

Jacksonville, FL 32244, USA

Notice of Race

1 RULES

- 1.1 The regatta will be governed by the rules as defined in *The Racing Rules of Sailing* (RRS), the scoring rules of Portsmouth North America and the PHRF rules of the First Coast Sailing Association.

2 ADVERTISING

Advertising shall not be displayed.

3 ELIGIBILITY AND ENTRY

- 3.1 Eligible yachts are those who have officially entered by completing a registration form on-line or on-line during the late registration period as set forth in this Notice of Race.
- 3.2 One design boats and Portsmouth boats may register on line through 5 September on the event web site at <http://www.regattanetwork.com/event/20214>.
- 3.3 PHRF entrants may register through 12 September on the US SAILING Regatta Network on the event web site at <http://www.regattanetwork.com/event/20216>.
- 3.4 Boats not registering on line may register during the Late Registration periods shown in NOR Article 5, Schedule of Events.
- 3.5 For the OneDesign/Portsmouth races on 5 - 6 Sept, it is anticipated that boats will be divided into the following racing classes: Flying Scot, Hobie 16, Hobie 18, Thistle, Laser, Pico, Portsmouth mono-hull, and Portsmouth multi-hull. Additional classes may be accommodated provided the minimum requirement of Rule 3.6 is met. Classes for the PHRF race on 12 September will be PHRF Spinnaker, PHRF Non-spinnaker and PHRF Cruiser. Non-PHRF rated cruising and sport boats are welcome to participate in the Portsmouth races on Saturday and Sunday. Registration in accordance with 3.2.
- 3.6 A minimum of three registered boats is necessary to constitute a class.
- 3.7 PHRF class boats are required to have a current PHRF rating certificate issued by the First Coast Sailing Association.

4 FEES

- 4.1 Registration Fee: On line registration for all classes \$30.00 (Rudder Club members in accordance with Rudder Club provisions. Place charge on Rudder Club Bill.).

- 4.3 Boats intending to race both Portsmouth on 5 - 6 Sept as well as the race for PHRF rated boats on Sunday 12 Sept need pay only one registration fee of \$30. When registering for the One Design/Portsmouth Regatta, indicate on the registration form your intent to race the PHRF Regatta; then for those who have already registered for the Saturday and Sunday events, register for the PHRF Regatta on line and select your special registration type at the top of the registration page.

- 4.4 Boats intending to race only with the Portsmouth Class should register on line in accordance with NOR article 3.2.

5 SCHEDULE OF EVENTS

- 5.1 **SATURDAY 5 September 2020** - One design, and Portsmouth classes. Three races are anticipated.
- 1000 – 1130: Late registration
1140: Competitor's meeting
1255: Warning signal for first class
1730: Party . One entrant per registration. \$5.00 for additional entrants. (Rudder Club members in accordance with Rudder Club provisions)
Everybody is invited.
- 5.2 **SUNDAY 5 September 2020** – One design and Portsmouth class racing continues. Two races are anticipated. Warning Signal for first class 0955
- 5.3 **SUNDAY 12 September 2020 - PHRF Classes:**
1200 – 1330: PHRF Late Registration
1340 - Competitors' Meeting (Optional for those registering on line and holding a copy of the Sailing Instructions.)
1455: Warning signal for first class.

6 SAILING INSTRUCTIONS

This notice, the sailing instructions and changes thereto will be available on the event web sites listed in NOR articles 3.2 and 3.3; on Sailjax.com, and posted on the official bulletin board on the north exterior wall of the Rudder Club. Changes to this notice or the Sailing Instructions will be distributed by e-mail to those on-line entrants registered with an e-mail address; posted on the official bulletin board on the North Wall of the

Rudder Club and posted on the official notice boards on respective web sites.

Changes will be posted prior to 1000 on the morning of each race. Subsequent changes will be made in the form of a Notice to Competitors. Schedule changes will be posted prior to 1900 (7:00 PM) on the day prior to the race. Oral changes may be given on the water in accordance with RRS 90.2(c).

7 VENUE

The regatta site will be at the Rudder Club of Jacksonville Inc. Parking within the fence at the Rudder Club is reserved for Rudder Club members only. Guests of members and visiting sailors are requested to park in the parking area outside the fence.

8 RACING AREA

The racing area will be in the St. Johns River as depicted on NOAA Chart 11492 between the Buckman Bridge to the south and the Fuller Warren Bridge to the north.

9 COURSES

Courses will be as shown in an addendum to the Sailing Instructions and on the Official Bulletin Board. Courses will be displayed from a board displayed on the Race Committee Boat.

10 SCORING

For the One Design, Portsmouth races a boat's series score will be the total of her race scores. When six or more races have been completed, a boat's series score will be the total of her race scores excluding her worst score. One race is

necessary to constitute a series.

11 PRIZES

First, second, and third place prizes will be awarded in classes of more than five finishing yachts. First and second place prizes will be awarded in classes of four to five finishing yachts. first place prize will be awarded in classes of three or less finishing yachts. One design trophies will be awarded following racing on Sunday 6 September 2020. Cruiser trophies will be awarded following racing on Saturday 12 September 2020.

12 DISCLAIMER OF LIABILITY

Serious accidents occasionally occur during yacht racing events and participants in yacht racing may sustain mortal or serious injuries and/or property damage as a consequence thereof. By registering, the person in charge (skipper) knowingly assumes the risks of yacht racing. The decision for a boat to participate in a race or continue racing is that of the person in charge's alone. It is the responsibility of the person in charge to obtain a signed release from each member of his or her crew before the race begins. By entering the race the person in charge agrees to abide by the rules, regulations and sailing instructions of the Labor Day Regatta, the ISAF and the United States Sailing Association. Minors must present a copy of the registration form signed by a parent or guardian before being allowed to participate as a person in charge.

13 FURTHER INFORMATION

For further information, please contact:
The Race Office at raceoffice@rudderclub.com

Quick Response Codes - Read the following on your Barcode Reader App for On-line registration or latest Regatta Information .

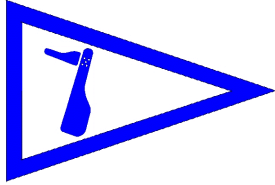
One design/Portsmouth



Phrf



<http://www.regattanetwork.com/event/20214> <http://www.regattanetwork.com/event/20216>



THE LABOR DAY REGATTA

September 12 2020

The Rudder Club of Jacksonville

8533 Malaga Avenue

Jacksonville, FL 32244, USA

PHRF RACE SAILING INSTRUCTIONS

1 RULES

- 1.1 The race will be governed by the rules as defined in the current Racing Rules of Sailing (RRS), and the rules of the First Coast Sailing Association.
- 1.2 Racing Rules A4 and A5 are changed by SI 10.4 as follows: "A boat starting later than five minutes after her starting signal will be scored "Did Not Start" without hearing."
- 1.3 Racing rules 35, A4, and A5 of the RRS are changed by SI 13.1 as follows: "A boat failing to finish within 30 minutes corrected time after the first boat in her class will be scored 'Did not Finish' without a hearing".

2 NOTICES TO COMPETITORS

Official notices to competitors will be posted on the official notice board located on the north exterior wall of the Rudder Club. Notices may also be published on the Event Web Site at:

www.regattanetwork.com/event/20216

3 CHANGES IN THE SAILING INSTRUCTIONS

- 3.1 Changes to the Sailing Instructions will be posted on the official bulletin board on the north exterior wall of the Rudder Club prior to 1200 on the day of the race and on the event web site. Time permitting they will also be distributed by e-mail to those on-line entrants with an e-mail address provided on the registration form on Regatta Network.
- 3.2 Oral changes to the Sailing Instructions may be communicated to each boat while on the water and prior to her warning signal.

4 SIGNALS MADE ASHORE

- 4.1 Signals made ashore will be displayed from the flag pole located on the north side of the Rudder Club.
- 4.2 When AP is displayed ashore "1 minute" is replaced with "not less than 45 minutes" in the race signal AP.
- 4.3 Signals made ashore will also be relayed on Marine VHF Channel 78(US)

5 SCHEDULE OF RACES

- 5.1 Depending on wind conditions one race using FCSA and river navigation marks or three, windward/leeward, round-the-buoy races may be conducted.
- 5.2 Schedule:
Sunday 12 September 2020 - PHRF Race,
1200 – 1330 - PHRF Late Registration
1400 - Competitors' Meeting (Optional for those registering on line and possessing a copy of the Sailing Instructions).
1455 - Warning signal for first class.

6 CLASS FLAGS

Class flags will be the International Numeral Pennants as depicted in the RRS

Class	Flag	
Spinnaker	P1	
Non-Spinnaker	P2	
Cruiser	P3	

7 RACING AREA

The racing area will be in the St. Johns River between the Buckman Bridge to the south

and the Fuller Warren Bridge to the north as depicted on NOAA Chart 11492.

8 THE COURSE

- 8.1 Race course for PHRF Classes will be displayed from a course board on the committee boat.
- 8.2 Round the mark races will be designated as shown in Attachment A.
- 8.3 A single race using river navigation and FCSA marks will be displayed using the numerical designation of the Race Marks as depicted in Attachment B.
- 8.2 If the Race Committee sets an offset mark in the vicinity of the windward mark, boats shall sail around both marks leaving them on the prescribed side.
- 8.3 If a leeward gate is not set, boats shall round the single leeward mark leaving it to port.

9 MARKS

- 9.1 Round-the-buoy marks 1, 2S, and 2P will be yellow cylinders. Mark 1L will be an orange cylinder. Mark 1L off-set will be a yellow tetrahedron. A new mark laid in accordance with Change of Course procedures will be an orange cylinder.
- 9.2 River marks may be government navigation marks as depicted on NOAA Chart 11492 (as corrected by Notices to Mariners), or FCSA Race Marks. Government marks will be designated by their number as appearing on the chart. FCSA marks will be designated by their Alphabetic designator. Approximate positions are shown in Appendix B.
- 9.3 An orange sphere set to windward of the starting line as a windward mark will be designated "W", WHISKEY. This provision applies to both course configurations.
- 9.3 If an offset mark is set at Mark A, Mark DA or Mark W, the offset mark will be a yellow trapezoid. Boats shall sail around both marks leaving them to port.
- 9.4 A limiting mark may be set to protect the committee boat close to her and on the same end of the starting line. No boat shall pass between the limiting mark and the committee boat.

10 START

- 10.1 The Starting Line will be a line between an orange flag flown on the Race Committee/Signal Boat and a red, inflated sphere set toward the left side of the course from the Committee Boat.
- 10.3 Boats whose warning signal has not been made shall remain clear of the starting area while other boats are in their start sequence.
- 10.4 A boat starting later than five minutes after her starting signal will be scored "Did Not Start" without hearing. This changes Rules A4 and A5.

11 CHANGE OF COURSE AFTER THE START

To change the position of the next mark, the race committee will move the original mark (or the finishing line) to a new position. The change will be signaled before the leading boat has begun the leg, although the mark may not yet be in the new position. Any mark to be rounded after rounding the moved mark may be relocated without further signaling to maintain the course configuration.

12 THE FINISH

If multiple around-the-buoy races are run, the Finish Line will be between an orange flag flown on the Race Committee Boat and a white inflated sphere set to the left side and perpendicular relative to the final leg of the course. If a river mark race is run the Finish Line will be an orange sphere set perpendicular to and to the right side of the finish boat relative to the final leg of the course.

13 TIME LIMIT

- 13.1 The time limit shall be 90 minutes for each class for round the buoy races WL and WS. Boats failing to finish within 30 minutes corrected time after the first boat of their class finishes will be scored "Did not Finish." This changes rule 35 and rule A41.
- 13.2 If a single river race is signaled, the time limit will be 3 hours. Boats failing to finish within 45 minutes corrected time after the first boat of their class finishes will be

scored "Did not Finish." This changes rule 35 and rule A41.

14 PROTESTS AND REQUESTS FOR REDRESS

- 14.1. Protests shall be written on forms available at the Rudder Club. They shall be filed with the Regatta Chairman. Protest time will end 90 minutes after the last boat has finished the last race of the day. Protests will be heard in the approximate order received.
- 14.2. Protest notices will be posted on the Official Bulletin Board within 30 minutes following the protest time limit.
- 14.3. RRS Appendix T, Arbitration, is in effect.

15 SAFETY

- 15.1. The Race Committee boat and Race Support boats will maintain a listening watch on Marine VHF Channel 78(US).
- 15.2. Boats shall attempt to check in with the Race Committee by sailing past on the non-course side prior to their class Warning Signal.
- 15.3. Boats withdrawing from a race prior to finishing shall make every effort to ensure that Race Committee is notified that they have dropped out
- 15.4. All competitors are required to conform to the U.S. Coast Guard regulations and the

RRS concerning personal floatation devices and other required equipment.

- 15.5. Boats shall not impede the passage of a vessel which can safely navigate only within a narrow channel, and give way to commercial fishing vessels while fishing or vessels with restricted ability to maneuver.
- 15.6. In accordance with Rule 42.3(i), providing no significant advantage is gained, a boat may employ propulsion using an engine or other method to remain clear of a non-racing vessel when required by Inland Rules.

16 SCORING

- 16.1. PHRF Classes will be scored using PHRF Time on Time
- 16.2. One race must be completed to constitute a series.

17 PRIZES

Results will be announced at the Rudder Club following the race. First, second, and third place prizes will be awarded in classes of more than five finishing boats. First and second place prizes will be awarded in classes of four to five finishing boats. A first place prize will be awarded in classes of three or less finishing boats.

[Quick Response Code](#) - Read the following on your

Barcode Reader App for On-line registration or latest

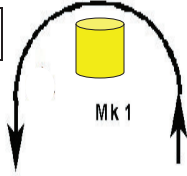
Regatta Information. PHRF Mobile

<http://www.regattanetwork.com/event/20216>

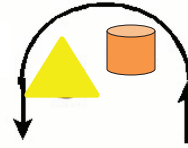


Round –the-Buoy Courses (Attachment A)

Mark 1 Round to port



Not to Scale

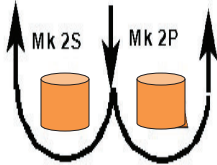


Mark 1L with optional offset Round both to port

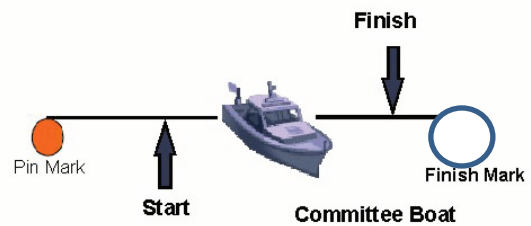
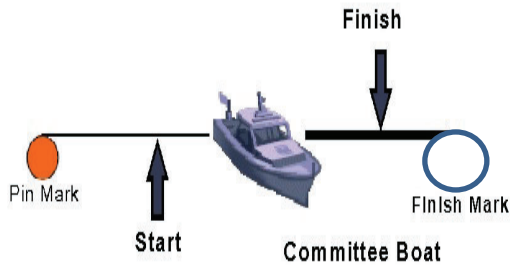
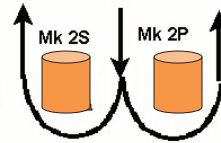
Not a mark of the course

Not to Scale

Mark 2 (Gate)
Round either mark



Mark 2 (Gate)
Round either mark



Windward Leeward Short

WS

Course: Start, 1, 2P or 2S, 1, Finish

Windward Leeward Long

WL

Course Start, 1L, 2P or 2S, 1L, Finish

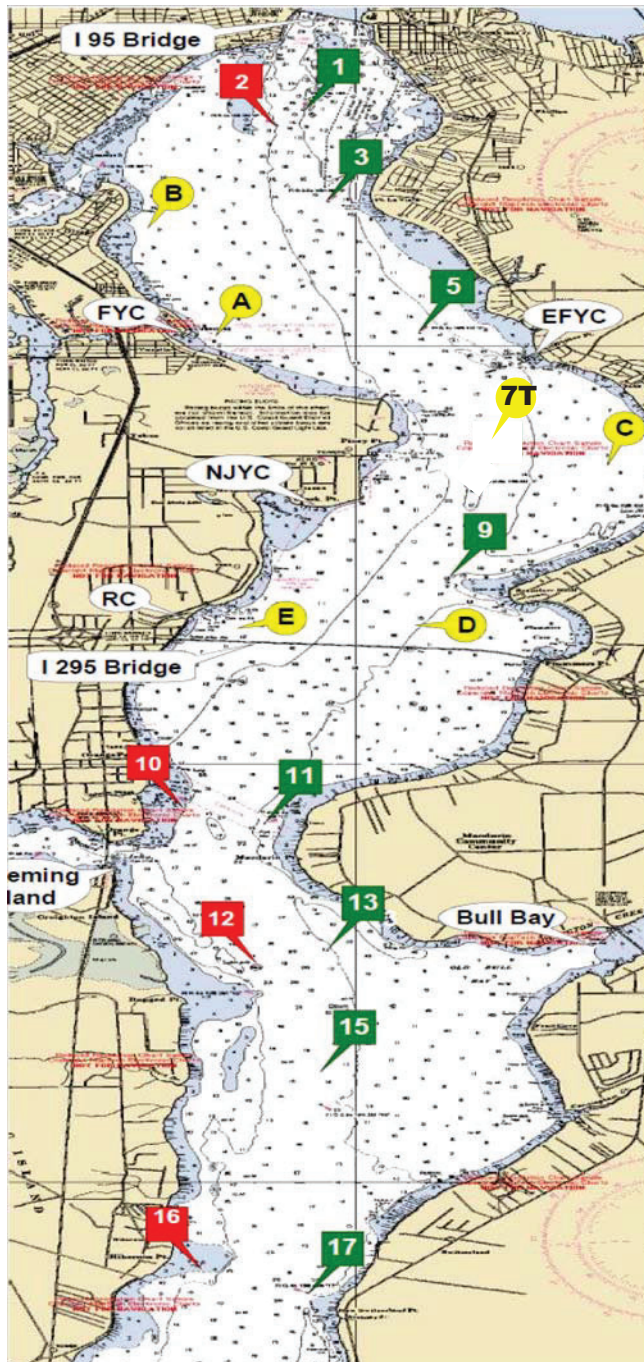
NOTE: Offset marks and gates are optional.

Attachment A

Attachment B

First Coast Sailing Association Race Marks

Distance	nm
1 to 3	1.039
1 to 5	2.787
1 to 7T	4.643
1 to A	2.793
1 to B	1.570
3 to 5	1.773
3 to 7T	3.615
3 to 9	4.638
3 to A	1.829
3 to B	1.126
3 to C	3.763
5 to 7T	1.863
5 to 9	2.926
5 to A	1.468
5 to B	2.299
5 to C	2.029
5 to D	3.486
7 to 9	1.095
7 to C	0.977
7 to D	1.697
7 to E	2.240
9 to C	1.726
9 to D	0.618
9 to E	1.486
A to B	1.523
A to C	3.140
B to C	4.303
C to D	2.328
C to E	3.111
D to E	1.127
11 to 13	2.317
11 to 15	3.400
11 to 17	5.631
11 to 17A	6.836
13 to 15	1.109
13 to 17	3.360
13 to 17A	4.575
13 to 18	5.585
15 to 17	2.252
15 to 17A	3.467
15 to 18	4.476
17 to 17A	1.216
17 to 18	2.225
17A to 18	1.010
18 to 20	2.038



Green 1
N 30° 17.813
W 81° 40.411

Red 2
N 30° 17.628
W 81° 40.635

Green 3
N 30° 16.780
W 81° 40.259

Green 5
N 30° 15.142
W 81° 39.466

Green 7 See Race Mark "7T"
N 30° 13.305
W 81° 39.077

Green 9
N 30° 12.216
W 81° 39.237

Red 10
N 30° 09.513
W 81° 41.399

Green 11
N 30° 09.305
W 81° 40.794

Red 12
N 30° 07.240
W 81° 40.800

Green 13
N 30° 07.036
W 81° 40.224

Green 15
N 30° 05.926
W 81° 40.283

Red 16
N 30° 04.038
W 81° 41.254

Green 17
N 30° 03.671
W 81° 40.393

Green 17A
N 30° 02.457
W 81° 40.522

Red 18
N 30° 01.445
W 81° 40.551

Green 19
N 30° 01.335
W 81° 40.279

Red 20
N 29° 59.822
W 81° 39.126

**Note: If set these marks will be an inflatable mark.

Race Mark "A"
N 30° 15.090 W 81° 41.160

Race Mark "B"
N 30° 11.648 W 81° 39.522

Race Mark "C"
N 30° 13.564 W 81° 37.989

Race Mark "D"
N 30° 16.581 W 81° 41.539

Race Mark "E"
N 30° 11.648 W 81° 40.822

Race Mark "7T"
N 30° 13.305 W 81° 39.077