

# 29<sup>th</sup> annual Single-Handed Regatta of Jacksonville

To be held on 12/15/2019

It's getting close to that time of year!

Time to take your boat out for a  
single-handed steer.

The cool winds, and refreshing spray,

Await our single-handed skill and  
play.

Join friends, and more friends alike,

On your sailing vessel,

Your pride and joy,

The true love of your life,

Your very expensive toy!

It's the 29<sup>th</sup> annual chance to prove  
your might as a single-handed  
master.

Grog there shall be!

Along with food for free.



4746 San Juan Avenue Telephone: (904) 384-3102  
Jacksonville, Florida 32210 [www.winddancersailmakers.com](http://www.winddancersailmakers.com)



**OCEANOAKS**  
PAINTING & CONSTRUCTION

# 29<sup>th</sup> annual Single-Handed Regatta of Jacksonville

To be held on 12/15/2019

## 1.0 RULES

1.1 Sailing vessels participating in this event are to follow the inland navigation rules (Rules of the Road) of navigation. That's the only rule! Well...set of rules.

## 2.0 ELIGIBILITY AND ENTRY

2.1 The regatta is open to boats of all classes. If it floats and has a sail you're invited to participate! 2.2 Eligible boats may enter by completing registration (below) with Alex Madsen: [dralexmadsen@gmail.com](mailto:dralexmadsen@gmail.com) or just bring the registration form and money to the pre-race meeting! 2.3 All boats will race in a single class using a rating system parallel to the FCSA PHRF by the 'The Handicapper'. Just show up and sail! The Sailing Gods will take care of the rest. That and some beer money for committee boat!

## 3.0 CLASSES

3.1 If it floats and has a sail, it's classy. All boats will race in a single class under a rating system parallel to the FCSA PHRF system created by the 'The Handicapper'. If you want to throw out a spinnaker, good luck with that. We'll try to save you if we can, but we suggest a backup survival plan.

## 4.0 SCHEDULE OF EVENTS

4.1 Saturday, December 17: 10:00 A.M. Registration at or near Green Marker 5; 11:00 Competitors Meeting; 11:55 A.M. Five Minute Warning Signal; 12:00 Start.

## 5.0 ENTRY FEE/REGISTRATION

5.1 Entry fee is \$25.00 if registering before race day. Mail checks payable to Alex Madsen accompanied by an entry form (Standard Race Entry Form available at <http://www.sailjax.com> or below (last page)). Boats may also register between the hours of 10:00 a.m. thru 11:00 a.m. on the day of the race. Race day registration is \$30.00.

## 6.0 SAILING INSTRUCTIONS

6.1 Changes to sailing instructions will be available on Race Day!

## 7.0 COURSE

7.1 The Course will start at or near Green Marker 5 of the St Johns River will be published in the Sailing Instructions or as changes thereto and signaled on the water by VHF or white board. Monitor VHF 72 before the race for any last minute changes. See Map Below for reference.

## 8.0 SAFETY

8.1 Rules of the Road apply, and all other applicable state and government regulations. Pay your Taxes! 8.2 Persons in charge with limited single handing experience are cautioned to withdraw if conditions are not favorable, lest Rán have her way with you. 8.3 It is mandatory that all participants wear a lifejacket or inflatable vest. A floating beer cooler tied to your waist works as well too! And, as you drink the beer waiting for your rescue, the cooler's buoyancy increases! It's a win-win in a losing situation. Unless you run out of beer and your buzz wears off before help arrives!

## 9.0 RACE PRIZES

9.1 First, Second and Third Place prizes will be awarded at the finish line after the race unless we spent all the money on food and beer!

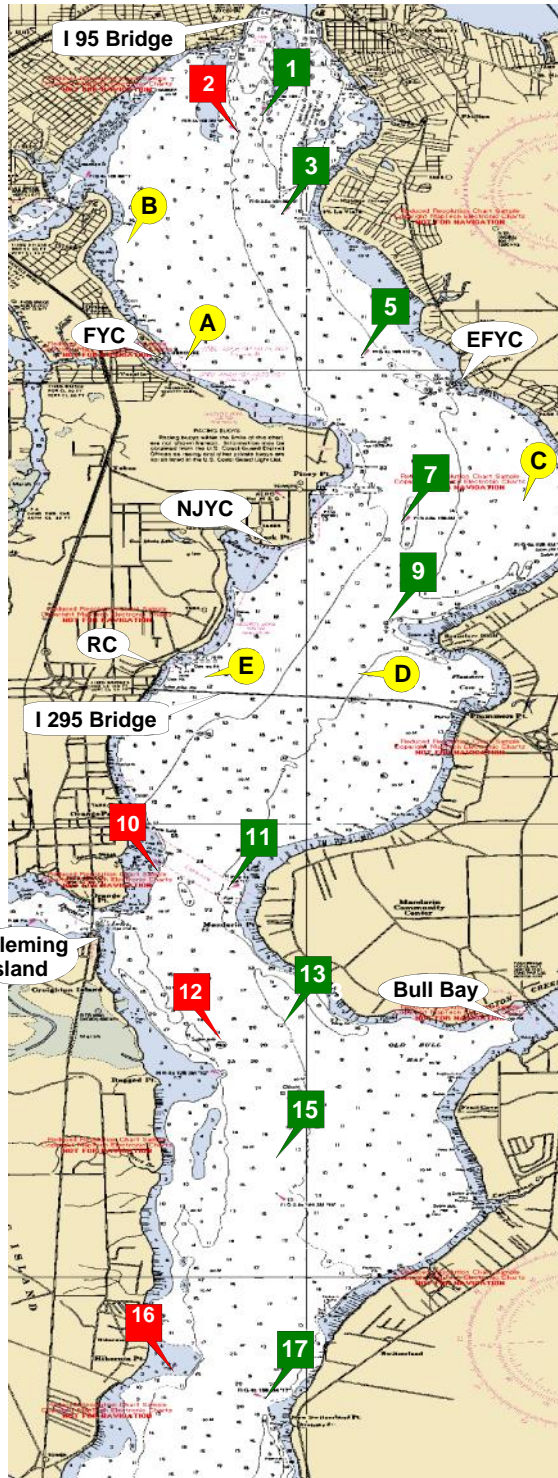
FCSA's purpose is to handicap sailboats (PHRF), make up the annual schedule, sponsor an Interclub Regatta, and hold an Awards and General Meeting in January. FCSA's Board of Directors is made up of one volunteer from each of the eight member clubs.



See a club handicapper to get a PHRF rating. New rating \$35, Renew by February 1st \$30, Change rating \$5.

The handicapping committee consists of one volunteer from each club and a volunteer Chief Handicapper. Requests for ratings are completed by a club handicapper and approved by the Chief Handicapper. Rating protests are submitted to the Chief Handicapper and voted on by the handicapping committee.

Distance	nm
1 to 3	1.039
1 to 5	2.787
1 to 7	4.643
1 to A	2.793
1 to B	1.570
3 to 5	1.773
3 to 7	3.615
3 to 9	4.638
3 to A	1.829
3 to B	1.126
3 to C	3.763
5 to 7	1.863
5 to 9	2.926
5 to A	1.468
5 to B	2.299
5 to C	2.029
5 to D	3.486
7 to 9	1.095
7 to C	0.977
7 to D	1.697
7 to E	2.240
9 to C	1.726
9 to D	0.618
9 to E	1.486
A to B	1.523
A to C	3.140
B to C	4.303
C to D	2.328
C to E	3.111
D to E	1.127
11 to 13	2.317
11 to 15	3.400
11 to 17	5.631
11 to 17A	6.836
13 to 15	1.109
13 to 17	3.360
13 to 17A	4.575
13 to 18	5.585
15 to 17	2.252
15 to 17A	3.467
15 to 18	4.476
17 to 17A	1.216
17 to 18	2.225
17A to 18	1.010
18 to 20	2.038



From 2011  
USCG Light List

**Green 1**  
N 30° 17.813  
W 81° 40.411

**Red 2**  
N 30° 17.628  
W 81° 40.635

**Green 3**  
N 30° 16.780  
W 81° 40.259

**Green 5**  
N 30° 15.142  
W 81° 39.466

**Green 7**  
N 30° 13.305  
W 81° 39.077

**Green 9**  
N 30° 12.216  
W 81° 39.237

**Red 10**  
N 30° 09.513  
W 81° 41.399

**Green 11**  
N 30° 09.305  
W 81° 40.794

**Red 12**  
N 30° 07.240  
W 81° 40.800

**Green 13**  
N 30° 07.036  
W 81° 40.224

**Green 15**  
N 30° 05.926  
W 81° 40.283

**Red 16**  
N 30° 04.038  
W 81° 41.254

**Green 17**  
N 30° 03.671  
W 81° 40.393

**Green 17A**  
N 30° 02.457  
W 81° 40.522

**Red 18**  
N 30° 01.445  
W 81° 40.551

**Green 19**  
N 30° 01.335  
W 81° 40.279

**Red 20**  
N 29° 59.822  
W 81° 39.126

FCSA offers three series of PHRF races: the Spring Series Trophy, the Fall Series Trophy, and the Offshore Trophy. When a rated sailboat is entered in a club race, noted as a FCSA points race, the boat is competing for a club trophy for that race and points toward the annual trophy for the series.

Rules for the annual trophies:

Spring and Fall Series Trophies:  
6 races each, 1 throw-out race.

Offshore Series Trophies:  
14 races, 7 throw-out races.

Note: There will be no throw out races in a series if less than four races are held due to cancellation or abandonment of races in that series.

Race scoring will be the low point system, 2012-2016 Racing Rules of Sailing, Appendix A, Rule A4.

Series scoring will be as follows:

DNF, RAF = # that started the race  
DNS, DSQ = # that came to the start  
DNC = # that attempted to race  
DNE = # entered in the series + 1  
Ties decided under Appendix A8.

Trophies divided by Spinnaker, Non-Spinnaker, and Cruising classes. All competitors must have a current FCSA PHRF rating and be a member of one of the seven FCSA member clubs.

Also From 2011  
USCG Light List

**Race Can "C"**  
N 30° 13.564  
W 81° 37.989

**Race Can "A"**  
N 30° 15.090  
W 81° 41.160

**Race Can "D"**  
N 30° 11.648  
W 81° 39.522

**Race Can "B"**  
N 30° 16.581  
W 81° 41.539

**Race Can "E"**  
N 30° 11.648  
W 81° 40.822

(Check FCSA Website [www.sailjax.com](http://www.sailjax.com) for contacts, addresses, phone numbers of club representatives)

- EFYC - Epping Forest Yacht Club [www.efyc.com](http://www.efyc.com)
- FYC - Florida Yacht Club [www.thefloridayachtclub.org](http://www.thefloridayachtclub.org)
- NJYC - Navy Jax Yacht Club [www.navyjaxyachtclub.com](http://www.navyjaxyachtclub.com)
- RCoJ - Rudder Club [www.rudderclub.com](http://www.rudderclub.com)

- NFCC - North Florida Cruising Club [www.nfccsail.com](http://www.nfccsail.com)
- SAYC - St Augustine Yacht Club [www.staugustineyachtclub.com](http://www.staugustineyachtclub.com)
- HRYC - Halifax River Yacht Club [www.hryc.com](http://www.hryc.com)
- SYC - Smyrna Yacht Club [www.smyrnayachtclub.com](http://www.smyrnayachtclub.com)



# FIRST COAST SAILING ASSOCIATION

## Standard Entry Form for Yacht Racing

Race \_\_\_\_\_ Race \_\_\_\_\_  
Date \_\_\_\_\_

Yacht Name \_\_\_\_\_ Sail # \_\_\_\_\_

Yacht Make \_\_\_\_\_ Length \_\_\_\_\_ Color \_\_\_\_\_  
Hull/Trim \_\_\_\_\_ / \_\_\_\_\_

Owner \_\_\_\_\_ Home Phone \_\_\_\_\_

Skipper \_\_\_\_\_ Work Phone \_\_\_\_\_

Cell Phone \_\_\_\_\_ Vessel Docked at \_\_\_\_\_

E-mail for Results \_\_\_\_\_

Mailing Address Street \_\_\_\_\_

Mailing Address City, St, Zip \_\_\_\_\_

Emergency Contact \_\_\_\_\_ Phone \_\_\_\_\_

Names of Crew \_\_\_\_\_

Names of Crew \_\_\_\_\_

Yacht Club Membership \_\_\_\_\_ US Sailing # \_\_\_\_\_

Class Entered:  - PHRF Spinnaker  
 - PHRF Non-Spinnaker PHRF Rating \_\_\_\_\_  
 - PHRF Cruiser  
 - One Design Class \_\_\_\_\_ Portsmouth Rating \_\_\_\_\_

THE UNDERSIGNED, for and on behalf of himself/herself, his/her guests, and the members of the crew of his/her yacht, agrees to be bound by the Racing Rules of Sailing and by all other rules that govern this event; and hereby assumes all risk of accident and expressly agrees that the sponsoring yacht club shall not be liable, under any circumstance, for any loss or injury to participants or others, or the loss or damage to any yacht. The undersigned further agrees to indemnify and does hereby indemnify and hold the sponsoring yacht club and First Coast Sailing Association free and harmless from and against any and all losses, costs, damages, attorney's fees, and liability of any kind or nature whatsoever growing out of or resulting from participation in this event.

Signature \_\_\_\_\_ Date \_\_\_\_\_

Refer to Race Announcement for entry fee and registration instructions.

Race Schedule and Race Announcements may be downloaded from the FCSA website: [www.sailjax.com](http://www.sailjax.com)