

## ***What is the Werewolf Series?***

Many of you may have heard of a new concept we have started at the Rudder Club called the **Werewolf Series**. The races are evening races that are held once a month on every Full Moon. Yes, we race whatever day that happens to be Full Moon. The **Werewolf Series** is meant to be a technically challenging night racing series fostering spirited competition among cruising boats on the St. Johns River. The racing is informal, fun, as serious as you want to make it, and easy.

Races are open to all cruising boats with a PHRF rating, from the Rudder Club and neighboring clubs, but you must be prepared for night sailing. This means you must have a working VHF radio, appropriate navigation lights, safety equipment for after-sunset competition, in all conditions. There are no exceptions.

Our last two races were picture-perfect evening races and very enjoyable. We would like them all to be that way but sometimes we will have our challenges. That's where the technically challenging aspect of this race series comes into play. The courses are simple and we try not to overcomplicate things. After you register, you will be given a start time, much like the days of staggered starts in the Mug Race. Each boat has a start time according to its handicap rating. You start near the club between two buoys at your starting time. Take note of your starting time and make sure you start no sooner than your assigned time. The faster boats will be watching! Slower boats start first. Fastest boat starts last. Finishes are generally close. First boat to finish wins. Your place at the finish is your place in that race. Since there is no Race Committee, communication by VHF radio is important for information as well as safety.

## ***How Do I Find Out More and Sign Up?***

This is also easy. First of all, racing is FREE! Simply call or e-mail one of our members, Gary Van Tassel.

Phone number (843) 513-5794. Gary's e-mail address: [gwt2@att.net](mailto:gwt2@att.net)

You can download a copy of the Sailing Instructions from the Rudder Club website [www.rudderclub.com](http://www.rudderclub.com) or First Coast Sailing Association website [www.sailjax.com](http://www.sailjax.com)

## ***When are the next few races?***

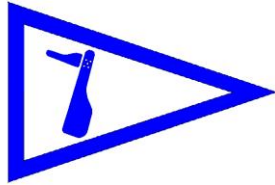
September 14th, Saturday

October 13th, Sunday

November 12th, Thursday

December 12th, Thursday

The next race is Saturday, September 14<sup>th</sup>, the same date as our General Membership Meeting. This is not an issue! We show up at the club at Happy Hour from 5-6 pm. General Membership Meeting is at 6:00 pm. Nice steak cook-out immediately follows the meeting. If necessary, we will simply postpone the starting times for our **Werewolf Series** Race.



# Rudder Club Werewolf Series

*The Rudder Club of Jacksonville*  
8533 Malaga Avenue  
Jacksonville, FL 32244, USA

## **RULES**

1.1 The regatta will be governed by The Racing Rules of Sailing (RRS), applicable class rules, and the rules of the First Coast Sailing Association except as modified by these Sailing Instructions.

1.2 **SAFETY:** The Werewolf Series is meant to be a technically challenging night racing series fostering spirited competition on the St. Johns River. It is the responsibility of the skipper to ensure the safety of the boat and crew at all times. The boat shall be equipped with a working VHF radio, appropriate navigation lights, safety equipment for after-sunset competition, in all conditions, no exceptions.

1.3 **RADIO COMMUNICATION:** Competing yachts shall monitor VHF channel **78** at all times. It shall be the responsibility of each boat to check-in using VHF radio communication at least ten minutes prior to the first starting time. Course information and oral changes to the Sailing Instructions may be made on the water and communicated to each boat via VHF radio at the time of check-in. All competitors shall monitor VHF channel **78** throughout the race to render assistance however possible. Competitors are encouraged to communicate on matters of safety. Protests and finish times shall be hailed using VHF channel **78**. Boats withdrawing from a race prior to finishing shall make every effort to ensure that Race Chair is notified that they have dropped out.

1.5 **VERY IMPORTANT:** In order to maximize everyone's time on the water, this event does not operate under a traditional race committee format. It is imperative to success that each skipper behaves with a Corinthian spirit and accurately reports events in accordance to the rules.

## **2 ELIGIBILITY AND ENTRY**

2.1 The race series is open to all boats holding a PHRF rating certificate issued by the First Coast Sailing Association.

2.2 All classes will sail together on a single course.

2.3 Eligible boats may enter and acquire a starting time by contacting the Race Chair prior to noon on the day of the race.

2.4 Race Chair is Gary Van Tassel. [gwvt2@att.net](mailto:gwvt2@att.net) 843-513-5794

## **3 FEES**

3.1 There is no entry fee.

## **4 SCHEDULE**

4.1 Each race in the series will be held on the night of every full moon. The schedule for remainder of 2019 is as follows:

September 14<sup>th</sup>, Saturday  
October 13<sup>th</sup>, Sunday  
November 12<sup>th</sup>, Thursday  
December 12<sup>th</sup>, Thursday

4.2 The first boat to start will be at 19:30:00 local time.

## **5 SAILING INSTRUCTIONS**

5.1 Races will be held as a time on distance "pursuit" race with the slowest rated registered boat starting first. Each boat is responsible for acquiring a start time per section 2 of these instructions.

5.2 Each boat shall have a designated person on the bow at the start and finish to ensure the line is called accurately and on time. Official time shall be based on NIST time. [WWW.time.gov](http://WWW.time.gov)

5.3 The Race Chair shall have a private discussion with any skipper suspected of not following to the start/finish rules. The Race Chair has the right to revoke a boat's official start time at their sole discretion if they have determined the competitor is not acting in good faith.

## **6 VENUE**

The racing area will be in the St. Johns River between the Buckman Bridge to the south and the Fuller Warren Bridge to the north as depicted on NOAA Chart 11492.

## **7 THE COURSES**

7.1 The starting and finish line will be placed by the designated Race Committee (RC) no later than 19:15:00. The starting/finish line will be comprised of two temporary marks set approximately 75' apart and as square to the first leg of the assigned course as possible. One of the marks shall be set as close to the following coordinates as possible:

30:11.648'N  
081:40.822'W

7.2 Marks of the course, except for start and finish, will be government navigation markers as depicted in Attachment "A." RC will remove the temporary start/finish marks after the last boat finishes or the Time Limit has expired. RC will hail the fleet when the marks have been set and removed.

7.3 The course will be defined by the start/finish line and river markers "9" and "5". Direction of rounding will be based on conditions. Distance is 8.77 NM

7.4 In the event of adverse conditions that make the full course not viable; the RC will choose to either use "9" or "5" as the single turning point. Distances are 3.66 NM and 8.01 NM respectively. All roundings to Starboard.

7.5 RC will designate the course and the direction of rounding no later than 19:15:00 and this information will be repeated via VHF radio as each boat checks in. It is the responsibility of the skipper to know his/her start time.

## **8 TIME LIMIT**

8.1 Time Limit shall be four hours following the first starting time or the time of the next to last boat to finish, whichever is earlier. Yachts failing to finish within this Time Limit will be scored "Did Not Finish."

## **9 SCORING**

9.1 Places will be determined based on order of finish. Boats shall hail the RC using VHF Channel 78 as they finish. If RC is unreachable, boats shall record the approximate time of finish and boat ahead and behind. This information shall be provided to RC at the first available opportunity.

9.2 Results for each race will be posted on the RCOJ Facebook Page the following day.

9.3 Overall series points will be tallied by the Race Chair following each race. Low point will determine the overall series results.

**10. PROTESTS:** The protest time limit for notification of the Race Chair (RC) is 15 minutes after the Time Limit. Notification of protests and requests for redress shall be communicated to the Race Chair (RC) within the protest notification time limit. Protests and requests for redress shall be written on forms available at the Rudder Club Race Office or the FCSA website. They shall be filed with the Race Chair within 24 hours after the Time Limit. The Race Chair will arrange for a Protest or Redress Hearing as applicable.

**11. PRIZES:** First, Second, and Third place prizes will be awarded for the series. The Werewolf Trophy will be awarded to the overall winner and the skipper shall be designated as the King or Queen of Darkness until the next series concludes.

**12. PARTICIPATION:** Sailing is an activity that has an inherent risk of damage and injury. Competitors in this race series are participating entirely at their own risk. See RRS 4, Decision to Race. Participation in this race series constitutes an acceptance of and agreement to abide by the Racing Rules of Sailing and these Sailing Instructions.

**13. FURTHER INFORMATION:** For further information, please contact:

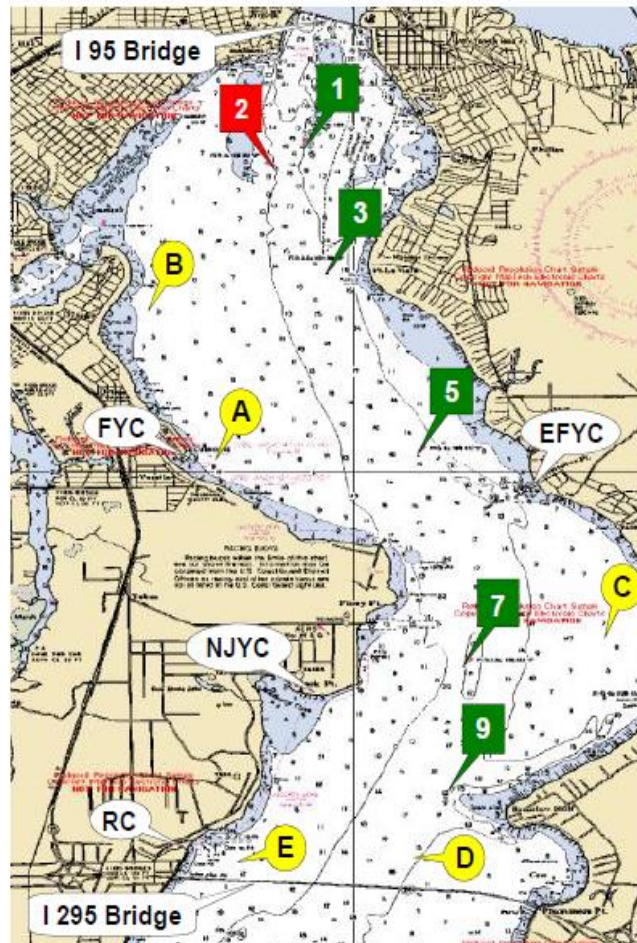
**Race Chair, Gary Van Tassel**

[gwvt2@att.net](mailto:gwvt2@att.net)

**843-513-5794**

# ATTACHMENT A

Distance	nm
1 to 3	1.039
1 to 5	2.787
1 to 7	4.643
1 to A	2.793
1 to B	1.570
3 to 5	1.773
3 to 7	3.615
3 to 9	4.638
3 to A	1.829
3 to B	1.126
3 to C	3.763
5 to 7	1.863
5 to 9	2.926
5 to A	1.468
5 to B	2.299
5 to C	2.029
5 to D	3.486
7 to 9	1.095
7 to C	0.977
7 to D	1.697
7 to E	2.240



*From 2011  
USCG Light List*

**Green 1**  
N 30° 17.813  
W 81° 40.411

**Red 2**  
N 30° 17.628  
W 81° 40.635

**Green 3**  
N 30° 16.780  
W 81° 40.259

**Green 5**  
N 30° 15.142  
W 81° 39.466

**Green 7**  
N 30° 13.305  
W 81° 39.077

**Green 9**  
N 30° 12.216  
W 81° 39.237

**Red 10**  
N 30° 09.513  
W 81° 41.399

**Green 11**  
N 30° 09.305  
W 81° 40.794

*Also From 2011  
USCG Light List*

**Race Can "C"**  
N 30° 13.564  
W 81° 37.989

**Race Can "A"**  
N 30° 15.090  
W 81° 41.160

**Race Can "D"**  
N 30° 11.648  
W 81° 39.522

**Race Can "B"**  
N 30° 16.581  
W 81° 41.539

**Race Can "E"**  
N 30° 11.648  
W 81° 40.822