

**King's Day Regatta  
Saturday, November 10, 2018  
Epping Forest Yacht & Country Club**

**NOTICE OF RACE & SAILING INSTRUCTIONS**

**Due to damage caused by recent storms and construction in the marina non-members of Epping Forest Yacht and Country Club will not be permitted to bring their boats into the marina. The event will start and end on the water.**

**All participants are requested to acknowledge their intent to race  
along with their boat name, class, and PHRF Rating  
by calling Keith Keller 904-739-7150 or by e-mailing [kkeller@efyc.com](mailto:kkeller@efyc.com)  
by Friday noon November 2nd. This is non-binding.**

**This race completes the series for recognition on the DuPont Cup started in 2017 at the DuPont Cup Race and commencing with this race for years 2017 & 2018.**

# NOTICE OF RACE

## **1.0 RULES :**

- 1.1 The Race will be governed by the current Racing Rules of Sailing (RRS) and the PHRF rules of the First Coast Sailing Association (FCSA). These may be altered by these Sailing Instructions. Epping Forest Yacht and Country Club (EFY&CC) is the organizing authority for this Race/Regatta.

## **2.0 ELIGIBILITY AND ENTRY :**

- 2.1 Boats must have a PHRF Rating to participate. Boats with a current PHRF Certificate issued by the First Coast Sailing Association (FCSA) as listed in the [www.sailjax.com](http://www.sailjax.com) website will accumulate points towards the FCSA Annual Series Trophies.
- 2.2 All boats participating in the Spinnaker and Non-Spinnaker classes with LP measurements equal to or exceeding 130% of the base of the triangle (>130% of J) shall have sail numbers displayed on mainsails, spinnakers, and headsails. Boats in the Cruiser Class shall have sail numbers on the mainsails as a minimum.

## **3.0 REGISTRATION :**

- 3.1 Prior to racing, each yacht shall be properly registered by completing the Standard Race Entry Form found at [www.sailjax.com](http://www.sailjax.com) and shall have submitted the appropriate registration fee.
- 3.2 Registration forms and fees may be handed to the Race Committee on the Race Committee Boat on the day of the race during the registration period. See the section on Schedule below for times.
- 3.3 Boats may also register by bringing their registration form with the proper fee to the Epping Forest Yacht & Country Club Administration Office known as the "Carriage House" before 3PM on the Friday before the race.

## **4.0 CLASSES :**

- 4.1 Boats must register in either the Spinnaker Class, the Non-Spinnaker Class, or the Cruiser Class.
- 4.2 The class entered must be declared on the Standard Race Entry Form before the close of registration.

## **5.0 SCHEDULE OF EVENTS :**

- 5.1 For on the water registration the registration/Committee Boat will be located at the starting line on the St. John's River approximately 1/4mile due west of the Epping Marina entrance.
- 5.2 The on the water registration period is 10:00 AM to 11:00 AM on the day of the race
- 5.3 There will be no "Skippers Meeting".
- 5.4 Each class will race one race scheduled for Saturday, November 10<sup>th</sup>, 2018.
- 5.5 Warning signal for first start at approximately 11:55 AM on the day of the race.
- 5.6 The first start will be approximately 12 Noon.
- 5.7 There will be no awards presentation nor social event after the event at EFY&CC due to the marina being closed.

## **6.0 ENTRY FEE/REGISTRATION :**

- 6.1 Regatta entry fee is \$ 30.00 for EFY&CC Members and \$ 35.00 for Non EFY&CC Members. Payable to the EFY&CC.
- 6.2 Member fees may be charged to Club account. Non-member fees may be check or the exact amount in cash.
- 6.3 If submitting payment and registration form to Race Committee Boat on the water, please place in a zip lock bag to prevent damage.

## **7.0 RACING AREA :**

- 7.1 The racing area will be on the St. Johns River between the Fuller Warren and Buckman Bridges as depicted on NOAA Chart 11492.

## **8.0 SAFETY :**

- 8.1 All competitors are required to comply with U.S. Coast Guard Regulations and the RRS Guidelines concerning vessel safety, personal flotation devices and required equipment.
- 8.2 Boats shall not impede the passage of a vessel that can only navigate within a narrow channel or commercial fishing or vessels with restricted ability to maneuver.
- 8.3 The Race Committee will monitor VHF Channel 72.

## **9.0 INFORMATION :**

- 9.1 Contact is Keith Keller at [kkeller@efyc.com](mailto:kkeller@efyc.com) or office 904-739-7150.

# SAILING INSTRUCTIONS

## **1.0 NOTICES TO COMPETITORS AND CHANGES TO THE SAILING INSTRUCTIONS:**

- 1.1 Any changes or notices to competitors will be incorporated into the Schedule Section of the sailjax.com website. The Notice of Race and/or the Sailing Instructions will be updated to show any changes. These changes will be posted on the website no later than 4 PM on the Thursday before the race. If there are changes, the "Come with-in Hail" Flag will be flown on the committee boat to signify any communications during this same period of time.
- 1.2 The race committee may make verbal changes to the Race Instructions on VHF Channel 72 for 45 minutes following the close of the registration period.

## **2.0 COMMUNICATIONS BEFORE AND DURING THE RACE**

- 2.1 The Race Committee will monitor VHF Channel 72.
- 2.2 Boats shall check in with the Race Committee Boat by passing behind the stern of the Committee Boat and hailing their boat name and "checking in".
- 2.3 The Race Committee will attempt to hail boats that are over the start line early via VHF Channel 72, however the race flags as shown in the Rules of Racing shall govern.
- 2.4 Boats withdrawing from the race prior to finishing shall make every effort to contact the Race Committee Boat of their intentions.

## **3.0 MARKS :**

- 3.1 The course may be a combination of Navigation Marks on the River and marks set by the Race Committee.

## **4.0 THE COURSE :**

- 4.1 The course(s) will be posted on white board(s) on the starboard side of the Committee Boat ½ hour before the start of the first race.
- 4.2 "W" on the white board will designate the Windward Mark from the starting line
- 4.3 "L" on the white board will designate the Leeward Mark from the starting line.
- 4.4 "O" on the white board will designate an Offset Mark - if used. The course heading in degrees will be given from the previous mark.
- 4.5 Subscript "p" or "s" will designate leaving that mark with the mark on the port or starboard side of the boat respectively.
- 4.6 A "1" on the white board will signify once around, a "2" will signify twice around, etc.
- 4.7 Government Navigation Marks will be designated by the Numerical Mark Number.
- 4.8 The starting line will be closed except for boats starting or finishing.

## **5.0 CLASS FLAGS :**

- 5.1 The Spinnaker Class Flag will be the T Flag.
- 5.2 The Non-Spinnaker Class Flag will be the B Flag.
- 5.3 The Cruiser Class Flag will be the Q Flag.
- 5.4 More than one class flag may be raised at one time to signify multiple classes starting together.

## **6.0 RACE SCHEDULE :**

- 6.1 One single race for each class is scheduled for Saturday, November 10<sup>th</sup>, 2018.
- 6.2 Warning signal for first start at approximately 11:55 AM.
- 6.3 The starting time for the first class will be approximately 12:00 PM.

## **7.0 START :**

- 7.1 Two Starts are planned. The Spinnaker Class & Non-Spin Boats will start first and the Cruiser Class Boats will start second.
- 7.2 The starting line will be between the orange flag on the Committee Boat and a yellow inflatable mark set to the left of the Committee Boat as boats approach the starting line towards the windward mark.

## **8.0 STARTING SEQUENCE : (Similar for each class - Flags shall govern, horns are not official)**

- 8.1 Three horn blasts (designating "get ready") approximately 1 minute before the warning signal of the starting class.
- 8.2 The Class Flag is raised with one horn blast as the warning signal designating the beginning of their five minute sequence.
- 8.3 Four minutes before their start the Preparatory Flag "P" will be raised with one horn blast.
- 8.4 One minute before their start the Preparatory Flag "P" will be lowered with one horn blast.
- 8.5 The Class Flag is lowered with one horn blast designating the start for that class.

8.6 The Race Committee will wait until all boats from the previous class have started, but not more than 10 minutes, before sounding the "get ready" horn for the next start. Boats not starting within 15 minutes of their scheduled start shall be scored "Did Not Start" (DNS).

**9.0 RECALLS :**

9.1 Individual recalls will be signaled in accordance with RRS 29.1. The Race Committee will attempt to hail the sail numbers of infringing yacht(s) by hailing and or radio on VHF 72. Failure to make or hear such a hail will not be grounds for redress nor relieve a yacht of her responsibility to start correctly.

9.2 General recalls will be signaled in accordance with RRS 29.2.

**10.0 FINISH :**

10.1 The finish will be between the orange flag on the Committee Boat and a yellow inflatable set to the left of the Committee Boat relative to the final mark of the course. (The Committee Boat will not relocate for the finish).

**11.0 TIME LIMIT :**

11.1 The time limit for each class shall be 3 hours from the starting time of it's class.

11.2 A boat failing to finish within 60 minutes in corrected time after the first boat in her class will be scored "Did Not Finish" without a hearing. This changes RRS Rule 35 and Rule A4.1.

**12.0 SCORING THE RACE :**

12.1 Classes will be scored using PHRF Time and Distance.

12.2 The Low Point scoring system will apply per RRS Appendix A.

**13.0 PROTESTS :**

13.1 Intent to protest(s) shall be hailed to the Race Committee on the Race Committee boat within 15 minutes after finishing their race. A protest flag shall be visible near the stern of the protesting boat when hailing the committee boat.

13.2 A filled out formal protest form shall be turned in to the Epping Forest Office or e-mailed to Keith Keller before 6 pm Sunday November 11th to be considered.

**14.0 RACE PRIZES :**

14.1 Prizes/trophies will be awarded at the discretion on the race committee depending on participation in each class.

14.2 There will be no post-race activities following the race.

14.3 Race results will be posted to the [www.sailjax.com](http://www.sailjax.com) website as soon as the scoring and reporting process is complete.

14.4 Arrangements to pick up your prize/trophy can be made by directly contacting Keith Keller via email [kkeller@efyc.com](mailto:kkeller@efyc.com).

**15.0 INFORMATION :**

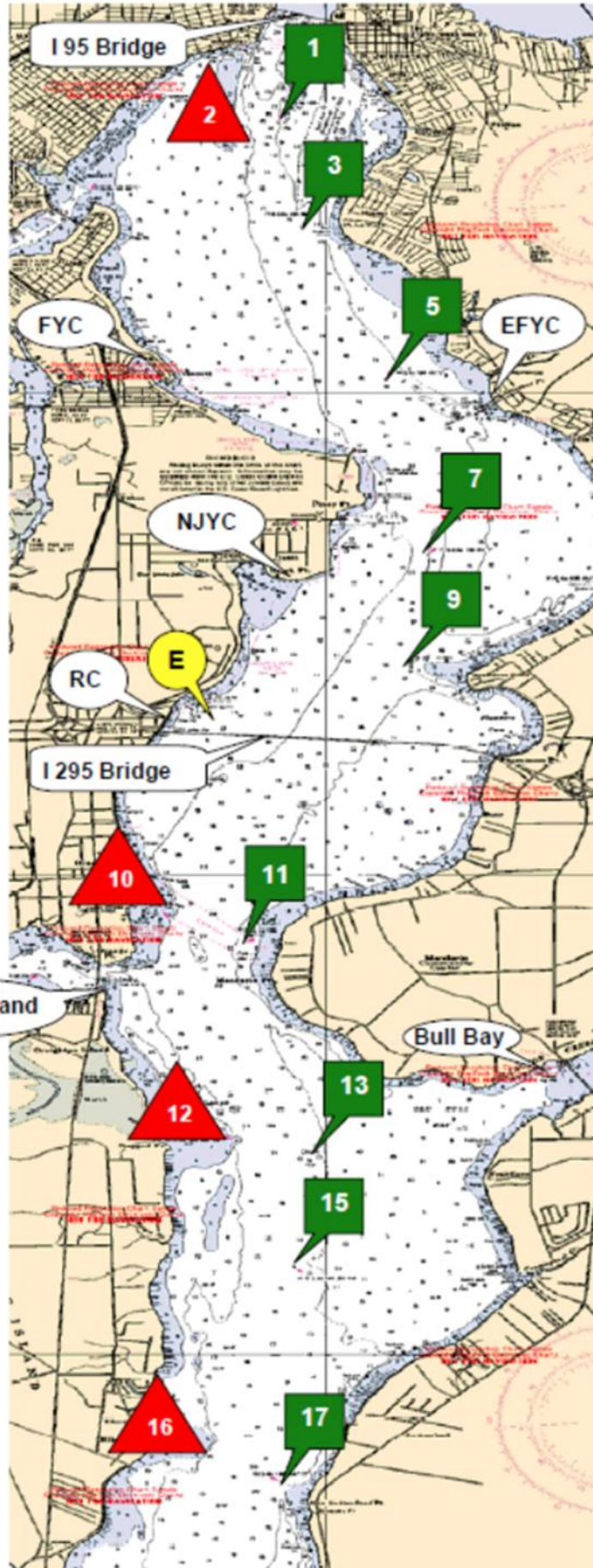
15.1 Contact is Keith Keller at Office 904-739-7150 or [kkeller@efyc.com](mailto:kkeller@efyc.com).



- 1 to 3 1.104 nm
- 1 to 5 2.787 nm
- 1 to 7 4.643 nm
- 3 to 5 1.703 nm
- 3 to 7 3.546 nm
- 5 to 7 1.863 nm
- 5 to 9 2.926 nm
- 7 to 9 1.095 nm
- 7 to E 2.240 nm
- 9 to E 1.486 nm
  
- 11 to 13 2.317 nm
- 11 to 15 3.400 nm
- 11 to 17 5.631 nm
- 13 to 15 1.109 nm
- 13 to 17 3.360 nm
- 15 to 17 2.252 nm



\* Marks 2, 10, 12, 16 are well placed. Do not sail out of the channel without local knowledge.



From 2009  
USCG Light List

River Mark G1  
N 30° 17.813  
W 81° 40.411

River Mark R2  
N 30° 17.628  
W 81° 40.635

River Mark G3  
N 30° 16.719  
W 81° 40.218

River Mark G5  
N 30° 15.142  
W 81° 39.466

River Mark G7  
N 30° 13.305  
W 81° 39.077

River Mark G9  
N 30° 12.216  
W 81° 39.237

Race Mark "E"  
N 30° 11.648  
W 81° 40.822

River Mark R10  
N 30° 09.513  
W 81° 41.399

River Mark G11  
N 30° 09.305  
W 81° 40.794

River Mark R12  
N 30° 07.240  
W 81° 40.800

River Mark G13  
N 30° 07.036  
W 81° 40.224

River Mark G15  
N 30° 05.926  
W 81° 40.283

River Mark R16  
N 30° 04.038  
W 81° 41.254

River Mark G17  
N 30° 03.671  
W 81° 40.393