



St. Augustine Yacht Club

Founded 1873

2018 Wednesday Night Race Series

(1/17/2018)

This year the St. Augustine Yacht Club will be hosting three series of Wednesday Night Races, with five races in each series. Races are open to anyone interested in fun and friendly competition on the water. Enclosed please find a Notice of Race, Race Instructions and a Registration Form for boats not already listed in the fleet.

The club will host a post-race happy hour at the club after each race. All racers and crew are welcome. Awards and trophies will be presented at the May Awards Banquet at SAYC.

For more information please contact:

John Grannis
Rear Commodore of Sail
St Augustine Yacht Club

(904) 571-2227 (cell phone)
Email: jgfla1@gmail.com



Wednesday Night Race – 2018 Notice of Race

1. Rules Races will be governed by The Racing Rules of Sailing (RRS 2017-2020); the prescriptions of the United States Sailing Association, and by these sailing instructions.

2. Eligibility All sailboats. Everyone should try to pre-register (fill out race form), but feel free to show up the night of a race and check in on channel 72. **All boats should have a current PHRF rating issued by the First Coast Sailing Association.** (See Sailjax.com for forms). Boats without a rating from FCSA will be issued a provisional rating by SAYC.

3. Schedule The race series will consist of three series of 5 races, scheduled as follows:

<u>March Series</u>	<u>Summer Series</u>	<u>Fall Series</u>
Race #1 Mar 14 (5:00 p.m.)	Race #1 May 23 (5:00 p.m.)	Race #1 Aug 22 (5:00 p.m.)
Race #2 Mar 28 (5:00 p.m.)	Race #2 June 6 (5:00 p.m.)	Race #2 Sept 5 (5:00 p.m.)
Race #3 Apr 11 (5:00 p.m.)	Race #3 June 20 (5:00 p.m.)	Race #3 Sept 19 (5:00 p.m.)
Race #4 Apr 25 (5:00 p.m.)	Race #4 July 18 (5:00 p.m.)	Race #4 Oct 3 (5:00 p.m.)
Race #5 May 9 (5:00 p.m.)	Race #5 Aug 1 (5:00 p.m.)	Race #5 Oct 7 (5:00 p.m.)

4. Registration Boats already in the fleet may register on the SAYC website (staugustineyachtclub.com). Boats not listed in the fleet on the SAYC website may register in advance by completing the attached Entry Form/Waiver and sending it to the address listed on the form.

5. Fees Entry Fee per boat for each series is \$30.00 inc. tax for SAYC members and \$55.00 inc. tax for non-SAYC members, due at the beginning of the series. Entry fee checks made out to the St. Augustine Yacht Club should be sent to St Augustine Yacht Club, 442 Ocean Vista Ave., St. Augustine, FL 32080. SAYC members may elect to charge the Entry Fee to their account.

6. Instructions See attached sailing instructions.

7. Fleets Boats register to race in one of two PHRF fleets: 'Cruising Fleet' or 'Performance Fleet'. *Performance and Cruising Fleet boats may fly a spinnaker but must choose to do so at the start of each race and thus will use either FCSA Spinnaker Rating.*

8. Scoring Boats will be scored for each race. The series winner will be the boat with the fewest total points after excluding the worst score. Points will be awarded using the Low Point System as follows:

First Place	1 pts
Second Place	2 pts
Third Place	3 pts
Etc.	

All non-finishers (DNS, DNF, DSQ) will be scored in accordance with Rule A9.

9. Prizes Trophies will be awarded for first, second and third for each race series in both fleets.



Wednesday Night Race - Sailing Instructions (Spring Series)

Boats will race in two PHRF fleets. The Cruising Fleet will consist largely of heavier displacement cruising type boats with higher PHRFs and/or less experienced crew, and use FCSA Ratings. *Cruisers will be able to use spinnakers but **must** declare so before the start of each race and hence they will use their lower PHRF rating for that race.* The Performance Fleet will generally include faster boats with lower PHRFs and/or more experienced crew, and will use the FCSA Rating. ***The faster Performance fleet may be required to sail a longer course.*** Boats in the Performance Fleet can elect to fly a spinnaker *but **must** declare so before the start of each race and hence will use their lower handicap for that race.*

Wednesday Night Races will be sailed on one of **Five** inland courses. The course will be selected the day of the race depending on wind conditions and will be announced on Channel 72 approximately 30 minutes before the start. The races in all series (WNR 1, 2 & 3) will start at 5:00 pm. Performance and Cruising starting sequence will be announced approximately 25 minutes before the start. All races will use the following start sequence. The timing of the start is determined by the removal of the class flags (time pieces and watches are relative). Sounds are secondary and may fail. The Race Committee can delay start times, combine fleets, or separate fleets at its discretion.

5 minutes before the start	Class Flags Raised	Performance= Code flag 5 Cruising= Code flag 6	Horn Sound
4 minutes before the start	Preparatory Signal	“P” Flag raised (Blue with white square)	Horn Sound
1 minute before the start	“P” Flag Removed		Long Horn Sound
0 time The Start		Class Flags Removed	Horn Sound

All sailors must check in with the committee boat at least 15 minutes before the start on VHF channel 72 or by passing by the Committee boat and hailing. Election to fly a spinnaker in both Performance and Cruising classes must be announced prior to the start of each race. The race committee will monitor channel 72 and can provide race information up until the class flags are raised.

Short Courses A (light wind generally from a southerly direction) and B (light wind northerly) run north-south, beginning at Day Mark 55 north of the Vilano Beach Bridge on the ICW, to a mark set off Boating Club Road and Day Mark 57 and back to the start. In heavier airs, the Race Committee may elect to extend the courses by using Long Courses C or for Cruising Class ONLY, depending on wind direction. Fifth course of a short Triangle between Mark 55, Mark 57 and inflated anchored buoy on the west side of the river. SEE diagrams of courses below.

Courses may be shortened if conditions require it. The 720 Degree Turn Rule will be in effect (rule 44.1 and 44.2).

The following flags may be flown by the committee boat:

Postponement:	rectangular pennant with red and white stripes
General Recall:	yellow pennant outlined in blue
Individual Recall:	white square with a blue cross
Shorten Course:	a white square with a blue square in its center
Come Within Hail:	Code Flag L, yellow and black squares

These races are intended to be a fun and friendly event, so protests are strongly discouraged. Varying boats with captains and crew of differing skill levels will be racing in close quarters so everyone is asked to be courteous and give spacing where needed. The Racing Rules of Sailing should be adhered to at all times.

St Augustine Yacht Club 2018 Wednesday Night Race Courses

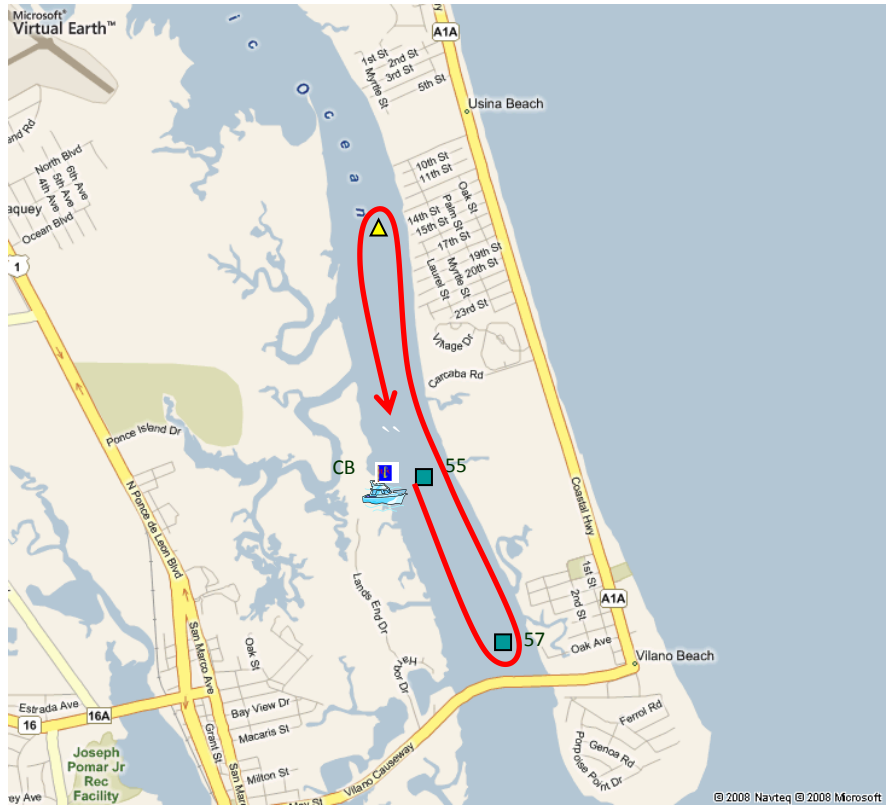
Short Course A Light Southerly Winds

South from Day Mark 55 to Day Mark 57, to a buoy set off Boating Club Road & back to 55 (2.76 NM)

Cruising 1 Lap
Performance 2 Laps

Leave marks to port

NOTE: Committee boat & 55 are not marks of the course except the start and finish.



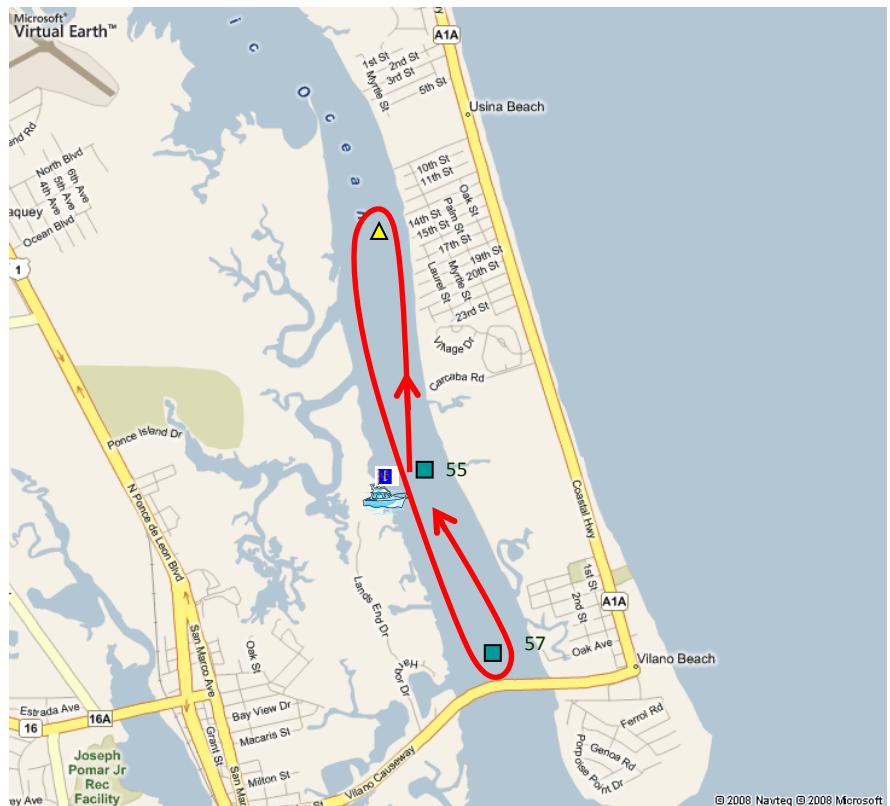
Short Course B Light Northerly Winds

North from Day Mark 55 to a buoy set off Boating Club Road, to Day Mark 57 & back to 55 (2.76 NM)

Cruising 1 Lap
Performance 2 Laps

Leave marks to port

NOTE: Committee boat & 55 are not marks of the course except the start and finish.



St Augustine Yacht Club

2018 Wednesday Night Race Courses (continued)

Long Course A Heavy Southerly Winds

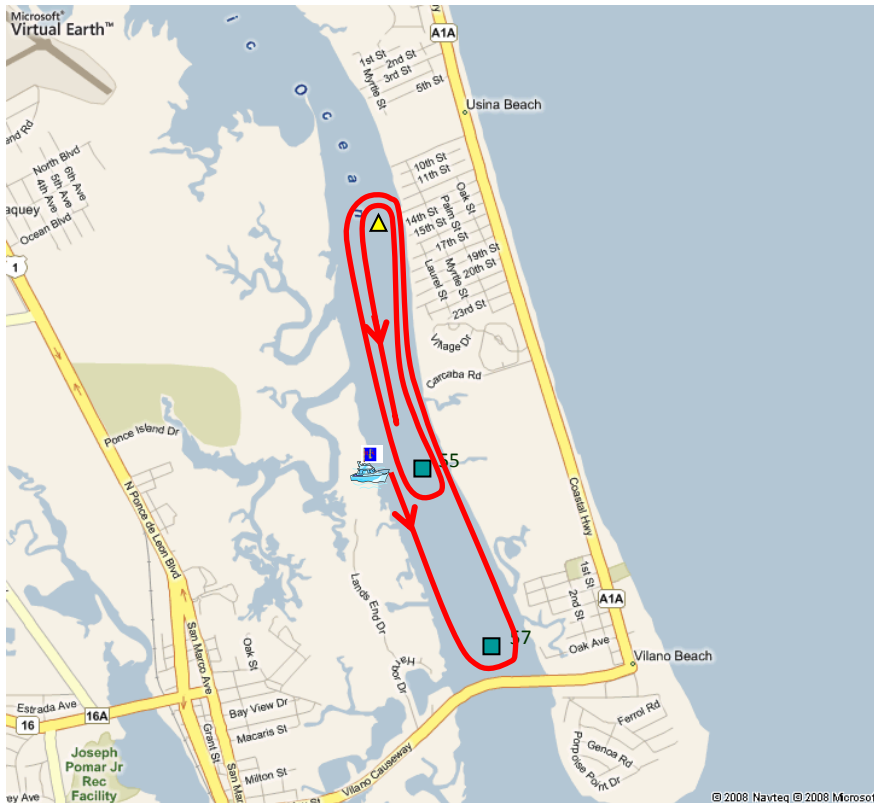
South from Day Mark 55 to Day Mark 57, to a buoy set off Boating Club Rd, to 55, back to BC Rd, to finish at 55.

Cruising 1 Lap + Extra Lap (4.56 NM)
Performance 2 Laps + Extra Lap (7.32 NM)

Leave marks to port

NOTE:

1. Committee boat & 55 are not marks of the course except the start and finish.
2. Extra Lap = 55 to BC Rd



Long Course B Heavy Northerly Winds

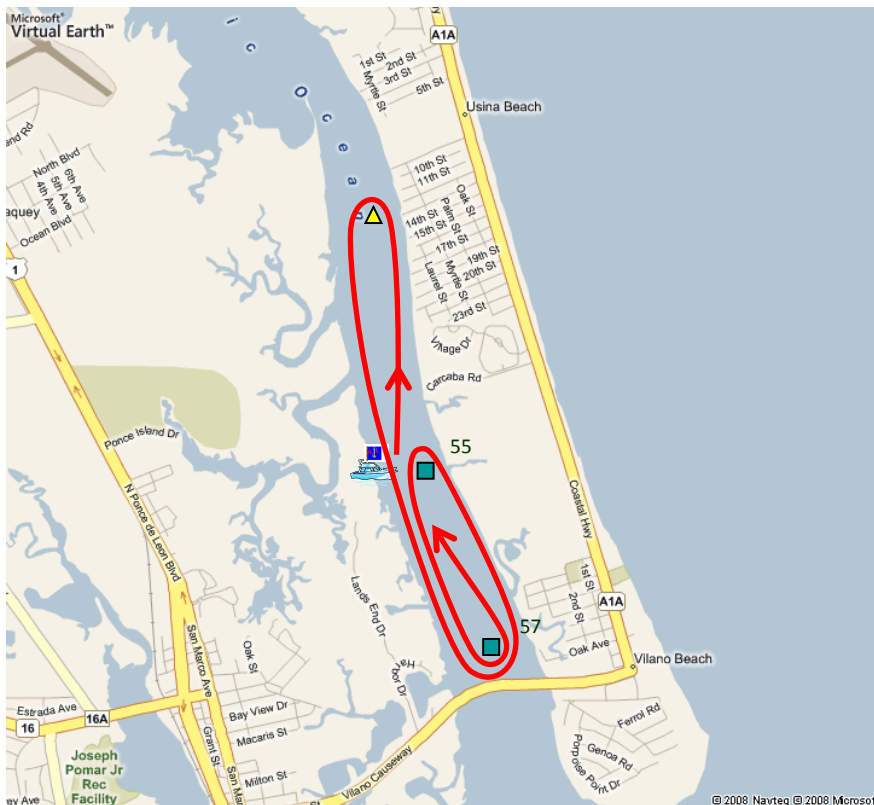
North from Day Mark 55 to a buoy set off Boating Club Road, to Day Mark 57 to 55, back to 57 and finish at 55.

Cruising 1 Lap + Extra Lap (3.72 NM)
Performance 2 Laps + Extra Lap (6.48 NM)

Leave marks to port

NOTE:

1. Committee boat & 55 are not marks of the course except the start and finish.
2. Extra Lap = 55 to 57



St Augustine Yacht Club 2018 Wednesday Night Race Courses (continued)

Triangle Course

Location of start/finish line and number of laps will be determined by race committee and announced before each race.



**ST AUGUSTINE YACHT CLUB
YACHT RACING ENTRY FORM**

RACE: _____ DATE: _____

YACHT NAME: _____ SAIL #: _____

YACHT MAKE/MODEL: _____ LENGTH: _____ COLOR: _____

PHRF RATING: _____ US SAILING MEMBER # _____

FLEET: _____ (CRUISER or PERFORMANCE)

OWNER'S NAME: _____ PHONE: _____

SKIPPER'S NAME: _____ PHONE: _____

CELL PHONE: _____ FAX: _____

EMAIL: _____

MAILING ADDRESS WITH ZIP: _____

EMERGENCY CONTACT: _____ PHONE: _____

VESSEL NORMALLY DOCKED AT: _____

The undersigned, for and on behalf of himself/herself, his/her guests, and the members of the crew of his/her yacht, hereby assumes all risk of accident and expressly agrees that the St. Augustine Yacht Club shall not be liable, under any circumstance, for any loss or injury to participants or others or the loss or damage to any yacht. The undersigned further agrees to indemnify and does hereby indemnify and hold the St. Augustine Yacht Club free and harmless under, from and against any and all losses, costs, damages, attorney's fees and liability of any kind or nature whatsoever growing out of or resulting from participation in any SAYC sponsored race.

SIGNED: _____ DATE: _____

Mail to: John Grannis
c/o St. Augustine Yacht Club
442 Ocean Vista Avenue
St. Augustine, Florida 32080