

Jax Navy Day Regatta
Saturday, October 21, 2017 – EFYCC Marina
Epping Forest Yacht and Country Club
1830 Epping Forest Drive Jacksonville, Fl. 32217

Notice of Race

1.0 RULES

The Regatta will be governed by *The Racing Rules of Sailing* (RSS), the rules of First Coast Sailing Association and this NOR.

These rules may be altered by the Sailing Instructions.

2.0 ELIGIBILITY

2.1 The race is open to all boats with a current PHRF certificate from First Coast Sailing Association.

(FCSA). www.sailjax.com

2.2 Boats that do not have a current PHRF rating assigned by FCSA may obtain a provisional rating (\$35.00 first-time annual fee) that will be submitted to FCSA for review and issuance of a Rating Certificate.

2.3 A boat participating in the Spinnaker or Non-Spinnaker Class shall have an identifying sail number on her mainsail.

2.4 Eligible boats may enter by completing a registration with Epping Forest Yacht and Country Club, which is the Organizing Authority.

2.5 Boats shall register in one of the following three classes: Spinnaker, Non-Spinnaker or Cruiser Class. Boats will be scored in the FCSA Annual Series based on the class designated on its entry form.

3.0 CLASSES

3.1 Performance Classes: The performance classes will consist of a Spinnaker Class and a Non-Spinnaker Class. These classes may be further subdivided at the Race Committee's discretion if there is a sufficient number of entries.

3.2 Cruiser Class: A Cruiser Class will be offered. Refer to PHRF Rules of FCSA definitions and rules to the Cruiser Class pertaining

3.3 A multihull Cruiser Class may also be formed provided there are at least three registrants. Refer to PHRF Rules of FCSA for rules pertaining to multihull cruisers.

4.0 SCHEDULE OF EVENTS

4.1 Friday, October 20: Complimentary docking at EFYCC the evening before the race.

4.2 Saturday, October 21: **9:00-10:00a.m. Complimentary Coffee and Pastries; 10:00a.m.-11:45a.m. Registration; 12:00p.m. Competitors Meeting; 12:55p.m. Warning Signal; 1:00p.m. Race Start.**

5.0 ENTRY FEE/ REGISTRATION

5.1 Entry fee is \$30.00 for EFYCC Members and \$35.00 for Non-Members. Payment may be in the form of cash, check or through the club membership point of sale system. Please make checks payable to Epping Forest Yacht and Country Club. If paying cash please bring the exact amount due if possible. Entry fee must be accompanied by an entry form (Standard Race Entry Form available at www.sailjax.com) during registration. If paying by check ahead of time, please include your registration form and mail to: Epping Forest Yacht and Country Club c/o Harbormaster 1830 Epping Forest Drive Jacksonville, Fl. 32217. Boats may always register between the hours of 10:00a.m. through 11:45a.m. on the day of the race.

6.0 SAILING INSTRUCTIONS

6.1 Sailing Instructions are contained in this document below. Copies will also be available at the registration table on the day of the race.

7.0 COURSE

7.1 Course will be a single PHRF Time on Distance race using government navigation marks and or inflatable markers.

8.0 SCORING THE RACE

8.1 Classes will be scored using the PHRF Time on Distance system.

8.2 The Low Point scoring system of Appendix A will apply.

8.3 Results of this race will be forwarded to the First Coast Sailing Association for inclusion in the Annual Series scoring.

9.0 RACE PRIZES

9.1 First, Second and Third place prizes will be awarded in each class.

10.0 INFORMATION

10.1 For additional information or questions concerning this Regatta please contact the EFYCC Harbormaster Keith Keller (904) 739-7150 or email kkeller@efyc.com.



Jax Navy Day Regatta

Saturday, October 21, 2017 – EFYCC Marina

Epping Forest Yacht and Country Club

1830 Epping Forest Drive Jacksonville, Fl. 32217

Sailing Instructions

1. RULES

1.1 The Regatta will be governed by *The Racing Rules of Sailing* (RRS) except as modified by the rules of the First Coast Sailing Association and these Sailing Instructions

1.2 Racing Rules A4 and A5 are changed by SI 12.3 as follows: A vessel starting later than ten minutes after her starting signal will be scored “did not start” (DNS) without a hearing. This changes Rules A4 and A5.

1.3 Racing Rules A4 and A5 of the RRS are changed by SI 14.1 as follows: “A boat failing to finish within 60 minutes in corrected time after first boat in her class will be scored “Did not finish” without a hearing”.

2. ENTRIES

2.1 Eligible boats are those who have officially entered by completing a registration form with EFYCC in advance or during the registration period as set forth in the Notice of Race.

2.2 Additional eligibility requirements and class definitions are defined in the Notice of Race Articles 2 and 3.

3. SAFETY

3.1 All Competitors are required to conform to the U. S. Coast Guard regulations and the RRS concerning personal floatation devices and other required equipment.

3.2 Boats shall not impede the passage of a vessel that can safely navigate only within a narrow channel or commercial fishing vessels while fishing or vessels with restricted ability to maneuver. Racing boats interfering with other vessels may be subject to protest by the Race Committee or contestants and possible disqualification.

3.3 Race Committee will monitor VHF channel 72.

3.4 Boats shall attempt to check in with the Race Committee by sailing past on the non-course side prior to their class Warning Signal.

3.5 Boats withdrawing from a race prior to finishing shall make every effort to ensure that the Race Committee is notified that they have withdrawn.

4. NOTICE TO COMPETITORS

4.1 Notice to competitors will be posted on the official notice location on the Mariner’s Deck window at EFYCC Marina and in packet form during the registration.

5. CHANGES IN THE SAILING INSTRUCTIONS

5.1 Any change in the Sailing Instructions will be posted and announced in accordance with SI 4.1 before 12:00p.m. on the day of the race.

5.2 Oral changes to the Sailing Instructions may be communicated to each boat while on the water and prior to her warning signal.

6. SIGNALS MADE ASHORE

6.1 Signals made ashore will be displayed on the club flag staff, next to the Harbormasters office.

6.2 Code Flag "AP", Answering Pennant, with two sounds means "The race is postponed. It is advised not to leave the Harbor area." The time of the warning signal will be posted on the Notice Window before the lowering of the "AP" flag with one sound.

7. RACE SCHEDULE

7.1 Saturday, October 21, 2017 one race.

7.2 Schedule of Events:

Registration: 10:00-11:45 am

Competitor's Meeting: 12:00 noon

Warning Signal: 12:55

8. CLASSES

8.1 Performance Class: The performance class will consist of Spinnaker Class and a Non-Spinnaker Class. These classes may be further subdivided at the Race Committee's discretion if there is a sufficient number of entries.

8.2 Cruiser Class: A Cruiser Class will be offered. Refer to PHRF Rules of FCSA definitions and rules pertaining to the Cruiser Class.

8.3 Class flags are listed on page 5 of the Sailing Instructions.

9. THE RACING AREA

9.1 The racing area shall be between the Buckman Bridge to south and the Fuller Warren Bridge to the north as depicted on NOA Chart 11492.

10. COURSES

10.1 The official race course will be announced at the Skippers Meeting at 12:00 noon the day of the race.

10.2 Course(s) will be as announced and posted alongside the Notice of Race on the outside downstairs window of the Captains Deck at the competitors meeting.

11. MARKS

11.1 Marks will be yellow and / or orange inflatable marks, stationary government marks or other marks as designated by the Race Committee.

11.2 One single race will be offered for each class. The course may be a combination of Navigation Marks on the river and marks set by the Race Committee.

12. START

12.1 The Starting Line will be a line between an orange flag flown on the Race Committee Boat and an inflatable mark set toward the left side of the course from the Committee Boat.

12.2 Boats whose warning signal has not been made shall keep clear of the starting area.

13. THE FINISH

13.1 The Finish Line will be between an orange flag flown on the RC Boat and an inflatable mark set to the left side relative to the final leg of the course.

13.2 The finish line will be described and detailed before the race at the RC and Skipper's meeting at 1200 hours.

14. TIME LIMIT

14.1 The time limit shall be 3 hours for each class.

15. PROTESTS

15.1 Protests shall be filed with RC. Protest time will end one hour after RC Boat docks after the racing.

15.2 Protest notices will be posted on the official notice location on the Mariner's Deck window at EFYCC Marina.

16. SCORING

16.1 Classes will be scored using PHRF Time on Distance.

16.2 The Low Point scoring system of RRS Appendix A will apply.

17. RESULTS

17.1 Results will be announced at Epping Forest Marina following the race. The results will also be posted on the FCSA website www.sailjax.com.

FURTHER INFO: Keith Keller, Harbor Master (904) 739 - 7150


Epping Forest Yacht and Country Club is proud to host the Navy Day Regatta for October 2017! This Regatta has formally been hosted by the Navy Jax Yacht Club at Naval Air Station Jacksonville. Here is a brief history about the Regatta. A group of NAS Jax Sailors founded the Navy Jacksonville Yacht Club June 14, 1956. Back then, the club was primarily utilized for sailing instruction and recreation, as well as local and interclub races on the St. Johns River. Since its inception, the Yacht Club has grown considerably. The club acquired a permanent clubhouse in the late '70s and has since made many renovations. Club members completed much of the construction themselves. "The club members have poured their hearts into this place," said Aviation Ordnance man 1st Class Rick Zaremba, the Yacht Club's Vice-Commodore. As the club has grown, so have many of its activities. The Armed Forces Day Regatta in May and the Navy Day Regatta in October are the two major races sponsored by the Yacht Club. They are open to all boats on the river. In keeping the tradition alive, Epping Forest is proud to accommodate and host this event. All the while saluting and recognizing the history and importance that the Regatta has served for the Navy, and the surrounding Sailing community as a whole!

The Mariner's Deck Bar upstairs will be open after the race offering cocktails. Cash or charge is accepted for non-members. The EFYCC Marina will be offering complimentary beer and wine, as well as hot hors d' oeuvres during the awards ceremony and finishing times for all attendees. Please come out and support the continuation of Sailing in the North East Florida region. Good Luck!

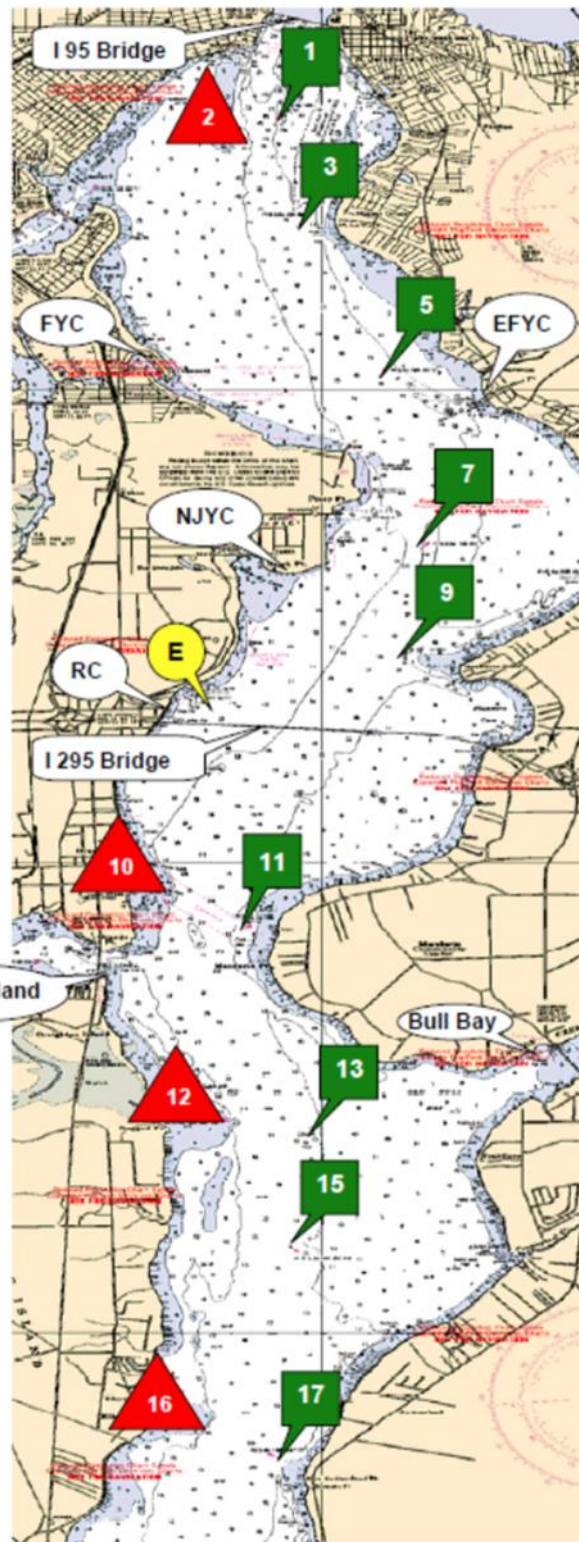


- 1 to 3 1.104 nm
- 1 to 5 2.787 nm
- 1 to 7 4.643 nm
- 3 to 5 1.703 nm
- 3 to 7 3.546 nm
- 5 to 7 1.863 nm
- 5 to 9 2.926 nm
- 7 to 9 1.095 nm
- 7 to E 2.240 nm
- 9 to E 1.486 nm

- 11 to 13 2.317 nm
- 11 to 15 3.400 nm
- 11 to 17 5.631 nm
- 13 to 15 1.109 nm
- 13 to 17 3.360 nm
- 15 to 17 2.252 nm



 * Marks 2, 10, 12, 16 are well placed. Do not sail out of the channel without local knowledge.



From 2009
USCG Light List

River Mark G1
N 30° 17.813
W 81° 40.411

River Mark R2
N 30° 17.628
W 81° 40.635

River Mark G3
N 30° 16.719
W 81° 40.218

River Mark G5
N 30° 15.142
W 81° 39.466

River Mark G7
N 30° 13.305
W 81° 39.077

River Mark G9
N 30° 12.216
W 81° 39.237

Race Mark "E"
N 30° 11.648
W 81° 40.822

River Mark R10
N 30° 09.513
W 81° 41.399

River Mark G11
N 30° 09.305
W 81° 40.794

River Mark R12
N 30° 07.240
W 81° 40.800

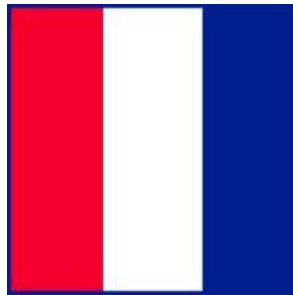
River Mark G13
N 30° 07.036
W 81° 40.224

River Mark G15
N 30° 05.926
W 81° 40.283

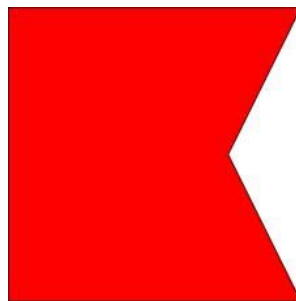
River Mark R16
N 30° 04.038
W 81° 41.254

River Mark G17
N 30° 03.671
W 81° 40.393

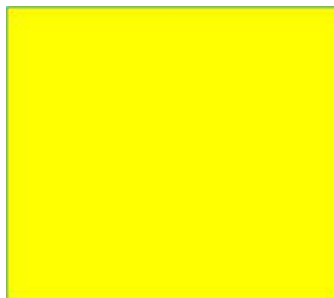
Class Signal Flags Description:



Spinnaker Class "T"



Non-Spinnaker Class "B"



Cruiser Class "Q"



EPPING-FOREST
YACHT & COUNTRY CLUB