



St. Augustine Yacht Club

Founded 1873

Notice of Race **Compass Rose Challenge** **Sunday October 15th**

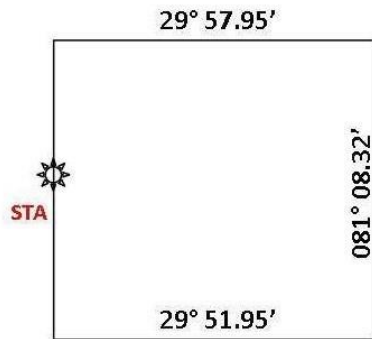
- 1. Rules** The St. Augustine Yacht Club (SAYC) is the Organizing Authority for the Compass Rose Challenge. The race shall be governed by The Racing Rules of Sailing 2013-2017 (RRS), and the PHRF rules of the FCSA (<http://www.sailjax.com>).
- 2. Eligibility** All seaworthy cruising sailboats that are not less than 22 feet in length. All boats shall have a PHRF rating issued by the First Coast Sailing Association. (See Sailjax.com for forms). All boats will compete in the cruising class sailing with their Non-spin rating. No spinnakers are allowed, boats will sail with jib, main, mizzen only. Each yacht must be equipped with a GPS.
- 3. Registration** Prior to racing each boat shall be registered and shall submit the proper fee. Boats may enter by registering on the SAYC website (www.staugustineyachtclub.com) or by mailing the entry form attached to the NOR to RCOS, St. Augustine Yacht Club, 442 Ocean Vista Ave., St. Augustine, Florida 32080. **There will be a Skipper's Meeting at 9.30am at SAYC**
- 4. Fees** Entry fee per boat is \$42.00 for non SAYC members and 32.00 for SAYC members. Entries placed on the SAYC website may make fee payment by PayPal. Otherwise Entry Fee checks made out to the St. Augustine Yacht Club should be sent to the St. Augustine Yacht Club, 442 Ocean Vista Ave., St. Augustine, Fl. 32080. SAYC members may also elect to charge the entry fee to their account.
- 5. Schedule**
11:30 Race committee will announce course and take check ins.
12:00 Start of race
- 6. Instructions** See attached sailing instructions.
- 7. Prizes** Trophies will be awarded for first, second and third. They will be presented at the Annual Sailing Awards Party, TBD.
- 8. After Race Award Party** Captains and crew are invited to the St Augustine Yacht Club for the After Race Party at 5pm. Sunday, October 15th



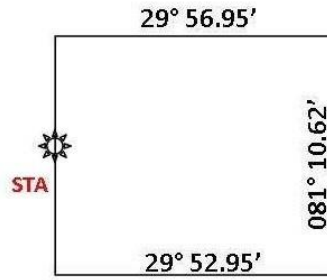
Sailing Instructions Compass Rose Challenge Sunday October 9th, 2016

- 1. Rules** The St. Augustine Yacht Club (SAYC) is the Organizing Authority for the Compass Rose Challenge. The race shall be governed by The Racing Rules of Sailing 2013-2017 (RRS), and the PHRF rules of the FCSA (<http://www.sailjax.com>).
- 2. Course** The course will be from the St. Augustine sea buoy to points on three sides of a square (otherwise called a box course), as shown in the diagrams below. Yachts must touch all sides of the square, and may do so at any point along each side, and in any order, before returning to the start/finish line. The choice of the size of the square to sail and hence the total minimum distance to sail, will be determined depending on wind conditions on the day. **The final course will be** announced by the Race Committee before the start at 11:30. Note that there are medium and short courses. Cruising boats will sail a minimum 16.9 NM on the medium course and 12.3 NM on the short course. The start line runs south from the STA buoy 300'.
- 3. The Start** The start line runs south from the STA buoy 300'. To start the race a yacht must not past east of STA and the line prior to the 12:00 start time, and she will pass within 300' of STA.
- 4. The Finish** Each yacht shall record its own finish time when after completing the course it is within 300 ft. west of STA and **STA bears 090° m from the helm**. Record the finish time using a time piece that is synchronized with the Naval Observatory Master Clock (phone 202-762-1401). Finish times shall be called or texted into the RCOS at (646) 530 0580
- 5. Radio communication** All sailors must check in with the committee boat by 11:50 am on VHF channel 72. The race committee will monitor channel 72 and can provide race information, including any changes to these Race Instructions. The RCS will communicate any course length changes on VHF channel 72 during the race.
- 6. Self-Steering** This race may be sailed with the assistance of self-steering gear, electric or wind (modifies RRS 52).
- 7. Time Limit** Modifying RRS 35, there will be a fixed time limit for the race. Yachts finishing after the time limit established here will be scored DNF. **The Race Time Limit is 16:30 on Sunday the day of the race**
- 8. Disclaimer of Liability** Sailing is an activity that has an inherent risk of damage and injury. Competitors in this series are participating entirely at their own risk. See RRS 4, Decision to Race. Completion and submission of a registration form for these races constitute an acceptance of an agreement to abide by the Racing Rules of Sailing, this Race Notice and the Sailing Instructions.

CRUISING CLASS - POSSIBLE COURSES



CRUISING
MEDIUM COURSE
16.9 NM



CRUISING
SHORT COURSE
11.3 NM

**ST AUGUSTINE YACHT CLUB
YACHT RACING ENTRY FORM**

RACE: Compass Rose Challenge

DATE: October 9, 2016

YACHT NAME: _____ **SAIL #:** _____

YACHT MAKE/MODEL: _____ **LENGTH:** _____ **COLOR:** _____

PHRF RATING: _____ **US SAILING MEMBER #** _____

FLEET: _____ **(CRUISING FLEET or PERFORMANCE FLEET)**

OWNER'S NAME: _____ **PHONE:** _____

SKIPPER'S NAME: _____ **PHONE:** _____

CELL PHONE: _____ **FAX:** _____

EMAIL: _____

MAILING ADDRESS WITH ZIP: _____

EMERGENCY CONTACT: _____ **PHONE:** _____

VESSEL NORMALLY DOCKED AT: _____

The undersigned, for and on behalf of himself/herself, his/her guests, and the members of the crew of his/her yacht, hereby assumes all risk of accident and expressly agrees that the St. Augustine Yacht Club shall not be liable, under any circumstance, for any loss or injury to participants or others or the loss or damage to any yacht. The undersigned further agrees to indemnify and does hereby indemnify and hold the St. Augustine Yacht Club free and harmless under, from and against any and all losses, costs, damages, attorney's fees and liability of any kind or nature whatsoever growing out of or resulting from participation in any SAYC sponsored race.

SIGNED: _____ **DATE:** _____

Mail to: St. Augustine Yacht Club
442 Ocean Vista Avenue
St. Augustine, Florida 32080