



Blue Max Race

NORTH FLORIDA CRUISING CLUB

SATURDAY, June 17, 2017

St. Johns River starting in the vicinity of Marker

11

NOTICE OF RACE AND SAILING INSTRUCTIONS

1.0 RULES

The race will be governed in order of precedence by this Notice of Race and Sailing Instructions; the rules of the First Coast Sailing Association (FCSA); and The Racing Rules of Sailing, 2017-2020 (RRS).

2.0 MANAGEMENT

This race will be under the management of the North Florida Cruising Club, which is also the organizing authority.

3.1 ELIGIBILITY

3.2 The race is open to all yachts with a valid PHRF certificate from the First Coast Sailing Association (FCSA - www.sailjax.com). Yachts that do not have a current PHRF rating assigned by the FCSA may obtain a provisional new rating (\$35.00 first-time annual fee) that will be submitted to FCSA for formal review.

3.3 A yacht participating in the Spinnaker or Non-Spinnaker Class shall have her sail number on the mainsails, spinnakers, and all headsails with an LP exceeding 130% of J. A yacht sailing in the Cruiser Class shall have an identifying sail number on her mainsail.

4.1 REGISTRATION and ENTRY FEE

4.2 The standard FCSA race entry form must be completed in full and filed with the Race Committee before the start of the race.

4.3 Participants are encouraged to register in advance by sending the completed form with the appropriate fee to: Brigitte Hoey, NFCC Race Captain, 1102 1st Street South, Unit C, Jacksonville Beach, FL 32250. Registration may also be completed on the day of the race and handed to the Race Committee on the water.

4.4 The entry fee is \$30.00 for NFCC members and \$35 for non-members (\$30 with US Sailing membership). Checks should be made payable to North Florida Cruising Club.

5.0 CLASSES

The fleet will be divided into three classes: Spinnaker, Non-Spinnaker, and Cruiser. Classes may be further divided into Divisions if the number of entries permit. A multihull and or one design class may also be created with at least three registrants per class.

6.0 SCHEDULE OF EVENTS :

Registration: If unable to mail in registration, register with Race committee till 11:45

Warning signal for first start: 11:55

Post-race activities and awards presentation will be held at the Amity Marina from 1600 to 1900.

Docking at the docks is free for the day, and please contact Amity for overnighing.

7.1 NOTICES TO COMPETITORS

7.2 Monitor VHF 72 before the race for any last minute changes.

8.1 THE COURSE

8.2 The course for spinnaker and performance classes will be approximately 12.69 NM; The course for cruiser class will be approximately 8.25 NM

Spinnaker/Performance Start between RC boat and ATON marker 11, **proceed to marker 18** (leave to port), then to finish between yellow marker and committee boat, finish at approximately N 30 06.00 W 81 39.00' (leave RC boat to starboard).

Cruisers Start between ATON Marker 11, **proceed to marker 17** (leave to port) then to finish between yellow marker and committee boat, finish at approximately N 30 06.00 W 81 39.00' (leave RC boat to starboard).

See attached charts.

9.1 THE START and FINISH

- 9.2** The start line will be between an orange flag on the RC boat and ATON marker 11.
- 9.3** Yachts shall check in with the race committee prior to the warning signal of the first start. Failure to check in will result in a DNC.
- 9.4** The race will be started in accordance with RRS 26 with the warning signal given five minutes before the starting signal. The warning signal for the second start will be made after the prior class has substantially cleared the line.
- 9.5** Class flags will be: Gold for the Spinnaker and Non-Spinnaker classes combined; Pink for the Cruiser class. The Cruiser class will start first.
- 9.6** The preparatory flag for all classes will be the "P" flag.
- 9.7** Individual and general recalls will be in accordance with RRS 29. In addition, the race committee will attempt to announce over VHF channel 72 the sail numbers of premature starters. If a general recall is signaled, the order of starts will not change; all subsequent starts will be delayed correspondingly.
- 9.8** A yacht failing to cross the starting line within 15 minutes of the final start signal may be scored DNS.
- 9.9** If a postponement is signaled by display of the "AP" flag, the warning signal for races not yet started will be made not more than 5 minutes after "AP" is lowered.
- 9.10** The finish line will be between an orange flag on the race committee boat and a yellow tetrahedron located at approximately N 30 06.00 W 81 39.00'
- 9.11** A standoff buoy attached to the race committee boat shall be considered part of the boat.
- 9.12** All times used in association with the race will be Eastern Daylight Saving Time (UTC minus 4 hours in 24 hour format). Race committee time will be synchronized with the US Naval Observatory Master Clock telephone voice announcer: 202-762-1401 or 202-762-1069. Each yacht should likewise coordinate his/her timepiece.

10.0 PENALTIES

The two-turns penalty will apply in accordance with RRS 44. Any yacht which exonerates herself from a minor foul in this manner shall notify the Race Committee of such action after finishing.

11.0 PROTESTS

All protests shall be submitted in writing to the Race Committee after the race no later than 15 minutes following a horn signal made upon arrival of the Race Committee boat at the dock. Notice of protest must also be given immediately after finishing by hail, and acknowledged by the Race Committee.

11.0 TROPHIES

1st, 2nd, and 3rd place trophies will be awarded in Spinnaker, Non-Spinnaker, and Cruiser classes.

12.0 POST-RACE

Results will be announced AND TROPHIES AWARDED after the race at the Amity Marina Clubhouse sometime between 1600 and 1800 . The results will later be posted on the FCSA website www.sailjax.com. Race results will also be announced at the NFCC General Meeting, Thursday, July 20, 7:30 PM, location TBA.

FURTHER INFO: Brigitte Hoey, NFCC Race Captain. e-mail: Brigitte.hoey@bhhsfnr.com or call/text 973-452-9417 (cell)

You are welcome and encouraged to tie up on the T-dock following the race for free. Registration fee will include Walking Tacos and 5 drink tickets per boat!

- 2014 USCG Light List
- SA Bushman**
N 30° 11.400
W 81° 40.038
- Red 10**
N 30° 08.613
W 81° 41.389
- Green 11**
N 30° 09.305
W 81° 40.794
- Red 2 CL Inlet**
N 30° 08.033
W 81° 41.684
- Red 12**
N 30° 07.240
W 81° 40.800
- Green 13**
N 30° 07.038
W 81° 40.224
- Green 15**
N 30° 06.828
W 81° 40.283
- Red 18**
N 30° 04.038
W 81° 41.264
- Green 17**
N 30° 03.871
W 81° 40.383
- Green 17A**
N 30° 02.467
W 81° 40.622
- Red 18**
N 30° 01.446
W 81° 40.561
- Green 19**
N 30° 01.335
W 81° 40.278
- Red 20**
N 29° 58.822
W 81° 38.128

Min Finish
N 30° 11.1
W 81° 38.7

Distance	nm	Mag
11 to MF	2.028	034
10 to MF	2.182	048
20x to MF	2.820	044

(2014 Magnetic Variation 6° 10' W)

Start Both Fleets

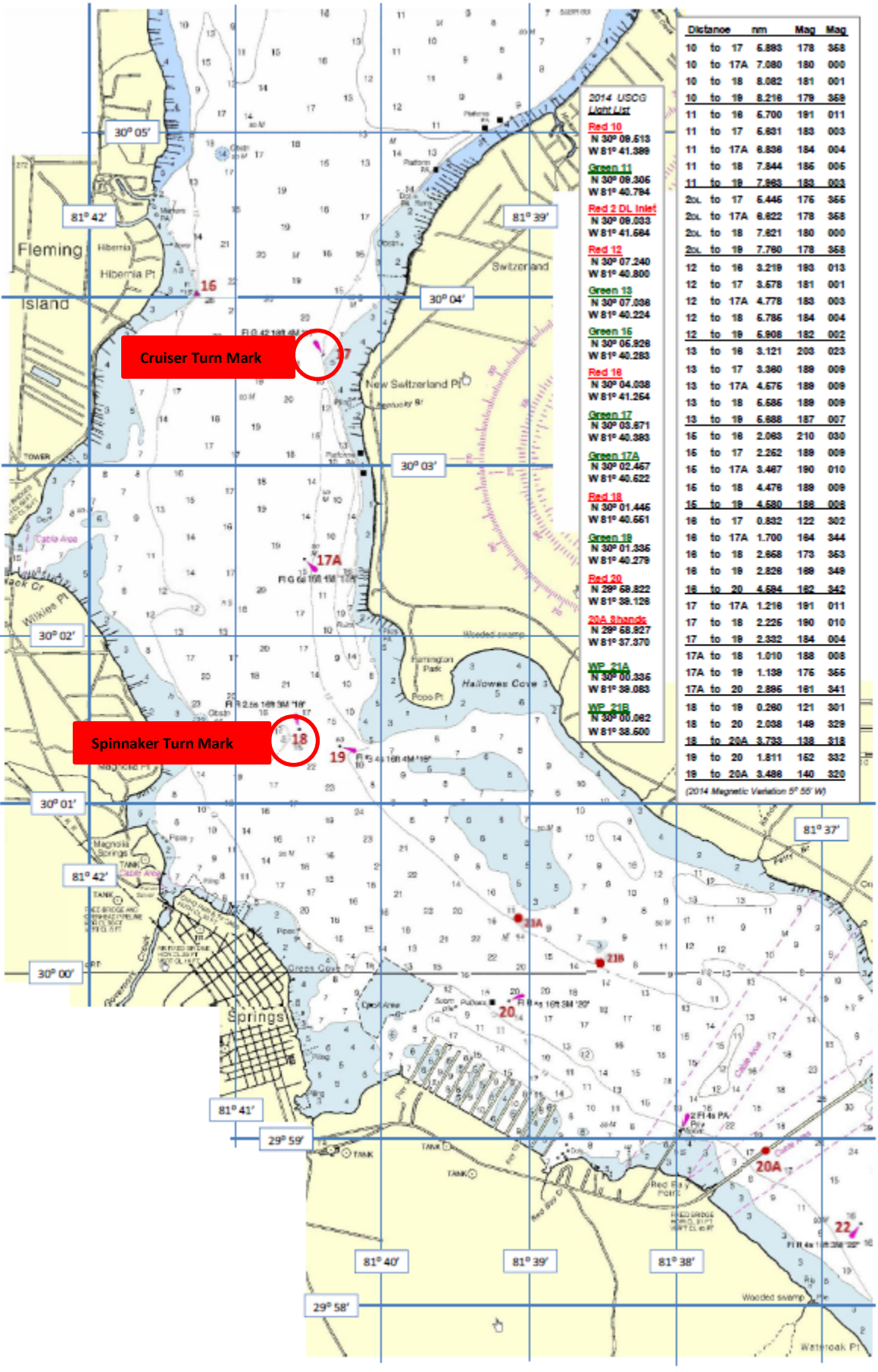
Finish Both Fleets

Distance	nm	Mag	Mag
8A to 10	2.222	218	038
8A to 11	2.180	204	024
8A to 20x	2.707	215	035
10 to 11	0.684	118	298
10 to 12	2.328	173	363
10 to 13	2.873	184	344
10 to 15	3.707	171	361
10 to 17	5.883	178	368
10 to 17A	7.080	180	000
10 to 18	8.082	181	001
10 to 19	8.218	178	368
11 to 12	2.060	188	006
11 to 13	2.317	174	364
11 to 15	3.400	178	368
11 to 18	5.270	181	011
11 to 17	5.831	183	003
11 to 17A	6.838	184	004
11 to 18	7.844	185	005
11 to 19	7.983	183	003
20x to 10	0.600	023	203
20x to 11	0.721	074	254
20x to 12	1.907	188	348
20x to 13	2.308	168	338
20x to 15	3.283	188	348
20x to 17	5.446	176	366
20x to 17A	6.822	178	368
20x to 18	7.821	180	000
20x to 19	7.780	178	368
12 to 13	0.638	118	298
12 to 15	1.385	187	347
12 to 18	3.218	183	013
12 to 17	3.678	181	001
12 to 17A	4.778	183	003
12 to 18	5.786	184	004
12 to 19	5.808	182	002
13 to 15	1.108	188	008
13 to 18	3.121	203	023
13 to 17	3.380	188	008
13 to 17A	4.675	188	008
13 to 18	5.686	188	008
13 to 19	5.888	187	007

(2014 Magnetic Variation 6° 10' W)

Distance	nm	Mag	Mag
15 to 16	2.083	210	030
15 to 17	2.262	188	008
15 to 17A	3.487	180	010
15 to 18	4.478	188	008
15 to 19	4.580	188	008
18 to 17	0.832	122	302
18 to 17A	1.700	184	344
18 to 18	2.868	173	363
18 to 19	2.826	188	348
18 to 20	4.684	182	342
17 to 17A	1.218	181	011
17 to 18	2.226	180	010
17 to 19	2.332	184	004

(2014 Magnetic Variation 6° 10' W)



Distance	nm	Mag	Mag
10 to 17	6.893	178	368
10 to 17A	7.080	180	000
10 to 18	8.082	181	001
10 to 18	8.218	178	368
11 to 18	6.700	181	011
11 to 17	6.831	183	003
11 to 17A	8.398	184	004
11 to 18	7.844	186	006
11 to 18	7.883	183	003
20L to 17	6.446	176	366
20L to 17A	8.822	178	368
20L to 18	7.821	180	000
20L to 18	7.780	178	368
12 to 18	3.218	183	013
12 to 17	3.678	181	001
12 to 17A	4.778	183	003
12 to 18	6.786	184	004
12 to 18	6.808	182	002
13 to 18	3.121	203	023
13 to 17	3.380	188	008
13 to 17A	4.676	188	008
13 to 18	6.686	188	008
13 to 18	6.688	187	007
15 to 18	2.083	210	030
15 to 17	2.262	188	008
15 to 17A	3.487	190	010
15 to 18	4.478	188	008
15 to 18	4.680	188	008
18 to 17	0.832	122	302
18 to 17A	1.700	184	344
18 to 18	2.868	173	363
18 to 18	2.828	188	348
18 to 20	4.684	182	342
17 to 17A	1.218	181	011
17 to 18	2.226	180	010
17 to 18	2.332	184	004
17A to 18	1.010	188	008
17A to 18	1.138	176	366
17A to 20	2.896	181	341
18 to 18	0.280	121	301
18 to 20	2.038	148	328
18 to 20A	3.793	138	318
19 to 20	1.811	162	332
19 to 20A	3.488	140	320

(2014 Magnetic Variation 5° 55' W)