

June 3rd
2017
Jessie Ball Regatta



EPPING FOREST
YACHT & COUNTRY CLUB





Jessie Dew Ball

Ball duPont had met and befriended Alfred I DuPont when she was 14 and he 34, and they maintained a correspondence thereafter. After the January 1920 death of his second wife, they entered a courtship which resulted in marriage on January 22, 1921. The couple made their home in the Nemours Mansion and Gardens in Wilmington, Delaware. Retired from teaching, Ball duPont oversaw maintenance of the family estate, took over raising her husband's daughter, Denise, and began to assist duPont in his business.

In 1923, duPont hired Edward Ball, one of Ball duPont's four siblings to survive to adulthood. Ball relocated to Delaware to become manager of the Clean Food Products Company and additionally to advise duPont and manage the estate fortune. The arrival of her brother freed Ball duPont from some of her business concerns so that she could dedicate more time to her charities.

In 1927, the family relocated to Florida, taking up residence in their newly built 58 acres (230,000 m²) estate on the St. John's River, Epping Forest, which was named after the home of Mary Ball Washington, the mother of George Washington, who was Jessie's distant relative. duPont established his main business industry in Jacksonville, with most of his \$34 million assets being transferred to his newly formed Nemours Securities, Inc. Ball also moved to

Florida, and duPont and Ball expanded their business interests in the area, acquiring substantial real estate and buying into the Florida National Bank. In 1935, Ball duPont became the director of that bank. Meanwhile, Ball duPont also undertook the preservation of Stratford Hall Plantation, where Confederate General Robert E. Lee had been born.¹ She also renovated and modernized the Lee family residence Ditchley, near Kilmarnock Virginia. In 1940, she purchased Hurstville and had the house restored as a residence for her sisters.

On April 29, 1935, Alfred duPont died, leaving Ball duPont as his primary beneficiary. He also established a substantial trust which Ball duPont administered, along with her brother and duPont's son-in-law, Elbert Dent. She served as president of two of the organizations set up by the trust, the Nemours Foundation and the Alfred I. duPont Testamentary Trust. She also sat on the boards at the Alfred I. Institute for Crippled Children at Nemours and the St. Joe Paper Company in Jacksonville, serving as Chairman at the latter.



Jessie Ball Regatta
Women's Series Race #2 of 4
Saturday, June 3, 2017 – EFYCC
Notice of Race

1.0 RULES

The Regatta will be governed by *The Racing Rules of Sailing* (RSS), the rules of First Coast Sailing Association and this NOR.

These rules may be altered by the Sailing Instructions.

2.0 ELIGIBILITY

2.1 The race is open to all boats with a current PHRF certificate from First Coast Sailing Association

(FCSA). www.sailjax.com

2.2 Boats that do not have a current PHRF rating assigned by FCSA may obtain a provisional rating (\$35.00 first-time annual fee) that will be submitted to FCSA for review and issuance of a Rating Certificate. Boats not having a valid rating may obtain an uncontested temporary PHRF rating on a one-time basis. You must have a valid PHRF rating to be scored for year-end awards.

2.3 Participating boats shall have an identifying sail number on her mainsail and headsails with and LP not exceeding 130%.

2.4 Eligible boats may enter by completing a registration with Epping Forest Yacht and Country Club, which is the Organizing Authority.

2.5 All female crews are encouraged to register. Competitor's requirements for mixed crew eligibility sailings are: at least 50% of those on board shall be female and the boat must be helmed by a female from the preparatory signal until finish.

3.0 CLASSES

3.1 **Performance Class:** Open to Spinnaker and Non-Spinnaker performance boats with all-female crews or a female crew with no more than one male defined as the owner, or the owner's representative (such as defined by insurance) but he shall not assist the crew in any way while racing.

3.2 **Cruiser Class:** (As defined by FCSA PHRF Rules) Sailing a Cruiser Class boat with mixed crew with 50% or more of those on board being female and the boat must be helmed by a female from the start until the finish while racing.

3.3 Performance boats are encouraged to participate in the all-female Performance Class. However, if a performance boat chooses to enter in the Cruiser Class with a mixed crew, the boat's rating shall be adjusted in accordance with FCSA PHRF Rules with exception that head foils will be permitted with a -6 seconds per nautical mile penalty. In addition, any performance sails such as laminated sails, molded sails, woven/laminated cruising Mylar sails, and radial-cut racing woven polyester sails, etc. shall be adjusted -6 seconds per nautical mile for any headsail and -6 seconds per mile for any mainsail.

3.4 All boats will be rated in accordance with their declared Spinnaker or Non-Spinnaker rating as registered for a given race. Boats may change their Spinnaker or Non-Spinnaker registration in other races of the series. Corrected results will be calculated based on the declared rating (Spinnaker or Non-Spinnaker) for each boat as registered for each race of the Series.

3.5 Results that are submitted to FCSA to go towards year end trophies must be submitted for either Performance Class or the Cruiser Class.

4.0 SCHEDULE OF EVENTS

4.1 Friday, June 2nd: Complimentary docking at EFYCC the evening before the race. 4.2 Saturday, June 3rd: **9:00-10:00a.m. Complimentary Coffee and Pastries; 10:00a.m.-11:45a.m. Registration; 12:00p.m. Competitors Meeting; 12:55p.m. Warning Signal; 1:00p.m. Race Start. Post-race awards ceremony will have complimentary beer and hors d' oeuvres.**

5.0 ENTRY FEE/ REGISTRATION

5.1 Entry fee is \$30.00 for EFYCC Members and \$35.00 for Non-Members. Payment may be in the form of cash, check or through the club membership point of sale system. Please make checks payable to Epping Forest Yacht and Country Club. If paying cash please bring the exact amount due if possible. Entry fee must be accompanied by an entry form (Standard Race Entry Form available at www.sailjax.com) during registration. If paying by check ahead of time, please include your registration form and mail to: Epping Forest Yacht and Country Club c/o Harbormaster 1830 Epping Forest Drive Jacksonville, Fl. 32217. Boats may always register between the hours of 10:00a.m. through 11:45a.m. on the day of the race.

6.0 SAILING INSTRUCTIONS

6.1 Sailing Instructions will be available to be downloaded from the First Coast Sailing Association website www.sailjax.com. Copies will also be available at the registration table on the day of the race.

7.0 COURSE

7.1 Course will be a single PHRF Time on Distance race using government navigation marks and or inflatable markers. The course will be described and outlined at the skipper's meeting prior to the race.

8.0 SCORING THE RACE

8.1 Classes will be scored using the PHRF Time on Distance system.

8.2 The Low Point scoring system of Appendix A will apply.

8.3 Results of this race will be forwarded to the First Coast Sailing Association for inclusion in the Annual Series scoring.

9.0 RACE PRIZES

9.1 Prizes will be awarded in each class based on attendance in the first, second and third place positions.

10.0 INFORMATION

10.1 For additional information or questions concerning this Regatta please contact the EFYCC Harbormaster Keith Keller (904) 739-7150 or email kkeller@efyc.com.





Jessie Ball Regatta

Women's Series #2 of 4

Saturday, June 3th, 2017 – EFYCC Marina

Sailing Instructions

1. RULES

1.1 The Regatta will be governed by *The Racing Rules of Sailing* (RRS) except as modified by the rules of the First Coast Sailing Association and these Sailing Instructions

1.2 Racing Rules A4 and A5 are changed by SI 12.3 as follows: "A boat starting later than ten minutes after her starting signal will be scored "did not start" without a hearing".

1.3 Racing Rules A4 and A5 of the RRS are changed by SI 14.1 as follows: "A boat failing to finish within 60 minutes in corrected time after first boat in her class will be scored "Did not finish" without a hearing".

2. ENTRIES

2.1 Eligible boats are those who have officially entered by completing a registration form with EFYCC in advance or during the registration period as set forth in the Notice of Race.

2.2 Additional eligibility requirements and class definitions are defined in the Notice of Race Articles 2 and 3.

3. SAFETY

3.1 All Competitors are required to conform to the U. S. Coast Guard regulations and the RRS concerning personal floatation devices and other required equipment.

3.2 Boats shall not impede the passage of a vessel that can safely navigate only within a narrow channel or commercial fishing vessels while fishing or vessels with restricted ability to maneuver. Racing boats interfering with other vessels may be subject to protest by the Race Committee or contestants and possible disqualification.

3.3 Race Committee will monitor VHF channel 72.

3.4 Boats shall attempt to check in with the Race Committee by sailing past on the non-course side prior to their class Warning Signal.

3.5 Boats withdrawing from a race prior to finishing shall make every effort to ensure that the Race Committee is notified that they have withdrawn.

4. NOTICE TO COMPETITORS

4.1 Notice to competitors will be posted on the official notice location on the Mariner's Deck window at EFYCC Marina. Or, given out in packets at the registration table prior to the Captain's meeting.

5. CHANGES IN THE SAILING INSTRUCTIONS

5.1 Any change in the Sailing Instructions will be posted in accordance with SI 4.1 before 12:00p.m. on the day of the race.

5.2 Oral changes to the Sailing Instructions may be communicated to each boat while on the water and prior to her warning signal.

6. SIGNALS MADE ASHORE

6.1 Signals made ashore will be displayed on the club flag staff, next to the Harbormasters office.

6.2 Code Flag "AP", Answering Pennant, with two sounds means "The race is postponed. It is advised not to leave the Harbor area." The time of the warning signal will be posted on the Notice Window before the lowering of the "AP" flag with one sound.

7. RACE SCHEDULE

7.1 Saturday, June 3rd, one race.

7.2 Schedule of Events: **Registration:** 10:00-11:45 am **Competitor's Meeting:** 12:00 noon **Warning Signal** 12:55 **Start** 1:00pm8.

CLASSES

8.1 **Performance Class:** Open to Spinnaker and Non-Spinnaker performance boats with all-female crews or a female crew with no more than one male defined as the owner, or the owner's representative (such as defined by insurance) but he shall not assist the crew in any way while racing.

8.2 **Cruiser Class:** (As defined by FCSA PHRF Rules) Sailing a Cruiser Class boat with mixed crew with 50% or more of those on board being female and the boat must be helmed by a female from the start until the finish while racing.

8.3 Performance boats are encouraged to participate in the all-female Performance Class. However, if a performance boat chooses to enter in the Cruiser Class with a mixed crew, the boat's rating shall be adjusted in accordance with FCSA PHRF Rules with exception that head foils will be permitted with a -6 seconds per nautical mile penalty. In addition, any performance sails such as laminated sails, molded sails, woven/laminated cruising Mylar sails, and radial-cut racing woven polyester sails, etc. shall be adjusted -6 seconds per nautical mile for any headsail and -6 seconds per mile for any mainsail.

8.4 All boats will be rated in accordance with their declared Spinnaker or Non-Spinnaker rating as registered for a given race. Boats may change their Spinnaker or Non-Spinnaker registration in other races of the series. Corrected results will be calculated based on the declared rating (Spinnaker or Non-Spinnaker) for each boat as registered for each race of the Series.

8.5 Results that are submitted to FCSA to go towards year end trophies must be submitted for either Performance Class or the Cruiser Class.

8.6 Boats will be scored in the FCSA Annual Series based on the class designated on its entry form.

8.7 Class flags are listed on page 5 of the Sailing Instructions.

9. THE RACING AREA

9.1 The racing area shall be between the Buckman Bridge to south and the Fuller Warren Bridge to the north as depicted on NOA Chart 11492.

10. COURSES

10.1 The official race course will be announced at the Skippers Meeting at 12:00 noon the day of the race.

10.2 Course(s) will be as announced and posted alongside the Notice of Race on the outside downstairs window of the Captains Deck at the competitors meeting.

11. MARKS

11.1 Marks will be yellow and / or orange inflatable marks, stationary government marks or other marks as designated by the Race Committee.

11.2 One single race will be offered for each class. The course may be a combination of Navigation Marks on the river and marks set by the Race Committee.

12. START

12.1 The Starting Line will be a line between an orange flag flown on the Race Committee Boat and an inflatable mark set toward the left side of the course from the Committee Boat.

12.2 Boats whose warning signal has not been made shall keep clear of the starting area.

12.3 A boat starting later than ten minutes after her starting signal will be scored "Did Not Start" without hearing. This changes Rules A4 and A5.

13. THE FINISH

13.1 The Finish Line will be between an orange flag flown on the RC Boat and an inflatable mark set to the left side relative to the final leg of the course.

14. TIME LIMIT

14.1 The time limit shall be 3 hours for each class. A boat failing to finish within 60 minutes in corrected time after the first boat in her class will be scored "Did Not Finish" without a hearing. This changes RRS Rule 35 and Rule A4.1.

15. PROTESTS

15.1 Protests shall be filed with RC. Protest time will end one hour after RC Boat docks after the racing.

15.2 Protest notices will be posted on the official notice location on the Mariner's Deck window at EFYCC Marina.

16. SCORING

16.1 Classes will be scored using PHRF Time on Distance.

16.2 The Low Point scoring system of RRS Appendix A will apply.

17. RESULTS

17.1 Results will be announced at Epping Forest Marina following the race. The results will also be posted on the FCSA website www.sailjax.com.

FURTHER INFO: Keith Keller, Harbor Master (904) 739 - 7150

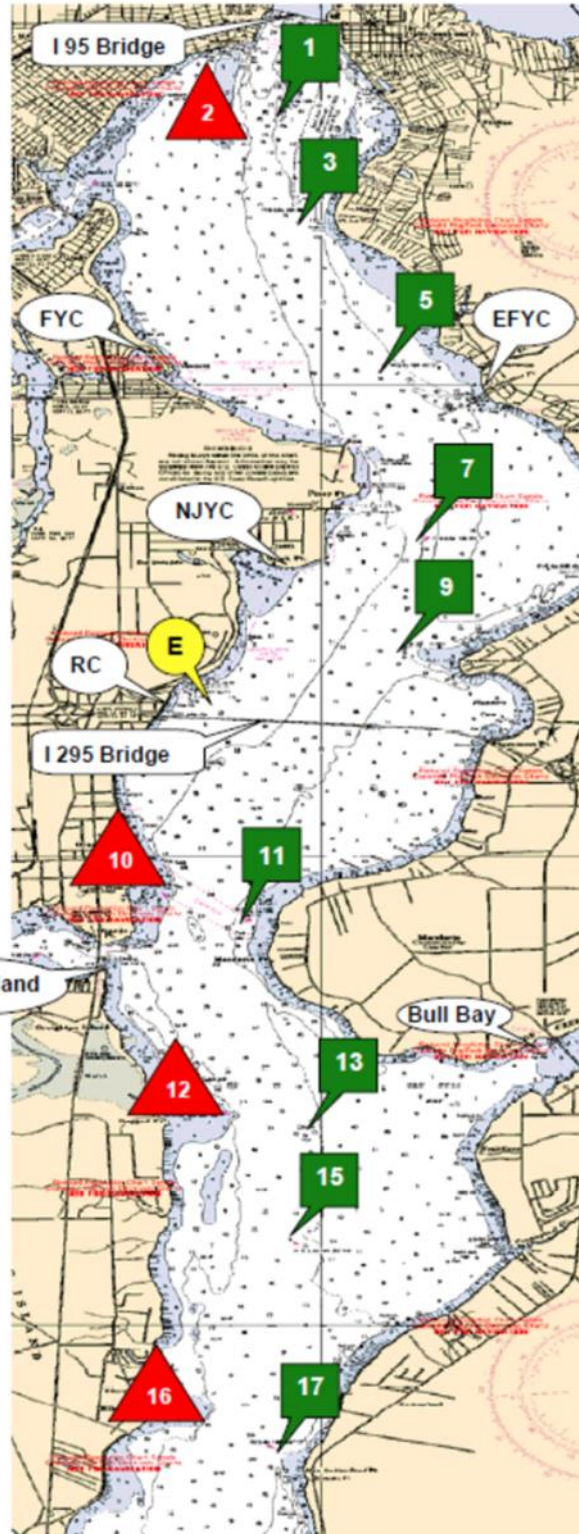


- 1 to 3 1.104 nm
- 1 to 5 2.787 nm
- 1 to 7 4.643 nm
- 3 to 5 1.703 nm
- 3 to 7 3.546 nm
- 5 to 7 1.863 nm
- 5 to 9 2.926 nm
- 7 to 9 1.095 nm
- 7 to E 2.240 nm
- 9 to E 1.486 nm

- 11 to 13 2.317 nm
- 11 to 15 3.400 nm
- 11 to 17 5.631 nm
- 13 to 15 1.109 nm
- 13 to 17 3.360 nm
- 15 to 17 2.252 nm



* Marks 2, 10, 12, 16 are well placed. Do not sail out of the channel without local knowledge.



From 2009
USCG Light List

River Mark G1
N 30° 17.813
W 81° 40.411

River Mark R2
N 30° 17.628
W 81° 40.635

River Mark G3
N 30° 16.719
W 81° 40.218

River Mark G5
N 30° 15.142
W 81° 39.466

River Mark G7
N 30° 13.305
W 81° 39.077

River Mark G9
N 30° 12.216
W 81° 39.237

Race Mark "E"
N 30° 11.648
W 81° 40.822

River Mark R10
N 30° 09.513
W 81° 41.399

River Mark G11
N 30° 09.305
W 81° 40.794

River Mark R12
N 30° 07.240
W 81° 40.800

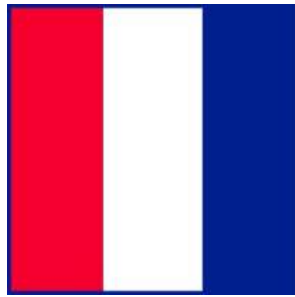
River Mark G13
N 30° 07.036
W 81° 40.224

River Mark G15
N 30° 05.926
W 81° 40.283

River Mark R16
N 30° 04.038
W 81° 41.254

River Mark G17
N 30° 03.671
W 81° 40.393

Class Signal Flags Description:



Performance All Female Class "T"



Cruiser Class "Q"





2017 Women's Sailing Series A Four-Race Women's Series on the St. Johns River

Race #1: WAVE Race

Sunday, April 9 | The Florida Yacht Club | 5210 Yacht Club Road | Jacksonville, FL 32210

Race #2: Jessie Ball Race

Saturday, June 3 | Epping Forest Yacht & Country Club | 1830 Epping Forest Drive | Jacksonville, FL 32217

Race #3: Hands on the Helm Race

Saturday, September 23 | North Florida Cruising Club | PO Box 24268 | Jacksonville, FL 32241

Race #4: Women on Water Race

Saturday, November 4 | The Rudder Club of Jacksonville | 8533 Malaga Avenue | Jacksonville, FL 32244

NOTICE OF RACE

1.0 RULES

- 1.1 The Women's Sailing Series will be governed by *The Racing Rules of Sailing* (RSS) and First Coast Sailing Association (FCSA).
- 1.2 This NOR applies for all races in the FCSA Women's Series for the year 2017.

2.0 ELIGIBILITY AND ENTRY

- 2.1 **All-Female Crew:** All-female crews are encouraged to compete. All-female crews shall have no more than one male on board who may be the Owner or designee (such as may be required by insurance) but who shall not assist the crew in any way while Racing.
- 2.2 **Mixed Crew:** Competitor's requirements for mixed crew eligibility are: at least 50% of those aboard shall be female and the boat must be helmed by a female while Racing.
- 2.3 All boats must have a valid PHRF rating from FCSA. Boats not having a valid rating may obtain an uncontested temporary PHRF rating on a one-time basis, assigned by the host Club Handicapper in accordance with FCSA Rules.
- 2.4 Participating boats shall have their sail number on the mainsail and headsails with an LP exceeding 130%.
- 2.5 Eligible boats may enter by completing registration with the host Club, which is the organizing authority for that race.
- 2.6 Two classes will be offered. A boat may change classes in the individual races of the series; however the corrected results in one class will not apply to the other in calculating overall series results.

3.0 CLASSES

- 3.1 **All-Female Performance Class:** Open to Spinnaker and Non-Spinnaker performance boats with all-female crews as defined in 2.1. Boats will be rated in accordance with their declared Spinnaker or Non-Spinnaker rating as registered for a given race. Boats may change their Spinnaker or Non-Spinnaker registration in other races of the series. Corrected results will be calculated based on the declared rating (Spinnaker or Non-Spinnaker) for each boat as registered for each race of the Series.
- 3.2 **Cruiser Class (as defined by FCSA Rules):** Sailing with All-Female Crew as defined in 2.1 or Mixed Crew as defined in 2.2. Performance boats are encouraged to participate in the All-Female Performance Class. However, if a Performance boat is entered with a Mixed Crew, the boat's rating shall be adjusted in accordance with FCSA PHRF Rules with exception that headfoils will be permitted with a -6 second per nautical mile penalty. Any performance sails such as laminated sails, molded sails, woven/laminated cruising Mylar sails, and radial-cut racing woven polyester sails, etc. shall be adjusted -6 seconds per nautical mile for any headsail and -6 seconds



per mile for any mainsail. Cruiser Class boats will be rated in accordance with their declared Spinnaker or Non-Spinnaker rating as registered for a given race. Boats may change their Spinnaker or Non-Spinnaker registration in other races of the series. Corrected results will be calculated based on declared rating (Spinnaker or Non-Spinnaker) for each boat as registered for each race of the Series.

4.0 SCHEDULE OF EVENTS

- 4.1 Check with the host club for availability of docking the night prior to the race and the day of the race.
- 4.2 **Race Day: 10:00-11:45 a.m. Registration; 12:00 Competitor's Meeting; 12:55 p.m. Warning Signal**

5.0 ENTRY FEE/REGISTRATION

- 5.1 Entry fee shall be posted by the host club prior to each race. Entry Fee shall be accompanied by an entry form (Standard Race Entry Form available at <http://www.sailjax.com>.) Boats may also register at the host club between the hours of 10:00 thru 11:45 a.m. on the day of the race.

6.0 SAILING INSTRUCTIONS

- 6.1 Sailing Instructions will be available to be downloaded from the host club website or the First Coast Sailing Association website www.sailjax.com. Copies will also be available at the host club on the day of the race.

7.0 COURSE

- 7.1 Course will be a single distance race using government navigation marks and/or inflatable marks.

8.0 SCORING THE RACE

- 8.1 Classes will be scored using PHRF Time on Distance.
- 8.2 The Low Point scoring system of Appendix A will apply.
- 8.3 Each boat starting and finishing the race, and not thereafter retiring or being disqualified, will be scored points equal to her corrected finishing place in class.
- 8.4 Results of this race will be forwarded to the First Coast Sailing Association for inclusion in the computation for Series scoring.

9.0 RACE PRIZES

- 9.1 First, second and third place prizes will be awarded in classes with five or more boats. Fewer prizes may be awarded in classes with fewer than five boats.

10.0 INFORMATION

Race #1: The Florida Yacht Club
5210 Yacht Club Road
Jacksonville, FL 32210
(904) 387-1653
<http://www.thefloridayachtclub.org>

Race #3: North Florida Cruising Club
PO Box 24268
Jacksonville, FL 32241
<http://www.nfcssail.com>

Race #2: Epping Forest Yacht & Country Club
1830 Epping Forest Drive
Jacksonville, FL 32217
(904) 739-7200
<https://www.efyc.com>

Race #4: The Rudder Club
8533 Malaga Avenue
Jacksonville, FL 32244
(904) 264-4094
<http://www.rudderclub.com>



2017 Women's Sailing Series A Four-Race Women's Series on the St. Johns River

Race #1: WAVE Race

Sunday, April 9 | The Florida Yacht Club | 5210 Yacht Club Road | Jacksonville, FL 32210

Race #2: Jessie Ball Race

Saturday, June 3 | Epping Forest Yacht & Country Club | 1830 Epping Forest Drive | Jacksonville, FL 32217

Race #3: Hands on the Helm Race

Saturday, September 23 | North Florida Cruising Club | PO Box 24268 | Jacksonville, FL 32241

Race #4: Women on Water Race

Saturday, November 4 | The Rudder Club of Jacksonville | 8533 Malaga Avenue | Jacksonville, FL 32244

SAILING INSTRUCTIONS

1. RULES

- 1.1 The regatta will be governed by *The Racing Rules of Sailing* (RRS) except as modified by the rules of the First Coast Sailing Association (FCSA) and Notice of Race Articles 2 and 3.
- 1.2 Racing Rules 35, A4, and A5 of the RRS are changed by SI 14.1 as follows: "A boat failing to finish within 60 minutes in corrected time after the first boat in her class will be scored 'Did Not Finish' without a hearing".

2. ENTRIES

- 2.1 Eligible boats are those who have officially entered by completing a registration form with the Host Club in advance or during the registration period as set forth in the Notice of Race.
- 2.2 Additional eligibility requirements and class definitions are defined in the Notice of Race Articles 2 and 3.

3. SAFETY

- 3.1 All competitors are required to conform to the U.S. Coast Guard regulations and the RRS concerning personal flotation devices and other required equipment.
- 3.2 Boats shall not impede the passage of a vessel

that can safely navigate only within a narrow channel or commercial fishing vessels while fishing or vessels with restricted ability to maneuver. Racing boats interfering with other vessels may be subject to protest by the Race Committee or contestants and possible disqualification.

- 3.3 Race Committee will monitor VHF Channel 78.
- 3.4 Boats shall attempt to check in with the Race Committee by sailing past on the non-course side prior to their class Warning Signal.
- 3.5 Boats withdrawing from a race prior to finishing shall make every effort to ensure that Race Committee is notified that they have withdrawn.

4. NOTICES TO COMPETITORS

- 4.1 Notices to competitors will be posted on the official notice board located on the premises of the Host Club.

5. CHANGES IN THE SAILING INSTRUCTIONS

- 5.1 Any change in the Sailing Instructions will be posted in accordance with SI 4.1 before 12:00 p.m. on the day of the race.
- 5.2 Oral changes to the Sailing Instructions may be communicated to each boat while on the water



and prior to her warning signal.

6. SIGNALS MADE ASHORE



- 6.1 Signals made ashore will be displayed on the premises of the Host Club.
- 6.2 Code Flag "AP", Answering Pennant, displayed ashore with two sound signals (one when lowered) means "The race is postponed: do not leave the dock." The warning signal will be made not less than 45 minutes after AP is lowered.

7. RACE SCHEDULE

- 7.1 Sunday, April 9, Race #1
Saturday, June 3, Race #2
Saturday, September 23, Race #3
Saturday, November 4, Race #4
- 7.2 Schedule of Events:
Registration: 10:00-11:45 am
Competitors' Meeting: 12:00 noon
Warning Signal: 12:55 pm

8. CLASS FLAGS

- 8.1 Class flags will be the International Numeral Pennants as depicted in the RRS.

Class	Pennant	
All Female Performance Class	P1	
Cruiser Class	P2	

9. RACING AREA

- 9.1 The racing area will be in the St. Johns River between the Buckman Bridge to the south and the Fuller Warren Bridge to the north as depicted on NOAA Chart 11492.

10. THE COURSE

- 10.1 Race course will be displayed from a course board on the Race Committee boat.

- 10.2 A single race using river navigation marks and inflatable marks will be displayed using the designation of the River Marks as depicted in Attachment A, and the letter designation for Mark "W", Mark "L" and Marks "A" through "E" as described in SI 11.1 and 11.2.

11. MARKS

- 11.1 Marks may be government navigation marks as depicted on NOAA Chart 11492 (as corrected by Notices to Mariners), yellow inflatable Marks "A", "B", "C", "D" or "E" as shown in Attachment A or inflatable Mark "W" or "L" described in SI 11.2. Government marks will be designated by their number as appearing on the chart. Marks "A" through "E", "W", and "L" will be designated by their alphabetic designator. Approximate positions for the government navigation marks and Marks "A" through "E" are shown in Attachment A.
- 11.2 An inflatable mark set to windward of the starting line as a windward mark will be designated "W". An inflatable mark set to leeward of the starting line as a leeward mark will be designated "L".
- 11.3 A limiting mark may be set to protect the committee boat close to her and on the same end of the starting line. No boat shall pass between the limiting mark and the committee boat. (This limiting mark is not a mark of the course.)

12. START

- 12.1 The Starting Line will be a line between an orange flag flown on the Race Committee Boat and a red inflated sphere or inflatable mark set toward the left side of the course from the Committee Boat.
- 12.2 Boats whose warning signal has not been made shall keep clear of the starting area.

13. THE FINISH

- 13.1 The Finish Line will be between an orange flag flown on the Race Committee Boat and a white



inflated sphere or inflatable mark set to the left side relative to the final leg of the course.

14. TIME LIMIT

- 14.1 The time limit shall be 3 hours for each class. Boats failing to finish within 60 minutes corrected time after the first boat of their class finishes will be scored "Did Not Finish" (DNF). This changes RRS Rule 35 and Rule A4.1.

15. PROTESTS

- 15.1 Protests shall be written on forms available at the Host Club. They shall be filed with the Regatta Chairman. Protest time will end one hour after the Race Committee boat docks, signaled by a horn. Protests will be heard in the

approximate order received.

- 15.2 Protest notices will be posted on the Official Bulletin Board within 20 minutes following the protest time limit.

16. SCORING

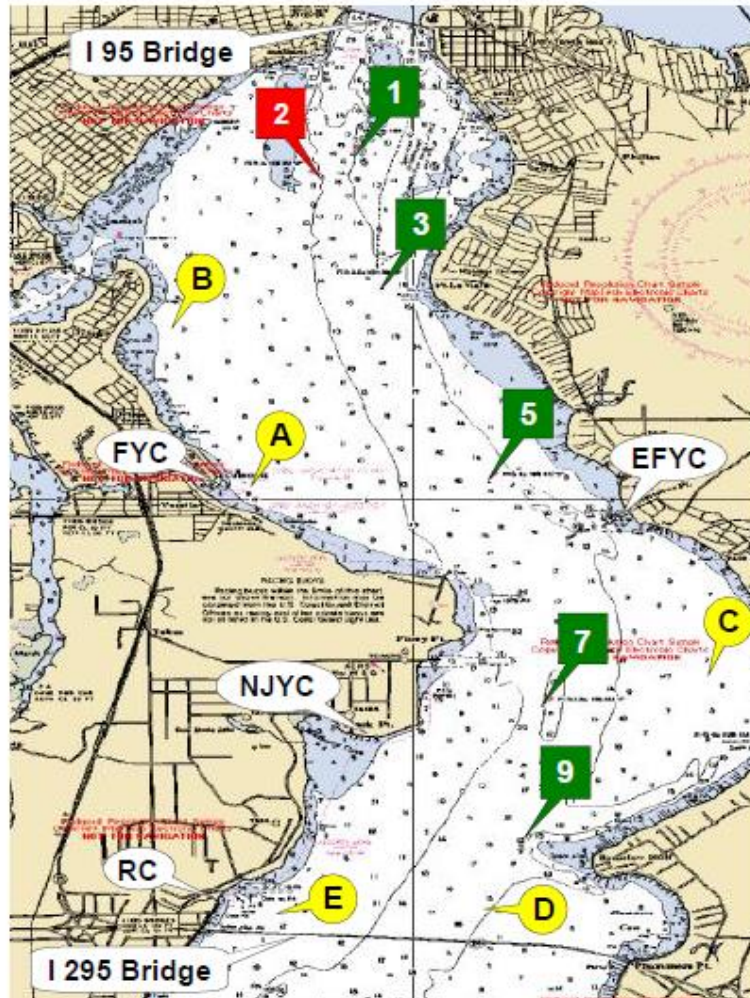
- 16.1 Classes will be scored using PHRF Time on Distance.
- 16.2 The Low Point scoring system of Appendix A will apply.

17. PRIZES

- 17.1 Results will be announced at the Host Club following the race. First, second, and third place prizes will be awarded for classes of five or more.

ATTACHMENT A

Distance	nm
1 to 3	1.039
1 to 5	2.787
1 to 7	4.643
1 to A	2.793
1 to B	1.570
3 to 5	1.773
3 to 7	3.615
3 to 9	4.638
3 to A	1.829
3 to B	1.126
3 to C	3.763
5 to 7	1.863
5 to 9	2.926
5 to A	1.468
5 to B	2.299
5 to C	2.029
5 to D	3.486
7 to 9	1.095
7 to C	0.977
7 to D	1.697
7 to E	2.240



From 2011
USCG Light List

Green 1
N 30° 17.813
W 81° 40.411

Red 2
N 30° 17.628
W 81° 40.635

Green 3
N 30° 16.780
W 81° 40.259

Green 5
N 30° 15.142
W 81° 39.466

Green 7
N 30° 13.305
W 81° 39.077

Green 9
N 30° 12.216
W 81° 39.237

Red 10
N 30° 09.513
W 81° 41.399

Green 11
N 30° 09.305
W 81° 40.794

Also From 2011
USCG Light List

Race Can "C"
N 30° 13.564
W 81° 37.989

Race Can "A"
N 30° 15.090
W 81° 41.160

Race Can "D"
N 30° 11.648
W 81° 39.522

Race Can "B"
N 30° 16.581
W 81° 41.539

Race Can "E"
N 30° 11.648
W 81° 40.822