

FALL RIVER RACE
FCSA Fall River Series #4 of 6
Saturday, September 24th, 2016



North Florida Cruising Club
PO Box 24268 Jacksonville, FL 32241

NOTICE OF RACE

1.0 RULES

The Regatta will be governed by *The Racing Rules of Sailing* (RSS), the rules of First Coast Sailing Association and this NOR. These may be altered by the Sailing Instructions.

2.0 ELIGIBILITY

- 2.1 The race is open to all boats with a current PHRF certificate from First Coast Sailing Association (FCSA -www.sailjax.com)
- 2.2 Boats that do not have a current PHRF rating assigned by FCSA may obtain a provisional new rating (\$35.00 first-time annual fee) that will be submitted to FCSA for formal review. NFCC Club Handicapper is Bill Weinbecker (William.weinbecker@gmail.com).
- 2.3 A boat participating in the Spinnaker or Non-Spinnaker Class shall have sail numbers on the mainsails, spinnakers, and all headsails with an LP exceeding 130% of J. A boat sailing in the Cruiser Class shall have an identifying sail number on her mainsail.
- 2.4 Eligible boats may enter by completing registration with North Florida Cruising Club, which is the organizing authority.

3.0 CLASSES

- 3.1 The fleet will be divided into three classes: Spinnaker, Non-Spinnaker, and Cruiser. A Spinnaker Cruiser Class or Multihull Class may also be created with at least three registrants. This is Race #4 for boats competing in the FCSA Fall Series.

4.0 SCHEDULE OF EVENTS

- 4.1 Saturday, September 24: Check in with committee boat near marker G5 (Near Epping Forest YC) starting at 1100
- 4.2 Saturday, September 24: Race start @ 12:00 noon

5.0 ENTRY FEE/REGISTRATION

- 5.1 Entry fee is \$25. Mail checks payable to North Florida Cruising Club and accompanied by an entry form (Standard Race Entry Form available at <http://www.sailjax.com>). Mail race applications and fees to NFCC PO Box 24268 Jacksonville, FL 32241

6.0 SAILING INSTRUCTIONS

- 6.1 Sailing Instructions will be available on the First Coast Sailing Association website www.sailjax.com.

7.0 COURSE

- 7.1 Course will be a single PHRF Time on Distance race using government navigation marks and inflatable markers.

8.0 SCORING THE RACE

- 8.1 Classes will be scored using PHRF Time on Distance.
- 8.2 The Low Point scoring system of Appendix A will apply.
- 8.3 Each boat starting and finishing the race, and not thereafter retiring or being disqualified, will be scored points equal to her corrected finishing place in class.
- 8.4 Results of this race will be forwarded to the First Coast Sailing Association for inclusion in the computation for Series scoring.

9.0 RACE PRIZES

- 9.1 First, second and third place prizes will be awarded. Fewer prizes may be awarded in classes with fewer than five boats.

10.0 INFORMATION

Contact: Ted Jones, 904-838-8363

FALL RIVER RACE
FCSA Fall Series #4 of 6
Saturday, September 24, 2016



North Florida Cruising Club
PO Box 24268 Jacksonville, FL 32241

SAILING INSTRUCTIONS

1. RULES

1.1 The regatta will be governed by *The Racing Rules of Sailing* (RRS) except as modified by the rules of the First Coast Sailing Association and these Sailing Instructions.

1.2 Racing Rules A4 and A5 are changed by SI 12.3 as follows: "A boat starting later than ten minutes after her starting signal will be scored 'Did Not Start' without hearing."

1.3 Racing Rules 35, A4, and A5 of the RRS are changed by SI 14.1 as follows: "A boat failing to finish within 60 minutes in corrected time after the first boat in her class will be scored 'Did Not Finish' without a hearing."

2. ENTRIES

2.1 Eligible boats are those who have officially entered by completing a registration form with North Florida Cruising Club in advance or during the registration period as set forth in the Notice of Race.

2.2 Additional eligibility requirements and class definitions are defined in the Notice of Race Articles 2 and 3.

3. SAFETY

3.1 All competitors are required to conform to the U.S. Coast Guard regulations and the RRS concerning personal floatation devices and other required equipment.

3.2 Boats shall not impede the passage of a vessel that can safely navigate only within a narrow channel or commercial fishing vessels while fishing or vessels with restricted ability to maneuver. Racing boats interfering with other vessels may be subject to protest by the Race Committee or contestants and possible disqualification.

3.3 Race Committee will monitor VHF Channel 72 and boats must have VHF on and monitored or give the committee boat a cell phone number to reach them.

3.4 Boats shall attempt to check in with the Race Committee by sailing past on the non-course side prior to their class Warning Signal.

3.5 Boats withdrawing from a race prior to finishing shall make every effort to ensure that Race Committee is notified that they have withdrawn.

4. NOTICES TO COMPETITORS

4.1 Notices to competitors will be posted on www.sailjax.com

5. CHANGES IN THE SAILING INSTRUCTIONS

5.1 Any change in the Sailing Instructions will be communicated on Channel 72 before 12:00 on the day of the race.

5.2 Oral changes to the Sailing Instructions may be communicated to each boat on Channel 72 while on the water and prior to her warning signal.

6. SIGNALS MADE ASHORE

6.1 TBD

7. RACE SCHEDULE

7.1 Saturday, September 24th, 2016 one race

7.2 Schedule of Events:

Check in with committee boat: 11:00 am

Race Start: 12:00 noon

8. CLASS FLAGS

8.1 Class flags will be as follows:

Class	Flag
Spinnaker	Pink
Non-Spinnaker	Navy Blue
Cruiser	Gold

9. RACING AREA

9.1 The racing area will be in the St. Johns River North of the Buckman Bridge.

10. THE COURSE

10.1 Race course will be displayed from a course board on the Race Committee boat.

10.2 A single race using river navigation marks will be displayed using the designation of the River Marks as depicted in Attachment A.

11. MARKS

11.1 Marks may be government navigation marks as depicted on NOAA Chart 11492 (as corrected by Notices to Mariners) or yellow inflatable Mark "W" described in SI 11.2. Government marks will be designated by their number as appearing on the chart.

Approximate positions for the government navigation marks are shown in Attachment A.

11.2 A yellow inflatable mark set to windward of the starting line as a windward mark will be designated "W", WHISKEY.

11.3 A limiting mark may be set to protect the committee boat close to her and on the same end of the starting line. No boat shall pass between the limiting mark and the committee boat. (This limiting mark is not a mark of the course.)

12. START

12.1 The Starting Line will be a line between an orange flag flown on the Race Committee Boat and a yellow inflatable mark set toward the left side of the course from the Committee Boat.

12.2 Boats whose warning signal has not been made shall keep clear of the starting area.

12.3 A boat starting later than ten minutes after her starting signal will be scored "Did Not Start" without hearing. This changes Rules A4 and A5.

13. THE FINISH

13.1 The Finish Line will be between an orange flag flown on the Race Committee boat and a yellow inflatable mark set to the left side relative to the final leg of the course.

14. TIME LIMIT

14.1 The time limit shall be 3 hours for each class. A boat failing to finish within 60 minutes in corrected time after the first boat in her class will be scored "Did Not Finish" without a hearing. This changes RRS Rule 35 and Rule A4.1.

15. PROTESTS

15.1 Protests shall be filed with the Race Committee. Protest time will end one hour after the Race Committee boat docks after the racing.

16. SCORING

16.1 Classes will be scored using PHRF Time on Distance.

16.2 The Low Point scoring system of RRS Appendix A will apply.

17. PRIZES

17.1 Awards and Results will be announced at the NFCC General Meeting on Thursday, October 20th, 6:30 PM.

17.2 The results will also be posted on the FCSA website www.sailjax.com.

FURTHER INFO:

Ted Jones, 904-838-8363

FCSA's purpose is to handicap sailboats (PHRF), make up the annual schedule, sponsor an Interclub Regatta, and hold an Awards and General Meeting in January. FCSA's Board of Directors is made up of one volunteer from each of the eight member clubs.

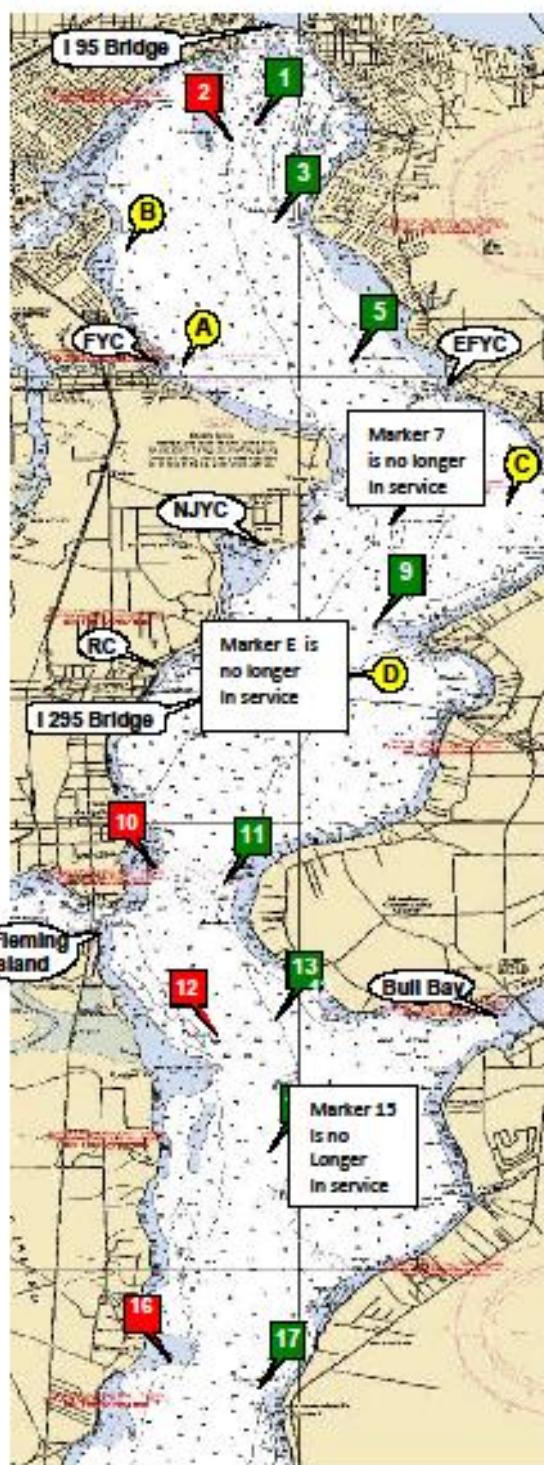
See a club handicapper to get a PHRF rating. New rating \$35, Renew by February 1st \$30, Change rating \$5.

The handicapping committee consists of one volunteer from each club and a volunteer Chief Handicapper. Requests for ratings are completed by a club handicapper and approved by the Chief Handicapper. Rating protests are submitted to the Chief Handicapper and voted on by the handicapping committee.



Distance nm

1 to 3	1.039
1 to 5	2.787
1 to 7	4.643
1 to A	2.793
1 to B	1.570
3 to 5	1.773
3 to 7	3.615
3 to 9	4.638
3 to A	1.829
3 to B	1.126
3 to C	3.763
5 to 7	1.863
5 to 9	2.926
5 to A	1.468
5 to B	2.299
5 to C	2.029
5 to D	3.486
7 to 9	1.095
7 to C	0.977
7 to D	1.697
7 to E	2.240
9 to C	1.726
9 to D	0.618
9 to E	1.486
A to B	1.523
A to C	3.140
B to C	4.303
C to D	2.328
C to E	3.111
D to E	1.127
11 to 13	2.317
11 to 15	3.400
11 to 17	5.631
11 to 17A	6.836
13 to 15	1.109
13 to 17	3.360
13 to 17A	4.575
13 to 18	5.585
15 to 17	2.252
15 to 17A	3.467
15 to 18	4.476
17 to 17A	1.216
17 to 18	2.225
17A to 18	1.010
18 to 20	2.038



From 2011 USCG Light List

Green 1
N 30° 17.813
W 81° 40.411

Red 2
N 30° 17.628
W 81° 40.635

Green 3
N 30° 16.780
W 81° 40.259

Green 5
N 30° 15.142
W 81° 39.466

Green 7
N 30° 13.305
W 81° 39.077

Green 9
N 30° 12.216
W 81° 39.237

Red 10
N 30° 09.513
W 81° 41.399

Green 11
N 30° 09.305
W 81° 40.794

Red 12
N 30° 07.240
W 81° 40.800

Green 13
N 30° 07.036
W 81° 40.224

Green 15
N 30° 05.926
W 81° 40.283

Red 16
N 30° 04.038
W 81° 41.254

Green 17
N 30° 03.671
W 81° 40.393

Green 17A
N 30° 02.457
W 81° 40.522

Red 18
N 30° 01.445
W 81° 40.551

Green 19
N 30° 01.335
W 81° 40.279

Red 20
N 29° 59.822
W 81° 39.126

FCSA offers three series of PHRF races: the Spring Series Trophy, the Fall Series Trophy, and the Offshore Trophy. When a rated sailboat is entered in a club race, noted as a FCSA points race, the boat is competing for a club trophy for that race and points toward the annual trophy for the series.

Rules for the annual trophies:

Spring and Fall Series Trophies:
6 races each, 1 throw-out race.

Offshore Series Trophies:
14 races, 7 throw-out races.

Note: There will be no throw out races in a series if less than four races are held due to cancellation or abandonment of races in that series.

Race scoring will be the low point system, 2012-2016 Racing Rules of Sailing, Appendix A, Rule A4.

Series scoring will be as follows:

DNF, RAF = # that started the race
DNS, DSQ = # that came to the start
DNC = # that attempted to race
DNE = # entered in the series + 1
Ties decided under Appendix A8.

Trophies divided by Spinnaker, Non-Spinnaker, and Cruising classes. All competitors must have a current FCSA PHRF rating and be a member of one of the seven FCSA member clubs.

Also From 2011 USCG Light List
Race Can "C"
N 30° 13.564
W 81° 37.989

Race Can "A"
N 30° 15.090
W 81° 41.160

Race Can "B"
N 30° 16.581
W 81° 41.539

Race Can "D"
N 30° 11.648
W 81° 39.522

Race Can "E"
N 30° 11.648
W 81° 40.822

(Check FCSA Website www.sailjax.com for contacts, addresses, phone numbers of club representatives)

- EFYC - Epping Forest Yacht Club www.efyc.com
- FYC - Florida Yacht Club www.thefloridayachtclub.org
- NJYC - Navy Jax Yacht Club www.navyjaxyachtclub.com
- RCoJ - Rudder Club www.rudderclub.com

- NFCC - North Florida Cruising Club www.nfcccail.com
- SAYC - St Augustine Yacht Club www.staugustineyachtclub.com
- HRYC - Halifax River Yacht Club www.hryc.com
- SYC - Smyrna Yacht Club www.smyrnayachtclub.com