



## **Blue Max Race**

**NORTH FLORIDA CRUISING CLUB**

**SATURDAY, June 18, 2016**

St. Johns River starting in the vicinity of Marker 13

# **CHANGE TO SAILING INSTRUCTIONS**

## **Effective June 17, 2016**

**Section 8.0 is herewith deleted and replaced with the following:**

### **8.0 THE COURSE**

**8.1** The course for all classes will be approximately 9.0 NM:

Start between the RC boat and an inflatable buoy, proceed to a designated windward mark (leave to port), proceed to marker 18 (leave to port), then to marker 20 (leave to port), finish at approximately N 30°00', W 81°40' (leave RC boat to starboard). See attached chart.



## Blue Max Race

### NORTH FLORIDA CRUISING CLUB

**SATURDAY, June 18, 2016**

St. Johns River starting in the vicinity of Marker 13

### NOTICE OF RACE AND SAILING INSTRUCTIONS

#### 1.0 RULES

The race will be governed in order of precedence by this Notice of Race and Sailing Instructions; the rules of the First Coast Sailing Association (FCSA); and The Racing Rules of Sailing, 2013-2016 (RRS).

#### 2.0 MANAGEMENT

This race will be under the management of the North Florida Cruising Club, which is also the organizing authority.

#### 3.0 ELIGIBILITY

- 3.1 The race is open to all yachts with a valid PHRF certificate from the First Coast Sailing Association (FCSA - [www.sailjax.com](http://www.sailjax.com)). Yachts that do not have a current PHRF rating assigned by the FCSA may obtain a provisional new rating (\$35.00 first-time annual fee) that will be submitted to FCSA for formal review.
- 3.2 A yacht participating in the Spinnaker or Non-Spinnaker Class shall have her sail number on the mainsails, spinnakers, and all headsails with an LP exceeding 130% of J. A yacht sailing in the Cruiser Class shall have an identifying sail number on her mainsail.

#### 4.0 REGISTRATION and ENTRY FEE

- 4.1 The standard FCSA race entry form must be completed in full and filed with the Race Committee before the start of the race.
- 4.2 Participants are encouraged to register in advance by sending the completed form with the appropriate fee to: Barbara Sperbeck, acting NFCC Race Captain, PO Box 24268, Jacksonville, FL 32260. Registration may also be completed on the day of the race and handed to the Race Committee on the water.
- 4.3 The entry fee is \$25.00 for NFCC members and \$30 for non-members (\$25 with US Sailing membership). Checks should be made payable to North Florida Cruising Club.

#### 5.0 CLASSES

The fleet will be divided into three classes: Spinnaker, Non-Spinnaker, and Cruiser. Classes may be further divided into Divisions if the number of entries permit. A multihull class may also be created with at least three registrants.

#### 6.0 SCHEDULE OF EVENTS

Registration: Race Committee arrival till 11:45

Warning signal for first start: 11:55

Post-race activities and awards presentation will be held at the Green Cove Springs City dock from 1600 to 1900. Docking at the public floating docks is free for the day, and \$10 for overnighting.

#### 7.0 NOTICES TO COMPETITORS

- 7.1 Monitor VHF 72 before the race for any last minute changes.

## **8.0 THE COURSE**

~~8.1 The course for all classes will be approximately 8.402 NM:~~

~~— Start between RC boat and ATON marker 13, proceed to marker 18 (leave to port), then to marker 20 (leave to port), finish at approximately N 30°00', W 81°40' (leave RC boat to starboard). See attached chart. REVISED June 17~~

## **9.0 THE START and FINISH**

**9.1** The start line will be between an orange flag on the RC boat and ATON marker 13.

**9.2** Yachts shall check in with the race committee prior to the warning signal of the first start. Failure to check in will result in a DNC.

**9.3** The race will be started in accordance with RRS 26 with the warning signal given five minutes before the starting signal. The warning signal for the second start will be made after the prior class has substantially cleared the line.

**9.4** Class flags will be: Gold for the Spinnaker and Non-Spinnaker classes combined; Pink for the Cruiser class. The Cruiser class will start first.

**9.5** The preparatory flag for all classes will be the “P” flag.

**9.6** Individual and general recalls will be in accordance with RRS 29. In addition, the race committee will attempt to announce over VHF channel 72 the sail numbers of premature starters. If a general recall is signaled, the order of starts will not change; all subsequent starts will be delayed correspondingly.

**9.7** A yacht failing to cross the starting line within 15 minutes of the final start signal may be scored DNS.

**9.8** If a postponement is signaled by display of the “AP” flag, the warning signal for races not yet started will be made not more than 5 minutes after “AP” is lowered.

**9.9** The finish line will be between an orange flag on the race committee boat and a floating buoy.

**9.10** A standoff buoy attached to the race committee boat shall be considered part of the boat.

**9.11** All times used in association with the race will be Eastern Daylight Saving Time (UTC minus 4 hours in 24 hour format). Race committee time will be synchronized with the US Naval Observatory Master Clock telephone voice announcer: 202-762-1401 or 202-762-1069. Each yacht should likewise coordinate his/her timepiece.

## **10.0 PENALTIES**

The two-turns penalty will apply in accordance with RRS 44. Any yacht which exonerates herself from a minor foul in this manner shall notify the Race Committee of such action after finishing.

## **11.0 PROTESTS**

All protests shall be submitted in writing to the Race Committee after the race no later than 15 minutes following a horn signal made upon arrival of the Race Committee boat at the dock. Notice of protest must also be given immediately after finishing by hail, and acknowledged by the Race Committee.

## **11.0 TROPHIES**

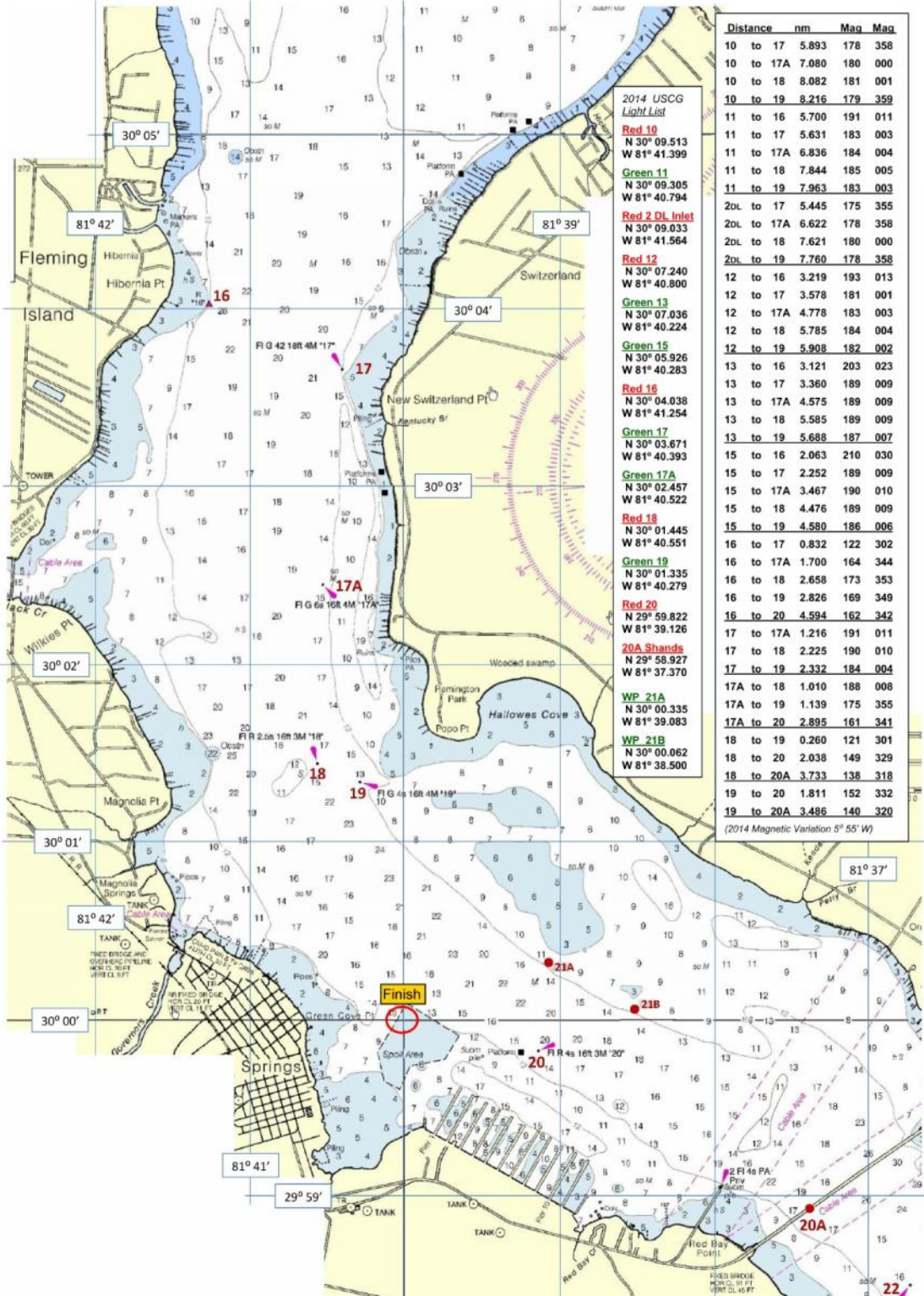
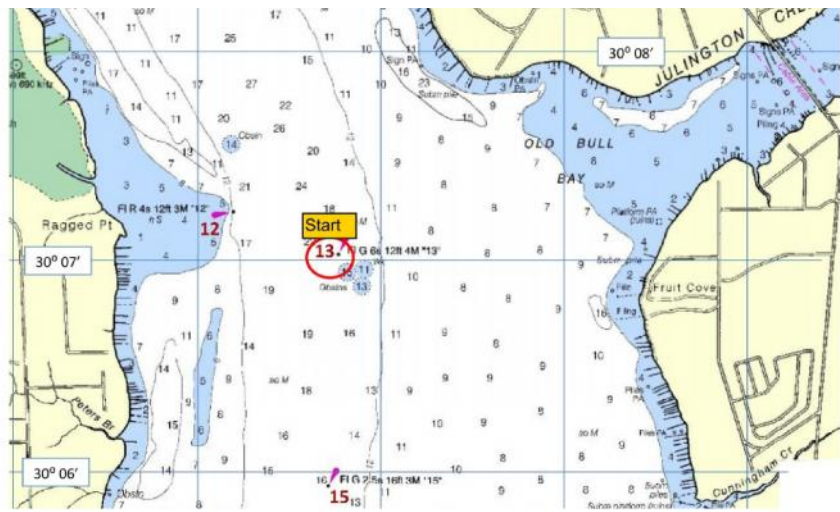
1st, 2nd, and 3rd place trophies will be awarded in Spinnaker, Non-Spinnaker, and Cruiser classes.

## **12.0 POST-RACE**

Results will be announced AND TROPHIES AWARDED after the race at the Green Cove Springs downtown city docks sometime between 1600 and 1800 . The results will later be posted on the FCSA website [www.sailjax.com](http://www.sailjax.com). Race results will also be announced at the NFCC General Meeting, Thursday, July 21, 7:30 PM, location TBA.

**FURTHER INFO:** Barbara Sperbeck, acting NFCC Race Captain. e-mail:  
[BarbaraSperbeck@bellsouth.net](mailto:BarbaraSperbeck@bellsouth.net) 904-229-6130 (cell);

You are welcome and encouraged to tie up on the floating docks following the race for free. Overnight stay is a 10\$ fee payable to the local Sheriff – a short walk up the hill.



Distance	nm	Mag	Mag
10 to 17	5.893	178	358
10 to 17A	7.080	180	000
10 to 18	8.082	181	001
10 to 19	8.216	179	359
11 to 16	5.700	191	011
11 to 17	5.631	183	003
11 to 17A	6.836	184	004
11 to 18	7.844	185	005
11 to 19	7.963	183	003
20L to 17	5.445	175	355
20L to 17A	6.622	178	358
20L to 18	7.621	180	000
20L to 19	7.760	178	358
12 to 16	3.219	193	013
12 to 17	3.578	181	001
12 to 17A	4.778	183	003
12 to 18	5.785	184	004
12 to 19	5.908	182	002
13 to 16	3.121	203	023
13 to 17	3.360	189	009
13 to 17A	4.575	189	009
13 to 18	5.585	189	009
13 to 19	5.688	187	007
15 to 16	2.063	210	030
15 to 17	2.252	189	009
15 to 17A	3.467	190	010
15 to 18	4.476	189	009
15 to 19	4.580	186	006
16 to 17	0.832	122	302
16 to 17A	1.700	164	344
16 to 18	2.658	173	353
16 to 19	2.826	169	349
16 to 20	4.594	162	342
17 to 17A	1.216	191	011
17 to 18	2.225	190	010
17 to 19	2.332	184	004
17A to 18	1.010	188	008
17A to 19	1.139	175	355
17A to 20	2.895	161	341
18 to 19	0.260	121	301
18 to 20	2.038	149	329
18 to 20A	3.733	138	318
19 to 20	1.811	152	332
19 to 20A	3.486	140	320

- 2014 USCG Light List
- Red 10**  
N 30° 09.513  
W 81° 41.399
  - Green 11**  
N 30° 09.305  
W 81° 40.794
  - Red 2 DL Inlet**  
N 30° 09.033  
W 81° 41.564
  - Red 12**  
N 30° 07.240  
W 81° 40.800
  - Green 13**  
N 30° 07.036  
W 81° 40.224
  - Green 15**  
N 30° 05.926  
W 81° 40.283
  - Red 16**  
N 30° 04.038  
W 81° 41.254
  - Green 17**  
N 30° 03.671  
W 81° 40.393
  - Green 17A**  
N 30° 02.457  
W 81° 40.522
  - Red 18**  
N 30° 01.445  
W 81° 40.551
  - Green 19**  
N 30° 01.335  
W 81° 40.279
  - Red 20**  
N 29° 59.822  
W 81° 39.126
  - 20A Shands**  
N 29° 58.927  
W 81° 37.370
  - WP 21A**  
N 30° 00.335  
W 81° 39.083
  - WP 21B**  
N 30° 00.062  
W 81° 38.500

(2014 Magnetic Variation 5° 55' W)