



HANGOVER RACE
January 1, 2016
The Rudder Club of Jacksonville
8533 Malaga Avenue
Jacksonville, FL 32244

Notice of Race

1 RULES

- 1.1 The race will be governed by *The Racing Rules of Sailing* (RRS), the prescriptions of US SAILING; and the rules of participating classes.
- 1.2 Rule 41 is changed such that a boat accepting assistance under Fundamental Rule 1.1 is exempt from the provisions of RRS 41 - Outside Help. Capsized sailboats are encouraged to accept assistance as necessary.

2 ADVERTISING

Advertising shall not be displayed.

3 ELIGIBILITY AND ENTRY

- 3.1 The regatta is open to all boats of all classes.
- 3.2 Eligible boats may enter by completing the attached entry form and submitting it electronically or printing it and submitting it by facsimile or in person at the time of registration. The registration form is also available at <http://www.rudderclub.com/>

3.3 There will be one Portsmouth Class.

4 FEES: There will be no race registration fee. The fee for the New Year's Day meal is \$5.00 for non-Rudder Club members.

5 SCHEDULE

5.1 Schedule of Events

January 1st 2015

Registration: 1000 - 1030

Competitor's meeting: 1100

Warning signal for first class: 1155

5.2 Number of races

One race is scheduled.

6 SAILING INSTRUCTIONS

The sailing instructions will be available after 1500 on or before 26 December 2015 at www.rudderclub.com and at the time of registration. This Notice, and Sailing

Instructions will be available on the Rudder Club Web Site at

<http://www.rudderclub.com/regattas.html>

and posted on the official bulletin board on the north exterior wall of the Rudder Club. Changes to the Sailing Instructions will be posted on the Rudder Club web site; and posted on the official bulletin prior to 1000 on the morning of the race. Subsequent changes will be made in the form of a Notice to Competitors. Schedule changes will be posted prior to 1900 (7:00 PM) on the day prior to the race. Oral changes may be given on the water in accordance with RRS 90.2(c).

7 VENUE

The racing area will be in the St. Johns River between the Buckman Bridge to the south and the Fuller Warren Bridge to the north as depicted on NOAA Chart 11492.

8 THE COURSES

The course to be sailed will be a windward/leeward.

9 TIME LIMIT

The time limit shall be 3 hours.

10 SAFETY

10.1 All competitors are required to conform with the U.S. Coast Guard regulations and the RRS concerning personal floatation devices and other required equipment. All yachts are reminded that under fundamental rule 4 "A boat is solely responsible for deciding whether or not to start or to continue racing.

11.2 Boats shall not impede the passage of a vessel which can safely navigate only within a narrow channel or commercial fishing vessels while fishing or vessels with restricted ability to maneuver. Racing

yachts interfering with other vessels may be subject to protest by the Race Committee or contestants and possible disqualification.

12 ADDITIONAL INFORMATION

12.1 For information regarding the Portsmouth Rating System see:
<http://www.ussailing.org/racing/offshore-big-boats/portsmouth-yardstick/>

For North American Portsmouth Yardstick (NAPY) Code and Portsmouth Ratings (DPN) see:

<http://www.ussailing.org/racing/offshore-big-boats/portsmouth-yardstick/current-tables/>

Note: Most cruising class boats (those with a shelter of some sort are listed under Offshore Classes.

12.2 For further information please contact Dick Allsopp at dallsopp@ussailing.net or 904-278-0329.



The Rudder Club of Jacksonville, Inc.
8533 Malaga Ave. Jacksonville, FL 32244
(904)264-4094
RACE REGISTRATION FORM
Hangover Race

Person in Charge _____
 (See RRS 46)
 Address _____
 City/State/Zip _____
 Telephone _____
 Cell Phone _____
 Club Affiliation _____

Emergency Contact:

Name _____
 Telephone _____

Boat Name _____
 Sail Number _____
 Make/Model _____
 NAPY Code _____
 (See URL below)
 D-PN _____
 MMSI Number _____
 (If assigned. See: www.boatus.com/mmsi/)

Spinnaker/Non Spinnaker _____
 North American Portsmouth Yardstick – For more information see:

<http://www.ussailing.org/racing/offshore-big-boats/portsmouth-yardstick/>

For NAPY Code and Portsmouth Rating see:
<http://www.ussailing.org/racing/offshore-big-boats/portsmouth-yardstick/current-tables/>

Crew Names:

Agreement and Statement of Understanding

In consideration of the acceptance of my application to enter the Hangover Race, I understand and accept that serious accidents occasionally occur during yacht racing events and that participants in yacht racing occasionally sustain mortal or serious injuries and/or property damage as a consequence thereof. I knowingly assume the risks of yacht racing. It is my responsibility as the person in charge to obtain a signed release from each member of his or her crew before the race begins. I agree to abide by the rules, regulations and sailing instructions of the Hangover Race, the ISAF and the United States Sailing Association. I also agree to allow Video or photographs of my boat and crew to be used for advertising and promotional purposes. Minors must present a copy of this form signed by a parent or guardian before being allowed to race.

Signature Person in Charge _____ Date _____

Parent/Guardian's Signature _____ Date _____
 if person in charge is a minor

Portsmouth Modification Factors that apply _____

For mono hull see

<http://www.ussailing.org/racing/offshore-big-boats/portsmouth-yardstick/current-tables/modification-factors-iv/>

For Multihull see:

<http://www.ussailing.org/racing/offshore-big-boats/portsmouth-yardstick/current-tables/mh-modification-factors/>

For help contact the race office at raceoffice@rudderclub.com or 904-314-5237



THE HANGOVER RACE
January 1, 2016
The Rudder Club of Jacksonville
8533 Malaga Avenue
Jacksonville, FL 32244

Sailing Instructions

1. RULES

- 1.1 The race will be governed by The Racing Rules of Sailing (RRS) and the prescriptions of US SAILING
- 1.2 Racing Rule 41 is changed by SI 15.4.
- 1.3 Racing Rules 35, A4 and A5 of the RRS are changed by SI 13.2.2
- 1.4 SI 14.4 implements Section D of Appendix T, Arbitration.

2. NOTICES TO COMPETITORS

Notices to competitors will be posted on the official notice board on the north exterior wall of the Rudder Club.

3. CHANGES IN THE SAILING INSTRUCTIONS

Any change in the Sailing Instructions will be posted on the official bulletin board on the north exterior wall of the Rudder Club before 0900 on January 1st.

4. SIGNALS MADE ASHORE

- 4.1 Signals made ashore will be displayed from the flag pole located on the north side of the Rudder Club.
- 4.2 Code Flag "AP", Answering Pennant, displayed ashore with two sound signals (one when lowered) means "The race is postponed: do not leave the dock." The warning signal will be made not less than 45 minutes after AP is lowered.

5. SCHEDULE OF RACE

- 5.1 Schedule 1 January 2016
Registration: 10:00am - 10:30am
Sailors meeting: 11:00 pm
Warning signal for first class: 11:55 am.
- 5.2 All registered boats will race as one Portsmouth North American class.
- 5.3 There will be one race.

6. CLASS FLAGS

Class flag will be the International Numeral Pennant One as depicted under Race Signals in the RRS.



7. RACING AREA

The racing area will be in the St. Johns River between the Buckman Bridge to the south and the Fuller Warren Bridge to the north as depicted on NOAA Chart 11492.

8. THE COURSE

The course will be a windward leeward as depicted in Attachment A and displayed on a white board on the Race committee boat. A numeral following the course description will indicate that the course is that many times around. The final leg will be from the windward mark directly to the finish in the vicinity of the pier.

9. MARKS

- 9.1 The starting mark will be a yellow cylinder set to the left of the committee boat relative to the first leg of the course.
- 9.1 The windward mark will be an orange cylinder set to windward of the starting line and designated as "W" or it will be a River Navigation Mark as depicted in attachment B.
- 9.2 The leeward mark will be the starting mark and will be a yellow cylinder. It will be designated "L" on the course board.
- 9.3 The finish mark will be a small orange sphere.
- 9.4 All marks will be left to port

10. START

The starting line will be between an orange flag flown on the Race Committee Boat and a mark set toward the left side of the course from the RC boat. The starting line will be designated "S" on the course board.

11 CHANGE OF COURSE AFTER THE START

- 11.1 To change the next leg of the course, the race committee will move the original mark to a new position.
- 11.2 A change of course will be signaled near the mark beginning the leg being changed by a race committee boat that will display code flag "CHARLIE" and sound a horn periodically.

12 THE FINISH

The finish line will be between an orange flag on the northeast corner of the Rudder Club Pier and an orange mark set off the pier or the committee boat and an orange mark set to its left relative to the last leg of the course. If the orange flag is flown from the committee boat the boat will be anchored in the vicinity of the pier. The finish line will be designated "F" on the course board.

13 SCORING AND TIME LIMIT

- 13.1 All boats will be scored in accordance with the North American Portsmouth Yardstick.
- 13.2 Time Limit
The time limit shall be 3 hours.

14 PROTESTS AND REQUESTS FOR REDRESS

- 14.1 Protests and requests for redress shall be written on forms available at the Rudder Club. They shall be filed with the Race Chairman.
- 14.2 The protest time limit is 90 minutes after the last boat has finished.
- 14.3 Protest notices will be posted on the Official Bulletin Board within 30 minutes following the protest time limit.
- 14.4 Section D of Appendix T, Arbitration, is in effect.

15 SAFETY

- 15.1 All competitors are required to conform to the U.S. Coast Guard regulations and the RRS concerning personal floatation devices and other required equipment. All yachts are reminded that under fundamental rule 4 "The responsibility for a boat's decision to participate in a race or to continue racing is hers alone.

- 15.2 Boats shall not impede the passage of a vessel which can safely navigate only within a narrow channel. Boats interfering with other vessels may be subject to protest by the Race Committee or contestants and possible disqualification.

- 15.3 In accordance with Rule 42.3(i), providing no significant advantage is gained, a boat may employ propulsion using an engine or other method to remain clear of a non-racing vessel when required by Inland Rules.

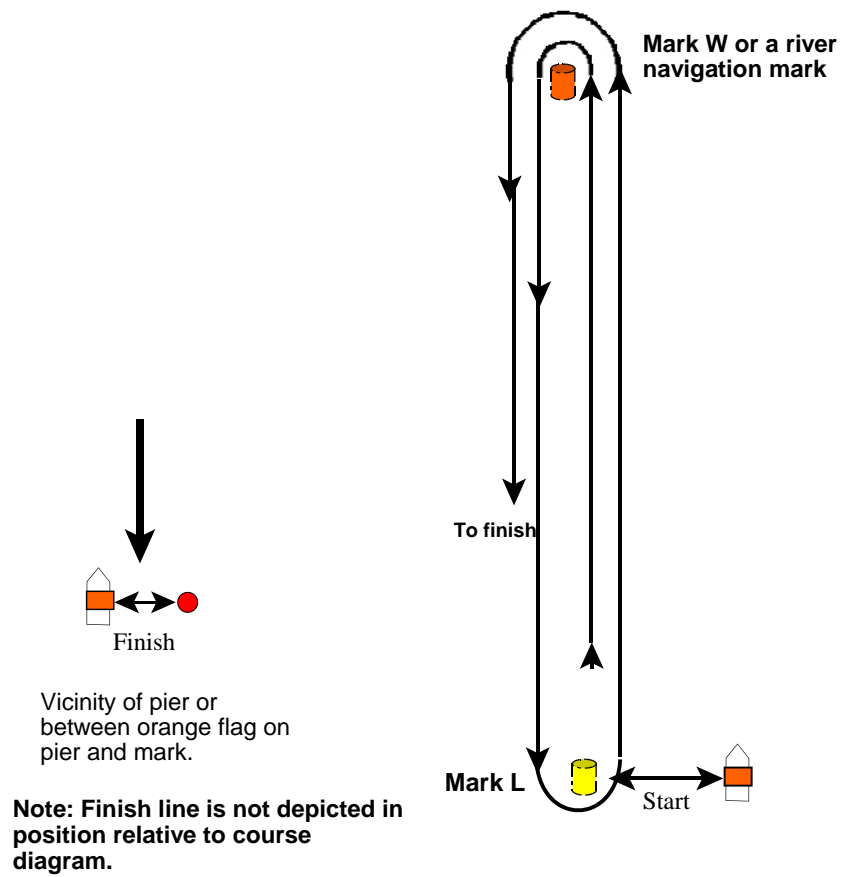
- 15.4 Racing Rule 41 is changed such that a boat accepting assistance under Fundamental Rule 1.1 is exempt from the provisions of RRS 41 - Outside Help. Capsized sailboats are encouraged to accept assistance as necessary.

- 15.5 The Race Committee boat will monitor Marine VHF Channel 78.

16 PRIZES

Results will be announced and prizes presented at the Rudder Club following the race.

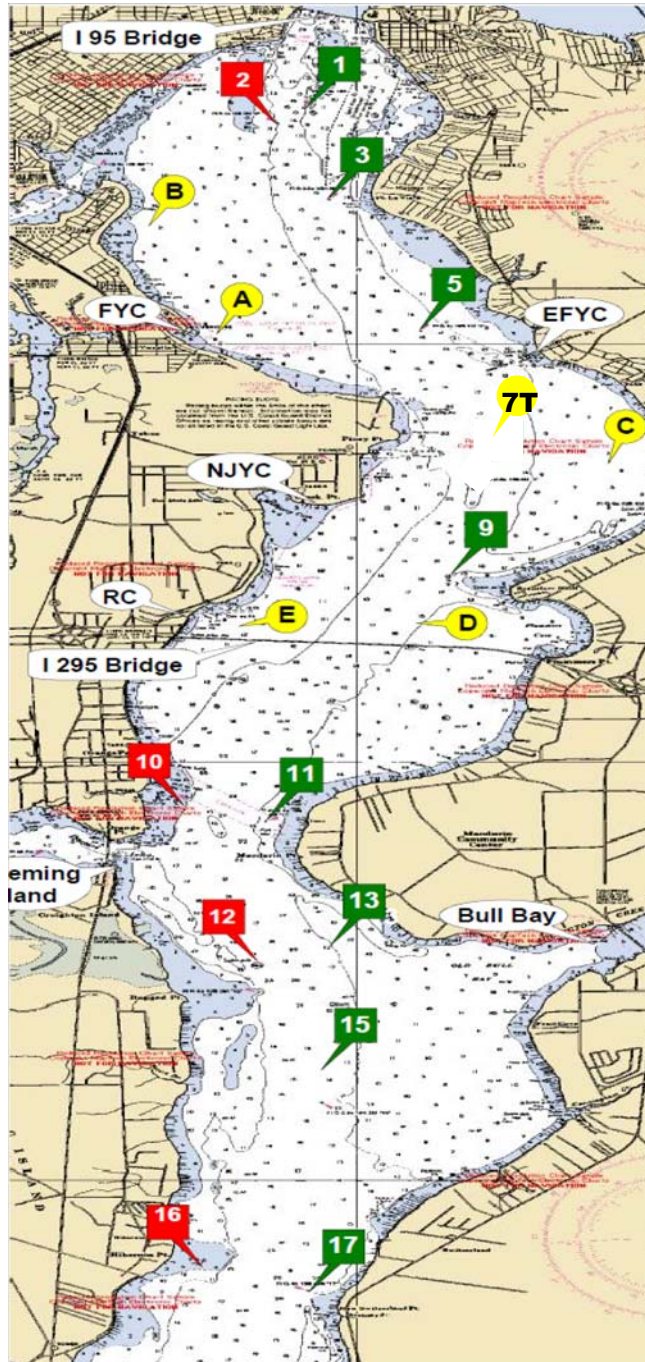
Attachment A



Course "WL" + Numeral

First Coast Sailing Association Race Marks

Distance	nm
1 to 3	1.039
1 to 5	2.787
1 to 7 _T	4.643
1 to A	2.793
1 to B	1.570
3 to 5	1.773
3 to 7 _T	3.615
3 to 9	4.638
3 to A	1.829
3 to B	1.126
3 to C	3.763
5 to 7 _T	1.863
5 to 9	2.926
5 to A	1.468
5 to B	2.299
5 to C	2.029
5 to D	3.486
7 to 9	1.095
7 to C	0.977
7 to D	1.697
7 to E	2.240
9 to C	1.726
9 to D	0.618
9 to E	1.486
A to B	1.523
A to C	3.140
B to C	4.303
C to D	2.328
C to E	3.111
D to E	1.127
11 to 13	2.317
11 to 15	3.400
11 to 17	5.631
11 to 17A	6.836
13 to 15	1.109
13 to 17	3.360
13 to 17A	4.575
13 to 18	5.585
15 to 17	2.252
15 to 17A	3.467
15 to 18	4.476
17 to 17A	1.216
17 to 18	2.225
17A to 18	1.010
18 to 20	2.038



Green 1
N 30° 17.813
W 81° 40.411

Red 2
N 30° 17.628
W 81° 40.635

Green 3
N 30° 16.780
W 81° 40.259

Green 5
N 30° 15.142
W 81° 39.466

Green 7 See Race Mark "7T"
N 30° 13.305
W 81° 39.077

Green 9
N 30° 12.216
W 81° 39.237

Red 10
N 30° 09.513
W 81° 41.359

Green 11
N 30° 09.305
W 81° 40.754

Red 12
N 30° 07.240
W 81° 40.800

Green 13
N 30° 07.036
W 81° 40.224

Green 15
N 30° 05.926
W 81° 40.283

Red 16
N 30° 04.038
W 81° 41.254

Green 17
N 30° 03.671
W 81° 40.393

Green 17A
N 30° 02.457
W 81° 40.522

Red 18
N 30° 01.445
W 81° 40.551

Green 19
N 30° 01.335
W 81° 40.279

Red 20
N 29° 59.822
W 81° 39.126

**Note: If set these marks will be an inflatable mark.

Race Mark "A"
N 30° 15.090 W 81° 41.160

Race Mark "B"
N 30° 11.648 W 81° 39.522

Race Mark "C"
N 30° 13.564 W 81° 37.989

Race Mark "D"
N 30° 16.581 W 81° 41.539

Race Mark "E"
N 30° 11.648 W 81° 40.822

Race Mark "7T"
N 30° 13.305 W 81° 39.077