



**St. Augustine Yacht Club**

Founded 1873

## Compass Rose Challenge (formerly Out and Back Race)

Sunday, October 11, 2015

11:00 AM

### Notice of Race

- 1. Rules** Races will be governed by The Racing Rules of Sailing (RRS) 2013-2016; the 2012-13 ISAF Special Regulations Governing Offshore and Oceanic Equipment and Preparation including US SAILING Prescriptions for the Category 4, except as modified by Section 5 of this Notice Of Race; and by these sailing instructions.
- 2. Eligibility** All seaworthy cruising sailboats (ISAF Cat 4) that are not less than 24 feet in length. All boats should have a PHRF rating issued by the First Coast Sailing Association. (See Sailjax.com for forms). Boats without a rating from FCSA will be issued a provisional rating by SAYC. Smaller boats not less than 20 feet may be eligible on an individual basis at the discretion of the Race Committee.
- 3. Registration** Boats may register on the SAYC website ([staugustineyachtclub.com](http://staugustineyachtclub.com)). Everyone should try to pre-register, but feel free to show up the day of the race at the Skippers Meeting to sign up. The Skipper's Meeting will be held at 8 AM on the day of the race at the SAYC clubhouse, for final Registration and final Sailing Instructions.
- 4. Fees** Entry Fee is **\$26.50 inc. tax** per boat for members, **\$37.00 inc. tax** per boat for non-members. Entry fee check made out to the St. Augustine Yacht Club should be sent to St Augustine Yacht Club, 442 Ocean Vista Ave., St. Augustine, FL 32080. Please note on the check that is for "Compass Rose Challenge". SAYC members may elect to charge the Entry Fee to their account.
- 5. Instructions** See attached sailing instructions.
- 6. Fleets** Boats register to race in one of two PHRF fleets: 'Cruising Fleet' (flying code flag 6, using either their FCSA Spinnaker or Non-spinnaker Rating) or 'Performance Fleet' (flying code flag 5, using their FCSA Spinnaker or Non-spinnaker Rating). Boats in both fleets opting to fly a spinnaker must declare so before the start of the race.
- 7. Prizes** Trophies will be awarded for first, second and third for both classes.
- 8. After Race Award Party** Captains and crew are invited to the St Augustine Yacht Club for the After Race Party at 6 pm.



# St. Augustine Yacht Club

Founded 1873

## Compass Rose Challenge Sailing Instructions – October 11, 2015 11:00 AM

The course will be from a starting line north of the St. Augustine sea buoy to points on three sides of a square (otherwise called a box course), as shown in the diagrams below. Yachts must touch all sides of the square, and may do so at any point along each side, and in any order, before returning to the start/finish line. The choice of the size of the square for each class, and hence the total minimum distance to sail, will be determined at the Skippers' Meeting depending on wind conditions on the day. Note that there are long, medium and short courses for each class. Performance Class will sail a minimum of 29.7 NM on the long course, 22.6 NM on the medium course and 16.9 NM on the short course. Cruising Class boats will sail a minimum of 22.6 NM on the long course, 16.9 NM on the medium course and 12.3 NM on the short course. The starting line is between the Committee Boat and a tetrahedral buoy, set just north of the sea buoy (STA) offshore. Each yacht shall record its own finish time when it is within 300 ft of STA and STA bears 090° m from the helm and to port. Record the finish time using the time piece that is synchronized with the Naval Observatory Master Clock (phone 202-762-1401). Finish times shall be called or texted into the RCoS at (904) 687-4197 or brought to the after-race party.

In the event of hazardous conditions on the ocean or in the inlet the race will be postponed. In the event of light air the course may be shortened before the race or an alternative course chosen.

There will be one five minute starting sequence starting at 10:55 AM. The Race Committee may start the two fleets separately at its discretion, and will announce any change at the Skipper's Meeting or on VHF channel 72 prior to the time the class flags are raised. The timing of the start is determined by the removal of the class flags (time pieces and watches are relative). Sounds are secondary and may fail. The start sequence is as follows:

<i>5 minutes before the start</i>	<i>Class Flag Raised</i>	<i>Performance = Code flag 5</i>	<i>Horn Sound</i>
<i>4 minutes before the start</i>	<i>Preparatory Signal</i>	<i>Cruising = Code flag 6</i>	<i>Horn Sound</i>
<i>1 minute before the start</i>		<i>"P" Flag raised</i> <i>(blue with white square)</i>	<i>Horn Sound</i>
<i>0 time</i>	<i>The Start</i>	<i>"P" Flag Removed</i>	<i>Long Horn Sound</i>
		<i>Class Flag Removed</i>	<i>Horn Sound</i>

All sailors must check in with the committee boat by 10:45 am on VHF channel 72 or by passing by the Committee boat and hailing. The race committee will monitor channel 72 and can provide race information, including any changes to these Race Instructions, up until the class flags are raised. The RCS will communicate any course length changes on VHF channel 72 during the race.

The 720 Degree Turn Rule will be in effect in accordance with rule 44.1 and 44.2.

This race may be sailed with the assistance of self-steering gear, electric or wind (modifies RRS 52).

The following flags may be flown by the committee boat:

Postponement:	rectangular pennant with red and white stripes
General Recall:	yellow pennant outlined in blue
Individual Recall:	white square with a blue cross
Shorten Course	a white square with a blue square in its center
Come Within Hail	Code Flag L, yellow and black squares

Modifying RRS 35, there will be a fixed time limit for the race. Yachts finishing after the time limit established here will be scored DNF. **The Race Time Limit is 6 pm on Sunday, October 11, 2015.**

These races are intended to be a fun and friendly event, so protests are discouraged. Varying boats with captains and crew of differing skill levels will be racing in close quarters so everyone is asked to be courteous and give spacing where needed. The Racing Rules of Sailing should be adhered to at all times.

**The safety of a yacht or sailing vessel and her crew, the decision as to whether or not to start, and having started, whether or not to continue is the sole and exclusive responsibility of each yacht's designated skipper.**

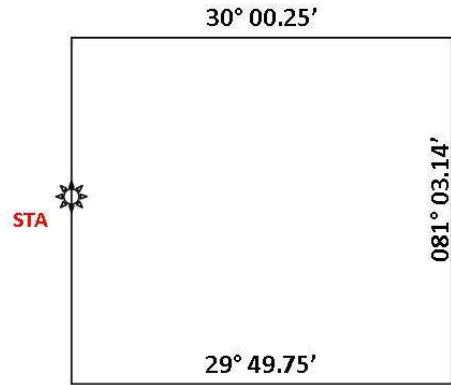
Each skipper is entirely responsible for his/her yacht's own safety, whether afloat or ashore, and nothing, whether in the Notice of Race or Sailing Instructions or anywhere else, reduces this responsibility. It is for the skipper to decide whether the yacht is fit to sail in the conditions in which she will find herself. By going to sea the skipper confirms that the yacht is fit for those conditions and her crew is competent to sail and compete in them.

The yacht is required to hold adequate insurance and in particular to hold insurance against third party claims.

The yacht is responsible for ensuring that she is equipped and seaworthy so as to be able to face extremes of weather; that there is a crew sufficient in number, experience, and fitness to withstand such weather; and that the safety equipment is properly maintained, stowed, and in date and that crew members know how to use it.

The yacht is responsible for adhering to all local, state, federal, and international laws and regulations governing the operation in the body of waters where the race and race events shall be held. This includes conformance to the United States Coast Guard (USCG) Safety Regulations.

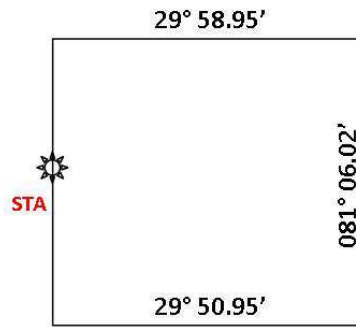
PERFORMANCE CLASS - POSSIBLE COURSES



PERFORMANCE

LONG COURSE

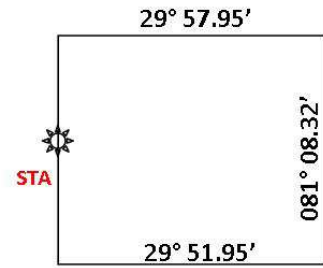
29.7 NM



PERFORMANCE

MEDIUM COURSE

22.6 NM

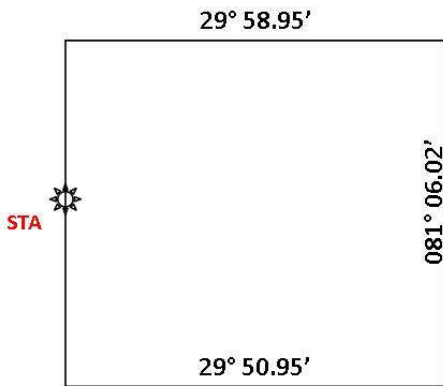


PERFORMANCE

SHORT COURSE

16.9 NM

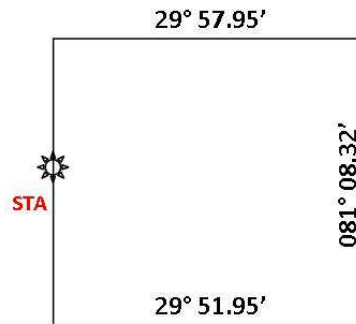
CRUISING CLASS - POSSIBLE COURSES



CRUISING

LONG COURSE

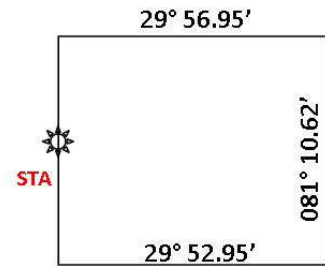
22.6 NM



CRUISING

MEDIUM COURSE

16.9 NM



CRUISING

SHORT COURSE

11.3 NM

**ST AUGUSTINE YACHT CLUB  
YACHT RACING ENTRY FORM**

RACE: Compass Rose Challenge

DATE: October 11, 2015

YACHT NAME: \_\_\_\_\_ SAIL #: \_\_\_\_\_

YACHT MAKE/MODEL: \_\_\_\_\_ LENGTH: \_\_\_\_\_ COLOR: \_\_\_\_\_

PHRF RATING: \_\_\_\_\_ US SAILING MEMBER # \_\_\_\_\_

FLEET: \_\_\_\_\_ (CRUISING FLEET or PERFORMANCE FLEET)

OWNER'S NAME: \_\_\_\_\_ PHONE: \_\_\_\_\_

SKIPPER'S NAME: \_\_\_\_\_ PHONE: \_\_\_\_\_

CELL PHONE: \_\_\_\_\_ FAX: \_\_\_\_\_

EMAIL: \_\_\_\_\_

MAILING ADDRESS WITH ZIP: \_\_\_\_\_

\_\_\_\_\_

EMERGENCY CONTACT: \_\_\_\_\_ PHONE: \_\_\_\_\_

VESSEL NORMALLY DOCKED AT: \_\_\_\_\_

The undersigned, for and on behalf of himself/herself, his/her guests, and the members of the crew of his/her yacht, hereby assumes all risk of accident and expressly agrees that the St. Augustine Yacht Club shall not be liable, under any circumstance, for any loss or injury to participants or others or the loss or damage to any yacht. The undersigned further agrees to indemnify and does hereby indemnify and hold the St. Augustine Yacht Club free and harmless under, from and against any and all losses, costs, damages, attorney's fees and liability of any kind or nature whatsoever growing out of or resulting from participation in any SAYC sponsored race.

SIGNED: \_\_\_\_\_ DATE: \_\_\_\_\_

Mail to: David Patrick  
c/o St. Augustine Yacht Club  
442 Ocean Vista Avenue  
St. Augustine, Florida 32080  
<mailto:sailing@staugustineyachtclub.com>