



THE MOONLIGHT RACE
1 August 2015
The Rudder Club of Jacksonville
8533 Malaga Avenue
Jacksonville Florida 32244
Notice of Race

1 RULES

1.1 The race will be governed by *The Racing Rules of Sailing* (RRS), the prescriptions of US SAILING, the rules of participating classes, and the scoring rules of the North American Portsmouth (NAPY) system.

1.2 Rule 41 is changed such that a boat accepting assistance under Fundamental Rule 1.1 is exempt from the provisions of RRS 41 - Outside Help. Capsized sailboats are encouraged to accept assistance as necessary.

2 ADVERTISING:

Advertising shall not be displayed.

3 ELIGIBILITY AND ENTRY

3.1 The regatta is open to boats of all classes.

3.2 Eligible boats may enter by completing the attached form and submitting it electronically or printing it and submitting it by facsimile or in person at the time of registration.

3.3 All boats will race in the North American Portsmouth class. Boats without a Portsmouth rating will be assigned a temporary rating by the Club Handicapper.

4 FEES: The entry fee is \$25.00. A \$5.00 discount applies to members of US SAILING. Rudder Club member entry-fee provisions apply.

5 SCHEDULE: One race is scheduled.

Registration: 1730 – 1830 Saturday 1 August 2015

Sailors Meeting: 1845

Warning signal for first class: 1900

Predicted Sunset: 2020

End of Civil Twilight: 2046.

Predicted Moonrise: 2116

Full Moon at moonrise will be at 98% illumination.

Predicted Moonset 2 August: 0906

6 SAILING INSTRUCTIONS

6.1 The sailing instructions will be available after 20 July 2015 and will be posted on the Official Bulletin Board on the North Wall of the Rudder Club and on the Rudder Club Web site at www.rudderclub.com

6.2 Changes to the Sailing Instructions will be posted on the Official Bulletin Board prior to 1900, 1 August

6.3 Oral changes to the Sailing Instructions may be made on the water and communicated to each boat prior to its warning signal.

7 VENUE: The racing area will be in the St. Johns River between the Buckman Bridge to the south and the Fuller Warren Bridge to the north as depicted on NOAA Chart 11492.

8 THE COURSE: The Course will be published in the Sailing Instructions or as changes thereto and signaled on the water by VHF or white board.

9 TIME LIMIT: The time limit shall be 3 hours for each class. Boats failing to finish within 45 minutes corrected time after the first boat finishes will be scored "Did not Finish."

10 SAFETY

10.1 All boats shall be equipped with functional navigation lights and sound producing devices which comply with the Inland Navigation Rules. Lights shall be displayed at all times between the hours of sunset (2019) and sunrise (0646). Failure to comply with this requirement is protestable. Spreader and foredeck lights are allowed.

10.2 All boats are reminded that under fundamental rule 4 "The responsibility for a boats decision to participate in a race or continue racing is hers alone."

10.3 Persons in charge with limited night navigation experience are cautioned to try and obtain an experienced crew.

10.4 It is strongly recommended that all on-deck and open cockpit crew wear a lifejacket equipped with a light and whistle. Boats should have a MOB marking function GPS handily situated on board.

10.5 Boats shall not impede the passage of a vessel which can safely navigate only within a narrow channel or commercial fishing vessels while fishing or vessels with restricted ability to maneuver. Boats impeding other vessels may be subject to protest and possible disqualification.

11 PRIZES: Results will be announced at the Rudder Club the next morning. First, second, and third place prizes will be awarded.

12 FURTHER INFORMATION

For further information please contact the Race Officer Adam Norwood at ahnorwood@att.net or the Rudder Club Race Office at raceoffice@rudderclub.com.



The Rudder Club of Jacksonville, Inc.
8533 Malaga Ave. Jacksonville, FL 32244
(904)264-4094
RACE REGISTRATION FORM
Moonlight Race

Person in Charge _____
 (See RRS 46)
 Address _____
 City/State/Zip _____
 Telephone _____
 Cell Phone _____
 Club Affiliation _____

Emergency Contact:

Name _____
 Telephone _____

Boat Name _____
 Sail Number _____
 Make/Model _____
 NAPY Code _____
 (See URL below)
 D-PN _____
 MMSI Number _____
 (If assigned. See: www.boatus.com/mmsi/)

Spinnaker/Non Spinnaker _____
 North American Portsmouth Yardstick – For more information see:

<http://www.ussailing.org/racing/offshore-big-boats/portsmouth-yardstick/>

For NAPY Code and Portsmouth Rating see:
<http://www.ussailing.org/racing/offshore-big-boats/portsmouth-yardstick/current-tables/>

Crew Names:

Agreement and Statement of Understanding

In consideration of the acceptance of my application to enter the Hangover Race, I understand and accept that serious accidents occasionally occur during yacht racing events and that participants in yacht racing occasionally sustain mortal or serious injuries and/or property damage as a consequence thereof. I knowingly assume the risks of yacht racing. It is my responsibility as the person in charge to obtain a signed release from each member of his or her crew before the race begins. I agree to abide by the rules, regulations and sailing instructions of the Hangover Race, the ISAF and the United States Sailing Association. I also agree to allow Video or photographs of my boat and crew to be used for advertising and promotional purposes. Minors must present a copy of this form signed by a parent or guardian before being allowed to race as a person in charge..

Signature Person in Charge _____ Date _____

Parent/Guardian's Signature _____ Date _____
 if person in charge is a minor

Portsmouth Modification Factors that apply _____

For mono hull see

<http://www.ussailing.org/racing/offshore-big-boats/portsmouth-yardstick/current-tables/modification-factors-iv/>

For Multihull see:

<http://www.ussailing.org/racing/offshore-big-boats/portsmouth-yardstick/current-tables/mh-modification-factors/>

For help contact the race office at raceoffice@rudderclub.com or 904-314-5237



THE MOONLIGHT RACE
1 August 2015
The Rudder Club of Jacksonville
8533 Malaga Avenue
Jacksonville, FL 32244

Sailing Instructions

1 RULES

- 1.1 The race will be governed by The Racing Rules of Sailing (RRS), the prescriptions of US SAILING, and the scoring rules of the North American Portsmouth (NAPY) system.
- 1.2 Racing Rule 41 is changed such that a boat accepting assistance under Fundamental Rule 1.1 is exempt from the provisions of RRS 41 - Outside Help. Capsized sailboats are encouraged to accept assistance as necessary.

2 NOTICES TO COMPETITORS

Notices to competitors will be posted on the official notice board on the north exterior wall of the Rudder Club.

3 CHANGES IN THE SAILING INSTRUCTIONS

- 3.1 Any change to the Sailing Instructions will be posted on the official notice board prior to 1900, 1 August 2015. Time permitting Changes may be posted on the official Rudder Club Web site at www.rudderclub.com.
- 3.2 Oral changes to the Sailing Instructions may be made on the water and communicated to each boat prior to its warning signal.

4 SIGNALS MADE ASHORE

- 4.1 Signals made ashore will be displayed from the flag pole located on the north side of the Rudder Club.
- 4.2 When flag AP is displayed ashore, "one minute" is replaced with "not less than 45 minutes" in the race signal AP. Boats are requested not to leave the harbor when this signal is made.

5 SCHEDULE OF RACE

- 5.1 One race is scheduled.
Registration: 1730 – 1830, 1 August.
Sailors Meeting: 1845
Warning signal for first class: 1950
Predicted Sunset: 2020
Predicted Moonrise: 2116
Full Moon -- at moonrise, the moon will be at 98% illumination.
End of Civil Twilight 2046
Predicted Moonset: 0906, 2 August.

6 CLASS FLAGS

There will be one class and one start using numeral pennant 1.



7 RACING AREA

The racing area will be in the St. Johns River between the Buckman Bridge to the south and the Fuller Warren Bridge to the north as depicted on NOAA Chart 11492.

8 THE COURSE

The course will be posted on the official bulletin board as a Notice to Competitors. The course will also be signaled on a white board displayed on the committee boat using the designators assigned river marks as depicted in addendum "A."

9 MARKS

- 9.1 Marks of the course, except for start and finish, will be government navigation markers or FCSA River Marks as depicted in Addendum "A." Mark E is a FCSA river mark and is a yellow inflated cylinder.

10 START

The starting line will be in the vicinity of race mark "E" and will be between an orange flag flown on the Race Committee Boat and an orange mark set toward the left side of the course from the RC boat.

11 THE FINISH

The finish line will be extending from an orange flag on the end of the Rudder Club pier and perpendicular (90°) to the final leg of the race course.

12 SCORING AND TIME LIMIT

12.1 Boats will be scored using the Portsmouth North America System.

12.2 Time Limit

The time limit shall be 3 hours for each class. Yachts failing to finish within 45 minutes corrected time after the first boat finishes will be scored "Did not Finish." This changes rule A4.2

13 PROTESTS AND REQUESTS FOR REDRESS

13.1 Protests and requests for redress shall be written on forms available at the Rudder Club Race Office. They shall be filed with the Race Officer.

13.2 The protest time limit is 90 minutes after the last boat has finished.

13.3 RRS Section D of Appendix T, Arbitration, is in effect.

13.4 Protest and Redress hearings will be conducted at 1000 Sunday Morning, 2 August.

14 SAFETY

14.1 Boats intending to race shall sail past the stern of the committee boat on starboard tack prior to their warning signal and check in. Boats not finishing shall ensure the race committee knows they have dropped from the race. Failure to do so could result in an expensive USCG and FFWC Search and Rescue Operation. Offenders may be required to pay that cost or some portion thereof.

14.2 All competitors are required to conform to the U.S. Coast Guard regulations and the RRS concerning personal floatation devices and other required equipment. All boats are reminded that under fundamental rule 4 "The responsibility for a boat's decision to participate in a race or to continue racing is hers alone.

14.3 Boats shall not impede the passage of a vessel which can safely navigate only within a narrow channel. Boats interfering with other vessels may be subject to protest by the Race Committee or contestants and possible disqualification.

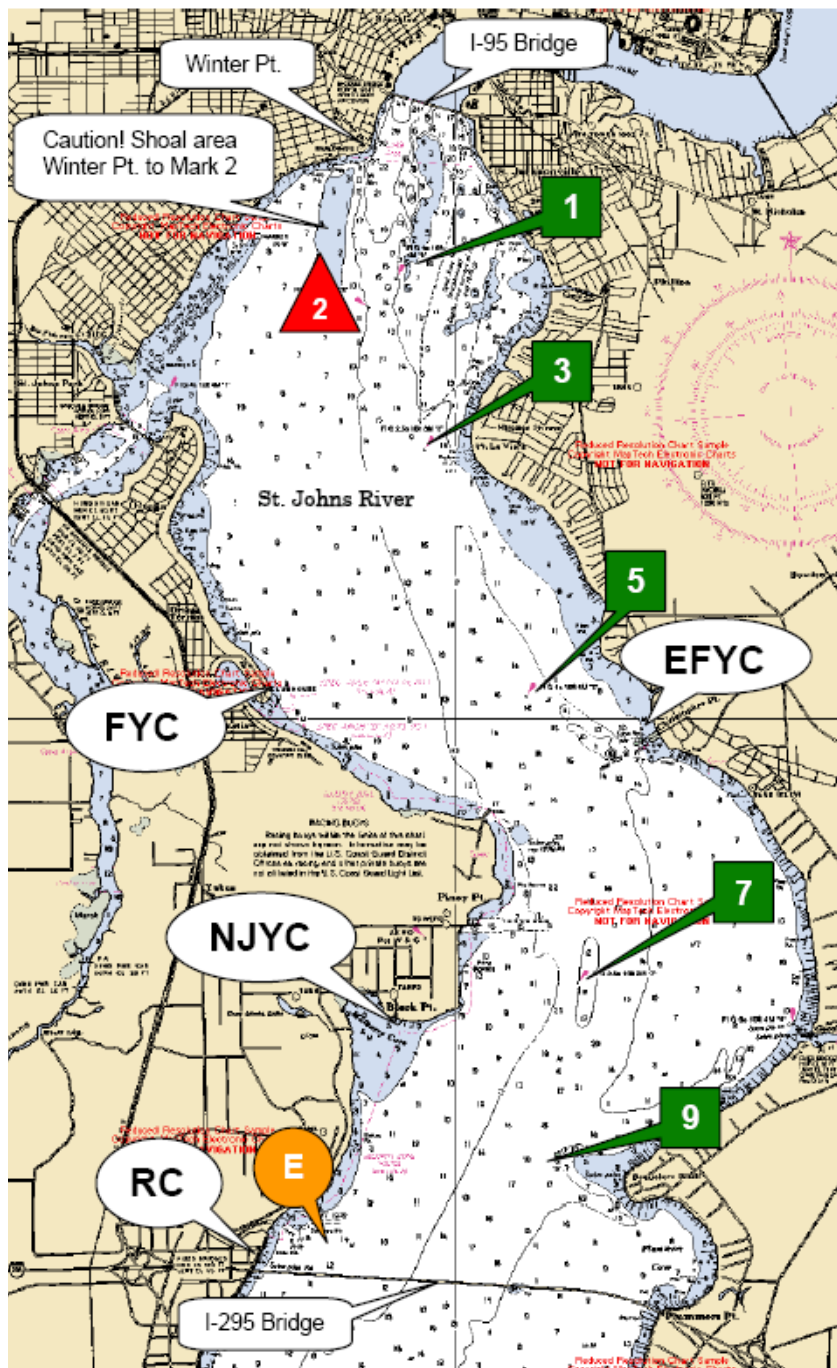
14.4 In accordance with Rule 42.3(h), providing no significant advantage is gained, a boat may employ propulsion using an engine or other method to remain clear of a non-racing vessel when required by Inland Rules.

14.5 All boats shall be equipped with functional navigation lights and sound producing device which comply with the Inland Navigation Rules. Lights shall be displayed at all times between the hours of sunset (2020) and sunrise (0645). Failure to comply with this requirement is protestable. Spreader and foredeck lights are allowed.

14.6 Any boat whose lights fail to illuminate in accordance with the rules shall proceed immediately to the Rudder Club or their home dock. They shall notify the race committee and sound restricted visibility signals in accordance with COLREGS while proceeding (one 4- 6 second blast every two minutes).

15 PRIZES

PRIZES: Results will be posted at the Rudder Club by 1100 2 August. First, second, and third place prizes will be awarded.



Race Marks	GPS Position	Range and Bearing between I			
		From	To	Range n.m.	Beari Mag.
1	N30° 17.798' W81° 40.440'	E	7	2.3	048°
		E	9	1.5	073°
3	N30° 16.723' W81° 40.219'	1	3	1.1	175°
		1	5	2.8	168°
5	N30° 15.013' W81° 39.470'	3	1	1.1	355°
		3	5	1.7	163°
7	N30° 13.312' W81° 39.078'	3	7	3.7	169°
		5	1	2.8	348°
9	N30° 12.272' W81° 39.241'	5	3	1.7	343°
		5	7	1.9	175°
E	N30° 11.700' W81° 40.900'	5	9	2.9	181°
		7	E	2.3	229°
E	N30° 11.700' W81° 40.900'	7	1	4.6	350°
		7	3	3.6	349°
E	N30° 11.700' W81° 40.900'	7	5	1.9	355°
		7	9	1.1	193°
E	N30° 11.700' W81° 40.900'	9	E	1.5	253°
		9	5	2.9	001°
E	N30° 11.700' W81° 40.900'	9	7	1.1	013°

Note: Mark "E" is no longer a fixed mark. If designated as a mark of the course it will be replaced by an inflatable yellow mark.