

# Spring Series 2015

*The Rudder Club of Jacksonville*  
8533 Malaga Ave.  
Jacksonville, FL 32244

## NOTICE OF RACE

### 1. RULES:

- 1.1 This series will be governed by the rules as defined in *The Racing Rules of Sailing*.
- 1.2 This NOR applies for all races in the Rudder Club Series races for the year 2015
- 1.3 Racing rule A9 is changed by NOR 8.2.

### 2. ADVERTISING: Advertising shall not be displayed

### 3. ELIGIBILITY AND ENTRY:

- 3.1. The races are open to all boats of all classes.
- 3.2. Eligible boats may enter by completing the First Coast Sailing Association standard entry form for yacht racing in person at the time of registration for each series race. Non Rudder Club member's entry fee is \$10.00.
- 3.3. Anticipated classes are One Design, Portsmouth Mono-hull, and Portsmouth Multi-hull. Portsmouth Mono-hull includes cruisers.
- 3.4. A minimum of three registered boats is necessary to constitute a class.

### 4. SCHEDULE: Schedule of Events for each Posted Race Date:

- 4.1 One design series races are scheduled as follows. Changes of scheduled dates will be promulgated by a change to this NOR.

Spring Series #1 - Sat. 1/10/2015  
Spring Series #2 - Sat. 1/24/2015  
Spring Series #3 - Sat. 2/07/2015  
Spring Series #4 - Sat. 2/21/2015  
Spring Series #5 - Sun. 3/08/2015  
Spring Series #6 - Sun. 3/22/2015  
Spring Series Make-up Sun. 3/29/2015

Fall Series #1 - Sat. 09/12/2015  
Fall Series #2 - Sat. 09/26/2015  
Fall Series #3 - Sun. 10/04/2015  
Fall Series #4 - Sat. 10/17/2015  
Fall Series #5 - Sun. 10/25/2015  
Fall Series #6 - Sat. 11/21/2015  
Fall Series Make-up Sun. 11/22/2015

- 4.2 Registration: 1200 to 1245
- 4.3 Competitors Meeting: 1300
- 4.4 Warning Signal for First Class: 1355
- 4.5 There will be a minimum of one race for the One Design and Portsmouth classes;

others races will follow until terminated by the race committee. In accordance with US Sailing prescription 5.6, flag "A" displayed, with no sound, while boats are finishing means "No more racing today."

### 5 SAILING INSTRUCTIONS: The Sailing Instructions will be posted on the Rudder Club website, the Rudder Club official bulletin board on the north exterior wall of the club and at registration.

### 6 VENUE: The racing area will be in the St. Johns River between the Buckman Bridge to the South and the Fuller Warren Bridge to the North.

### 7 COURSE: Course sailed will be as shown in an addendum to the Sailing Instructions and displayed on a white board on the committee boat.

### 8 SCORING:

8.1 A boat's total score for the day's racing will be the sum of her score for all races on that day. One race is necessary to constitute a daily series.

8.2 Scoring for each series will be based on the US SAILING prescription for scoring a long series

[http://raceadmin.ussailing.org/Rules/Long\\_Series.htm](http://raceadmin.ussailing.org/Rules/Long_Series.htm). The HIGH-POINT PERCENTAGE SCORING SYSTEM will apply. The aggregate score for each day counts as one score for the series. In order to qualify a boat must have received a score in seventy five percent of scheduled series races. This changes rule A9.

8.3 Each series will be scored individually.

8.4 **NOTICE TO COMPETITORS:** Notices to competitors will be posted on the Official Bulletin Board located on the Rudder Club's North exterior wall.

8.5 **PRIZES:** Prizes will be awarded after racing concludes on the final day of the each series.

8.6 **Disclaimer of Liability:** Sailing is an activity that has an inherent risk of damage and injury. Competitors in these series are participating entirely at their own risk. See RRS 4, Decision to Race. Completion and submission of a registration form for these

races constitute an acceptance of an agreement to abide by the Racing Rules of Sailing, this Race Notice and the Sailing Instructions.

- 9 FURTHER INFORMATION** For further information contact Dick Allsopp: 904-278-0329, [raceoffice@rudderclub.com](mailto:raceoffice@rudderclub.com) or the

Rudder Club, 8533 Malaga Ave.,  
Jacksonville, FL 32244, 904-264-4094,  
[office@rudderclub.com](mailto:office@rudderclub.com).



The Rudder Club of Jacksonville, Inc.  
 8533 Malaga Ave. Jacksonville, FL 32244  
 (904)264-4094

**RACE REGISTRATION FORM**  
**Series Races**

Date \_\_\_\_\_

Race \_\_\_\_\_

Date of Race \_\_\_\_\_

Person in Charge \_\_\_\_\_

Boat Name \_\_\_\_\_

(See RRS 46)

Address \_\_\_\_\_

Sail Number \_\_\_\_\_

City/State/Zip \_\_\_\_\_

Boat Make/Model \_\_\_\_\_

Telephone \_\_\_\_\_

MMSI If installed \_\_\_\_\_

Cell Phone \_\_\_\_\_

One Design Class: \_\_\_\_\_

E-mail Address \_\_\_\_\_

**Note:** NAPY = North American Portsmouth

Yardstick

**Emergency Contact:**

See:

Name \_\_\_\_\_

<http://www.ussailing.org/racing/offshore-big-boats/portsmouth-yardstick/current-tables/>

Address \_\_\_\_\_

City/St/Zip \_\_\_\_\_

Telephone \_\_\_\_\_

NAPY Class: \_\_\_\_\_

**Yacht Club Affiliation** \_\_\_\_\_

NAPY Code: \_\_\_\_\_

Cruising boats look under Offshore Classes or for help contact the Race Office at [raceoffice@rudderclub.com](mailto:raceoffice@rudderclub.com) or 904-314-5237

**Crew Names:**

\_\_\_\_\_  
 \_\_\_\_\_  
 \_\_\_\_\_

\_\_\_\_\_  
 \_\_\_\_\_  
 \_\_\_\_\_

**Agreement and Statement of Understanding**

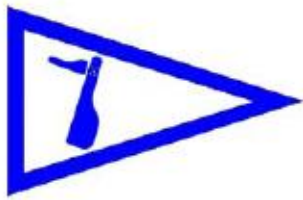
I understand that sailing is an activity that has an inherent risk of damage and injury and that my decision to race in this event is entirely at my own risk. See RRS 4, Decision to Race. Prior to racing I will have obtained a signed release from each member of my crew. I further agree to abide by the rules, regulations and sailing instructions of the Series Races, the ISAF and the United States Sailing Association. I certify that I am the "person in charge" of this boat in accordance with RRS 46.

To the fullest extent permitted by law, I hereby waive any rights I may have to sue the race organizers (organizing authority, race committee, protest committee, host club, sponsors, or any other organization or official) involved with the event with respect to personal injury or property damage suffered by myself or my crew as a result of our participation in this event and hereby release the race organizers from any liability for such injury or damage.

NOTE: Minors must present a copy of this form counter-signed by a parent or guardian before being allowed to race. "

Signature Person in Charge \_\_\_\_\_ Date \_\_\_\_\_

Parent/Guardian's Signature \_\_\_\_\_ Date \_\_\_\_\_  
 if person in charge is a minor



# Series Races 2015

*The Rudder Club of Jacksonville*  
8533 Malaga Ave.  
Jacksonville, FL 32244

## SAILING INSTRUCTIONS

### 1. RULES:

- 1.1 This series of races is governed by the rules as defined in *The Racing Rules of Sailing*.
- 1.2 These Sailing Instructions apply for all races in the Rudder Club Series Races for the year 2014.
- 1.3 Racing Rules 35 and A4.1 are changed by SI 12.
- 1.4 Racing Rule A9 is changed by SI 14

**2 NOTICE TO COMPETITORS:** Notices to competitors will be posted on the Official Bulletin Board located on the Rudder Club's North exterior wall.

**3 CHANGES IN THE SAILING INSTRUCTIONS:**  
Any changes to the Sailing Instructions will be posted on the Rudder Club web site and on the Official Bulletin Board located on the Rudder Club's North exterior wall no later than 0945 on the day of the race. Oral changes to the Sailing Instructions may be communicated to each boat prior to its warning signal and are allowed only on the water.

### 4 SIGNALS MADE ASHORE:

- 4.1 Signals made ashore will be displayed from the flag pole located on the North side of the Rudder Club.
- 4.2 The warning signal for the first class will be made not less than 30 minutes after Code Flag AP is lowered.

### 5 SCHEDULE OF RACES:

- 5.1 One design series races are scheduled as follows.  
Changes of scheduled dates will be promulgated by a change to these Sailing Instructions

Spring Series #1 - Sat. 01/10/2015  
Spring Series #2 - Sat. 01/24/2015  
Spring Series #3 - Sat. 02/07/2015  
Spring Series #4 - Sat. 02/21/2015  
Spring Series #5 - Sun.03/08/2015  
Spring Series #6 - Sun.03/22/2015  
Spring Series Make-up Sun. 03/29/2015

Fall Series #1 - Sat. 09/12/2015  
Fall Series #2 - Sat. 09/26/2015  
Fall Series #3 - Sun.10/04/2015  
Fall Series #4 - Sat. 10/17/2015  
Fall Series #5 - Sun.10/25/2015  
Fall Series #6 - Sat. 11/21/2015  
Fall Series Make-up Sun. 11/22/2015

Registration: 1200 to 1245

- 5.2 Competitors Meeting: 1300
- 5.3 Warning Signal for First Class: 1355

5.4 There will be a minimum of one race for the One Design and Portsmouth classes; other races will follow until racing is terminated by the race committee. In accordance with US Sailing prescription 5.6, flag "A" displayed, with no sound, while boats are finishing means "No more racing today."

### 6 CLASS FLAGS:

Portsmouth Multi	P1	
Portsmouth Mono	P2	
Flying Scot	P3	
Hobie 16	P4	
Snipe	P5	
420	P6	
Lazer	P8	
Pico	P9	
Spare	P0	

### 7 RACING AREA

The racing area will be in the St. Johns River between the Buckman Bridge to the south and the Fuller Warren Bridge to the north as depicted on NOAA Chart 11492.

### 8 COURSES:

- 8.1. One Design. Courses for each class will be as shown in addendum A or B and designated for each class on a white board on the Committee Boat.
- 8.2 Portsmouth Courses may be one design courses from addendum A or one using river marks from Addendum B. Addendum B courses will be displayed on the Committee Boat using the Mark designators as displayed on the addendum.
- 8.3 If the Race Committee sets a gate instead of a Leeward Mark, boats shall sail between marks forming the gate from the direction of the last mark and round either the port mark leaving it to port or the starboard mark leaving it to starboard. If no gate is set, and a single leeward mark is used, boats shall leave this mark to port. The Race Committee may also elect to set an offset

mark with the distance course windward mark. If set both the windward and the offset mark will be rounded to port

## **9 MARKS:**

9.1 Marks may be either government navigation marks as Depicted on NOAA Chart 11492 or navigation marks and FCSA marks as depicted on Addendum B. Government Marks will be designated by their number as appearing on the chart. If using River Marks (Addendum B), in addition to the marks shown, an inflatable orange mark may be set to windward and designated "X" (XRAY).

9.2 **Mark Descriptions** – Marks will be as follows:

Mark 1Short – Inflated Yellow Cylinder

Mark 2S – Inflated Yellow Cylinder

Mark 2P – Inflated Yellow Cylinder (2 Port)

Mark 1 – Inflated Orange Cylinder

Mark 1 Offset – Inflated yellow trapezoid

## **10 START**

The starting line will be between an orange flag flown on the Race Committee Boat and a red inflatable sphere set to the left side of the Committee Boat relative to the first course. In the absence of a Race Officer (RO) or assistants, the RO or competitors may through their fleet representative opt to conduct a Gate (Rabbit) Start in accordance with the procedures set forth in Addendum C.

## **11 FINISH**

The finish line will be between an orange flag on the committee boat and an orange inflatable sphere set to the left side of the Committee Boat relative to the final leg. The race committee may opt to use the same line for finishing as the starting line. This will be announced in a Notice to Competitors posted on the bulletin board.

## **12 TIME LIMIT**

The time limit for the first yacht in each starting class to finish is 90 minutes from her start. Yachts failing to finish within 30 minutes (corrected time as applicable) after the first yacht in her class will be scored "DNF." This changes Rule 35 and A4.1.

## **13 PROTESTS**

13.1 Protest forms are available at the Rudder Club Race Office.

13.2 For each class the protest time is two hours after the last boat has finished the last race of the day.

13.3 Section D of Appendix T, Arbitration, is in effect.

## **14 SCORING**

14.1 A boat's total score for the day's racing will be the sum of her score for all races on that day. One race is necessary to constitute a daily series.

14.2 Scoring for each series will be based on the US SAILING prescription for scoring a long series [http://raceadmin.ussailing.org/Rules/Long\\_Series.htm](http://raceadmin.ussailing.org/Rules/Long_Series.htm). This prescription applies for the 2013 rules as well. The HIGH-POINT PERCENTAGE SCORING SYSTEM will apply. The aggregate score for each day counts as one score for the series. In order to qualify a boat must have received a score in seventy five percent of scheduled series races. This changes rule A9.

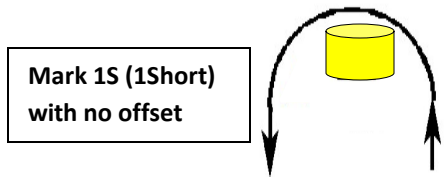
14.3 Each series will be scored individually.

## **15 SAFETY REGULATIONS**

- 15.1 Boats shall attempt to check in with the Race Committee by sailing past on the non-course side prior to their class Warning Signal.
- 15.2 Boats withdrawing from a race prior to finishing shall make every effort to ensure that Race Committee is notified that they have dropped out
- 15.3 All competitors are required to conform to the U.S. Coast Guard regulations and the RRS concerning personal floatation devices and other required equipment.
- 15.4 Yachts shall not impede the passage of a vessel which can safely navigate only within a narrow channel, and give way to commercial fishing vessels while fishing or vessels with restricted ability to maneuver.
- 15.5 In accordance with Rule 42.3(h), providing no significant advantage is gained, a boat may employ propulsion using an engine or other method to remain clear of a non-racing vessel when required by Inland Rules.

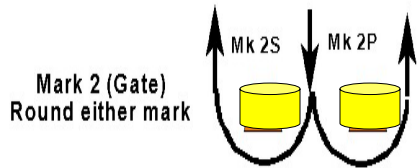
**16 PARTICIPATION:** Sailing is an activity that has an inherent risk of damage and injury. Competitors in this series are participating entirely at their own risk. See RRS 4, Decision to Race. Completion and submission of a registration form for these races constitute an acceptance of and agreement to abide by the Racing Rules of Sailing, the Race Notice and these Sailing Instructions.

**Series Buoy Courses (Attachment A)**

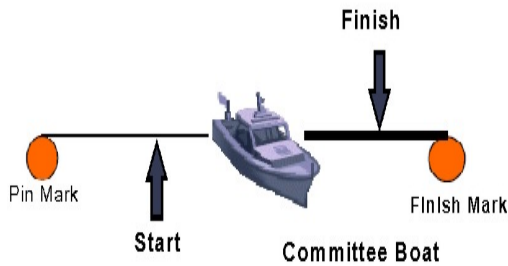


Mark 1S (1Short)  
with no offset

Not to Scale



Mark 2 (Gate)  
Round either mark

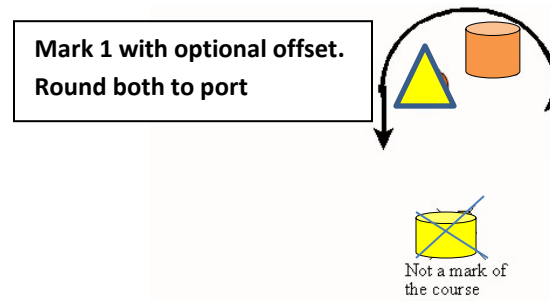


**Windward Leeward Short**

**WS**

**Course: Start, 1S, 2P or 2S, 1S, Finish**

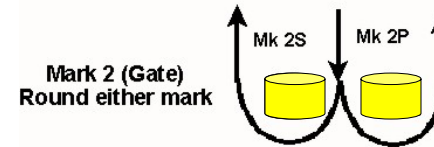
**Attachment A**



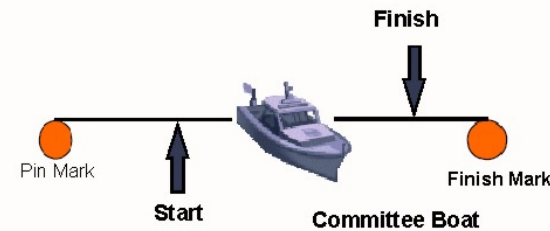
Mark 1 with optional offset.  
Round both to port

Not a mark of  
the course

Not to Scale



Mark 2 (Gate)  
Round either mark

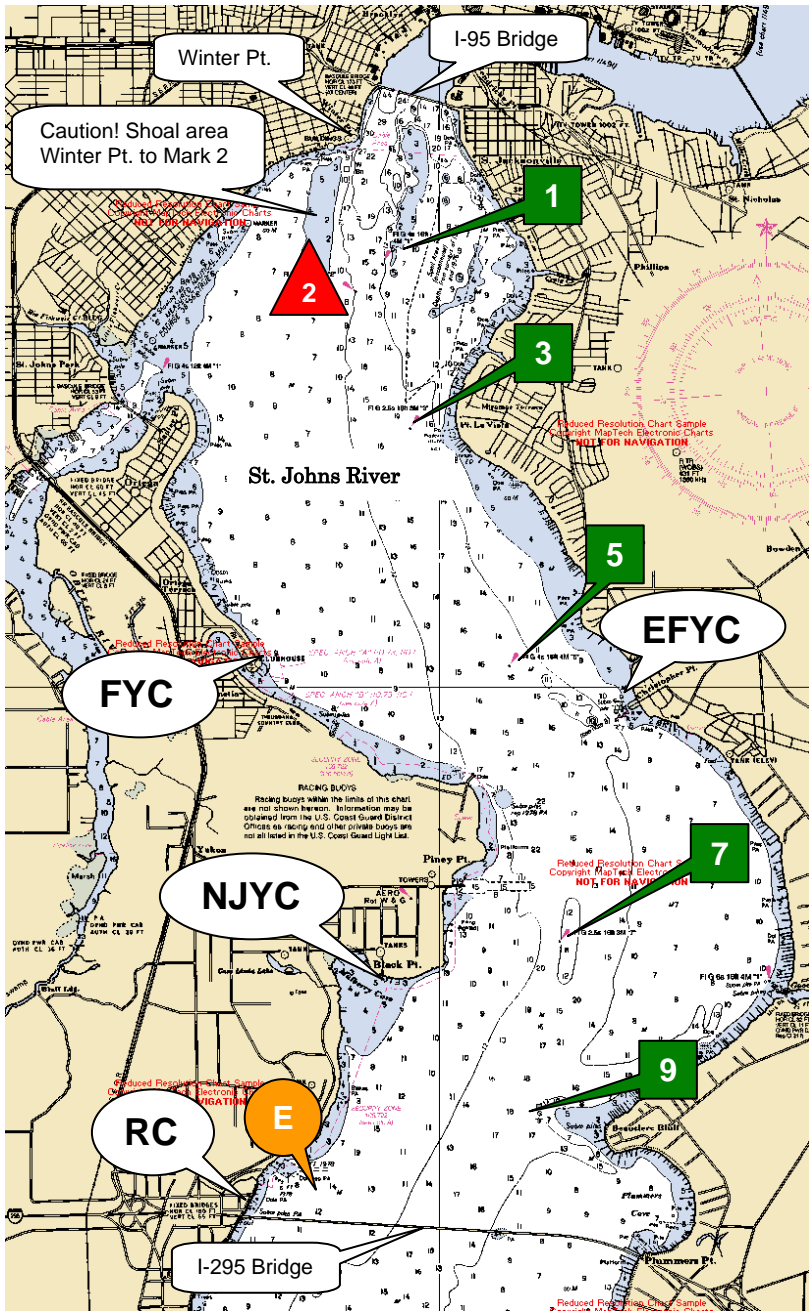


**Windward Leeward Long**

**WL**

**Course: Start, 1, 2P or 2S, 1, Finish**





Race Marks  
GPS Position

Range and Bearing between Marks

1

N30° 17.798'  
W81° 40.440'

From	To	Range n.m.	Bearing Mag.
E	7	2.3	048°
E	9	1.5	073°

3

N30° 16.723'  
W81° 40.219'

1	3	1.1	175°
1	5	2.8	168°

5

N30° 15.013'  
W81° 39.470'

3	1	1.1	355°
3	5	1.7	163°
3	7	3.7	169°

7

N30° 13.312'  
W81° 39.078'

5	1	2.8	348°
5	3	1.7	343°
5	7	1.9	175°
5	9	2.9	181°

9

N30° 12.272'  
W81° 39.241'

7	E	2.3	229°
7	1	4.6	350°
7	3	3.6	349°
7	5	1.9	355°
7	9	1.1	193°

E

N30° 11.700'  
W81° 40.900'  
(PA)

9	E	1.5	253°
9	5	2.9	001°
9	7	1.1	013°

**Note:** Mark E is no longer a permanent mark but may be substituted for by a yellow inflated cylinder. It will be referred to as "E" on course boards using river marks.