



**THE MOONLIGHT RACE**  
**August 2 2014**  
***The Rudder Club of Jacksonville***  
**8533 Malaga Avenue**  
**Jacksonville Florida 32244**  
**Notice of Race**

**1 RULES**

- 1.1** The race will be governed by *The Racing Rules of Sailing* (RRS), the prescriptions of US SAILING, the rules of participating classes, and the PHRF rules of the First Coast Sailing Association except that Time on Time Scoring will be used.
- 1.2** Rule 41 is changed such that a boat accepting assistance under Fundamental Rule 1.1 is exempt from the provisions of RRS 41 - Outside Help. Capsized sailboats are encouraged to accept assistance as necessary.

**2 ADVERTISING:**

Advertising shall not be displayed.

**3 ELIGIBILITY AND ENTRY**

- 3.1** The regatta is open to boats of all classes.
- 3.2** Eligible boats may enter by completing the attached form and submitting it electronically or printing it and submitting it by facsimile or in person at the time of registration. The registration form is also available at <http://www.rudderclub.com/>
- 3.3** Anticipated classes are PHRF Spinnaker, PHRF Cruiser, PHRF Non-Spinnaker, Portsmouth Monohull, Portsmouth Multihull and Flying Scot. To constitute a class there must be three or more boats. Additional classes of three or more boats will be accommodated.
- 4 FEES:** The entry fee is \$25.00. A \$5.00 discount applies to members of US SAILING. Rudder Club member entry-fee provisions apply.

**5 SCHEDULE:** One race is scheduled.

Registration: 1730 – 1830 Saturday 2 August 2014  
Sailors Meeting: 1845  
Warning signal for first class: 1950  
Predicted Sunset: 2019  
Predicted Moonrise: 1235  
First Quarter Moon at race start will be at 44° elevation (38% illumination) and setting to the west  
End of Civil Twilight 2046. First Quarter Moon at 43.0° elevation.  
Predicted Moonset: 0008 3 August

**6 SAILING INSTRUCTIONS**

- 6.1** The sailing instructions will be available after 15 July

2014 and will be posted on the Official Bulletin Board on the North Wall of the Rudder Club and on the Rudder Club Web site at [www.rudderclub.com](http://www.rudderclub.com)

- 6.2** Changes to the Sailing Instructions will be posted on the Official Bulletin Board prior to 1900, 2 August
- 6.3** Oral changes to the Sailing Instructions may be made on the water and communicated to each boat prior to its warning signal.
- 7 VENUE:** The racing area will be in the St. Johns River between the Buckman Bridge to the south and the Fuller Warren Bridge to the north as depicted on NOAA Chart 11492.
- 8 THE COURSES:** Courses will be published in the Sailing Instructions or as changes thereto and signaled on the water by VHF or white board.
- 9 TIME LIMIT:** The time limit shall be 3 hours for each class. Boats failing to finish within 45 minutes corrected time after the first yacht of their class finishes will be scored "Did not Finish."

**10 SAFETY**

- 10.1** All boats shall be equipped with functional navigation lights and sound producing devices which comply with the Inland Navigation Rules. Lights shall be displayed at all times between the hours of sunset (2019) and sunrise (0646). Failure to comply with this requirement is protestable. Spreader and foredeck lights are allowed.
- 10.2** All boats are reminded that under fundamental rule 4 "The responsibility for a boats decision to participate in a race or continue racing is hers alone."
- 10.3** There will be effectively little moonlight for this race. Persons in charge with limited night navigation experience are cautioned to try and obtain an experienced crew.
- 10.4** It is strongly recommended that all on-deck and open cockpit crew wear a lifejacket equipped with a light and whistle. Boats should have a MOB marking function GPS handily situated on board.
- 10.5** Boats shall not impede the passage of a vessel which can safely navigate only within a narrow channel or commercial fishing vessels while fishing or vessels with restricted ability to maneuver. Boats impeding other vessels may be subject to protest and possible disqualification.

**11 PRIZES:** Results will be announced at the Rudder Club the next morning. First, second, and third place prizes will be awarded in each class of five or more boats. First and second place prizes will be awarded for classes of 4 boats. First place prizes will be awarded for classes of 3 boats.

**12 FURTHER INFORMATION**

For further information please contact the Race Officer Adam Norwood at [ahnorwood@att.net](mailto:ahnorwood@att.net) or the Rudder Club Race Office at [raceoffice@rudderclub.com](mailto:raceoffice@rudderclub.com) .



The Rudder Club of Jacksonville, Inc.  
 8533 Malaga Ave. Jacksonville, FL 32244  
 (904)264-4094

**RACE REGISTRATION FORM**  
**Moonlight Race**

**Person in Charge:** \_\_\_\_\_  
 (See RRS 46)

**Boat Name** \_\_\_\_\_

Address: \_\_\_\_\_

Boat Make/Model \_\_\_\_\_

City/State/Zip \_\_\_\_\_

Sail Number \_\_\_\_\_

Telephone \_\_\_\_\_

MMSI If installed \_\_\_\_\_

Cell Phone \_\_\_\_\_

**Class/Rating (Portsmouth or PHRF):**

E-mail Address \_\_\_\_\_

Class \_\_\_\_\_

**Emergency Contact:**

Portsmouth Monohull \_\_\_\_\_ / \_\_\_\_\_

Name \_\_\_\_\_

Portsmouth Multihull \_\_\_\_\_ / \_\_\_\_\_

Address \_\_\_\_\_

PHRF Spinnaker \_\_\_\_\_ / \_\_\_\_\_

City/St/Zip \_\_\_\_\_

PHRF Non-Spinnaker \_\_\_\_\_ / \_\_\_\_\_

Telephone \_\_\_\_\_

PHRF/Cruiser \_\_\_\_\_ / \_\_\_\_\_

**Yacht Club Affiliation** \_\_\_\_\_

**Crew Names:**

\_\_\_\_\_  
 \_\_\_\_\_  
 \_\_\_\_\_

\_\_\_\_\_  
 \_\_\_\_\_  
 \_\_\_\_\_

**Agreement and Statement of Understanding**

In consideration of the acceptance of my application to enter the Moonlight Race, I understand and accept that serious accidents occasionally occur during yacht racing events and that participants in yacht racing occasionally sustain mortal or serious injuries and/or property damage as a consequence thereof. I knowingly assume the risks of yacht racing. It is my responsibility as the person in charge to obtain a signed release from each member of his or her crew before the race begins. I agree to abide by the rules, regulations and sailing instructions of this race, the ISAF and the United States Sailing Association. Minors must present a copy of this form signed by a parent or guardian before being allowed to enter as a person in charge.race.

Signature Person in Charge \_\_\_\_\_ Date \_\_\_\_\_  
 (Skipper)

Parent/Guardian's Signature \_\_\_\_\_ Date \_\_\_\_\_  
 if person in charge is a minor



**THE MOONLIGHT RACE**  
**2 August 2014**  
***The Rudder Club of Jacksonville***  
8533 Malaga Avenue  
Jacksonville, FL 32244

**Sailing Instructions**

**1 RULES**

- 1.1 The race will be governed by The Racing Rules of Sailing (RRS), the prescriptions of US SAILING, the rules of participating classes, and the PHRF rules of the First Coast Sailing Association except that Time on Time Scoring will be used.
- 1.2 Racing Rule 41 is changed such that a boat accepting assistance under Fundamental Rule 1.1 is exempt from the provisions of RRS 41 - Outside Help. Capsized sailboats are encouraged to accept assistance as necessary.

**2 NOTICES TO COMPETITORS**

Notices to competitors will be posted on the official notice board on the north exterior wall of the Rudder Club.

**3 CHANGES IN THE SAILING INSTRUCTIONS**

- 3.1 Any change to the Sailing Instructions will be posted on the official notice board prior to 1900, 2 August 2014. Time permitting Changes may be posted on the official Rudder Club Web site at [www.rudderclub.com](http://www.rudderclub.com).
- 3.2 Oral changes to the Sailing Instructions may be made on the water and communicated to each boat prior to its warning signal.

**4 SIGNALS MADE ASHORE**

- 4.1 Signals made ashore will be displayed from the flag pole located on the north side of the Rudder Club.
- 4.2 When flag AP is displayed ashore, "one minute" is replaced with "not less than 45 minutes" in the race signal AP. Boats are requested not to leave the harbor when this signal is made.

**5 SCHEDULE OF RACE**

- 5.1 **SCHEDULE:** One race is scheduled.  
Registration: 1730 – 1830 Saturday 2 August 2014  
Sailors Meeting: 1845  
Warning signal for first class: 1950

Predicted Sunset: 2019  
Predicted Moonrise: 1235  
First Quarter Moon at race start will be at 45° elevation (38% illumination) and setting to the west  
End of Civil Twilight 2046. First Quarter Moon at 43.0° elevation.  
Predicted Moonset: 0008 3 August

**6 CLASS FLAGS**

- 6.1 Class flags will be the International Numeral Pennants as depicted under Race Signals in the RRS.

Class		Pennant
Multihull Open	P1	
PHRF Spinnaker	P2	
PHRF Non-spinnaker	P3	
Flying Scot	P4	
Monohull Open	P5	
Spare (as assigned)	P6	
Spare (as assigned)	P8	
Spare (as assigned)	P9	
Spare (as assigned)	P0	

- 6.2 Class assignments will be posted as a Notice to Competitors.

**7 RACING AREA**

The racing area will be in the St. Johns River between the Buckman Bridge to the south and the Fuller Warren Bridge to the north as depicted on NOAA Chart 11492.

**8 THE COURSE**

The course will be posted on the official bulletin board as a Notice to Competitors.

The course will also be signaled on a white board displayed on the committee boat using the designators assigned river marks as depicted in addendum "A."

## **9 MARKS**

- 9.1 Marks of the course, except for start and finish, will be government navigation markers or FCSA River Marks as depicted in Addendum "A." Mark E is a FCSA river mark and is a yellow inflated cylinder.

## **10 START**

- 10.1 The starting line will be between an orange flag flown on the Race Committee Boat and a yellow mark set toward the left side of the course from the RC boat.
- 10.2 Boats whose warning signal has not been made shall avoid the starting area during the starting sequence for other races.

## **11 THE FINISH**

The finish line will be between an orange flag on committee boat and River Mark "E" as shown in addendum "A."

## **12 SCORING AND TIME LIMIT**

- 12.1 Portsmouth classes will be scored using the Portsmouth North America System. PHRF boats will be scored using PHRF TOT.
- 12.2 Time Limit  
The time limit shall be 3 hours for each class. Yachts failing to finish within 45 minutes corrected time after the first yacht of their class finishes will be scored "Did not Finish." This changes rule A4.2

## **13 PROTESTS AND REQUESTS FOR REDRESS**

- 13.1 Protests and requests for redress shall be written on forms available at the Rudder Club Race Office. They shall be filed with the Race Officer.
- 13.2 The protest time limit is 90 minutes after the last boat has finished.
- 13.3 Protest and Redress hearings will be conducted at 1000 Sunday Morning ~~17 July~~ August 03.

## **14 SAFETY**

- 14.1 Boats intending to race shall sail past the stern of the committee boat on starboard tack prior to their warning signal and check in. Boats not finishing shall ensure the race committee knows they have dropped from the race. Failure to do so could result in an expensive USCG and FFWC Search and Rescue Operation. Offenders may be

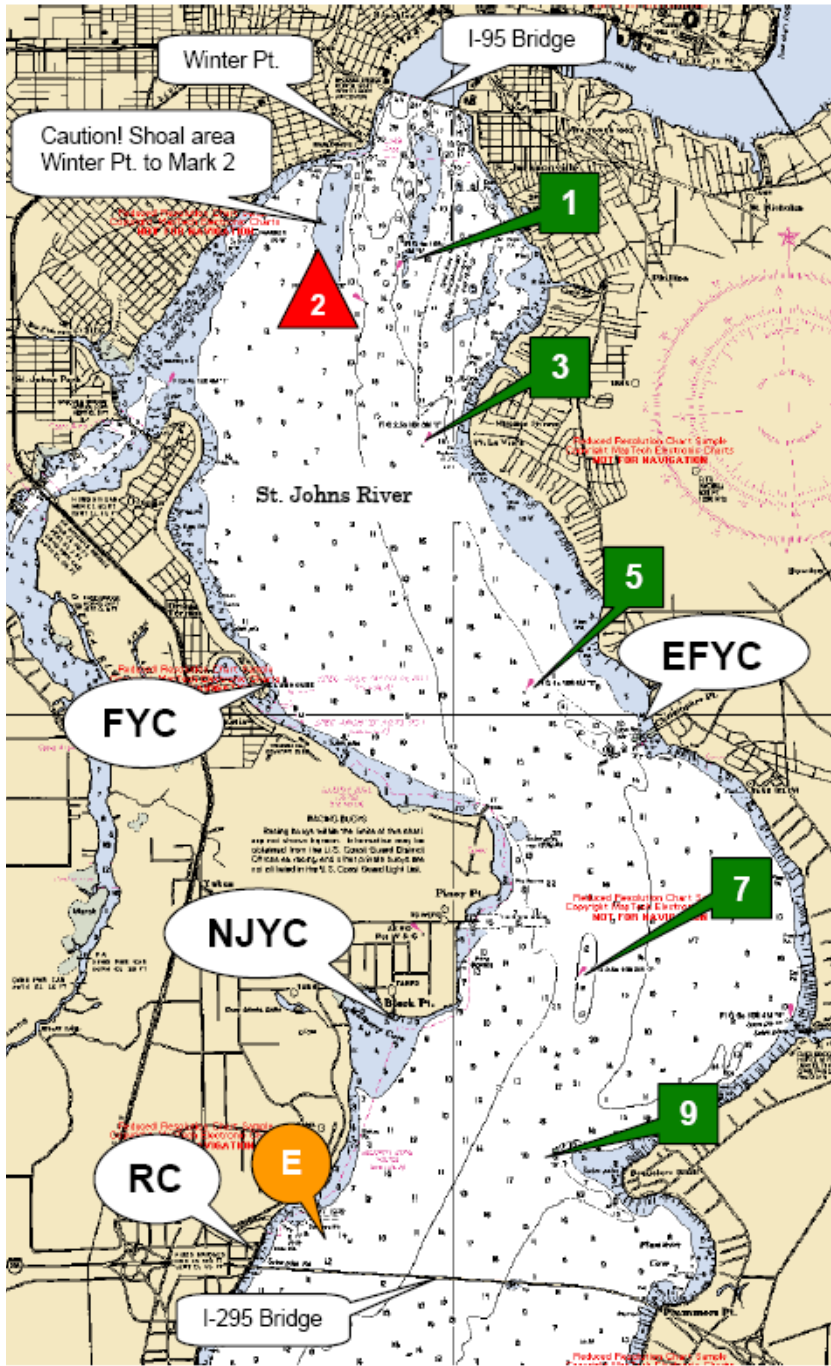
required to pay that cost or some portion thereof.

- 14.2 All competitors are required to conform to the U.S. Coast Guard regulations and the RRS concerning personal floatation devices and other required equipment. All boats are reminded that under fundamental rule 4 "The responsibility for a boat's decision to participate in a race or to continue racing is her's alone.
- 14.3 Boats shall not impede the passage of a vessel which can safely navigate only within a narrow channel. Boats interfering with other vessels may be subject to protest by the Race Committee or contestants and possible disqualification.
- 14.4 In accordance with Rule 42.3(h), providing no significant advantage is gained, a boat may employ propulsion using an engine or other method to remain clear of a non-racing vessel when required by Inland Rules.
- 14.5 All boats shall be equipped with functional navigation lights and sound producing device which comply with the Inland Navigation Rules. Lights shall be displayed at all times between the hours of sunset (2019) and sunrise (0647). Failure to comply with this requirement is protestable. Spreader and foredeck lights are allowed.
- 14.6 Any boat whose light fail to illuminate in accordance with the rules shall proceed immediately to the Rudder Club or their home dock. They shall sound restricted visibility signals in accordance with COLREGS while proceeding (one 4- 6 second blast every two minutes).

## **15 PRIZES**

PRIZES: Results will be announced at the Rudder Club immediately after the race. First, second, and third place prizes will be awarded in each class of five or more boats. First and second place prizes will be awarded for classes of 4 boats. First place prizes will be awarded for classes of 3 boats

# Attachment A



Race Marks GPS Position	Range and Bearing between I			
	From	To	Range n.m.	Beari Mag.
1 N30° 17.798' W81° 40.440'	E	7	2.3	048°
	E	9	1.5	073°
3 N30° 16.723' W81° 40.219'	1	3	1.1	175°
	1	5	2.8	168°
5 N30° 15.013' W81° 39.470'	3	1	1.1	355°
	3	5	1.7	163°
7 N30° 13.312' W81° 39.078'	3	7	3.7	169°
	5	1	2.8	348°
9 N30° 12.272' W81° 39.241'	5	3	1.7	343°
	5	7	1.9	175°
E N30° 11.700' W81° 40.900'	5	9	2.9	181°
	7	E	2.3	229°
E	7	1	4.6	350°
	7	3	3.6	349°
E	7	5	1.9	355°
	7	9	1.1	193°
E	9	E	1.5	253°
	9	5	2.9	001°
E	9	7	1.1	013°

**Note: Mark "E" is no longer a fixed mark. If designated as a mark of the course it will be replaced by an inflatable yellow mark.**