



ARMED FORCES DAY REGATTA

FCSA Spring Series #4 of 6

Saturday, May 17, 2014

Navy Jax Yacht Club

6801 Roosevelt Blvd. Jacksonville, FL 32212 (904) 778-0805

NOTICE OF RACE

1.0 RULES

The Regatta will be governed by *The Racing Rules of Sailing* (RSS), the rules of First Coast Sailing Association and this NOR. These may be altered by the Sailing Instructions.

2.0 ELIGIBILITY

- 2.1 The race is open to all boats with a current PHRF certificate from First Coast Sailing Association (FCSA). www.sailjax.com
- 2.2 Boats that do not have a current PHRF rating assigned by FCSA may obtain a provisional rating (\$35.00 first-time annual fee) that will be submitted to FCSA for review and issuance of a Rating Certificate.
- 2.3 A boat participating in the Spinnaker or Non-Spinnaker Class shall have sail numbers on the mainsails, spinnakers, and all headsails with an LP exceeding 130% of J. A boat sailing in the Cruiser Class shall have an identifying sail number on her mainsail.
- 2.4 Eligible boats may enter by completing registration with Navy Jax Yacht Club, which is the organizing authority.
- 2.5 Boats shall register in one of the following three classes: Spinnaker, Non-Spinnaker or Cruiser Class. Boats will be scored in the FCSA Annual Series based on the class designated on its entry form.

3.0 CLASSES

- 3.1 Performance Classes: The performance classes will consist of a Spinnaker Class and a Non-Spinnaker Class. These classes may be further subdivided at the Race Committee's discretion if there is sufficient number of entries.
- 3.2 Cruiser Class: A Cruiser Class will be offered. Refer to PHRF Rules of FCSA definitions and rules pertaining to the Cruiser Class.
- 3.3 A Multihull Cruiser Class may also be formed provided there are at least three registrants. Refer to PHRF Rules of FCSA for rules pertaining to multihull cruisers.

4.0 SCHEDULE OF EVENTS

- 4.1 Saturday, May 17: Complimentary docking at Navy Jax Yacht Club the morning of the race.
- 4.2 Saturday, May 17: **9:00-11:00 a.m. Registration; 11:00 a.m. Competitors Meeting; 12:00 p.m. Warning Signal**
- 4.3 Food and beverages will be available at Race Headquarters following the race (for donation).

5.0 ENTRY FEE/REGISTRATION

5.1 Entry fee is \$30. Mail checks payable to Navy Jax Yacht Club and accompanied by an entry form (Standard Race Entry Form available at www.sailjax.com). Entries may be mailed to: **Race Committee**, Navy Jax Yacht Club, 6801 Roosevelt Blvd, Jacksonville, FL 32212. Boats may also register between the hours of 9:00 a.m. thru 11:00 a.m. on the day of the race.

6.0 SAILING INSTRUCTIONS

- 6.1 Sailing Instructions will be available to be downloaded from the First Coast Sailing Association website www.sailjax.com. Copies will also be available at the registration table on the day of the race.

7.0 COURSE

- 7.1 Course will be a single PHRF Time on Distance race using government navigation marks and inflatable markers.

8.0 SCORING THE RACE

- 8.1 Classes will be scored using PHRF Time on Distance.
- 8.2 The Low Point scoring system of Appendix A will apply.
- 8.3 Results of this race will be forwarded to the First Coast Sailing Association for inclusion in the Annual Series scoring.

9.0 RACE PRIZES

- 9.1 First, second and third place prizes will be awarded in each class.

10.0 INFORMATION

Contact: Commodore@navyjaxyachtclub.com 904-778-0805



ARMED FORCES DAY REGATTA

FCSA Spring Series #4 of 6

Saturday, May 17, 2014

Navy Jax Yacht Club

6801 Roosevelt Blvd. Jacksonville, FL 32212 (904) 778-0805

SAILING INSTRUCTIONS

1. RULES

1.1 The regatta will be governed by *The Racing Rules of Sailing* (RRS) except as modified by the rules of the First Coast Sailing Association and these Sailing Instructions.

1.2 Racing Rules A4 and A5 are changed by SI 12.3 as follows: "A boat starting later than ten minutes after her starting signal will be scored 'Did Not Start' without hearing."

1.3 Racing Rules 35, A4, and A5 of the RRS are changed by SI 14.1 as follows: "A boat failing to finish within 60 minutes in corrected time after the first boat in her class will be scored 'Did Not Finish' without a hearing."

2. ENTRIES

2.1 Eligible boats are those who have officially entered by completing a registration form with Navy Jax Yacht Club in advance or during the registration period as set forth in the Notice of Race.

2.2 Additional eligibility requirements and class definitions are defined in the Notice of Race Articles 2 and 3.

3. SAFETY

3.1 All competitors are required to conform to the U.S. Coast Guard regulations and the RRS concerning personal floatation devices and other required equipment.

3.2 Boats shall not impede the passage of a vessel that can safely navigate only within a narrow channel or commercial fishing vessels while fishing or vessels with restricted ability to maneuver. Racing boats interfering with other vessels may be subject to protest by the Race Committee or contestants and possible disqualification.

3.3 Race Committee will monitor VHF Channel 72.

3.4 Boats shall attempt to check in with the Race Committee by sailing past on the non-course side prior to their class Warning Signal.

3.5 Boats withdrawing from a race prior to finishing shall make every effort to ensure that Race Committee is notified that they have withdrawn.

4. NOTICES TO COMPETITORS

4.1 Notices to competitors will be posted on the official notice board located at the Race Headquarters at Navy Jax Yacht Club.

5. CHANGES IN THE SAILING INSTRUCTIONS

5.1 Any change in the Sailing Instructions will be posted in accordance with SI 4.1 before 11:00 a.m. on the day of the race.

5.2 Oral changes to the Sailing Instructions may be communicated to each boat while on the water and prior to her warning signal.

6. SIGNALS MADE ASHORE

6.1 Signals made ashore will be displayed at the Race Headquarters at Navy Jax Yacht Club.

6.2 Code Flag "AP", Answering Pennant, displayed ashore with two sound signals (one when lowered) means "The race is postponed: do not leave the dock." The warning signal will be made not less than 45 minutes after AP is lowered.

7. RACE SCHEDULE




7.1 Saturday, May 17, one race

7.2 Schedule of Events:

Registration:	9:00-11:00 a.m.
Competitors' Meeting:	11:00 a.m.
Warning Signal:	12:00 p.m.

8. CLASS FLAGS

8.1 Class flags will be the International Numeral Pennants as depicted in the RRS.

Class	Flag	
Spinnaker	P1	
Non-Spinnaker	P2	
Cruiser	P3	

9. RACING AREA

9.1 The racing area will be in the St. Johns River between the Fuller Warren Bridge to the north and the Buckman Bridge to the south as depicted on NOAA Chart 11492.

10. THE COURSE

10.1 Race course will be displayed from a course board on the Race Committee boat.
10.2 A single race using river navigation marks will be displayed using the designation of the River Marks as depicted in Attachment A, and the letter designation for Mark "W" as described in SI 11.1 and 11.2.

11. MARKS

11.1 Marks may be government navigation marks as depicted on NOAA Chart 11492 (as corrected by Notices to Mariners) or yellow inflatable Mark "W" described in SI 11.2. Government marks will be designated by their number as appearing on the chart. Mark "W" will be designated by its alphabetic designator. Approximate positions for the government navigation marks are shown in Appendix A.
11.2 A yellow inflatable mark set to windward of the starting line as a windward mark will be designated "W", WHISKEY.
11.3 A limiting mark may be set to protect the committee boat close to her and on the same end of the starting line. No boat shall pass between the limiting mark and the committee boat. (This limiting mark is not a mark of the course.)

12. START

12.1 The Starting Line will be a line between an orange flag flown on the Race Committee Boat and a yellow inflatable mark set toward the left side of the course from the Committee

Boat.

12.2 Boats whose warning signal has not been made shall keep clear of the starting area.

12.3 A boat starting later than ten minutes after her starting signal will be scored "Did Not Start" without hearing. This changes Rules A4 and A5.

13. THE FINISH

13.1 The Finish Line will be between an orange flag flown on the Race Committee boat and a yellow inflatable mark set to the left side relative to the final leg of the course.

14. TIME LIMIT

14.1 The time limit shall be 3 hours for each class. A boat failing to finish within 60 minutes in corrected time after the first boat in her class will be scored "Did Not Finish" without a hearing. This changes RRS Rule 35 and Rule A4.1.

15. PROTESTS

15.1 Protests shall be filed with the Race Committee. Protest time will end one hour after the Race Committee boat docks after the racing.

15.2 Protest notices will be posted on the Official Bulletin Board at Race Headquarters at Navy Jax Yacht Club within 20 minutes following the protest time limit.

16. SCORING

16.1 Classes will be scored using PHRF Time on Distance.

16.2 The Low Point scoring system of RRS Appendix A will apply.

17. PRIZES

17.1 Results will be announced and trophy presentations will be made at Race Headquarters at Navy Jax Yacht Club following the race. The results will also be posted on the FCSA website www.sailjax.com.

18. FURTHER INFO:

Commodore@navyjaxyachtclub.com
904-778-0805

APPENDIX A

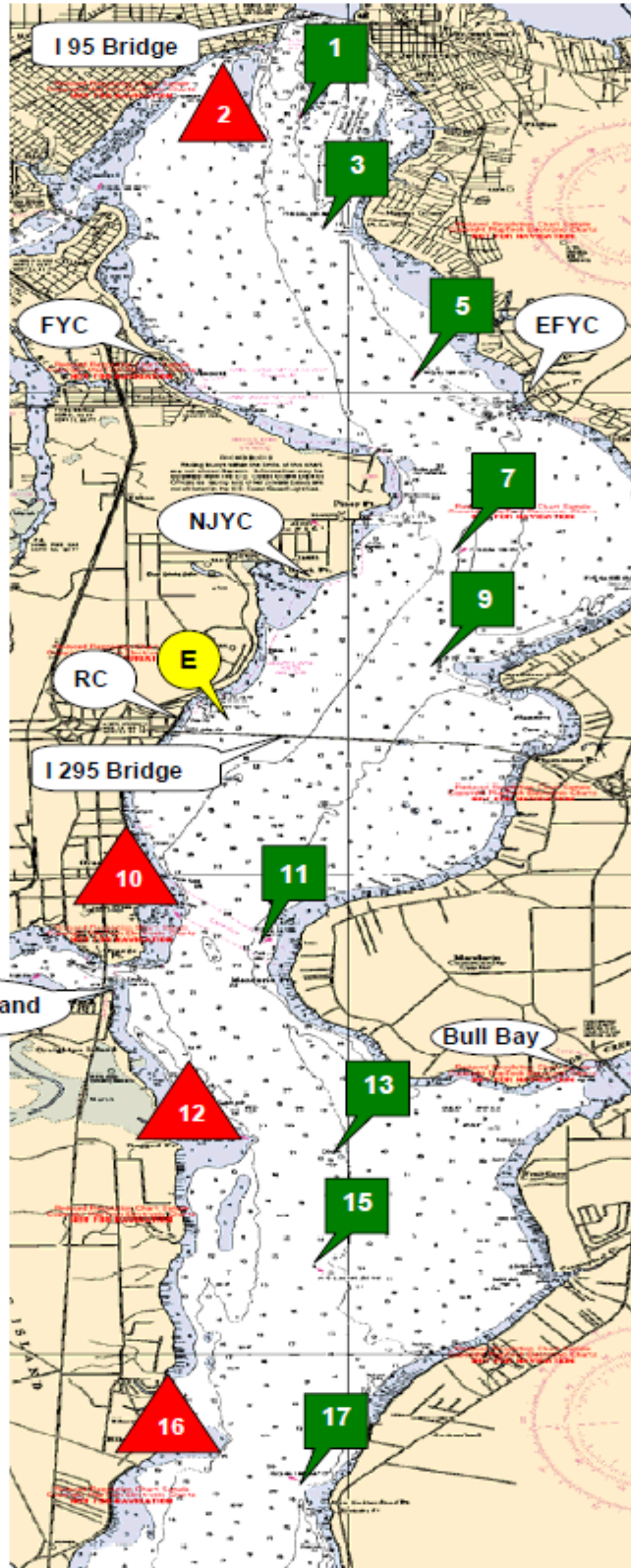


- 1 to 3 1.104 nm
- 1 to 5 2.787 nm
- 1 to 7 4.643 nm
- 3 to 5 1.703 nm
- 3 to 7 3.546 nm
- 5 to 7 1.863 nm
- 5 to 9 2.926 nm
- 7 to 9 1.095 nm
- 7 to E 2.240 nm
- 9 to E 1.486 nm

- 11 to 13 2.317 nm
- 11 to 15 3.400 nm
- 11 to 17 5.631 nm
- 13 to 15 1.109 nm
- 13 to 17 3.360 nm
- 15 to 17 2.252 nm



* Marks 2, 10, 12, 16 are well placed. Do not sail out of the channel without local knowledge.



*From 2009
USCG Light List*

River Mark G1
N 30° 17.813
W 81° 40.411

River Mark R2
N 30° 17.628
W 81° 40.635

River Mark G3
N 30° 16.719
W 81° 40.218

River Mark G5
N 30° 15.142
W 81° 39.466

River Mark G7
N 30° 13.305
W 81° 39.077

River Mark G9
N 30° 12.216
W 81° 39.237

Race Mark "E"
N 30° 11.648
W 81° 40.822

River Mark R10
N 30° 09.513
W 81° 41.399

River Mark G11
N 30° 09.305
W 81° 40.794

River Mark R12
N 30° 07.240
W 81° 40.800

River Mark G13
N 30° 07.036
W 81° 40.224

River Mark G15
N 30° 05.926
W 81° 40.283

River Mark R16
N 30° 04.038
W 81° 41.254

River Mark G17
N 30° 03.671
W 81° 40.393