



**St. Augustine Yacht Club**

Founded 1873

## 2014 Wednesday Night Race Series

This year the St. Augustine Yacht Club will be hosting three series of Wednesday Night Races, with five races in each series. Races are open to anyone interested in fun and friendly competition on the water. Enclosed please find a Notice of Race, Race Instructions and a Registration Form for boats not already listed in the fleet.

**Please note changes to First Coast Sailing Association (FCSA) rules AND also the changes to courses we will be using.**

The club will host a post race happy hour at the club after each race. All racers and crew are welcome.

For more information please contact:

David Patrick  
Rear Commodore of Sail  
St Augustine Yacht Club

(904) 687-4197 (cell phone)

Email: [sailing@staugustineyachtclub.com](mailto:sailing@staugustineyachtclub.com)

Web: [http://staugustineyachtclub.com/sailing\\_home](http://staugustineyachtclub.com/sailing_home)

Facebook: <https://www.facebook.com/StAugustineYachtClub>

Find a Crew/Find a Skipper: <http://staugustineyachtclub.com/letsrace#>



## Wednesday Night Race – 2014 Notice of Race

**1. Rules** Races will be governed by The Racing Rules of Sailing (RRS); the prescriptions of the United States Sailing Association, and by these sailing instructions.

**2. Eligibility** All sailboats. Everyone should try to pre-register (fill out race form), but feel free to show up the night of a race and check in on channel 72. All boats should have a current PHRF rating issued by the First Coast Sailing Association. (See Sailjax.com for forms). Boats without a rating from FCSA will be issued a provisional rating by SAYC.

**3. Schedule** The race series will consist of three series of 5 races, scheduled as follows:

<u>March Series</u>	<u>Summer Series</u>	<u>Fall Series</u>
Race #1 Mar 12 (5:00 p.m.)	Race #1 May 21 (5:30 p.m.)	Race #1 Aug 6 (5:30 p.m.)
Race #2 Mar 26 (5:00 p.m.)	Race #2 June 11 (5:30 p.m.)	Race #2 Aug 20 (5:30 p.m.)
Race #3 Apr 9 (5:00 p.m.)	Race #3 July 25 (5:30 p.m.)	Race #3 Sep 3 (5:00 p.m.)
Race #4 Apr 23 (5:00 p.m.)	Race #4 July 9 (5:30 p.m.)	Race #4 Sep 17 (5:00 p.m.)
Race #5 May 7 (5:30 p.m.)	Race #5 July 23 (5:30 p.m.)	Race #5 Oct 1 (5:00 p.m.)

**4. Registration** Boats already in the fleet may register on the SAYC website (staugustineyachtclub.com). Boats not listed in the fleet on the SAYC website may register in advance by completing the attached Entry Form/Waiver and sending it to the address listed on the form.

**5. Fees** Entry Fee per boat for each series is \$30 for SAYC members and \$50 for non-SAYC members, due at the beginning of the series. Entry fee checks made out to the St. Augustine Yacht Club should be sent to St Augustine Yacht Club, 442 Ocean Vista Ave., St. Augustine, FL 32080. SAYC members may elect to charge the Entry Fee to their account.

**6. Instructions** See attached sailing instructions.

**7. Fleets** Boats register to race in one of two PHRF fleets: ‘Cruising Fleet’ (flying code flag 6, **using the FCSA Spinnaker OR Non-spinnaker Rating**) or ‘Performance Fleet’ (flying code flag 5, using the FCSA Adjusted Rating). **Performance Fleet boats may fly a spinnaker but must choose to do so at the start of the series and thus will use either FCSA Spinnaker Rating OR Non-Spinnaker Rating.**

**Note:** Spinnakers may be flown in Cruising Fleet. See changes to rules below in “Sailing Instructions.”

**8. Scoring** Boats will be scored for each race. The series winner will be the boat with the fewest total points after excluding the worst score. Points will be awarded using the Low Point System as follows:

First Place	1 pts
Second Place	2 pts
Third Place	3 pts
Etc.	

All non-finishers (DNS, DNF, DSQ) will be scored in accordance with Rule A9.

**9. Prizes** Trophies will be awarded for first, second and third for each race series in both fleets.



## Wednesday Night Race - Sailing Instructions (March Series)

### **NOTE 2014 CHANGES TO COURSES & RULES (in red)**

Boats will race in two PHRF fleets. The Cruising Fleet will consist largely of heavier displacement cruising type boats with higher PHRFs and/or less experienced crew, and use FCSA Ratings. **Cruisers will be able to use spinnakers but must declare so before the start of each series and hence they will use their lower PHRF rating for the entire series.** The Performance Fleet will generally include faster boats with lower PHRFs and/or more experienced crew, and will use the FCSA Rating. **The faster Performance fleet will be required to sail the course twice, and the Cruising fleet once except in heavier airs when there will be an extra lap.** Boats in the Performance Fleet can elect to fly a spinnaker **but must declare so before the start of each series and hence will use their lower handicap for the entire series.**

March Series Wednesday Night Races will be sailed on one of **four** inland courses. The course will be selected the day of the race depending on wind conditions. The races in March, April, September and October will start at 5:00 pm sharp. The races in May, June, July and September will start at 5:30 pm sharp for Performance Fleet and 10 minutes later for Cruising Fleet. All races will use the following start sequence. The timing of the start is determined by the removal of the class flags (Time pieces and watches are relative). Sounds are secondary and may fail. The Race Committee can delay start times, combine fleets, or separate fleets at its discretion.

<b>5 minutes before the start</b>	<b>Class Flags Raised</b>	<b>Performance= Code flag 5 Cruising= Code flag 6</b>	<b>Horn Sound</b>
<b>4 minutes before the start</b>	<b>Preparatory Signal</b>	<b>“P” Flag raised (Blue with white square)</b>	<b>Horn Sound</b>
<b>1 minute before the start</b>		<b>“P” Flag Removed</b>	<b>Long Horn Sound</b>
<b>0 time The Start</b>		<b>Class Flags Removed</b>	<b>Horn Sound</b>

All sailors must check in with the committee boat at least 15 minutes before the start on VHF channel 72 or by passing by the Committee boat and hailing. Election to fly a spinnaker **(both Performance and Cruising) can ONLY be made prior to the first race in a series.** The race committee will monitor channel 72 and can provide race information up until the class flags are raised.

**Short Courses A (light wind generally from a southerly direction) and B (light wind northerly)** run north-south, beginning at Day Mark 55 north of the Vilano Beach Bridge on the ICW, to a mark set off Boating Club Road **and Day Mark 57** and back to the start. **In heavier airs, the Race Committee may elect to extend the courses by using Long Courses A or B depending on wind direction. SEE diagrams of courses below.**

Courses may be shortened if conditions require it. The 720 Degree Turn Rule will be in effect (rule 44.1 and 44.2).

The following flags may be flown by the committee boat:

Postponement:	rectangular pennant with red and white stripes
General Recall:	yellow pennant outlined in blue
Individual Recall:	white square with a blue cross
Shorten Course:	a white square with a blue square in its center
Come Within Hail:	Code Flag L, yellow and black squares

These races are intended to be a fun and friendly event, so protests are strongly discouraged. Varying boats with captains and crew of differing skill levels will be racing in close quarters so everyone is asked to be courteous and give spacing where needed. The Racing Rules of Sailing should be adhered to at all times.

# St Augustine Yacht Club 2014 Wednesday Night Race Courses

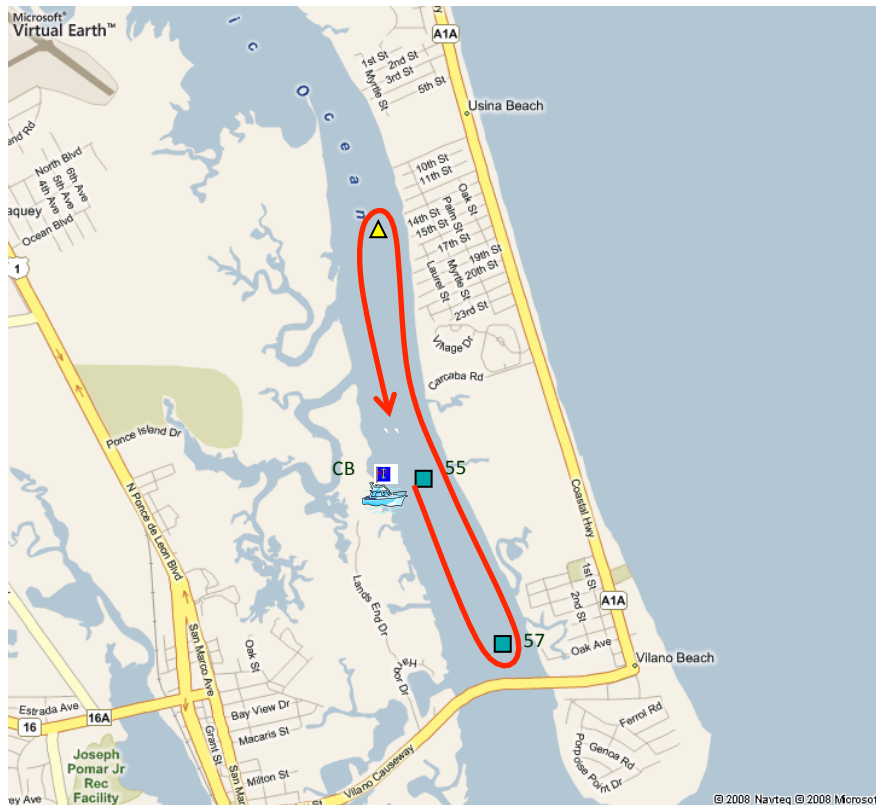
## Short Course A Light Southerly Winds

South from Day Mark 55 to Day Mark 57, to a buoy set off Boating Club Road & back to 55 (2.76 NM)

Cruising 1X  
Performance 2X

Leave marks on the left

**NOTE:** Committee boat & 55 are not marks of the course except the start and finish.



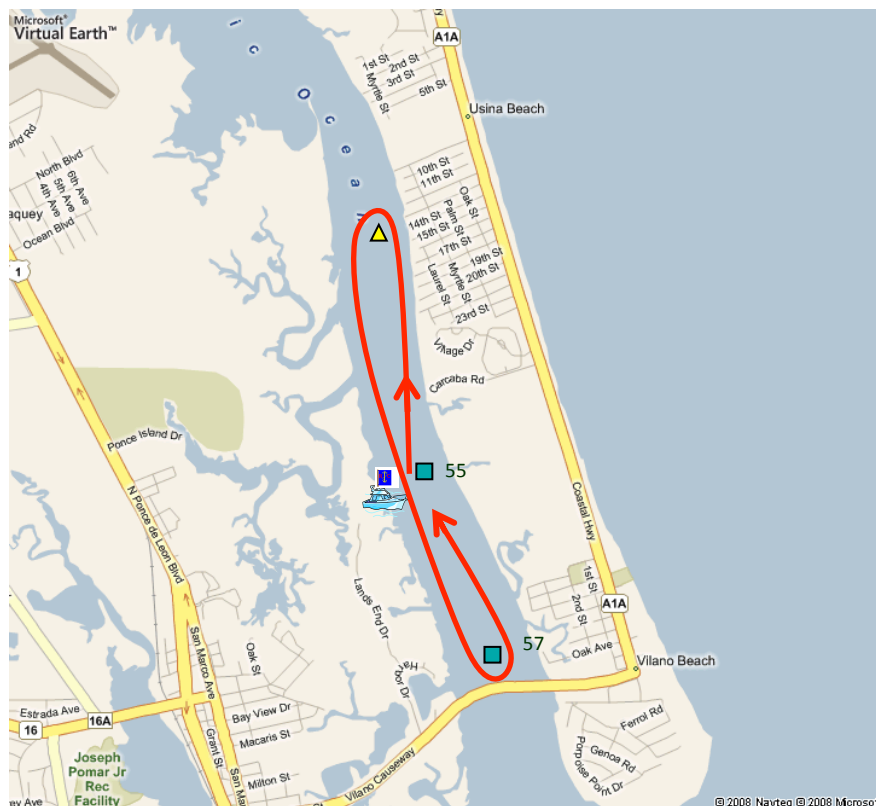
## Short Course B Light Northerly Winds

North from Day Mark 55 to a buoy set off Boating Club Road, to Day Mark 57 & back to 55 (2.76 NM)

Cruising 1X  
Performance 2X

Leave marks on the left

**NOTE:** Committee boat & 55 are not marks of the course except the start and finish.



# St Augustine Yacht Club

## 2014 Wednesday Night Race Courses (continued)

### Long Course A Heavy Southerly Winds

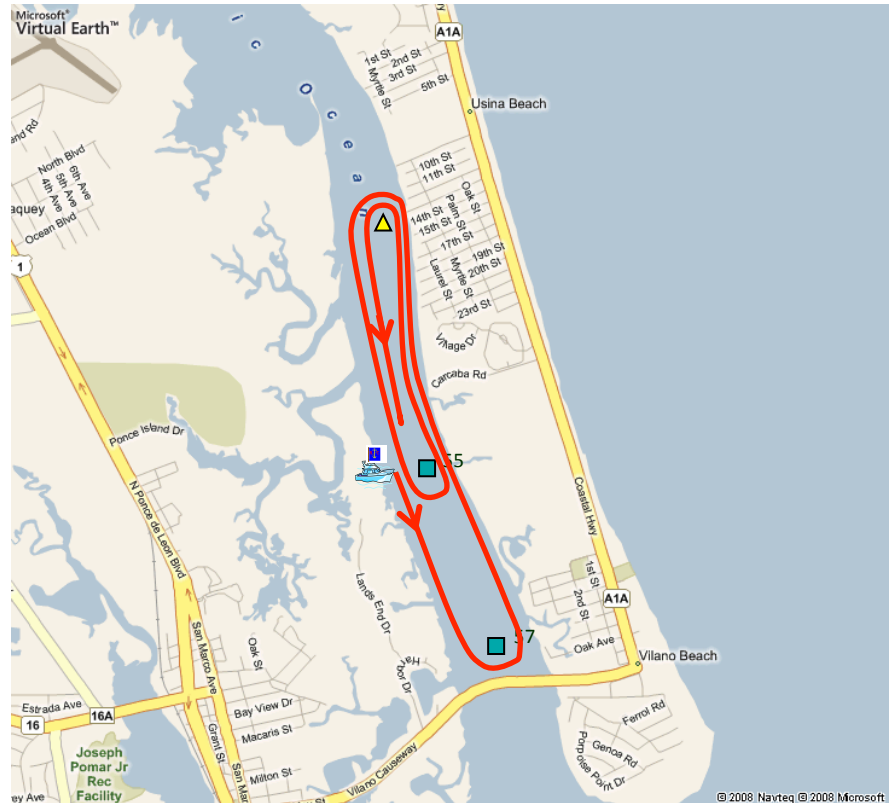
South from Day Mark 55 to Day Mark 57, to a buoy set off Boating Club Rd, to 55, back to BC Rd, to finish at 55.

Cruising 1X + Extra Lap (4.56 NM)  
Performance 2X + Extra Lap (7.32 NM)

Leave marks on the left

#### **NOTE:**

1. Committee boat & 55 are not marks of the course except the start and finish.
2. Extra Lap = 55 to BC Rd



### Long Course B Heavy Northerly Winds

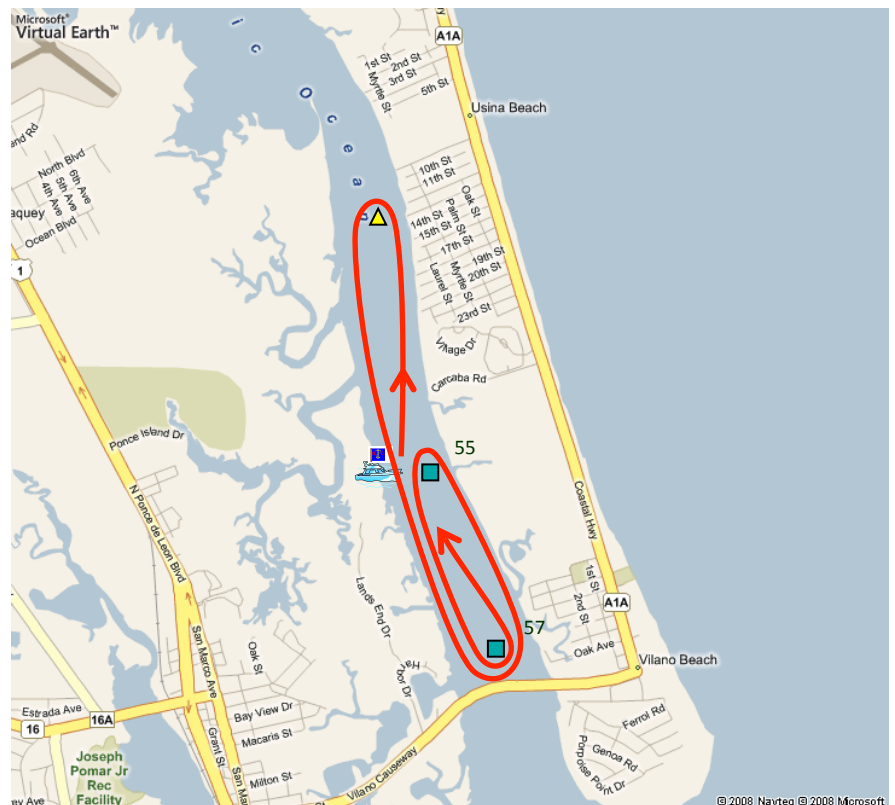
North from Day Mark 55 to a buoy set off Boating Club Road, to Day Mark 57 to 55, back to 57 and finish at 55.

Cruising 1X + Extra Lap (3.72 NM)  
Performance 2X + Extra Lap (6.48 NM)

Leave marks on the left

#### **NOTE:**

1. Committee boat & 55 are not marks of the course except the start and finish.
2. Extra Lap = 55 to 57



**ST AUGUSTINE YACHT CLUB  
YACHT RACING ENTRY FORM**

**RACE:** Wednesday Night March Series      **DATE:** \_\_\_\_\_

**YACHT NAME:** \_\_\_\_\_ **SAIL #:** \_\_\_\_\_

**YACHT MAKE/MODEL:** \_\_\_\_\_ **LENGTH:** \_\_\_\_\_ **COLOR:** \_\_\_\_\_

**PHRF RATING:** \_\_\_\_\_ **US SAILING MEMBER #** \_\_\_\_\_

**FLEET:** \_\_\_\_\_ **(CRUISER or PERFORMANCE)**

**OWNER'S NAME:** \_\_\_\_\_ **PHONE:** \_\_\_\_\_

**SKIPPER'S NAME:** \_\_\_\_\_ **PHONE:** \_\_\_\_\_

**CELL PHONE:** \_\_\_\_\_ **FAX:** \_\_\_\_\_

**EMAIL:** \_\_\_\_\_

**MAILING ADDRESS WITH ZIP:** \_\_\_\_\_

\_\_\_\_\_

**EMERGENCY CONTACT:** \_\_\_\_\_ **PHONE:** \_\_\_\_\_

**VESSEL NORMALLY DOCKED AT:** \_\_\_\_\_

The undersigned, for and on behalf of himself/herself, his/her guests, and the members of the crew of his/her yacht, hereby assumes all risk of accident and expressly agrees that the St. Augustine Yacht Club shall not be liable, under any circumstance, for any loss or injury to participants or others or the loss or damage to any yacht. The undersigned further agrees to indemnify and does hereby indemnify and hold the St. Augustine Yacht Club free and harmless under, from and against any and all losses, costs, damages, attorney's fees and liability of any kind or nature whatsoever growing out of or resulting from participation in any SAYC sponsored race.

**SIGNED:** \_\_\_\_\_ **DATE:** \_\_\_\_\_

Mail to: David Patrick  
c/o St. Augustine Yacht Club  
442 Ocean Vista Avenue  
St. Augustine, Florida 32080