

THE GATOR BOWL REGATTA

7-8 December 2013 One Design and Portsmouth
14 December 2013 PHRF
The Rudder Club of Jacksonville
8533 Malaga Avenue
Jacksonville, FL 32244, USA

1 RULES

- 1.1 The regatta will be governed by *The Racing Rules of Sailing* (RRS), the prescriptions of US SAILING, the rules of participating classes, and for the PHRF Race by the PHRF Rules of the First Coast Sailing Association.
- 1.2 Racing Rule 77 is changed as follows: Except for boats racing in PHRF, Flying Scot and Snipe classes (where class rules apply), all boats shall display on the main sail unique identification numbers. These numbers shall be in addition to class insignia and manufacturer's model number.

2 ADVERTISING

Advertising shall not be displayed.

3 ELIGIBILITY AND ENTRY:

- 3.1 Eligible boats are those who have officially entered by completing a registration form on-line or during the late registration period as set forth in this Notice of Race. On-line registration will be on the US Sailing Regatta Network as set forth in NOR Rule 5, Registration.
- 3.2 It is anticipated that boats will be divided into the following racing classes: Flying Scot, Thistle, Hobie 16, Snipe, 420's, Laser, Portsmouth mono-hull, and Portsmouth multi-hull for the One design and Portsmouth Race. Additional classes may be accommodated provided the minimum requirement of Rule 3.3 is met.
- 3.3 PHRF boats will be divided into Spinnaker, Non-spinnaker and Cruiser for the PHRF Race on 14 December. In the event there are insufficient boats in the Non-spinnaker and Cruiser Classes to form two separate classes, they will be raced as one class with the same start and same course. They will be scored as one class for Gator Bowl Trophies but may be scored separately for First Coast Sailing

Association trophy purposes.

- 3.4 A minimum of three registered boats is necessary to constitute a class.
- 3.5 PHRF class boats are required to have a current PHRF rating certificate issued by the First Coast Sailing Association.

4 SCHEDULE OF EVENTS

- 4.1 **SATURDAY 7 December** - One design, and Portsmouth classes. Three races are planned.

0930-1045: Late Registration

1100: Competitor's meeting. (Attendance is optional for those entries that have in their possession a copy of the sailing instructions and have registered on-line prior to 30 November.)

1155: Warning signal for first class
Dinner - After racing

- 4.2 **SUNDAY 8 December** - Two one-design/Portsmouth races are planned.

0955: Warning signal for first one design class.

***Note** - No one design starting sequence will be commenced after 1230.

- 4.3 **Saturday 14 December**

1000 - 1115: PHRF Late Registration

1130: PHRF Competitor's meeting (Attendance is optional for those entries that have in their possession a copy of the sailing instructions and have registered on-line prior to 13 December.) One race is planned; however, additional races for spinnaker and non-spinnaker classes may be conducted.

1255: Warning signal for PHRF classes and race.

Food and refreshments are available for all participants following racing.

5 REGISTRATION

- 5.1 Boats are encouraged to register on the US SAILING Regatta Network at:
One design Saturday and Sunday 7 & 8

December:

<http://www.regattanetwork.com/event/7423>

PHRF on Saturday 14 December:

<http://www.regattanetwork.com/event/7427>

5.2 Boats that have not registered on-line will be given an opportunity to late register on-line or with paper forms during the registration periods on Saturday and Sunday.

5.3 A list of entries may be viewed at:

One Design 7-8 Dec.:

http://www.regattanetwork.com/clubmgmt/applet_registrant_list.php?regatta_id=7423&custom_report_id=2

PHRF Saturday 14 Dec.:

http://www.regattanetwork.com/clubmgmt/applet_registrant_list.php?regatta_id=7427&custom_report_id=2

6. FEES

6.1 The Entry Fee for one design classes and Portsmouth classes is \$40.00. This includes a \$30.00 race registration fee and one \$10.00 dinner ticket.

6.2 The entry fee for Rudder Club members is in accordance Rudder Club By-Laws but does not include a dinner ticket. Tickets may be purchased in accordance with 6.5 below.

6.3 The Entry Fee for PHRF Race is \$30.00 which includes a \$30.00 race registration fee.

6.4 Additional Saturday Night Dinner Tickets may be purchased for \$10.00.

7 SAILING INSTRUCTIONS

This notice and sailing instructions will be available on the Rudder Club Web Site at www.rudderclub.com/gatorbowl.html :event web sites as follows:

One Design -

<http://www.regattanetwork.com/event/7423>

PHRF:

<http://www.regattanetwork.com/event/7427>

and posted on the official bulletin board on the north exterior wall of the Rudder Club. Changes to this notice or the Sailing Instructions will; posted on the Rudder Club web site; event web sites as above; posted on the official bulletin prior to 1000 on the morning of each race and be distributed by e-mail to those on-line entrants registering

with an e-mail address. Subsequent changes will be made in the form of a Notice to Competitors. Schedule changes will be posted prior to 1900 (7:00 PM) on the day prior to the race. Oral changes may be given on the water in accordance with RRS 90.2(c).

8 REGATTA SITE

The regatta site will be the Rudder Club of Jacksonville Inc.

9 RACING AREA

The racing area will be in the St. Johns River as depicted on NOAA Chart 11492 between the Buckman Bridge to the south and the Fuller Warren Bridge to the north

10 COURSES

Courses will be as shown in an addendum to the Sailing Instructions. The course to be sailed for each race will be displayed from a white board on the Race Committee Boat.

11 SCORING

One race is necessary to constitute a series. When fewer than 6 races have been completed a boat's series score will be the total of her race scores. When six or more races have been completed, a boat's score will be the total of all her scores excluding her worst score. Flying Scots participating in the FSSA District Series will be scored in accordance with FSSA rules in addition to being scored for the Gator Bowl.

12 PRIZES

First, second, and third place prizes will be awarded in classes of more than five finishing boats. First and second place prizes will be awarded in classes of four to five finishing boats. A first place prize will be awarded in classes of three or less finishing boats. One Design and Portsmouth Trophies will be awarded following racing on Sunday 7 December 2012. Trophies for the PHRF race will be presented at the Rudder Club following the event.

13 PARTICIPATION

Sailing is an activity that has an inherent risk of damage and injury. Competitors in this regatta are participating entirely at their own risk. See RRS 4, Decision to Race. Completion

and submission of a registration form for this regatta constitute an acceptance of and agreement to abide by the Racing Rules of Sailing, this Race Notice and the Sailing Instructions.

14 DIGITAL SELECTIVE CALLING (DSC)

PHRF boats with DSC capable VHF radios are encouraged to have obtained a Mobile Marine Service Identity (MMSI) number and have their VHF radio connected to their GPS.

For more information see:

http://www.cruisingclub.org/pdfs/safety_dsc_distress_comm_form.pdf.

15 FURTHER INFORMATION

For further information, please contact:
Regatta Chairman Dick Allsopp
3385 Sequoia Rd.
Orange Park, FL 32073
904-278-0329
dallsopp@ussailing.net
MMSI : 338097993 (Handheld)

Note: The below Quick Response Codes when scanned on a smart phone or other scan capable mobile device will take the user to a specific mobile device structured site on Regatta Network containing information on the Mug Race and the ability to register on-line. It will also contain the latest information on the race status as well as the NOR, the SIs and any changes there to. See below codes for browser links.

One Design Quick Response

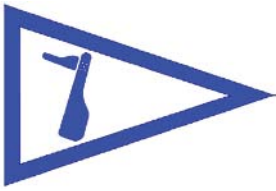


PHRF Quick Response Code



One design: <http://www.regattanetwork.com/event/7423>

PHRF: <http://www.regattanetwork.com/event/7427>



THE GATOR BOWL REGATTA

7-8 December 2013

The Rudder Club of Jacksonville

8533 Malaga Avenue

Jacksonville, FL 32244, USA

ONE DESIGN AND PORTSMOUTH SAILING INSTRUCTIONS-CH2

1 RULES

- 1.1 The regatta will be governed by the rules as defined in the current *Racing Rules of Sailing* (RRS).
- 1.2 US SAILING Prescriptions will apply.
- 1.3 Rule A4 is changed by SI 10.3.
- 1.4 Rules 35, A4 and A5 of the RRS are changed by SI 13.
- 1.5 Rule 61.3 "Protest Time Limit" is changed by SI 14.1.

2 NOTICES TO COMPETITORS

Official notices to competitors will be posted on the notice board located on the north exterior wall of the Rudder Club. Notices in addition may be published on the Rudder Club Web Site at www.rudderclub.com/ and the Regatta Network event website at <http://www.regattanetwork.com/event/7423>

3 CHANGES IN THE SAILING INSTRUCTIONS

Any change in the Sailing Instructions will be posted on the Official Bulletin Board on the Rudder Club north wall prior to 1200 7 December. Changes will also be published on the Regatta Network Web Site. Any change to the schedule of races will be posted by 2000 on the day before it will take effect. Oral changes may be made on the water and will be communicated to each boat prior to her warning signal.

4 SIGNALS MADE ASHORE

- 4.1 Signals made ashore will be displayed from the flag pole located on the north side of the Rudder Club.
- 4.2 When AP is displayed ashore "1 minute" is replaced with "not less than 45 minutes" in the race signal AP.

5 SCHEDULE OF RACES

- 5.1 Five races are scheduled for all classes except the Snipe Class which will race 7 races on 7 December.
- 5.2 Class divisions shall be posted on the Official Bulletin Board and for those not attending the Competitors Meeting they will appear on the registrant list on Regatta Network at

http://www.regattanetwork.com/clubmgmt/applet_registrant_list.php?regatta_id=74233&custom_report_id=85.

5.3 Schedule:

SATURDAY 7 December - One design, and Portsmouth classes. Three races are planned. The Snipe class will race five races on Saturday.

0930-1045: Late Registration
 1100: Competitor's meeting. (Attendance is optional for those entries that have in their possession a copy of the sailing instructions and have registered on-line prior to 7 December.)
 1155: Warning signal for first class
 Dinner - After racing

SUNDAY 8 December - Two one-design/Portsmouth races are planned.

0955: Warning signal for first one design class.
 *Note - No one design starting sequence will be commenced after 1230.

6 CLASS FLAGS

Class flags will be the International Numeral Pennants as depicted under Race Signals in the RRS.

Class		Pennant
Multihull Open	P1	
Flying Scot	P2	
Snipe	P3	
Laser	P4	
Monohull Open	P5	
Thistle	P6	
Spare (as assigned)	P8	
Spare (as assigned)	P9	
Spare (as assigned)	P0	

7 RACING AREA

The racing area will be in the St. Johns River

between the Buckman Bridge to the south and the Fuller Warren Bridge to the north as depicted on NOAA Chart 11492.

8 THE COURSE

- 8.1 Courses will be as depicted on illustration A and indicate the approximate angles between legs, the order of rounding, and the side on which each mark is to be left.
- 8.2 The course for each class will be displayed on a white board located aft on the starting line side of the committee boat. The designation shall consist of two letters designating the course. The letter designations and the mark sequences are as set forth in attachment A.
- 8.3 If the Race Committee sets a gate instead of the Leeward Mark, boats shall sail between marks forming the gate from the direction of the last mark and round either the port mark leaving it to port or the starboard mark leaving it to starboard.
- 8.4 If the Race Committee sets an offset mark in the vicinity of the windward mark, boats shall sail around both marks leaving them on the prescribed side.

9 MARKS

Marks 1L, 2P, and 2S will be inflated orange cylinders. Marks 1 will be an inflated yellow cylinder. Offset marks, if set, will be inflated yellow tetrahedrons and will be left to port.

10 START

- 10.1 The Starting Line will be a line between an orange flag flown on the Race Committee/Signal Boat and red inflated sphere set toward the left side of the course from the Committee Boat relative to the first leg of the course.
- 10.2 Boats whose warning signal has not been made shall avoid the starting area during the starting sequence of other classes.
- 10.3 A boat starting later than 5 minutes after her starting signal will be scored "Did Not Start." This changes RRS A4.

11 CHANGE OF COURSE AFTER THE START

To change the position of the next mark, the race committee will move the original mark (or the finishing line) to a new position. The change will be signaled before the leading boat has begun the leg, although the mark may not yet be in the new position. Any mark to be rounded after rounding the moved mark may be relocated without further

signaling to maintain the course configuration.

12 THE FINISH

The Finish Line will be between an orange flag flown on the Race Committee/Signal Boat and a red sphere set toward the left side of the course from the Committee Boat relative to the final leg of the course. (Opposite side of the committee boat from the starting line.) This is to accommodate conducting starts for some classes while others are finishing.

13 TIME LIMIT

The time limit for the first boat in each starting class to finish is 90 minutes from her start. A boat failing to finish within 30 minutes (corrected time where applicable) after the first boat in its class will be scored "DNF". This changes rules 35, A4 and A5.

14 PROTESTS AND REQUESTS FOR REDRESS

- 14.1 Protests shall be written on forms available at the Rudder Club. They shall be filed with the Regatta Chairman. Protest time will end 90 minutes after the last boat has finished the last race of the day. Protests will be heard in the approximate order received. This changes RRS 61.3.
- 14.2 Protest notices will be posted on the Official Bulletin Board within 30 minutes following the protest time limit.

15 SCORING

The Low Point Scoring System of appendix A will apply. Open classes will be scored in accordance with the Portsmouth Yardstick System. One race must be completed to constitute a series. A boat's series score will be the total of her race scores. When six or more races have been completed, a boat's series score will be the total of her race scores excluding her worst score.

16 SAFETY

- 16.1 Boats shall attempt to check in with the Race Committee by sailing past on the non-course side prior to their class Warning Signal.
- 16.2 Boats withdrawing from a race prior to finishing shall make every effort to ensure that Race Committee is notified that they have dropped out
- 16.3 All competitors are required to conform to the U.S. Coast Guard regulations and the RRS concerning personal floatation devices and other required equipment.
- 16.4 Yachts shall not impede the passage of a vessel

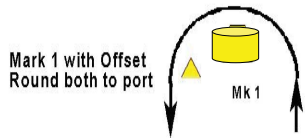
which can safely navigate only within a narrow channel, and give way to commercial fishing vessels while fishing or vessels with restricted ability to maneuver.

- 16.5 In accordance with Rule 42.3(h), providing no significant advantage is gained, a boat may employ propulsion using an engine or other method to remain clear of a non-racing vessel when required by Inland Rules.

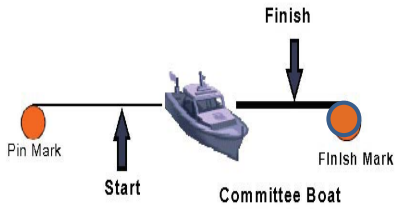
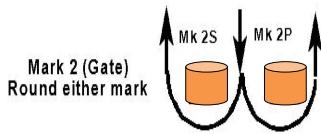
17 PRIZES

First, second, and third place prizes will be awarded in classes of more than five finishing yachts. First and second place prizes will be awarded in classes of four to five finishing yachts. A first place prize will be awarded in classes of three or less finishing yachts. Except for the Snipe Class, one design prizes will be awarded on Sunday 8 December. Snipe prizes will be awarded after racing on 7 December.

Gator Bowl 2013 Courses (Attachment A)



Not to Scale

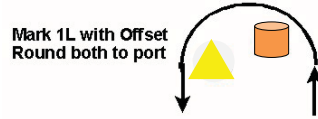


Windward Leeward Short

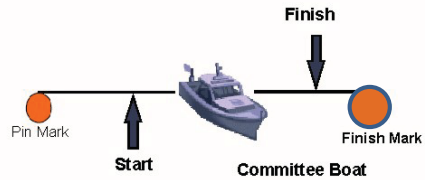
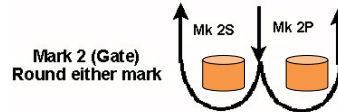
WS

Course Start, 1, 2P or 2S, 1, Finish

Attachment A



Not to Scale

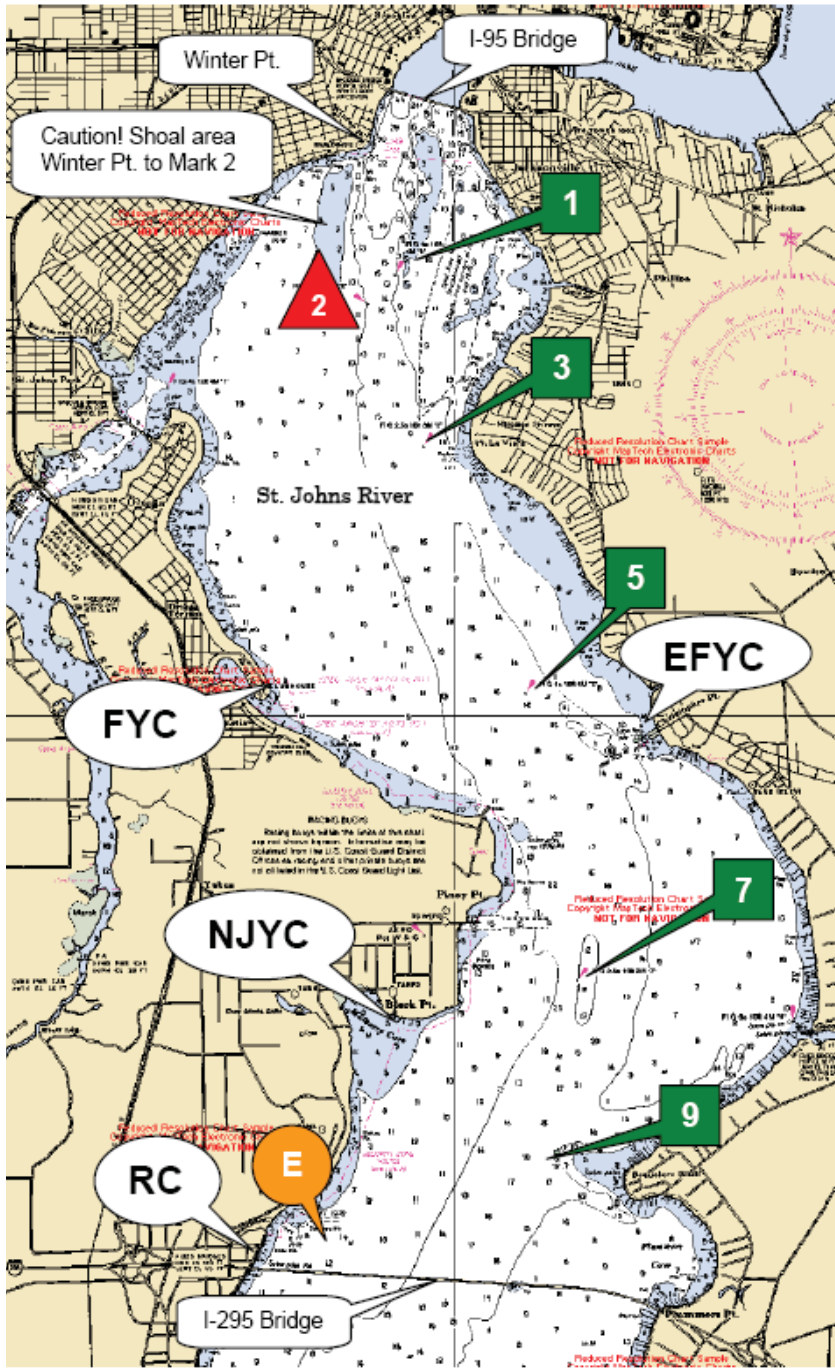


Windward Leeward Long

WL

Course Start, 1L, 2P or 2S, 1L, Finish

Attachment B



Race Marks	GPS Position	Range and Bearing between I			
		From	To	Range n.m.	Beari Mag.
1	N30° 17.798' W81° 40.440'	E	7	2.3	048°
		E	9	1.5	073°
3	N30° 16.723' W81° 40.219'	1	3	1.1	175°
		1	5	2.8	168°
5	N30° 15.013' W81° 39.470'	3	1	1.1	355°
		3	5	1.7	163°
		3	7	3.7	169°
7	N30° 13.312' W81° 39.078'	5	1	2.8	348°
		5	3	1.7	343°
		5	7	1.9	175°
		5	9	2.9	181°
9	N30° 12.272' W81° 39.241'	7	E	2.3	229°
		7	1	4.6	350°
		7	3	3.6	349°
		7	5	1.9	355°
		7	9	1.1	193°
E	N30° 11.700' W81° 40.900'	9	E	1.5	253°
		9	5	2.9	001°
		9	7	1.1	013°

Inflated yellow cylinder