

THE LABOR DAY REGATTA

31 August - 2 September 2013

The Rudder Club of Jacksonville

8533 Malaga Avenue
Jacksonville, FL 32244, USA

Notice of Race

1 RULES

- 1.1 The regatta will be governed by the rules as defined in *The Racing Rules of Sailing* (RRS), and by the PHRF rules of the First Coast Sailing Association.

2 ADVERTISING

Advertising shall not be displayed.

3 ELIGIBILITY AND ENTRY

- 3.1 Eligible yachts are those who have officially entered by completing a registration form on-line or during the late registration period as set forth in this Notice of Race.
- 3.2 One design boats and Portsmouth boats may register on line through 30 August on the US SAILING Regatta Network at https://www.regattanetwork.com/clubmgmt/applet_registration_form.php?regatta_id=7177 or the event web site at <http://www.regattanetwork.com/event/7177>.
- 3.3 PHRF entrants may register through 1 September on the US SAILING Regatta Network at https://www.regattanetwork.com/clubmgmt/applet_registration_form.php?regatta_id=7178 or the event web site at <http://www.regattanetwork.com/event/7178>.
- 3.4 Boats not registering on line may register by mail or during the Late Registration periods shown in NOR Article 5, Schedule of Events. Late registration fees apply.
- 3.5 It is anticipated that yachts will be divided into the following racing classes: Flying Scot, Hobie 16, Snipe, 420's, Laser, Pico, Portsmouth mono-hull, and Portsmouth multi-hull for the races on 31 August and 1 September. Classes for the PHRF race on 2 September will be PHRF Spinnaker, PHRF Non-spinnaker and PHRF Cruiser. Additional classes may be accommodated provided the minimum requirement of Rule 3.6 is met. Non-PHRF rated cruising and sport boats are welcome to participate in the Portsmouth races on Saturday and Sunday. Registration in accordance with 3.2.
- 3.6 A minimum of three registered boats is necessary to constitute a class.
- 3.7 PHRF class boats are required to have a current PHRF rating certificate issued by the First Coast Sailing Association.

4 FEES

- 4.1 Registration Fee: On line registration for all classes

\$25.00 (Rudder Club members in accordance with Rudder Club provisions. Place charge on Club Bill.).

- 4.2 Late Registration: \$30.00

- 4.3 Boats intending to race both Portsmouth Monohull on 31 August and 1 September as well as the Distance Race for PHRF rated boats on Monday 2 Sept need pay only one registration fee of \$25.00 for on-line registration or \$30.00 for late registration. When registering for the One Design/Portsmouth Regatta, indicate on the registration form your intent to race the PHRF Regatta then register for the PHRF Regatta on line and select at the top of the page the registration for those who have already registered for the Saturday and Sunday events.

- 4.4 Boats intending to race only with the Portsmouth Class should register on line in accordance with NOR article 3.2.

5 SCHEDULE OF EVENTS

- 5.1 **SATURDAY 31 August 2013** - One design, and Portsmouth classes. Three races are anticipated.

1000 – 1130: Late registration
1140: Competitor's meeting
1255: Warning signal for first class
1730: Party . One entrant per registration. \$5.00 for additional entrants. (Rudder Club members in accordance with Rudder Club provisions)
Everybody is invited.

- 5.2 **SUNDAY 1 September 2013** – One design and Portsmouth class racing continues. Two races are anticipated. Warning Signal for first class 0955

- 5.3 **MONDAY 2 September 2013 - PHRF Classes:**
1200 – 1330: PHRF Late Registration
1340 - Competitor's Meeting (Optional for those registering on line and holding a copy of the Sailing Instructions.)
1455: Warning signal for first class.

6 SAILING INSTRUCTIONS

This notice, and sailing instructions will be available on the Rudder Club Web Site at www.rudderclub.com/laborday.html , on Sailjax.com , on the event web sites listed in NOR articles 3.2 and 3.3, and posted on the official



bulletin board on the north exterior wall of the Rudder Club. Changes to this notice or the Sailing Instructions will be distributed by e-mail to those on-line entrants with an e-mail address; posted on the [Rudder Club web site](#) and posted on the official bulletin prior to 1000 on the morning of each race. Subsequent changes will be made in the form of a Notice to Competitors. Schedule changes will be posted prior to 1900 (7:00 PM) on the day prior to the race. Oral changes may be given on the water in accordance with RRS 90.2(c).

7 VENUE

The regatta site will be at the Rudder Club of Jacksonville Inc. Parking within the fence at the Rudder Club is reserved for Rudder Club members only. Guests of members and visiting sailors are requested to park in the parking area outside the fence.

8 RACING AREA

The racing area will be in the St. Johns River as depicted on NOAA Chart 11492 between the Buckman Bridge to the south and the Fuller Warren Bridge to the north.

9 COURSES

Courses will be as shown in an addendum to the Sailing Instructions and on the Rudder Club web site at www.rudderclub.com. Courses will be displayed from a board displayed on the Race Committee Boat.

10 SCORING

A boat's series score will be the total of her race scores. When six or more races have been completed, a boat's series score will be the total of her race scores excluding her worst score. One race is necessary to constitute a series.

11 PRIZES

First, second, and third place prizes will be awarded in classes of more than five finishing yachts. First and second place prizes will be awarded in classes of four to five finishing yachts. A first place prize will be awarded in classes of three or less finishing yachts. One design trophies will be awarded following racing on Sunday 1 September 2013. Cruiser trophies will be awarded following racing on Monday 2 September 2013.

12 DISCLAIMER OF LIABILITY

Serious accidents occasionally occur during yacht racing events and participants in yacht racing may sustain mortal or serious injuries and/or property damage as a consequence thereof. By registering, the person in charge (skipper) knowingly assumes the risks of yacht racing. The decision for a boat to participate in a race or continue racing is that of the person in charge's alone. It is the responsibility of the person in charge to obtain a signed release from each member of his or her crew before the race begins. By entering the race the person in charge agrees to abide by the rules, regulations and sailing instructions of the Labor Day Regatta, the ISAF and the United States Sailing Association. Minors must present a copy of the registration form signed by a parent or guardian before being allowed to participate as a person in charge.

13 FURTHER INFORMATION

For further information, please contact:
One Design and Portsmouth – Rich Brew
richbrew@att.net
PHRF – Karl Hoffman

Quick Response Codes - Read the following on your Barcode Reader App for On-line registration or latest Regatta Information .



One design/Portsmouth

<http://www.regattanetwork.com/event/7177>



Phrf

<http://www.regattanetwork.com/event/7178>

The Rudder Club of Jacksonville, Inc.
8533 Malaga Ave. Jacksonville, FL 32244
(904) 264-4094

**RACE REGISTRATION FORM
2013 Labor Day Regatta**

Person in Charge _____
(Skipper See RRS 46)
Address _____
City/State/Zip _____
Telephone _____
Cell Phone _____
MMSI _____
Yacht Club Affiliation _____

Emergency Contact:

Name _____
Address _____
City/St/Zip _____
Telephone _____

Crew Names

Sail Number _____
Boat Make/Model _____
Boat Name _____
Class _____

Class/Rating (Portsmouth or PHRF): If intending to race in both the Portsmouth and PHRF races enter both ratings below.

Portsmouth Monohull _____ / _____
Portsmouth Multihull _____ / _____
PHRF Spinnaker Class not applicable / _____
PHRF/ Non-Spinnaker Class not applicable / _____
PHRF Cruiser Class not applicable / _____

Fee: \$30.00 Check # _____

Credit Card

Type _____ Card # _____ Good Thru _____

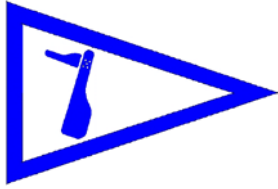
I do not intend to race in the Monday PHRF Race _____ **I do intend to race in the Monday PHRF Race** _____

Agreement and Statement of Understanding

In consideration of the acceptance of my application to enter the Labor Day Regatta, I understand and accept that serious accidents occasionally occur during yacht racing events and that participants in yacht racing occasionally sustain mortal or serious injuries and/or property damage as a consequence thereof. I knowingly assume the risks of yacht racing. I understand that the decision to race or continue racing is mine alone. It is my responsibility as the person in charge to obtain a signed release from each member of his or her crew before the race begins. I agree to abide by the rules, regulations and sailing instructions of this regatta, the ISAF and the United States Sailing Association. Minors must present a copy of this form signed by a parent or guardian before being allowed to race.

Signature Person in Charge _____ Date _____

Parent/Guardian's Signature _____ Date _____
if person in charge is a minor



THE LABOR DAY REGATTA
30 August -- 1 September 2013
The Rudder Club of Jacksonville
8533 Malaga Avenue
Jacksonville, FL 32244, USA

ONE DESIGN AND PORTSMOUTH
SAILING INSTRUCTIONS

1 RULES

- 1.1 The regatta will be governed by the rules as defined in the current *Racing Rules of Sailing* (RRS).
- 1.2 US SAILING Prescriptions will apply
- 1.3 Rules 35, A4 and A5 of the RRS are changed by SI 13.

2 NOTICES TO COMPETITORS

Official notices to competitors will be posted on the notice board located on the north exterior wall of the Rudder Club. Notices may in addition be published on the Rudder Club Web Site at www.rudderclub.com/ the event web site at <http://www.regattanetwork.com/event/7177>.

3 CHANGES IN THE SAILING INSTRUCTIONS

Any change in the Sailing Instructions will be posted on the Official Bulletin Board on the Rudder Club north wall prior to 1200 30 August may in addition be published on the Rudder Club Web Site at www.rudderclub.com/ or the event web site at <http://www.regattanetwork.com/event/7177>. Any change to the schedule of races will be posted by 2000 on the day before it will take effect. Oral changes may be made on the water and will be communicated to each boat prior to her warning signal.

4 SIGNALS MADE ASHORE

- 4.1 Signals made ashore will be displayed from the flag pole located on the north side of the Rudder Club.
- 4.2 When AP is displayed ashore "1 minute" is replaced with "not less than 45 minutes" in the race signal AP.

5 SCHEDULE OF RACES

- 5.1 Five races are scheduled.
- 5.2 Class divisions shall be posted on the Official Bulletin Board.
- 5.3 Schedule:
SATURDAY 30 August - One design and Portsmouth classes - Three races.

Registration on line through 1 September at https://www.regattanetwork.com/clubmgmt/applet_registration_form.php?regatta_id=7177

- 1000 – 1130: Late registration
- 1140: Competitors' meeting
- 1255: Warning signal for first class
- SUNDAY 1 September - One design and Portsmouth classes - . Two races
- Warning signal for first class 0955

6 CLASS FLAGS

Class flags will be the International Numeral Pennants as depicted under Race Signals in the RRS.

Class		Pennant
Portsmouth Multihull	P1	
Hobie 16	P2	
Spare (as assigned)	P3	
Flying Scot	P4	
Laser	P5	
Snipe	P6	
420's	P8	
Pico	P9	
Portsmouth Monohull	P0	

7 RACING AREA

The racing area will be in the St. Johns River between the Buckman Bridge to the south and the Fuller Warren Bridge to the north as depicted on NOAA Chart 11492.

8 THE COURSE

- 8.1 Courses will be as depicted on illustration A and indicate the approximate angles between legs, the order of rounding, and the side on which each mark

is to be left.

- 8.2 The course for each class will be displayed on a white board located aft on the starting line side of the committee boat. The designation shall consist of two letters designating the course. The letter designations and the mark sequences are as set forth in attachment A.
- 8.3 If the Race Committee sets a gate instead of the Leeward Mark, boats shall sail between marks forming the gate from the direction of the last mark and round either the port mark leaving it to port or the starboard mark leaving it to starboard.
- 8.4 If the Race Committee sets an offset mark in the vicinity of the windward mark, boats shall sail around both marks leaving them on the prescribed side.

9 MARKS

Marks BS, BP, and DA will be inflated orange cylinders. Marks A will be an inflated yellow cylinder.

10 START

- 10.1 The Starting Line will be a line between an orange flag flown on the Race Committee/Signal Boat and a red inflated sphere set toward the left side of the course from the Committee Boat relative to the first leg of the course.
- 10.2 Boats whose warning signal has not been made shall avoid the starting area during the starting sequence of other classes.

11 CHANGE OF COURSE AFTER THE START

To change the position of the next mark, the race committee will move the original mark (or the finishing line) to a new position. The change will be signaled before the leading boat has begun the leg, although the mark may not yet be in the new position. Any mark to be rounded after rounding the moved mark may be relocated without further signaling to maintain the course configuration.

12 THE FINISH

The Finish Line will be between an orange flag flown on the Race Committee/Signal Boat and a white sphere set toward the left side of the course from the Committee Boat relative to the final leg of the course. (Opposite side of the committee boat from the starting line.) This is to accommodate conducting starts for some classes while others are finishing.

13 TIME LIMIT

The time limit for the first boat in each starting class to finish is 90 minutes from her start. A boat failing to finish within 30 minutes (corrected time where applicable) after the first boat in her class will be scored "DNF". This changes rules 35, A4 and A5.

14 PROTESTS AND REQUESTS FOR REDRESS

- 14.1 Protests shall be written on forms available at the Rudder Club. They shall be filed with the Regatta Chairman. Protest time will end 90 minutes after the last boat has finished the last race of the day. Protests will be heard in the approximate order received.
- 14.2 Protest notices will be posted on the Official Bulletin Board within 30 minutes following the protest time limit.

15 SCORING

The Low Point Scoring System of appendix A will apply. Open classes will be scored in accordance with the Portsmouth Yardstick System. One race must be completed to constitute a series. A boat's series score will be the total of her race scores. When six or more races have been completed, a boat's series score will be the total of her race scores excluding her worst score.

16 SAFETY

- 16.1 Boats shall attempt to check in with the Race Committee by sailing past the committee boat on the non-course side prior to their class Warning Signal.
- 16.2 Boats withdrawing from a race prior to finishing shall make every effort to ensure that Race Committee is notified that they have dropped out
- 16.3 All competitors are required to conform to the U.S. Coast Guard regulations and the RRS concerning personal floatation devices and other required equipment.
- 16.4 Yachts shall not impede the passage of a vessel which can safely navigate only within a narrow channel, and give way to commercial fishing vessels while fishing or vessels with restricted ability to maneuver.
- 16.5 In accordance with Rule 42.3(h), providing no significant advantage is gained, a boat may employ propulsion using an engine or other method to remain clear of a non-racing vessel when required by Inland Rules.

17 PRIZES

First, second, and third place prizes will be awarded in classes of more than five finishing yachts. First and second place prizes will be awarded in classes of four to five finishing yachts. A first place prize will be awarded in classes of three or less finishing yachts. One design prizes will be awarded on Sunday 1 September.

Quick Response Codes - Read the following on your Barcode Reader App for On-line registration or latest Regatta Information .



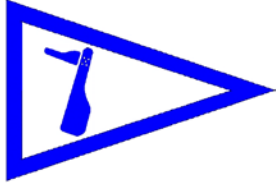
One design/Portsmouth

<http://www.regattanetwork.com/event/7177>

Round the Buoy Courses

<div style="text-align: center;"> <p>Mark A</p> <p style="text-align: center;">To finish</p> <p style="text-align: center;">Mark BS Mark BP</p> <p style="text-align: center;">Start Finish</p> </div>	<div style="text-align: center;"> <p>Mark DA</p> <p style="text-align: center;">To finish</p> <p style="text-align: center;">Mark BS Mark BP</p> <p style="text-align: center;">Start Finish</p> </div> <div style="border: 1px solid black; padding: 5px; margin-top: 10px;"> <p>Note: On the diagram a mark with an “X” through it indicates it is not a mark of the course.</p> </div>
<p style="text-align: center; font-size: 24pt; font-weight: bold;">WS</p> <p>Start -A- BP or BS - A - Finish Note: If a leeward gate is not set, only Mark BP will be set and is to be left to port.</p>	<p style="text-align: center; font-size: 24pt; font-weight: bold;">WD</p> <p>Start - DA - BP or BS - DA - Finish Long Course Note: If a leeward gate is not set, only Mark BP will be set and is to be left to port.</p>

Note: An offset mark may be placed near the windward mark. The offset mark is a mark of the course and rounded accordingly.



THE LABOR DAY REGATTA

September 2, 2013

The Rudder Club of Jacksonville

8533 Malaga Avenue

Jacksonville, FL 32244, USA

DISTANCE RACE SAILING INSTRUCTIONS

1 RULES

- 1.1 The regatta will be governed by the rules as defined in the current Racing Rules of Sailing (RRS), and the rules of the First Coast Sailing Association.
- 1.2 Racing Rules A4 and A5 are changed by SI 10.4 as follows: "A boat starting later than five minutes after her starting signal will be scored "Did Not Start" without hearing."
- 1.3 Racing rules 35, A4, and A5 of the RRS are changed by SI 13.1 as follows: "A boat failing to finish within 30 minutes (corrected time where applicable) after the first boat in her class will be scored 'Did not Finish' without a hearing".
- 1.4 Racing rules 35, A4, and A5 of the RRS are changed by SI 13.2 as follows: "A boat failing to finish within 45 minutes (corrected time where applicable) after the first boat in her class will be scored 'Did not Finish' without a hearing".

2 NOTICES TO COMPETITORS

Official notices to competitors will be posted on the official notice board located on the north exterior wall of the Rudder Club. Notices may also be published on the Rudder Club Web Site at www.rudderclub.com or the event web site at <http://www.regattanetwork.com/event/7178> time permitting.

3 CHANGES IN THE SAILING INSTRUCTIONS

- 3.1 Changes to the Sailing Instructions will be posted on the official bulletin board on the north exterior wall of the Rudder Club prior to 1200 on the day of the race. Time

permitting they will also be distributed by e-mail to those on-line entrants with an e-mail address provided on the registration form on Regatta Network and posted on the Rudder Club web site.

- 3.2 Oral changes to the Sailing Instructions may be communicated to each boat while on the water and prior to her warning signal.

4 SIGNALS MADE ASHORE


- 4.1 Signals made ashore will be displayed from the flag pole located on the north side of the Rudder Club.
- 4.2 When AP is displayed ashore "1 minute" is replaced with "not less than 45 minutes" in the race signal AP.
- 4.3 Signals made ashore will also be relayed on Marine VHF Channel 78(US)

5 SCHEDULE OF RACES

- 5.1 Depending on wind conditions one race using river navigation marks or three, windward/leeward, round-the-buoy races may be conducted.
- 5.2 Schedule:
MONDAY 2 September 2013 - PHRF Classes, 1200 – 1330 - PHRF Late Registration
1400 - Competitors' Meeting (Optional for those registering on line and possessing a copy of the Sailing Instructions).
1455 - Warning signal for first class.

6 CLASS FLAGS

Class flags will be the International Numeral Pennants as depicted in the RRS

Class	Flag	
Spinnaker	P1	
Non-Spinnaker	P2	
Cruiser	P3	

7 RACING AREA

The racing area will be in the St. Johns River between the Buckman Bridge to the south and the Fuller Warren Bridge to the north as depicted on NOAA Chart 11492.

8 THE COURSE

- 8.1 Race course for PHRF Classes will be displayed from a course board on the committee boat.
- 8.2 Round the mark races will be designated as shown in Attachment A.
- 8.3 A single race using river navigation marks will be displayed using the numerical designation of the River Marks as depicted in Attachment B.
- 8.2 If the Race Committee sets an offset mark in the vicinity of the windward mark, boats shall sail around both marks leaving them on the prescribed side.
- 8.3 If a leeward gate is not set, boats shall round the single leeward mark leaving it to port.

9 MARKS

- 9.1 Mark A will be a yellow cylinder. Marks DA, BS and BP will be orange cylinders. (See attachment A)
- 9.2 Marks may be government navigation marks as depicted on NOAA Chart 11492 (as corrected by Notices to Mariners), FCSA Race Marks, or an inflatable mark. Government marks will be designated by their number as appearing on the chart. FCSA marks will be designated by their Alphabetic designator. Approximate positions are shown in Appendix B.
- 9.3 An orange sphere set to windward of the starting line as a windward mark will be designated "W", WHISKEY.

- 9.3 If an offset mark is set at Mark A or Mark DA the offset mark will be a yellow trapezoid. Boats shall sail around both marks leaving them to port.
- 9.4 A limiting mark may be set to protect the committee boat close to her and on the same end of the starting line. No boat shall pass between the limiting mark and the committee boat.

10 START

- 10.1 The Starting Line will be a line between an orange flag flown on the Race Committee/Signal Boat and a red inflated sphere set toward the left side of the course from the Committee Boat.
- 10.3 Boats whose warning signal has not been made shall remain clear of the starting area while other boats are in their start sequence.
- 10.4 A boat starting later than five minutes after her starting signal will be scored "Did Not Start" without hearing. This changes Rules A4 and A5.

11 CHANGE OF COURSE AFTER THE START

To change the position of the next mark, the race committee will move the original mark (or the finishing line) to a new position. The change will be signaled before the leading boat has begun the leg, although the mark may not yet be in the new position. Any mark to be rounded after rounding the moved mark may be relocated without further signaling to maintain the course configuration.

12 THE FINISH

If multiple around-the-buoy races are run, the Finish Line will be between an orange flag flown on the Race Committee Boat and a white inflated sphere set to the left side and perpendicular relative to the final leg of the course. If a single river mark race is run the Finish Line will be an orange sphere set perpendicular to and to the right side of the finish boat relative to the final leg of the course.

13 TIME LIMIT

- 13.1 The time limit shall be 90 minutes for each class for round the buoy races WD and WS. Boats failing to finish within 30 minutes corrected time after the first boat of their class finishes will be scored "Did not Finish." This changes rule 35 and rule A41.
- 13.2 If a single river race is signaled, the time limit will be 3 hours. Boats failing to finish within 45 minutes corrected time after the first boat of their class finishes will be scored "Did not Finish." This changes rule 35 and rule A41.

14 PROTESTS AND REQUESTS FOR REDRESS

- 14.1. Protests shall be written on forms available at the Rudder Club. They shall be filed with the Regatta Chairman. Protest time will end 90 minutes after the last boat has finished the last race of the day. Protests will be heard in the approximate order received.
- 14.2 Protest notices will be posted on the Official Bulletin Board within 30 minutes following the protest time limit.

15 SAFETY

- 15.1 The Race Committee boat and Race Support boats will maintain a listening watch on Marine VHF Channel 78(US).
- 15.2 Boats shall attempt to check in with the Race Committee by sailing past on the non-course side prior to their class Warning Signal.
- 15.3 Boats withdrawing from a race prior to finishing shall make every effort to ensure

that Race Committee is notified that they have dropped out

- 15.4 All competitors are required to conform to the U.S. Coast Guard regulations and the RRS concerning personal floatation devices and other required equipment.
- 15.5 Boats shall not impede the passage of a vessel which can safely navigate only within a narrow channel, and give way to commercial fishing vessels while fishing or vessels with restricted ability to maneuver.
- 15.6 In accordance with Rule 42.3(h), providing no significant advantage is gained, a boat may employ propulsion using an engine or other method to remain clear of a non-racing vessel when required by Inland Rules.

16 SCORING

- 16.1 PHRF Classes will be scored using PHRF Time on Distance
- 16.2 One race must be completed to constitute a series.

17 PRIZES

Results will be announced at the Rudder Club following the race. First, second, and third place prizes will be awarded in classes of more than five finishing boats. First and second place prizes will be awarded in classes of four to five finishing boats. A first place prize will be awarded in classes of three or less finishing boats.

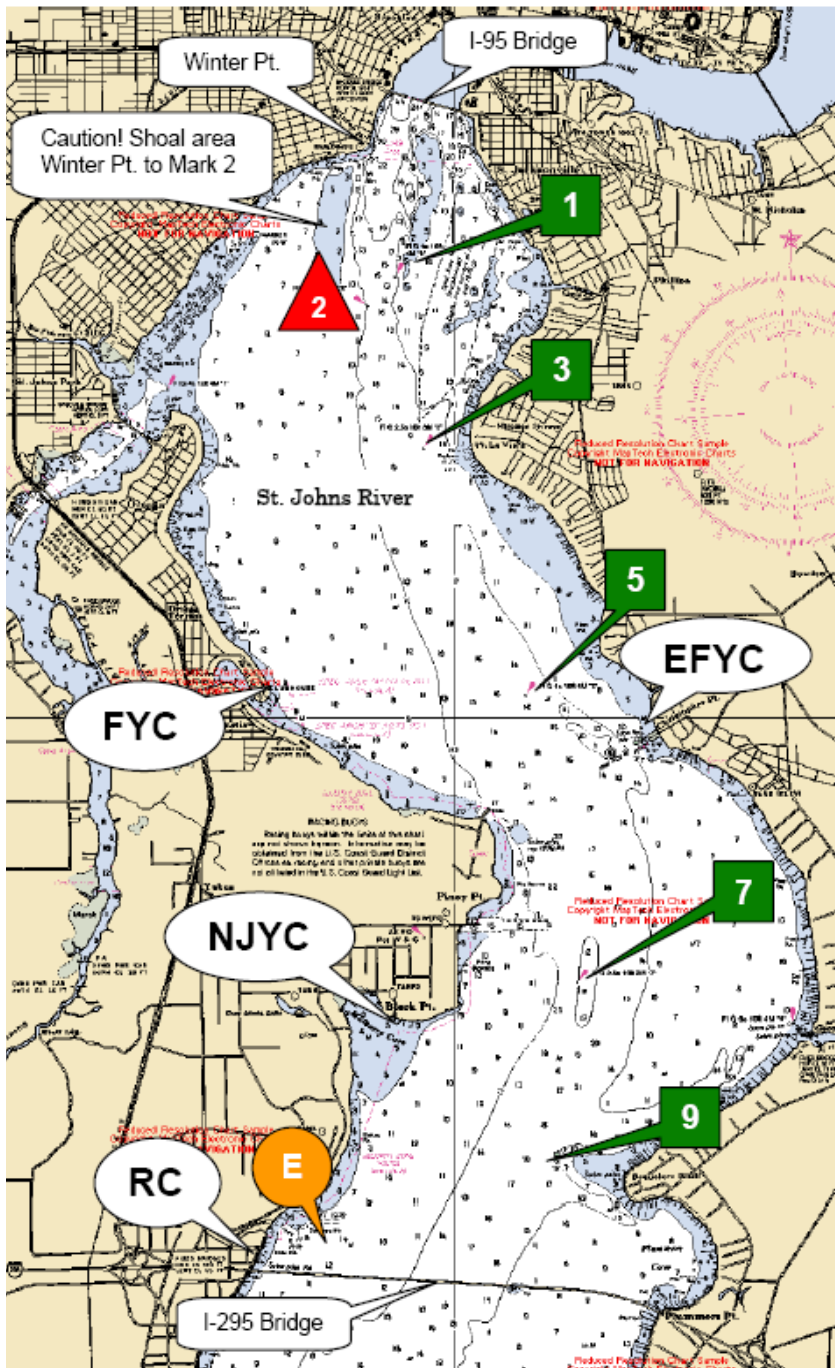
Quick Response Codes - Read the following on your Barcode Reader App for On-line registration or latest Regatta Information . PHRF Mobile Registration <http://www.regattanetwork.com/event/7178> or full https://www.regattanetwork.com/clubmgmt/applet_registration_form.php?regatta_id=7178



Round the Buoy Courses

<div style="text-align: center;"> <p>Mark A</p> <p style="text-align: center;">To finish</p> <p>Mark BS Mark BP</p> <p style="text-align: center;">Start Finish</p> </div>	<div style="text-align: center;"> <p>Mark DA</p> <p style="text-align: center;">To finish</p> <p>Mark BS Mark BP</p> <p style="text-align: center;">Start Finish</p> </div> <div style="border: 1px solid black; padding: 5px; margin-top: 10px;"> <p>Note: On the diagram a mark with an “X” through it indicates it is not a mark of the course.</p> </div>
<p style="text-align: center; font-size: 24pt; font-weight: bold;">WS</p> <p>Start -A- BP or BS - A - Finish Note: If a leeward gate is not set, only Mark BP will be set and is to be left to port.</p>	<p style="text-align: center; font-size: 24pt; font-weight: bold;">WD</p> <p>Start - DA - BP or BS - DA - Finish Long Course Note: If a leeward gate is not set, only Mark BP will be set and is to be left to port.</p>

Note: An offset mark may be placed near the windward mark. The offset mark is a mark of the course and rounded accordingly.



Race Marks
GPS Position

Range and Bearing between I

	From	To	Range n.m.	Beari Mag.
1	E	7	2.3	048°
	E	9	1.5	073°
3	1	3	1.1	175°
	1	5	2.8	168°
5	3	1	1.1	355°
	3	5	1.7	163°
	3	7	3.7	169°
7	5	1	2.8	348°
	5	3	1.7	343°
	5	7	1.9	175°
	5	9	2.9	181°
9	7	E	2.3	229°
	7	1	4.6	350°
	7	3	3.6	349°
	7	5	1.9	355°
	7	9	1.1	193°
E	9	E	1.5	253°
	9	5	2.9	001°
	9	7	1.1	013°

Note: Mark "E" is no longer a fixed mark. If designated as a mark of the course it will be replaced by an inflatable yellow mark.