



# 2013 Armed Forces Day Regatta

Navy Jacksonville Yacht Club

**Saturday May 18th**

## **SAILING INSTRUCTIONS**

### **1. RULES**

1.1 The regatta will be governed by the rules as defined in the Racing Rules of Sailing (RRS) 2013-2016, the First Coast Sailing Association (FCSA) regulations, and these sailing instructions.

### **2. MANAGEMENT**

2.1 This race will be under the management of the Navy Jacksonville Yacht Club (NJYC), which is also the organizing authority.

### **3. ELIGIBILITY**

3.1 The race is open to all yachts with a valid PHRF certificate from the FCSA.

### **4. REGISTRATION and ENTRY FEE**

4.1 Competitors may enter at any time prior to race day by delivering or mailing a completed First Coast Sailing Association (FCSA) Standard Entry Form along with the \$30 entry fee to:

Navy Jacksonville Yacht Club  
Attention: Race Committee  
PO Box 29  
Naval Air Station  
Jacksonville FL 32212-0029

4.2 Competitors may also register at Navy Jacksonville Yacht Club (NJYC) on race day from 0900-1100.

### **5. NOTICES TO COMPETITORS**

5.1 Notices to competitors will be posted on the official notice board located at the Pavilion next to NAS Mulberry Cove Marina.

### **6. SIGNALS MADE ASHORE**

6.1 Any signals made ashore will be displayed from the flagpole located on the south lawn of NJYC.

### **7. SCHEDULE, CLASSES, AND FLAGS**

7.1 A competitors' meeting will be held at 1100 on Saturday, May 18<sup>th</sup>, 2013 at NJYC. The warning signal for the first start will be at 1200 or as soon as possible thereafter (allowing for preparation of the course). Warning signals for subsequent starts will be given after each boat from the first start is either across the starting line, or has been scored DNS.

**7.2** The regatta shall be contested in the PHRF Spinnaker, Non-Spinnaker, and Cruiser classes in accordance with the Performance Handicap Racing Fleet (PHRF), and the rules of the FCSA.

**7.3** The class flag for the first start of the day will be the numeral 1; the class flag for the second start of the day will be the numeral 2; the class flag for the third start will be the numeral 3. The Cruiser Fleet will start first; the Non-spinnaker Fleet and the Spinnaker Fleet normally start second. If a third start is required, its class flag will be the numeral 3. The Preparatory Flag will be "P" for all starts. Starts may be combined at the discretion of the PRO depending on the number of vessels competing.

## **8. RACING AREA**

**8.1** The racing area will be in the St. Johns River as depicted on NOAA Chart 11492 between the Buckman Bridge to the south and the Fuller Warren Bridge to the north.

## **9. COURSES and MARKS**

**9.1** The course will be created by the Principal Race Officer (PRO) on race day using a combination of government navigation markers and inflatable markers. The course description will be displayed on the official notice board, on the white board at the Skippers' meeting, and on a white board on the Committee Boat.

## **10. STARTING AND FINISHING LINES; STARTING SYSTEM**

**10.1** The starting and finishing line will be the same line for this race unless the course is changed or shortened by the Principle Race Officer (PRO), and will be a straight line leading from an orange flag on the Committee Boat to either an inflatable race marker or a designated government navigation marker.

**10.2** The starting signals will be as described in Part 3, Rule 26 of the Racing Rules.

## **11. TIME LIMIT**

**11.1 Yachts** failing to cross the finish line within 60 minutes after the first boat to finish in their class shall be scored DNF (modification of Rule 35); boats failing to cross the start line within 20 minutes of their start signal will be scored DNS.

## **12. PROTESTS**

**12.1 Protests** shall be delivered to the Race Committee at NJYC within 30 minutes from the time the Committee Boat is docked at Mulberry Cove Marina. Hearings will be held as soon as possible after racing in the approximate order in which they were filed.

## **13. SCORING**

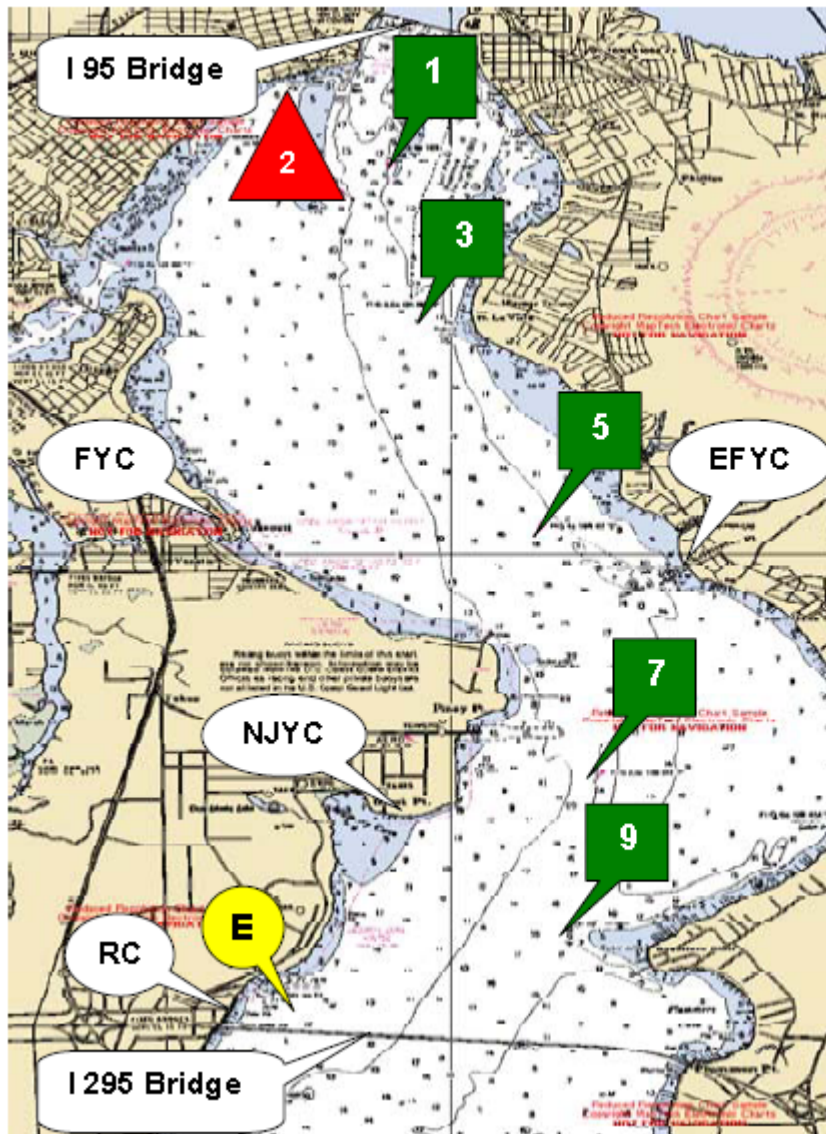
**13.1** One race is scheduled for each class. Finishing scores will be calculated into the series standings by FCSA. Prizes will be awarded for 1<sup>st</sup>, 2<sup>nd</sup>, and 3<sup>rd</sup> place in all 3 classes; presentation will take place after the Race Committee has posted the race results on the Notice Board at the pavilion.

## **14. ADDITIONAL INFORMATION**

**14.1** The Race Committee will monitor Marine VHF channel 68. The Race Committee requests that all racing vessels check in with the race committee by radio, and inform the Race Committee when retiring.

**14.2** As a condition of participation all members of the crew, guests and owners of the vessels participating assume all risks of accident and agree that Navy Jacksonville Yacht Club and First Coast Sailing Association shall not be liable, under any circumstance, for loss or injury to participants or others, or the loss or damage to any yacht and shall hold Navy Jacksonville Yacht Club and the First Coast Sailing Association free and harmless from and against any and all losses, costs, damages, attorney fees and liability of any kind or nature whatsoever growing out of or resulting from participation in the race.

# Sample River Chart with Marker Locations



River Mark G1  
N30° 17.798'  
W081° 40.440'

River Mark G3  
N30° 16.723'  
W081° 40.219'

River Mark G5  
N30° 15.013'  
W081° 39.470'

River Mark G7  
N30° 13.312'  
W081° 39.078'

River Mark G9  
N30° 12.272'  
W081° 39.241'

FCSA Mark "E"  
N30° 11.700'  
W081° 40.900'