

THE RIVER CITY REGATTA
March 17th & 18th, 2012
The Rudder Club of Jacksonville
8533 Malaga Avenue
Jacksonville, FL 32244

Notice of Race

1 RULES

- 1.1 The regatta will be governed by The Racing Rules of Sailing (RRS).
- 1.2 The rules of participating classes and the PHRF rules of the First Coast Sailing Association for PHRF classes will apply.
- 1.3 Rules 35 and A4.1 are changed by Article 9 Time Limit

2 ADVERTISING

Advertising shall not be displayed.

3 ELIGIBILITY AND ENTRY

- 3.1 The regatta is open to all PHRF boats holding a PHRF rating certificates issued by the First Coast Sailing Association and boats of the Catalina 22, J-24, Flying Scot, A Class Catamaran, Hobie 16, Hobie 18, Snipe, Laser, Pico, and Portsmouth classes.
- 3.2 Additional classes of three or more boats will be accommodated.
- 3.3 Eligible boats may enter by completing a registration form on-line at the Rudder Club web site at <http://www.rudderclub.com> or on US SAILING's, [Regatta Network](#), through Friday 16 March at 2400, and late registration on 17 March.

4 FEES

- 4.1 The registration fee for the regatta is \$40.00. (Includes one dinner ticket for Saturday night St Patrick's Day Party)
- 4.2 There will be a \$5.00 late registration fee for all registrations after midnight 16 March 2012.

5 SCHEDULE

- 5.1 17 March 2012 - All classes
Late registration: 1100 –1130
Competitors' meeting: 1200
Warning signal for first class: 1255

- 5.2 18 March 2011- All classes
Warning signal for first class 0955

6 SAILING INSTRUCTIONS

The sailing instructions will be available on or before 1 March 2010 and will be posted on the official bulletin board on the north wall of the Rudder Club, [www. SailJax.com](http://www.SailJax.com), and on the Rudder Club web site at www.rudderclub.com.

7 VENUE

The racing area will be in the St. Johns River between the Buckman Bridge to the south and the Fuller Warren Bridge to the north as depicted on NOAA Chart 11492.

8 THE COURSES

- 8.1 Courses and course diagrams will be contained in the sailing instructions.
- 8.2 All races will be around-the-buoy, windward leeward courses.

9 TIME LIMIT

One Design - The time limit for the first boat in each one design starting class to finish is 45 minutes from her start. Boats failing to finish within 30 minutes corrected time of the first boat in their class will be scored Did Not Finish. This changes rules 35 and A4.1.

10 SCORING

- 10.1 One design classes will be scored in order of finish. PHRF Classes will be scored using time on distance. Open classes will be scored in accordance with the Portsmouth Yardstick (HC) System.
- 10.2 One race must be completed to constitute a series. A boat's series score will be the total of her race scores. If 6 races are completed a boat's worst score will be discarded.

11. SUPPORT BOATS

Support boats shall display a red and yellow flag similar in design to code flag uniform

awarded in classes of four to five finishing boats. A first place prize will be awarded in classes of three or less finishing boats.

12. PRIZES

First, second, and third place prizes will be awarded in classes of more than five finishing boats. First and second place prizes will be

13. FURTHER INFORMATION

For further information please contact the Rudder Club office at 904-264-4094.

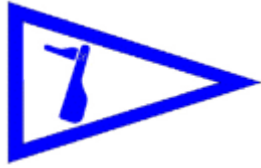
Saturday Racing will be followed by a St. Patrick’s Day dinner come join our membership for traditional corn beef and cabbage. One dinner ticket included with each registration. Additional dinner tickets \$10.00.

For directions to the Rudder Club and a list of local motels please see our web site at www.rudderclub.com

NOTE: The Quick Response Code to the right when scanned on a smart phone or other scan capable mobile device will take the user to a specific mobile device structured site on Regatta Network containing information on the River City Regatta and the ability to register on-line. It will also contain the latest information on the race status as well as the NOR, the SIs and any changes there to. The actual URL for this page is as follows:

https://www.regattanetwork.com/clubmgmt/mgmt_qrcode_info.php?regatta_id=5010





THE RIVER CITY REGATTA
March 17th & 18th, 2012
The Rudder Club of Jacksonville
8533 Malaga Avenue
Jacksonville, FL 32244

1 RULES

- 1.1 The regatta will be governed by the rules as defined in the current Racing Rules of Sailing (RRS).
- 1.2 US SAILING Prescriptions will apply
- 1.3 Rules 35 and A4.1 of the RRS are changed by SI-13.

2 NOTICES TO COMPETITORS

Official notices to competitors will be posted on the official bulletin board located on the north exterior wall of the Rudder Club. Notices may also be published on the Rudder Club Web Site at <http://www.rudderclub.com>.

3 CHANGES IN THE SAILING INSTRUCTIONS

Any change in the Sailing Instructions will be posted on the Official Bulletin Board on the Rudder Club north wall and on the Web Site. Changes after 1130, 17 March will be in the form of a Notice to Competitors except that any change to the schedule of races will be posted by 2000 on the day before it will take effect. Oral changes may be made on the water and will be communicated to each boat prior to her warning signal.

4 SIGNALS MADE ASHORE

- 4.1 Signals made ashore will be displayed from the flag pole located on the north side of the Rudder Club.
- 4.2 Code Flag "AP", Answering Pennant, displayed ashore with two sound signals (one when lowered) means "The race is postponed" The warning signal will be made not less than 60 minutes after "AP" is lowered.

5 SCHEDULE OF RACES

- 5.1 Five races for are planned for round the buoy classes. One distance River Race around FCSA River Marks is planned per day for the PHRF Cruiser Class. Additional races may be

scheduled for individual classes at that class's request.

- 5.2 Class divisions where differing from SI-6 will be posted on the Official Bulletin Board.
- 5.3 Schedule

SATURDAY 17 March - One design, PHRF and Portsmouth classes - three races planned.
PHRF Cruiser Class – One Distance River Race.

Late registration: 1100 –1130

Competitors' meeting: 1200

Warning signal for first class: 1255

SUNDAY 18 March - One design, PHRF and Portsmouth classes - two races planned. PHRF Cruiser Class – One Distance River Race.

Warning signal for first class 0955

*Note 1 - No starting sequence will be commenced after 1230.

*Note 2 - The actual number and type of races on each day may vary depending on weather and other circumstances.

6 CLASS FLAGS

Class flags will be the International Numeral Pennants as depicted under Race Signals in the RRS.

Multihull Open	P1	
PHRF Spinnaker	P2	
PHRF Non-Spinnaker	P3	
Flying Scot	P4	
Portsmouth Monohull	P5	
Spare	P6	
Spare	P8	
PHRF Cruiser	P9	

7 RACING AREA

The racing area will be in the St. Johns River between the Buckman Bridge to the south and the Fuller Warren Bridge to the north as depicted on NOAA Chart 11492.

8 THE COURSE

- 8.1 Courses will be as depicted in Attachments A and B. Courses for round the mark racing depict the approximate angles between legs, the order of rounding, and the side on which each mark is to be left.
- 8.2 The course for each class will be displayed on a white board located aft on the starting line side of the committee boat. The designation shall consist of two letters and a number designating the course. The letter/number designations and the mark sequences are as set forth in attachment A. FCSA river marks will be designated by a number or letter as shown in Attachment B plus the letters "P" or "S" standing for port and starboard respectively. This second letter indicates the side of the boat to which the mark is to be left when rounding.
- 8.3 If the Race Committee sets a gate instead of a single Leeward Mark, boats shall sail between marks forming the gate from the direction of the last mark and round either the port mark leaving it to port or the starboard mark leaving it to starboard as shown in the example below.
- 8.4 If the Race Committee sets an offset mark in the vicinity of the windward mark, boats shall sail around both marks leaving them on the prescribed side.

9 MARKS

Marks 1L, 2S, and 2P will be orange cylinders. Mark 1 will be a yellow cylinder with a yellow triangular offset. Mark 1L off-set will be an orange sphere. A new mark laid in accordance with Change of Course procedures will be yellow cylinder. The start mark will be orange sphere and the finish mark will be a white sphere. Marks for distance river race courses will be as indicated in attachment B.

10 START

- 10.1 The Starting Line will be a line between an orange flag flown on the Race

Committee/Signal Boat and a mark set toward the left side of the course from the Committee Boat relative to the first leg of the course.

- 10.2 Boats whose warning signal has not been made shall avoid the starting area.

11. CHANGE OF COURSE AFTER THE START

To change the position of the next mark, the race committee will move the original mark (or the finishing line) to a new position. The change will be signaled before the leading boat has begun the leg, although the mark may not yet be in the new position. Any mark to be rounded after rounding the moved mark may be relocated without further signaling to maintain the course configuration.

12 THE FINISH

The Finish Line will be between an orange flag flown on the Race Committee/Signal Boat and a mark set toward the left side of the course from the Committee Boat relative to the final leg of the course (opposite side of the committee boat from the starting line). This is to accommodate conducting starts for some classes while others are finishing.

13 TIME LIMIT

The time limit for the first yacht in each starting class to finish is 90 minutes from her start. For River Courses the time limit is 150 minutes. Yachts failing to finish within 30 minutes (corrected time where applicable) after the first yacht in her class will be scored "DNF". This changes rule 35 and A4.1.

14 PROTESTS AND REQUESTS FOR REDRESS

- 14.1 Protests shall be written on forms available at the Rudder Club or the US SAILING Web Site. They shall be filed with the Protest Committee. Protest time will end 90 minutes after the last boat has finished the last race of the day. Protests will be heard in the approximate order received.
- 14.2 Protest notices will be posted on the Official Bulletin Board within 30 minutes following the protest time limit.

15 SAFETY

- 15.1 On the first race of each day, boats shall attempt to check in with the Race Committee by sailing past the committee boat on the non-course side prior to their class Warning Signal.
- 15.2 Boats withdrawing from a race prior to finishing a race or retiring before racing has ended for the day shall make every effort to ensure that Race Committee is notified that they have dropped out
- 15.3 All competitors are required to conform with the U.S. Coast Guard regulations and the RRS concerning personal floatation devices and other required equipment.
- 15.4 Boats shall not impede the passage of a vessel which can safely navigate only within a narrow channel, and give way to commercial fishing vessels while fishing or vessels with restricted ability to maneuver.
- 15.5 In accordance with Rule 42.3(h), providing no significant advantage is gained, a boat may employ propulsion using an engine or other method to remain clear of or not impede the

passage of a non-racing vessel when required by Inland Rules.

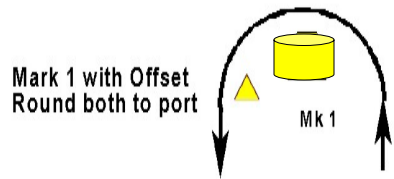
16 SCORING

The Low Point Scoring System of appendix A will apply. PHRF classes will be scored PHRF time on distance. Open classes will be scored in accordance with the Portsmouth Yardstick (HC) System. One race must be completed to constitute a series. A boat's series score will be the total of her race scores. If more than 6 races are completed her worst score will be discarded.

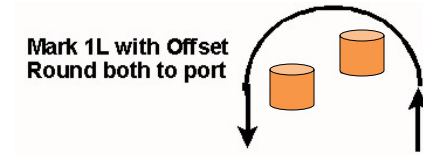
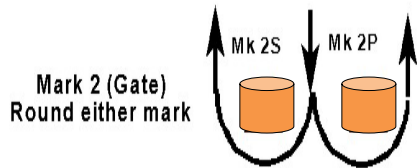
17 PRIZES

First, second, and third place prizes will be awarded in classes of more than five finishing yachts. First and second place prizes will be awarded in classes of four to five finishing yachts. A first place prize will be awarded in classes of three or less finishing yachts. One design prizes will be awarded on Sunday 18March.

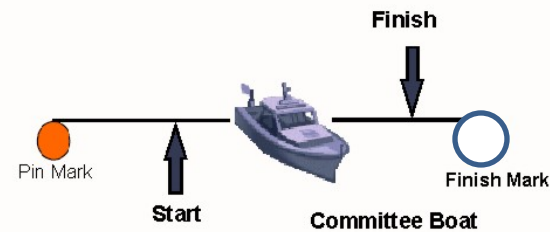
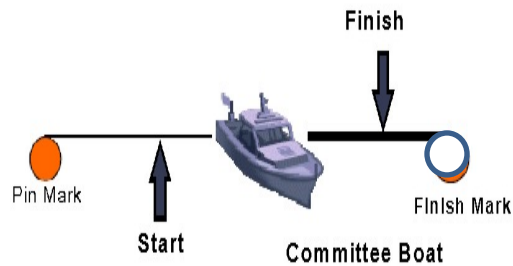
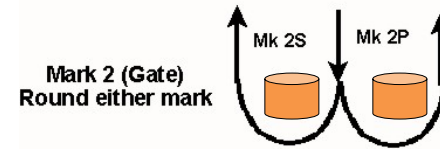
River City 2012 Round –the-Buoy Courses (Attachment A)



Not to Scale



Not to Scale



Windward Leeward Short

Windward Leeward Long

WS

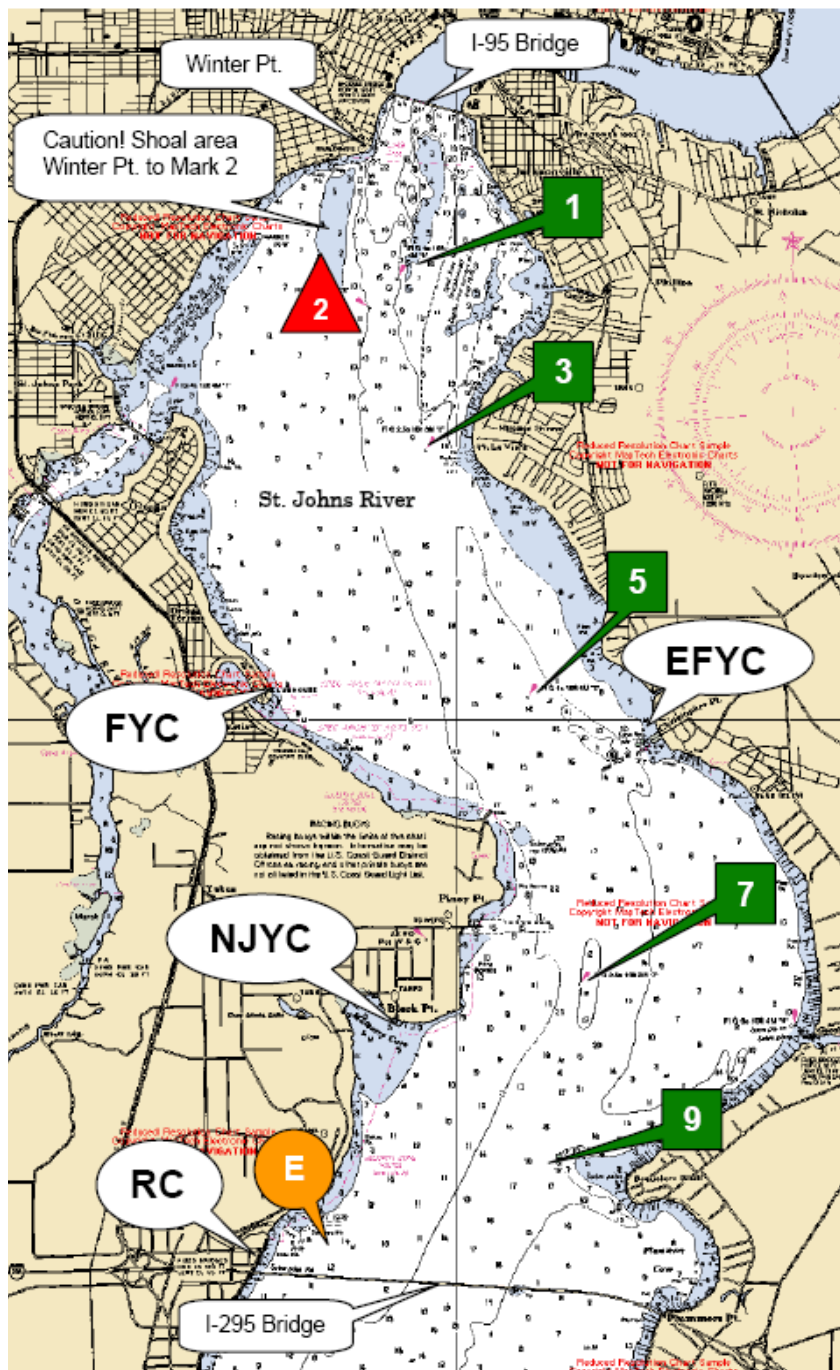
WL

Course Start, 1, 2P or 2S, 1, Finish

Course Start, 1L, 2P or 2S, 1L, Finish

Attachment A NOTE: Offset marks and gates are optional.

Attachment B



Race Marks		Range and Bearing between I		Range n.m.	Bearing Mag.
GPS Position	From	To			
1	N30° 17.798' W81° 40.440'	E	7	2.3	048°
		E	9	1.5	073°
3	N30° 16.723' W81° 40.219'	1	3	1.1	175°
		1	5	2.8	168°
5	N30° 15.013' W81° 39.470'	3	1	1.1	355°
		3	5	1.7	163°
		3	7	3.7	169°
7	N30° 13.312' W81° 39.078'	5	1	2.8	348°
		5	3	1.7	343°
		5	7	1.9	175°
		5	9	2.9	181°
9	N30° 12.272' W81° 39.241'	7	E	2.3	229°
		7	1	4.6	350°
		7	3	3.6	349°
		7	5	1.9	355°
		7	9	1.1	193°
E	N30° 11.700' W81° 40.900'	9	E	1.5	253°
		9	5	2.9	001°
		9	7	1.1	013°

Inflated yellow cylinder