



Navy Jacksonville Yacht Club

P.O. Box 29, Naval Air Station Jacksonville, FL 32212-0029. (904)778-0805

WAVES REGATTA

Saturday, May 14th, 2011

NOTICE OF RACE

1. RULES

1.1 The regatta will be governed by the rules as defined in *The Racing Rules of Sailing* (RRS) 2009-2012, The Prescriptions of US SAILING and by the Sailing Instructions. First Coast Sailing Association (FCSA) and Northeast Florida Women's Sailing Network (WSN) rules shall also apply.

2. ELIGIBILITY AND ENTRY

2.1 Spinnaker and non-spinnaker class vessels must have all female crews. Cruiser class vessels may have up to 50% male crew but must be helmed by a female from the preparatory signal of her class until she finishes. No male shall touch the helm while racing.

2.2 All boats must have a PHRF rating issued by the FCSA or WSN and may be entered for this event by completing the FCSA Standard Entry Form in advance, or during registration on race day. Mail advance entries to the Navy Jacksonville Yacht Club.

3. SCHEDULE

3.1 0930-1100 Registration at Navy Jacksonville Yacht Club

1100 Skippers Meeting

1200 Warning signal for first class

ASAP Awards presentation at the end of races.

4. FEES

4.1 \$30. Make checks payable to Navy Jacksonville Yacht Club.

5. SAILING INSTRUCTIONS

5.1 The sailing instructions will be available at the Skippers Meeting. Changes to this notice or the Sailing Instructions will be posted on the exterior bulletin board by 1000 hrs on race day.

6. VENUE

6.1 The racing area will be in the St. Johns River as depicted on NOAA Chart 11492 between the Buckman Bridge to the south and the Fuller Warren Bridge to the north.

7. THE COURSE

7.1 The course to be sailed will be provided at the Skippers Meeting on race day.

8. PENALTY SYSTEM

8.1 The one and two turn penalty shall apply in accordance with RRS 44.1 and 44.2.

9. SCORING

9.1 The Low-point Scoring System, Appendix A, Rule A4.1 of the racing rules, will apply.

9.2 **This is race #1 in the 2011 WSN Series.** Results will be posted at NJYC after the race and will be forwarded to the FCSA for scoring and for official posting on the website @ www.sailjax.com.

10. PRIZES

10.1 1st, 2nd, and 3rd place awards will be presented for all participating classes.

11. BASE PASSES

11.1 A representative from NJYC will be at the main gate 9:30 to 10:30 a.m. on the day of the race to help with base entrance. All persons entering the base must have a picture ID. All vehicles must have and provide proof of current registration and insurance.

12. INFORMATION

12.1 Point of contacts: Spencer Wait, Cell: 860-3796, or Lynn Quick, Cell: 403-2817.

12.2 Vessels are asked to contact the dock master when approaching the outer dock for berthing assistance. Please monitor channel 68 for the duration of this event.



2011 WAVES Regatta

Navy Jacksonville Yacht Club

Saturday May 14th, 2011

SAILING INSTRUCTIONS

1. RULES

1.1 The regatta will be governed by the rules as defined in the Racing Rules of Sailing (RRS) 2009-2012, the First Coast Sailing Association (FCSA) regulations, the Northeast Florida Women's Sailing Network (WSN) regulations, and these sailing instructions.

2. MANAGEMENT

2.1 This race will be under the management of the Navy Jacksonville Yacht Club (NJYC), which is also the organizing authority.

3. ELIGIBILITY

3.1 The race is open to all yachts with a valid PHRF certificate from the FCSA.

4. REGISTRATION and ENTRY FEE

4.1 Competitors may enter at any time prior to race day by delivering or mailing a completed First Coast Sailing Association (FCSA) Standard Entry Form along with the \$30 entry fee to:

Navy Jacksonville Yacht Club
Attention: Race Committee
PO Box 29
Naval Air Station
Jacksonville FL 32212-0029

4.2 Competitors may also register at Navy Jacksonville Yacht Club (NJYC) on race day from 0900-1100.

5. NOTICES TO COMPETITORS

5.1 Notices to competitors will be posted on the official notice board located on the south wall of NJYC facing the river (next to the sliding glass doors).

6. SIGNALS MADE ASHORE

6.1 Any signals made ashore will be displayed from the flagpole located on the south lawn of NJYC.

7. SCHEDULE, CLASSES, AND FLAGS

7.1 A competitors' meeting will be held at 1100 on Saturday, May 14th, 2011 at NJYC. The warning signal for the first start will be at 1200 or as soon as possible thereafter (allowing for preparation of the course). Warning signals for subsequent starts will be given after each boat from the first start is either across the starting line, or has been scored DNS.

7.2 The regatta shall be contested in the PHRF Spinnaker (all female crew), Non-Spinnaker (all female crew), and Mixed Cruiser (50% female crew) classes in accordance with the Performance Handicap Racing Fleet (PHRF), rules of the FCSA and the WSN guidelines.

7.3 For Mixed Cruiser Class vessels, the boat must be helmed by a female from the preparatory signal of her class until she finishes. No male shall touch the helm while racing.

7.4 The class flag for the first start of the day will be the numeral 1; the class flag for the second start of the day will be the numeral 2; the class flag for the third start will be the numeral 3. The Spinnaker Fleet will start first; the Non-spinnaker Fleet will start second; the Cruiser Fleet will start third. The Preparatory Flag will be "P" for all starts. Starts may be combined at the discretion of the PRO depending on the number of vessels competing.

8. RACING AREA

8.1 The racing area will be in the St. Johns River as depicted on NOAA Chart 11492 between the Buckman Bridge to the south and the Fuller Warren Bridge to the north.

9. COURSES and MARKS

9.1 The course will be created by the Principal Race Officer (PRO) on race day using a combination of government navigation markers and inflatable markers. The course description will be displayed on the official notice board, on the white board at the Skippers' meeting, and on a white board on the Committee Boat.

10. STARTING AND FINISHING LINES; STARTING SYSTEM

10.1 The starting and finishing line will be the same line for this race unless the course is changed or shortened by the Principle Race Officer (PRO), and will be a straight line leading from an orange flag on the port side of the Committee Boat to either an inflatable yellow race marker or a designated government navigation marker.

10.2 The starting signals will be as described in Part 3, Rule 26 of the Racing Rules.

11. TIME LIMIT

11.1 Yachts failing to cross the finish line within 90 minutes after the first boat to finish in their class shall be scored DNF (modification of Rule 35); boats failing to cross the start line within 20 minutes of their start signal will be scored DNS.

12. PROTESTS

12.1 Protests shall be delivered to the Race Committee at NJYC within 30 minutes from the time the Committee Boat is docked at Mulberry Cove Marina. Hearings will be held as soon as possible after racing in the approximate order in which they were filed.

13. SCORING

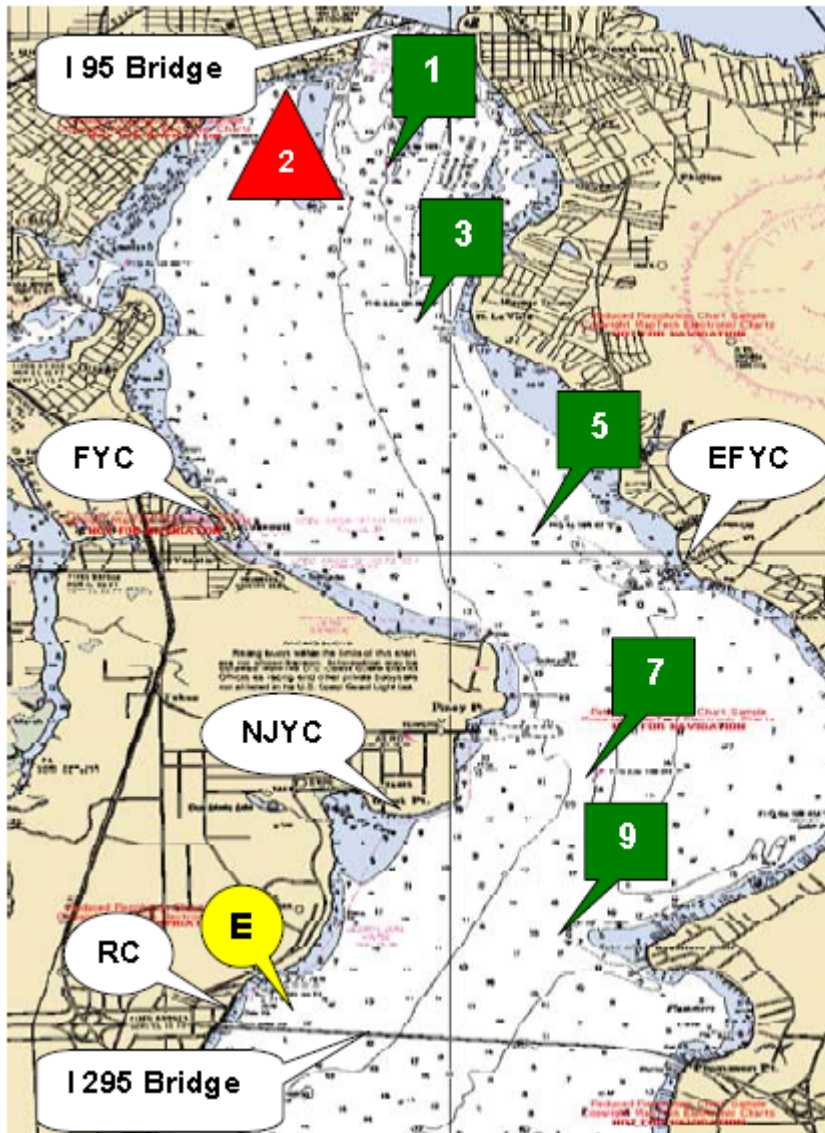
13.1 One race is scheduled for each class. Prizes will be awarded for 1st, 2nd, and 3rd place in all 3 classes; presentation will take place after the Race Committee has posted the race results in the official display case at NJYC.

14. ADDITIONAL INFORMATION

14.1 The Race Committee will monitor Marine VHF channel 68. The Race Committee requests that all racing vessels check in with the race committee by radio, and inform the Race Committee when retiring.

14.2 As a condition of participation all members of the crew, guests and owners of the vessels participating assume all risks of accident and agree that Navy Jacksonville Yacht Club and First Coast Sailing Association shall not be liable, under any circumstance, for loss or injury to participants or others, or the loss or damage to any yacht and shall hold Navy Jacksonville Yacht Club and the First Coast Sailing Association free and harmless from and against any and all losses, costs, damages, attorney fees and liability of any kind or nature whatsoever growing out of or resulting from participation in the race.

Sample River Chart with Marker Locations



River Mark G1
N30° 17.798'
W081° 40.440'

River Mark G3
N30° 16.723'
W081° 40.219'

River Mark G5
N30° 15.013'
W081° 39.470'

River Mark G7
N30° 13.312'
W081° 39.078'

River Mark G9
N30° 12.272'
W081° 39.241'

FCSA Mark "E"
N30° 11.700'
W081° 40.900'