



St. Augustine Yacht Club
Founded 1873

2011 Wednesday Night Race Series

This year the St. Augustine Yacht Club will be hosting three series of Wednesday Night Races, with five races in each series. Races are open to anyone interested in fun and friendly competition on the water. Enclosed please find Notice of Race, Race Instructions and a Registration Form for boats not already listed in the fleet.

The club will host a post race happy hour after each race. All racers and crew are welcome.

For more information please contact:

Jennifer Mouhalis

(904) 501-5079 Mobile
sailing@SAYC2000.com



Wednesday Night Race – 2011 Notice of Race

1. Rules Races will be governed by The Racing Rules of Sailing (RRS); the prescriptions of the United States Sailing Association, and by these sailing instructions.

2. Eligibility All sailboats. Everyone should try to pre-register (fill out race form), but feel free to show up the night of a race and check in on channel 72. All boats should have a current PHRF rating issued by the First Coast Sailing Association. (See Sailjax.com for forms). Boats without a rating from FCSA will be issued a provisional rating by SAYC.

3. Schedule The race series will consist of three series of 5 races scheduled as follows:

March Series

Race #1 Mar 2nd
Race #2 Mar 16th
Race #3 Apr 13th
Race #4 Apr 27th
Race #5 May 11th

Summer Series

Race #1 May 25th
Race #2 Jun 8th
Race #3 Jun 22nd
Race #4 Jul 13th
Race #5 Jul 27th

Fall Series

Race #1 Aug 10th
Race #2 Aug 24th
Race #3 Sep 7th
Race #4 Sep 21st
Race #5 Oct 5th

4. Registration Boats already in the fleet may register on the SAYC website (SAYC2000.com). Boats not listed in the fleet on the SAYC website may register in advance by completing the attached Entry Form/Waiver and sending it to the address listed on the form.

5. Fees Entry Fee for each series is \$30 per boat. Entry fee check made out to the St. Augustine Yacht Club should be sent to St Augustine Yacht Club, 442 Ocean Vista Ave., St. Augustine, FL 32080. SAYC members may elect to charge the Entry Fee to their account.

6. Instructions See attached sailing instructions.

7. Fleets **Spring series:** Boats register to race in one of two PHRF fleets: 'Cruising Fleet' (flying code flag 6) or 'Performance Fleet' (flying code flag 5). Performance Fleet boats may fly a spinnaker and will be charged 15 seconds per mile. No spinnakers may be flown in Cruising Fleet.

8. Scoring Boats will be scored for each race. The series winner will be the boat with the fewest points using their best four finishes and at least four scores. Points will be awarded as follows:

First Place 1 pts
Second Place 2 pts
Third Place 3 pts
Etc.

All non-finishers (DNF, DNC, DSQ) will not be scored.

9. Prizes Trophies will be awarded for first, second and third for each race series in both fleets.



Wednesday Night Race - Sailing Instructions (March Series)

Boats will race in two PHRF fleets. The Cruising Fleet will consist largely of heavier displacement cruising type boats with higher PHRFs and/or less experienced crew. The Performance Fleet will generally include faster boats with lower PHRFs and/or more experienced crew. **The faster Performance fleet will be required to sail the course twice, and the Cruising fleet once.** Boats in the Performance Fleet can elect to fly a spinnaker with a 15 second/mile penalty.

March Series Wednesday Night Races will be sailed on one of two inland courses. The course will be selected the day of the race depending on wind conditions. The races will start at 5:30 pm sharp for Performance Fleet and 10 minutes later for Cruising Fleet, except for the two races in March which will start at 4:30 pm sharp and the two races in April which will start at 5:00 pm sharp. All races will use the following start sequence. The timing of the start is determined by the removal of the class flags (Time pieces and watches are relative). Sounds are secondary and may fail. The Race Committee can delay start times, combine fleets, or separate fleets at its discretion.

<i>5 minutes before the start</i>	<i>Class Flags Raised</i>	<i>Performance= Code flag 5 Cruising= Code flag 6</i>	<i>Horn Sound</i>
<i>4 minutes before the start</i>	<i>Preparatory Signal</i>	<i>“P” Flag raised (Blue with white square)</i>	<i>Horn Sound</i>
<i>1 minute before the start</i>		<i>“P” Flag Removed</i>	<i>Long Horn Sound</i>
<i>0 time</i>	<i>The Start</i>	<i>Class Flags Removed</i>	<i>Horn Sound</i>

All sailors must check in with the committee boat at least 15 minutes before the start on VHF channel 72 or by passing by the Committee boat and hailing. Election to fly a spinnaker (Performance Fleet only) can be made at any time during the race. The race committee will monitor channel 72 and can provide race information up until the class flags are raised.

Course-A runs north-south beginning just north of the Vilano Beach Bridge and extending about 1.3 miles north on the ICW to a mark set off Boating Club Road and back to the start. This course will be used primarily when the winds are easterly or westerly.

Course-B runs east-west beginning 0.3 miles north of the Bridge of Lions and extending about 1.3 miles eastward to Red Buoy # 8 near the mouth of the St. Augustine Inlet. This course will be used primarily when the winds are northerly or southerly.

Courses may be shortened if conditions require it. The 720 Degree Turn Rule will be in effect (rule 44.1 and 44.2).

The following flags may be flown by the committee boat:

Postponement:	rectangular pennant with red and white stripes
General Recall:	yellow pennant outlined in blue
Individual Recall:	white square with a blue cross
Shorten Course:	a white square with a blue square in its center
Come Within Hail:	Code Flag L, yellow and black squares

These races are intended to be a fun and friendly event, so protests are strongly discouraged. Varying boats with captains and crew of differing skill levels will be racing in close quarters so everyone is asked to be courteous and give spacing where needed. The Racing Rules of Sailing should be adhered to at all times.

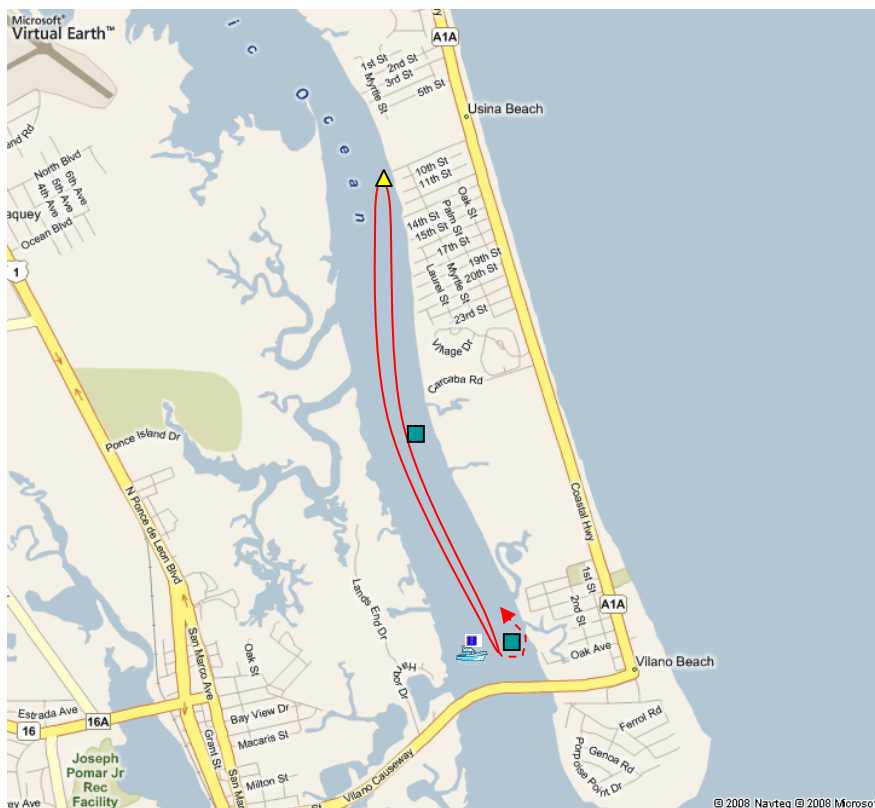
St Augustine Yacht Club 2010 Wednesday Night Race Courses (March Series)

Course A

North from Day Mark 57
to a buoy set off Boating
Club Road & back (2.6
NM)

Cruising 1X
Performance 2X

Leave marks on the left



Course B

East from line North of
the Bridge of Lions to Red
Buoy # 8 in the Inlet &
back (2.6 NM)

Cruising 1X
Performance 2X

Leave marks on the left



**ST AUGUSTINE YACHT CLUB
YACHT RACING ENTRY FORM**

-
-
RACE: Wednesday Night March Series DATE: _____
-
-

YACHT NAME: _____ SAIL #: _____

YACHT MAKE/MODEL: _____ LENGTH: _____ COLOR: _____

PHRF RATING: _____ US SAILING MEMBER # _____

FLEET: _____ (CRUISE FLEET or PERFORMANCE FLEET)

OWNER'S NAME: _____ PHONE: _____

SKIPPER'S NAME: _____ PHONE: _____

CELL PHONE: _____ FAX: _____

EMAIL: _____

MAILING ADDRESS WITH ZIP: _____

EMERGENCY CONTACT: _____ PHONE: _____

VESSEL NORMALLY DOCKED AT: _____

The undersigned, for and on behalf of himself/herself, his/her guests, and the members of the crew of his/her yacht, hereby assumes all risk of accident and expressly agrees that the St. Augustine Yacht Club shall not be liable, under any circumstance, for any loss or injury to participants or others or the loss or damage to any yacht. The undersigned further agrees to indemnify and does hereby indemnify and hold the St. Augustine Yacht Club free and harmless under, from and against any and all losses, costs, damages, attorney's fees and liability of any kind or nature whatsoever growing out of or resulting from participation in any SAYC sponsored race.

SIGNED: _____ DATE: _____

Mail to: Jennifer Mouhalis
 c/o St. Augustine Yacht Club
 442 Ocean Vista Avenue
 St. Augustine, Florida 32080