



Navy Jacksonville Yacht Club

P.O. Box 29, Naval Air Station

Jacksonville, FL 32212-0029

904 778-0805

Navy Day Regatta

Fall Series 2010 Race #3

Saturday, October 16th, 2010

NOTICE OF RACE

1. RULES

- 1.1 The regatta will be governed by the rules as defined in *The Racing Rules of Sailing* (RRS) 2009-2012, the prescriptions of US SAILING and by the Sailing Instructions.

2. ELIGIBILITY AND ENTRY

- 2.1 PHRF Spinnaker, Non-Spinnaker, and Cruiser classes.
2.2 All boats competing in PHRF classes must have a valid PHRF rating.
2.3 There will be no One Design course for this event.
2.4 Eligible boats may enter by completing the FCSA Standard Entry Form copy found on www.sailjax.com or fill out race day at the club. Advance registration forms can be mailed with entry fee to:

Navy Jacksonville Yacht Club
PO Box 29
Naval Air Station
Jacksonville FL 32212-0029

3. SCHEDULE

- 3.1 0930-1100 Registration
 1100 Skippers Meeting
 1200 Warning signal for first start
 ASAP Awards presentation at the end of races.

4. FEES

- 4.1 Entry fee for this regatta is \$30.

5. SAILING INSTRUCTIONS

- 5.1 The sailing instructions will be available at 0930 on race day. Changes to this notice or the Sailing Instructions will be posted on the exterior bulletin board by 1000 on race day.
- 5.2 NJYC and the Race Committees will monitor Marine Channel 68 (72 is the back up frequency)

6. VENUE

- 6.1 The PHRF racing area will be in the St. Johns River as depicted on NOAA Chart 11492 between the Buckman Bridge to the south and the Fuller Warren Bridge to the north.

7. THE COURSES

- 7.1 The course to be sailed will be determined by the Principal Race Officer on race day, and will be displayed at the Skippers Meeting.

8. PENALTY SYSTEM

- 8.1 A one or two 360 degree turns penalty will be used as specified in Rule 44.1 and 44.2.

9. SCORING

- 9.1 The Low-point Scoring System, Appendix A, Rule A4.1 of the racing rules, will apply for this regatta.
- 9.2 Results will be posted at NJYC and on www.sailjax.com.

10. PRIZES

- 10.1 First, second and third place prizes will be awarded in all classes. All competitors will be scored in their respective class. This is the third race of the 2010 FCSA Fall Series.

11 SAFETY

- 11.1 All competitors are required to conform to the U.S. Coast Guard regulations and the RRS concerning personal floatation devices and other required equipment. All yachts are reminded that under fundamental Rule 4 "A boat is solely responsible for deciding whether or not to start or to continue racing."
- 11.2 Yachts shall not impede the passage of a vessel that can safely navigate only within a narrow channel or commercial fishing vessels while fishing or vessels with restricted ability to maneuver. Racing yachts interfering with such vessels are subject to protest by the Race Committee or contestants and possible disqualification.

12. BASE PASSES

- 12.1 Representatives from NJYC will be at the Yorktown Gate (main gate) from 8:30 to 10:30 am on the day of the race to help with base entrance. All persons entering the base must have a picture ID. All vehicles must have and provide proof of current registration and insurance.

13. INFORMATION

- 13.1 Low cost breakfast and refreshments will be served during registration at NJYC.
- 13.3 Social and awards after the race with low price food and soft drinks available. Docking is available on the southern face of F Dock. F Dock is the first dock as you approach Mulberry Cove Marina from the east, or as directed by the Dock Master.
- 13.4 Point of contact: NJYC phone 904-778-0805, Steve Duve 904-565-9883.



Navy Day Regatta

Navy Jacksonville Yacht Club

Saturday October 16th, 2010

PHRF FLEET SAILING INSTRUCTIONS

1. RULES

The regatta will be governed by the rules as defined in *The Racing Rules of Sailing 2009 – 2012* (hereafter referred to as the Racing Rules), and the *Performance Handicap Racing Fleet (PHRF) Regulations* of the First Coast Sailing Association (FCSA).

2. ENTRIES

Competitors may enter at any time prior to race day by delivering or mailing a completed First Coast Sailing Association (FCSA) Standard Entry Form along with the \$30 entry fee to:

Navy Jacksonville Yacht Club
Attention: Race Committee
PO Box 29
Naval Air Station
Jacksonville FL 32212-0029

Competitors may also register at Navy Jacksonville Yacht Club (NJYC) on race day from 0900-1030.

3. NOTICES TO COMPETITORS

Notices to competitors will be posted on the official notice board located on the south wall of NJYC facing the river (next to the sliding glass doors).

4. SIGNALS MADE ASHORE

Any signals made ashore will be displayed from the flagpole located on the south lawn of NJYC.

5. SCHEDULE and CLASS FLAGS

A Skippers' meeting will be held at 1100 on Saturday, October 16th, 2010 at NJYC. The warning signal for the first start will be at 1200 or as soon as possible thereafter (allowing for preparation of the course). The warning signal for the second start will be given after each boat from the first start is either across the starting line, or has been scored DNS.

The class flag for the first start of the day will be the numeral 1; the class flag for the second start of the day will be the numeral 2. The Spinnaker Fleet will normally start first; the Non-spinnaker and Cruiser classes will normally start second together. If a third start is required, its class flag will be the numeral 3.

6. RACING AREA

The racing area will be in the St. Johns River as depicted on NOAA Chart 11492 between the Buckman Bridge to the south and the Fuller Warren Bridge to the north.

7. COURSES and MARKS

The course will be created by the Principal Race Officer (PRO) on race day using a combination of government navigation markers and inflatable markers. The course description will be displayed on the official notice board, on the white board at the Skippers' meeting, and on a white board on the Committee Boat.

8. STARTING AND FINISHING LINES; STARTING SYSTEM

The starting and finishing line will be the same line for this race (unless the course is changed or shortened by the PRO), and will be a straight line leading from an orange flag on the port side of the Committee Boat to either an inflatable yellow race marker or a designated government navigation marker.

The starting signals will be as described in Part 3, Rule 26 of the Racing Rules.

9. TIME LIMIT

Yachts failing to cross the finish line within 60 minutes after the first boat to finish in their class shall be scored DNF (modification of Rule 35); boats failing to cross the start line within 15 minutes of their start signal will be scored DNS.

10. PROTESTS

Protests shall be delivered to the Race Committee at NJYC within 30 minutes from the time the Committee Boat is docked at Mulberry Cove Marina. The protest time limit and a list of protests received will be posted on the official notice board. Hearings will be held as soon as possible after racing in the approximate order in which they were filed.

11. SCORING

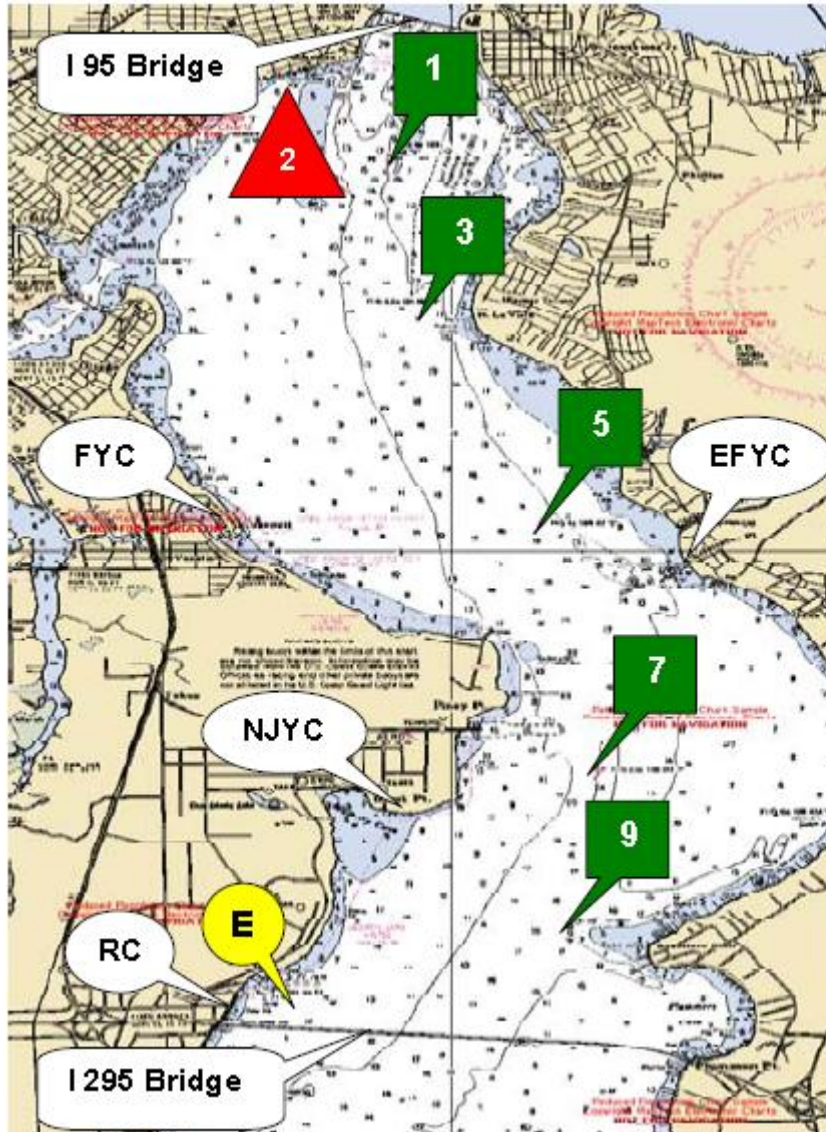
One race is scheduled for each class. This is race #3 of the FCSA 2010 Fall Series; finishing scores will be calculated into the series standings by FCSA.

Prizes will be awarded for 1st, 2nd, and 3rd place in all 3 classes; presentation will take place after the Race Committee has posted the official results in the official display case at NJYC.

12. ADDITIONAL INFORMATION

The Race Committee will monitor Marine VHF channel 68. The Race Committee requests that all racing vessels check in with the race committee by radio prior to starting, and inform the Race Committee when retiring.

Sample River Chart with Marker Locations



River Mark G1
N30° 17.798'
W081° 40.440'

River Mark G3
N30° 16.723'
W081° 40.219'

River Mark G5
N30° 15.013'
W081° 39.470'

River Mark G7
N30° 13.312'
W081° 39.078'

River Mark G9
N30° 12.272'
W081° 39.241'

FCSA Mark "E"
N30° 11.700'
W081° 40.900'