



Race of the Century

Sunday, May 30, 2010

Notice of Race

- 1. Rules** Races will be governed by The Racing Rules of Sailing (RRS); the prescriptions of the United States Sailing Association, and by these sailing instructions.
- 2. Eligibility** All sailboats. All boats should have PHRF ratings issued by the First Coast Sailing Association. (See Sailjax.com for forms). Boats without ratings from FCSA will be issued a provisional rating by SAYC.
- 3. Registration** Boats may register on the SAYC website (SAYC2000.com). Boats not listed in the fleet on the SAYC website may also register by completing the Entry Form/Waiver and emailing it to margogeer@aug.com. Everyone should try to pre-register, but feel free to show up the day of the race at the Skippers Meeting to sign up. The Skipper's Meeting will be held at 10 AM on the day of the race at the SAYC clubhouse, for final Registration and final Sailing Instructions.
- 4. Fees** Entry Fee is \$25 per boat. Entry fee check made out to the St. Augustine Yacht Club should be sent to St Augustine Yacht Club, 442 Ocean Vista Ave., St. Augustine, FL 32080. Please note on the check that is for "Commodore's Cup Race". SAYC members may elect to charge the Entry Fee to their account.
- 5. Instructions** See attached sailing instructions.
- 6. Fleets** Boats register to race in one of two PHRF fleets: 'Cruising Fleet' (flying code flag 6) or 'Performance Fleet' (flying code flag 5). Performance Fleet boats may fly a spinnaker and will have the FCSA Adjusted Rating, otherwise will have the FCSA Non-Spinnaker Rating. No spinnakers may be flown in Cruising Fleet.
- 7. Prizes** Trophies will be awarded for first, second and third for both classes.
- 8. After Race Award Party** Captains and crew are invited to the St. Augustine Yacht Club. Cocktails at 5 pm and dinner at 6 pm. (\$20 per person, half price for children under 10 years of age, advance registration for dinner requested.)



Race of the Century Sailing Instructions – May 30, 2010

The course is intended to be a triangle course offshore, with the Cruising Class sailing around the triangle to finish, and the Performance Class (Spinnaker and Non-Spinnaker) sailing around the triangle and then doing an extra leg to the first windward mark (Mark A) and back to the finish line. Distance for Cruising Class of the Short Course is 4.8 NM, and the Long Course is 6.0 NM. Distance for Performance Class of the Short Course is 8.8 NM, and the Long Course is 11.0 NM. Starting and finishing line will be between the Committee Boat and Mark C. The first leg will be from the starting line to Mark A, the second leg to Mark B. All turning marks should be left to port. Location of marks is as shown on the attached tables. The Committee Boat will display a placard with the designated course, followed by the letter L for Long Course or the letter S for Short Course.

In the event of hazardous conditions on the ocean or in the inlet an alternative course in the ICW will be announced at the Skippers Meeting.

There will be two five minute starting sequences. The Performance Fleet (Spinnaker and Non-Spinnaker) will start at 1:00 pm sharp. After a five minute pause, the starting sequence for the Cruising Fleet will begin, and the Cruising Fleet will start at 1:10 pm. The Race Committee may consolidate both fleets to one start at its discretion, and will announce any change at the Skipper's Meeting or on VHF channel 72 prior to the time the first class flag is raised. Both fleets will use the following start sequence. The timing of the start is determined by the removal of the class flags (time pieces and watches are relative). Sounds are secondary and may fail.

5 minutes before the start *Class Flag Raised* *Performance= Code flag 5* *Horn Sound*
Cruising= Code flag 6

4 minutes before the start *Preparatory Signal* *White Flag raised* *Horn Sound*

1 minute before the start *White Flag Removed* *Long Horn Sound*

0 time The Start *Class Flag Removed* *Horn Sound*

All sailors must check in with the committee boat by 12:45 pm on VHF channel 72 or by passing by the Committee Boat and hailing. The race committee will monitor channel 72 and can provide race information, including any changes to these Race Instructions, up until the class flags are raised.

The 720 Degree Turn Rule will be in effect in accordance with rule 44.1 and 44.2.

Cruising Class yachts may be sailed with the assistance of self-steering gear, electric or wind (modifies RRS 52).

The following flags may be flown by the committee boat:

Postponement:	rectangular pennant with red and white stripes
General Recall:	yellow pennant outlined in blue
Individual Recall:	white square with a blue cross
Shorten Course:	a white square with a blue square in its center
Come Within Hail:	Code Flag L, yellow and black squares

These races are intended to be a fun and friendly event, so protests are strongly discouraged. Varying boats with captains and crew of differing skill levels will be racing in close quarters so everyone is asked to be courteous and give spacing where needed. The Racing Rules of Sailing should be adhered to at all times.

Short Courses (First Leg 2.0 NM)

Course ID	Wind (True)	Position A	Position B	Position C	Bearing C-A	A-B	B-C	A-C	CB - C
A	NNW	N 29° 57.27' W 81° 16.17'	N 29° 55.95' W 81° 16.81'	N 29° 55.45' W 81° 15.22'	342 m	209 m	119 m	164 m	052 m
B	N	N 29° 57.45' W 81° 15.22'	N 29° 56.42' W 81° 16.39'	N 29° 55.45' W 81° 15.22'	006 m	231 m	141 m	187 m	074 m
C	NNE	N 29° 57.29' W 81° 14.32'	N 29° 56.76' W 81° 15.81'	N 29° 55.45' W 81° 15.22'	29 m	254 m	164 m	209 m	96 m
D	NE	N 29° 56.87' W 81° 13.60'	N 29° 56.87' W 81° 15.22'	N 29° 55.45' W 81° 15.22'	51 m	276 m	187 m	231 m	119 m
E	ENE	N 29° 56.21' W 81° 13.10'	N 29° 56.73' W 81° 14.60'	N 29° 55.45' W 81° 15.22'	074 m	298 m	210 m	254 m	142 m
F	E	N 29° 55.45' W 81° 12.92'	N 29° 56.44' W 81° 14.07'	N 29° 55.45' W 81° 15.22'	096 m	321 m	232 m	276 m	164 m
G	ESE	N 29° 53.67' W 81° 13.09'	N 29° 54.96' W 81° 13.71'	N 29° 54.45' W 81° 15.22'	119 m	344 m	255 m	299 m	187 m
H	SE	N 29° 53.04' W 81° 13.59'	N 29° 54.44' W 81° 13.60'	N 29° 54.45' W 81° 15.22'	141 m	006 m	277 m	321 m	209 m
I	SSE	N 29° 52.60' W 81° 14.33'	N 29° 53.87' W 81° 13.74'	N 29° 54.45' W 81° 15.22'	164 m	29 m	300 m	344 m	232 m
J	S	N 29° 52.45' W 81° 15.22'	N 29° 53.47' W 81° 14.06'	N 29° 54.45' W 81° 15.22'	186 m	51 m	322 m	006 m	254 m
K	SSW	N 29° 55.45' W 81° 15.22'	N 29° 56.02' W 81° 13.73'	N 29° 57.31' W 81° 14.35'	209 m	074 m	344 m	029 m	277 m
L	SW	N 29° 55.45' W 81° 15.22'	N 29° 55.45' W 81° 13.60'	N 29° 56.87' W 81° 13.60'	231 m	096 m	007 m	051 m	299 m
M	WSW	N 29° 54.45' W 81° 15.22'	N 29° 53.90' W 81° 13.67'	N 29° 55.21' W 81° 13.10'	253 m	119 m	030 m	073 m	322 m
N	W	N 29° 54.45' W 81° 15.22'	N 29° 53.43' W 81° 14.04'	N 29° 54.45' W 81° 12.92'	275 m	142 m	052 m	095 m	345 m
O	WNW	N 29° 54.45' W 81° 15.22'	N 29° 53.11' W 81° 14.60'	N 29° 53.70' W 81° 13.08'	298 m	164 m	075 m	118 m	007 m
P	NW	N 29° 54.45' W 81° 15.22'	N 29° 53.01' W 81° 15.22'	N 29° 53.01' W 81° 13.56'	321 m	186 m	096 m	141 m	030 m

ABCDEFKL

Shading denotes position 0.5 miles North of STA

GHIJMNOP

Shading denotes position 0.5 miles South of STA

Committee Boat is always at Position C

Cruising 4.8 NM

Performance 8.8 NM

Long Courses (First Leg 2.5 NM)

Course ID	Wind (True)	Position A	Position B	Position C	Bearing C-A	A-B	B-C	A-C	CB - C
A	NNW	N 29° 57.74' W 81° 16.40'	N 29° 56.12' W 81° 17.12'	N 29° 55.45' W 81° 15.22'	342 m	207 m	118 m	164 m	052 m
B	N	N 29° 57.95' W 81° 15.22'	N 29° 56.71' W 81° 16.65'	N 29° 55.45' W 81° 15.22'	006 m	231 m	141 m	187 m	074 m
C	NNE	N 29° 57.76' W 81° 14.10'	N 29° 57.10' W 81° 15.98'	N 29° 55.45' W 81° 15.22'	29 m	254 m	164 m	209 m	96 m
D	NE	N 29° 57.22' W 81° 13.18'	N 29° 57.22' W 81° 15.22'	N 29° 55.45' W 81° 15.22'	51 m	276 m	187 m	231 m	119 m
E	ENE	N 29° 56.40' W 81° 12.56'	N 29° 57.06' W 81° 14.46'	N 29° 55.45' W 81° 15.22'	074 m	298 m	210 m	254 m	142 m
F	E	N 29° 55.45' W 81° 12.33'	N 29° 56.70' W 81° 13.78'	N 29° 55.45' W 81° 15.22'	096 m	321 m	232 m	276 m	164 m
G	ESE	N 29° 53.46' W 81° 12.57'	N 29° 55.11' W 81° 13.33'	N 29° 54.45' W 81° 15.22'	119 m	344 m	255 m	299 m	187 m
H	SE	N 29° 52.68' W 81° 13.17'	N 29° 54.45' W 81° 13.17'	N 29° 54.45' W 81° 15.22'	141 m	006 m	277 m	321 m	209 m
I	SSE	N 29° 52.13' W 81° 14.14'	N 29° 53.77' W 81° 13.34'	N 29° 54.45' W 81° 15.22'	164 m	29 m	300 m	344 m	232 m
J	S	N 29° 51.95' W 81° 15.22'	N 29° 53.19' W 81° 13.77'	N 29° 54.45' W 81° 15.22'	186 m	51 m	322 m	006 m	254 m
K	SSW	N 29° 55.45' W 81° 15.22'	N 29° 56.10' W 81° 13.35'	N 29° 57.75' W 81° 14.08'	209 m	074 m	344 m	029 m	277 m
L	SW	N 29° 55.45' W 81° 15.22'	N 29° 55.45' W 81° 13.18'	N 29° 57.22' W 81° 13.18'	231 m	096 m	007 m	051 m	299 m
M	WSW	N 29° 54.45' W 81° 15.22'	N 29° 53.77' W 81° 13.36'	N 29° 55.41' W 81° 12.56'	253 m	119 m	030 m	073 m	322 m
N	W	N 29° 54.45' W 81° 15.22'	N 29° 53.17' W 81° 13.76'	N 29° 54.45' W 81° 12.33'	275 m	142 m	052 m	095 m	345 m
O	WNW	N 29° 54.45' W 81° 15.22'	N 29° 52.79' W 81° 14.39'	N 29° 53.52' W 81° 12.53'	298 m	164 m	075 m	118 m	007 m
P	NW	N 29° 54.45' W 81° 15.22'	N 29° 52.69' W 81° 15.22'	N 29° 52.69' W 81° 13.17'	320 m	186 m	097 m	141 m	030 m

ABCDEFKL

Shading denotes position 0.5 miles North of STA

GHIJMNOP

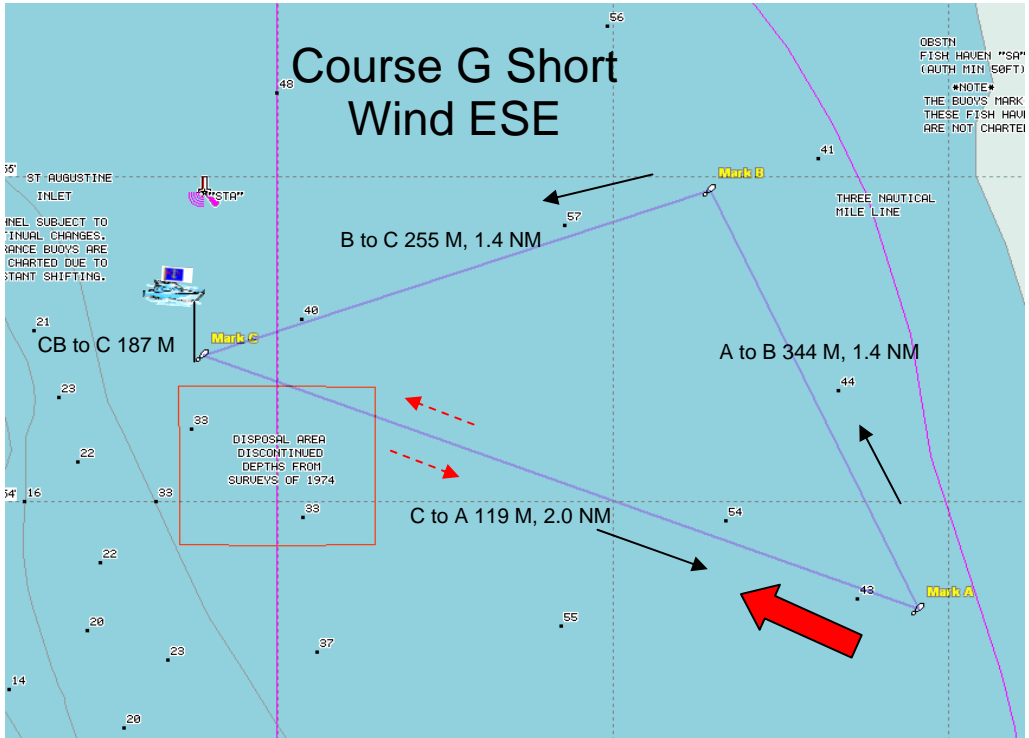
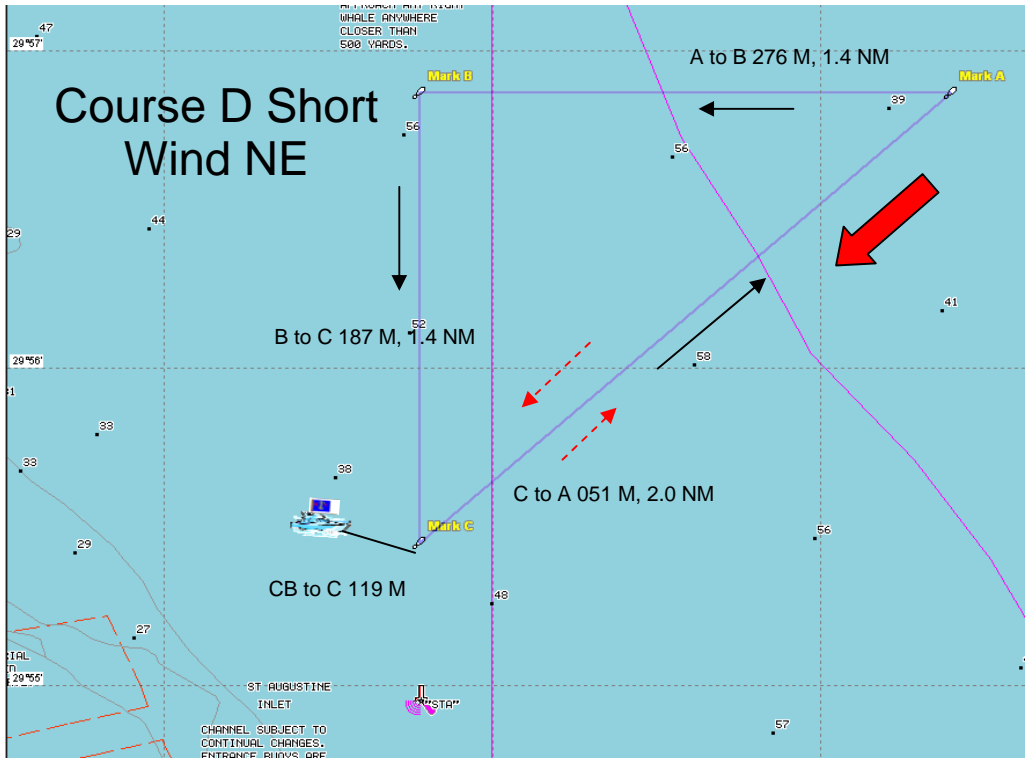
Shading denotes position 0.5 miles South of STA

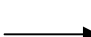


Committee Boat is always at Position C

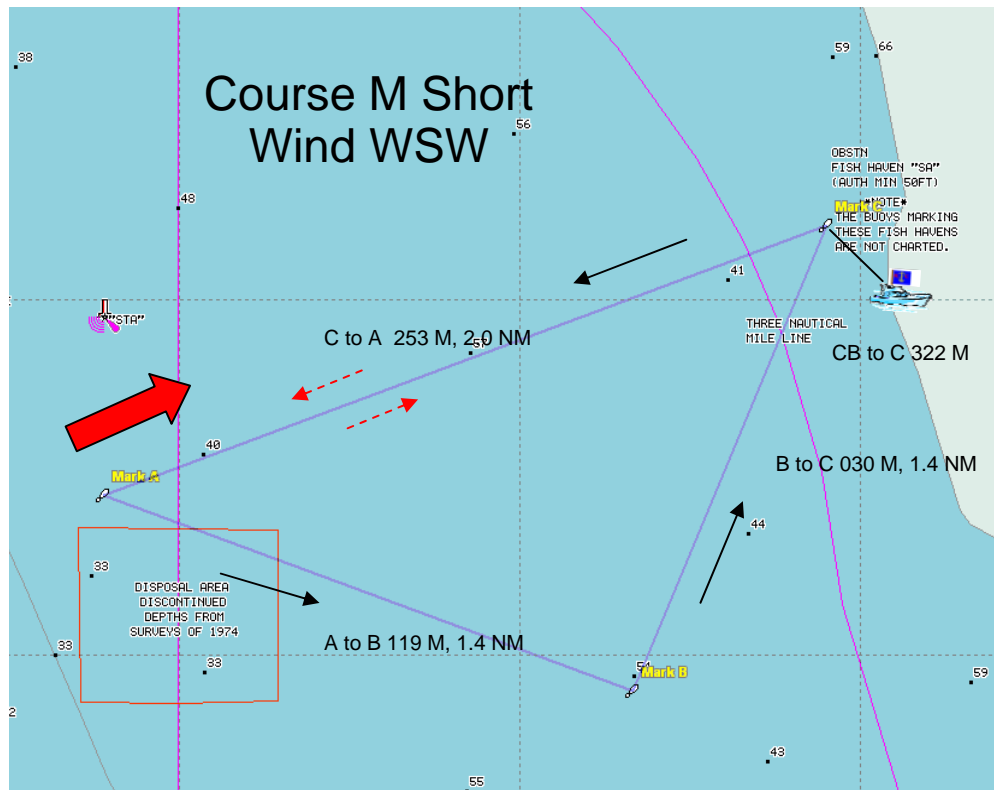
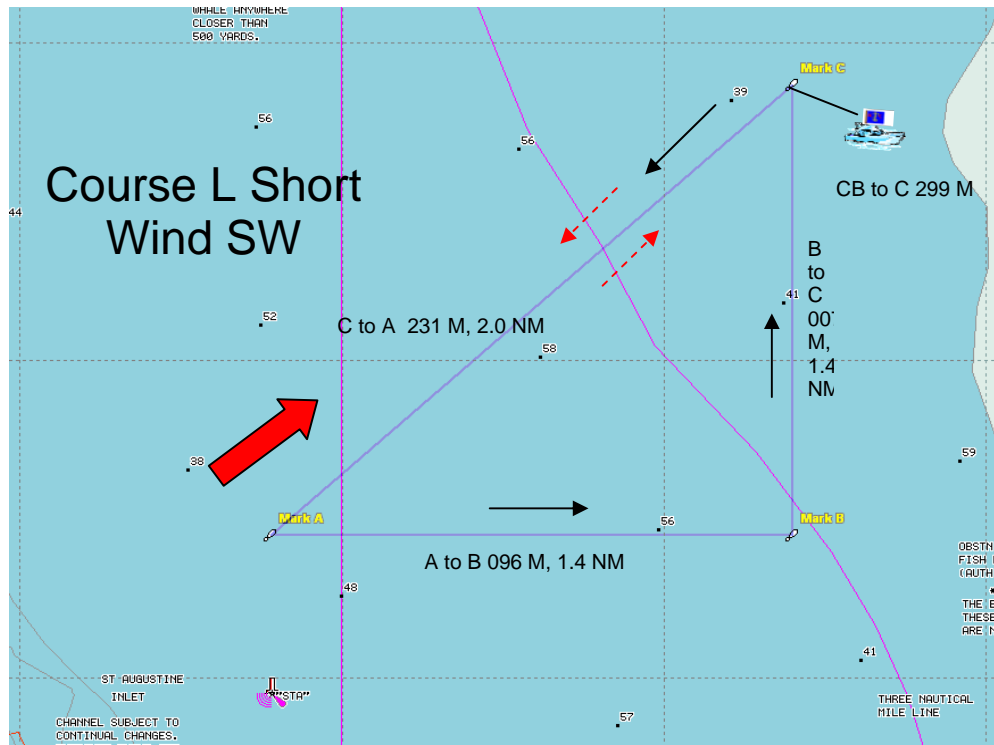
Cruising 6.0 NM




Performance 11.0 NM

Selected Courses shown for example:



-  Course Direction First leg, Performance and Cruising Class
-  Course Direction Second leg, Performance
-  Wind Direction



- 


- Course Direction First leg, Performance and Cruising Class
- Course Direction Second leg, Performance
- Wind Direction

**ST AUGUSTINE YACHT CLUB
YACHT RACING ENTRY FORM**

-
-
RACE: Race of the Century DATE: May 30, 2010
-
-

YACHT NAME: _____ SAIL #: _____

YACHT MAKE/MODEL: _____ LENGTH: _____ COLOR: _____

PHRF RATING: _____ US SAILING MEMBER # _____

FLEET: _____ (CRUISE FLEET or PERFORMANCE FLEET)

OWNER'S NAME: _____ PHONE: _____

SKIPPER'S NAME: _____ PHONE: _____

CELL PHONE: _____ FAX: _____

EMAIL: _____

MAILING ADDRESS WITH ZIP: _____

EMERGENCY CONTACT: _____ PHONE: _____

VESSEL NORMALLY DOCKED AT: _____

The undersigned, for and on behalf of himself/herself, his/her guests, and the members of the crew of his/her yacht, hereby assumes all risk of accident and expressly agrees that the St. Augustine Yacht Club shall not be liable, under any circumstance, for any loss or injury to participants or others or the loss or damage to any yacht. The undersigned further agrees to indemnify and does hereby indemnify and hold the St. Augustine Yacht Club free and harmless under, from and against any and all losses, costs, damages, attorney's fees and liability of any kind or nature whatsoever growing out of or resulting from participation in any SAYC sponsored race.

SIGNED: _____ DATE: _____

Email to: margogeer@aug.com

Mail to: Margo Geer, Rear Commodore for Sail
c/o St. Augustine Yacht Club
442 Ocean Vista Avenue
St. Augustine, Florida 32080