



Navy Jacksonville Yacht Club

P.O. Box 29, Naval Air Station

Jacksonville, FL 32212-0029

904 778-0805

2009 NAVY DAY REGATTA

FCSA Fall Series #3

Saturday, October 10th, 2009

NOTICE OF RACE

1. RULES

- 1.1 The regatta will be governed by the rules as defined in *The Racing Rules of Sailing* (RRS) 2009-2012, the prescriptions of US SAILING and by the Sailing Instructions.

2. ELIGIBILITY AND ENTRY

- 2.1 PHRF Spinnaker, Non-Spinnaker, Cruiser classes and One Design Classes.
2.2 All boats competing in PHRF classes must have a valid PHRF rating.
2.3 All PHRF boats shall have their sail numbers displayed in accordance with First Coast Sailing Association (FCSA) regulations which are available at www.sailjax.com.
2.4 One Design boats will race under the rules for their class.
2.5 Eligible boats may enter by completing the FCSA Standard Entry Form copy found on www.sailjax.com or fill out race day at the club.

Advance registration forms can be mailed with entry fee to:

Navy Jacksonville Yacht Club
PO Box 29
Naval Air Station
Jacksonville FL 32212-0029

3. SCHEDULE

- 3.1 0930-1100 Registration
 1100 Sailors meeting
 1200 Warning signal for first class
 ASAP Awards presentation at the end of races.

4. FEES

- 4.1 PHRF \$30.
4.2 One Design Classes \$10

5. SAILING INSTRUCTIONS

- 5.1** The sailing instructions will be available at 1030 on race day. Changes to this notice or the Sailing Instructions will be posted on the exterior bulletin board at NJYC on race day. Sailing Instructions will also be available from the Race Committee on the PHRF and One Design Committee Boats.
- 5.2** NJYC and the Race Committees will monitor Marine Channel 68 (72 is the back up frequency)

6. VENUE

- 6.1** The PHRF racing area will be in the St. Johns River as depicted on NOAA Chart 11492 between the Buckman Bridge to the south and the Fuller Warren Bridge to the north.
- 6.2** Flying Scot One Design course will be located in the St. Johns River approximately midway between Mulberry Cove and the Rudder Club.

7. THE COURSES

- 7.1** The courses to be sailed will be described and the skippers' meeting will be will be displayed on the committee boat.

8. PENALTY SYSTEM

- 8.1** A one or two 360 degree turns penalty will be used as specified in Rule 44.1 and 44.2.

9. SCORING

- 9.1** The Low-point Scoring System, Appendix A, Rule A4.1 of the racing rules, will apply for this regatta.
- 9.2** Results will be posted at NJYC and on www.sailjax.com.

10. PRIZES

- 10.1** First, second and third place prizes will be awarded in all classes. All competitors will be scored in their respective class. Race results will be used in the FCSA Fall Race Series scoring system.

11 SAFETY

- 11.1** All competitors are required to conform to the U.S. Coast Guard regulations and the RRS concerning personal floatation devices and other required equipment. All yachts are reminded that under fundamental Rule 4 "A boat is solely responsible for deciding whether or not to start or to continue racing."
- 11.2** Yachts shall not impede the passage of a vessel that can safely navigate only within a narrow channel or commercial fishing vessels while fishing or vessels with restricted ability to maneuver. Racing yachts interfering with such vessels are subject to protest by the Race Committee or contestants and possible disqualification.

12. BASE PASSES

- 12.1** A person from NJYC will be at the Yorktown Gate (main gate) from 9:30 to 10:30 am on the day of the race to help with base entrance. All persons entering the base must have a picture ID. All vehicles must have and provide proof of current registration and insurance.

13. INFORMATION

- 13.1** Low cost breakfast and refreshments will be served during registration at NJYC.
- 13.1** Social and awards after the race with food available. Docking is available on the southern face of F Dock. F Dock is the first dock as you approach Mulberry Cove Marina from the east, or as directed.
- 13.2** Point of contact: NJYC phone 904-778-0805, Steve Duve 904-565-9883



Navy Day Regatta

Navy Jacksonville Yacht Club

Saturday October 10th, 2009

PHRF FLEET SAILING INSTRUCTIONS

1. RULES

The regatta will be governed by the rules as defined in *The Racing Rules of Sailing 2009 – 2012* (hereafter referred to as the Racing Rules), and the *Performance Handicap Racing Fleet (PHRF) Regulations* of the First Coast Sailing Association (FCSA).

2. ENTRIES

Competitors may enter at any time prior to race day by delivering or mailing a completed First Coast Sailing Association (FCSA) Standard Entry Form along with the \$30 entry fee to:

Navy Jacksonville Yacht Club
Attention: Race Committee
PO Box 29
Naval Air Station
Jacksonville FL 32212-0029

Competitors may also register at Navy Jacksonville Yacht Club (NJYC) on race day from 0900-1030.

3. NOTICES TO COMPETITORS

Notices to competitors will be posted on the official notice board located on the south wall of NJYC facing the river (next to the sliding glass doors).

4. SIGNALS MADE ASHORE

Any signals made ashore will be displayed from the flagpole located on the south lawn of NJYC.

5. SCHEDULE and CLASS FLAGS

A Skippers' meeting will be held at 1100 on Saturday, October 10th, 2009 at NJYC. The warning signal for the first start will be 1200 or as soon as possible thereafter (allowing for preparation of the course). The warning signal for the second start will be given after each boat from the first start is either across the starting line, or has been scored DNS.

The class flag for the first start of the day will be the numeral 1; the class flag for the second start of the day will be the numeral 2. The Spinnaker Fleet will normally start first; the Non-spinnaker and Cruiser classes will normally start second together.

6. RACING AREA

The racing area will be in the St. Johns River as depicted on NOAA Chart 11492 between the Buckman Bridge to the south and the Fuller Warren Bridge to the north.

7. COURSES and MARKS

The course will be created by the Principal Race Officer (PRO) on race day using a combination of government navigation markers and inflatable markers. The course description will be displayed on the official notice board, on the white board at the Skippers' meeting, and on a white board on the Committee Boat.

8. STARTING AND FINISHING LINES; STARTING SYSTEM

The starting and finishing line will be the same line for this race (unless the course is changed or shortened by the PRO), and will be a straight line leading from an orange flag on the port side of the Committee Boat to either an inflatable yellow race marker or a designated government navigation marker.

The starting signals will be as described in Part 3, Rule 26 of the Racing Rules. Rule 30.1 shall be in effect as indicated by the "I" flag displayed on the port side of the committee boat.

9. TIME LIMIT

Yachts failing to cross the finish line within 60 minutes (corrected time) after the first boat to finish in their class shall be scored DNF (modification of Rule 35); boats failing to cross the start line within 10 minutes of their start signal will be scored DNS.

10. PROTESTS

Protests shall be delivered to the Race Committee at NJYC within 30 minutes from the time the Committee Boat is docked at Mulberry Cove Marina. The protest time limit and a list of protests received will be posted on the official notice board. Hearings will be held as soon as possible after racing in the approximate order in which they were filed.

11. SCORING

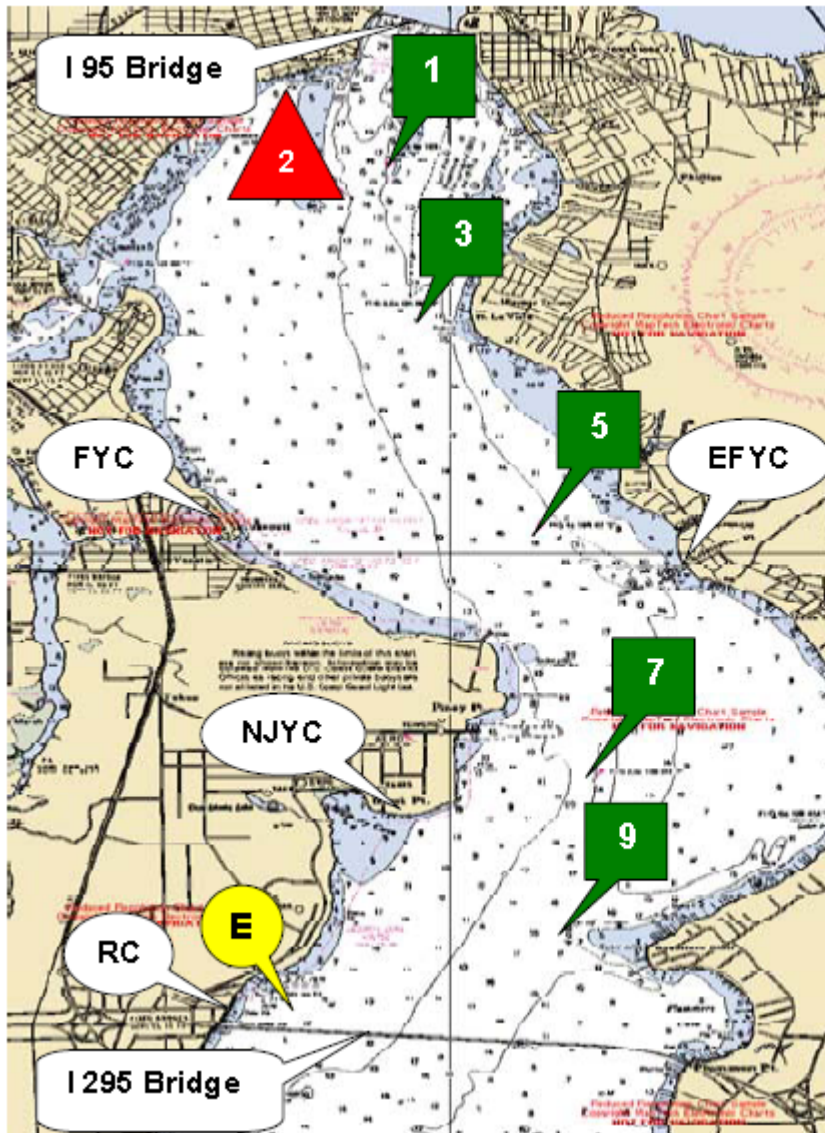
One race is scheduled for each class. This is race #3 of the FCSA Fall Series; finishing scores will be calculated into the series standings by FCSA.

Prizes will be awarded for 1st, 2nd, and 3rd place in all 3 classes; presentation will take place after the Race Committee has posted the official results in the official display case at NJYC.

12. ADDITIONAL INFORMATION

The Race Committee will monitor Marine VHF channel 68. The Race Committee requests that all racing vessels check in with the race committee by radio, and inform the Race Committee when retiring.

Sample River Chart with Marker Locations



River Mark G1
N30° 17.798'
W081° 40.440'

River Mark G3
N30° 16.723'
W081° 40.219'

River Mark G5
N30° 15.013'
W081° 39.470'

River Mark G7
N30° 13.312'
W081° 39.078'

River Mark G9
N30° 12.272'
W081° 39.241'

FCSA Mark "E"
N30° 11.700'
W081° 40.900'



Navy Day Regatta

Navy Jacksonville Yacht Club

Saturday October 10th, 2009

ONE DESIGN FLEET SAILING INSTRUCTIONS

1. RULES

The regatta will be governed by the rules as defined in *The Racing Rules of Sailing 2009 – 2012* (hereafter referred to as the Racing Rules), and the *Performance Handicap Racing Fleet (PHRF) Regulations* of the First Coast Sailing Association (FCSA).

2. ENTRIES

Competitors may enter at any time prior to race day by delivering or mailing a completed First Coast Sailing Association (FCSA) Standard Entry Form along with the \$10 entry fee to:

Navy Jacksonville Yacht Club
Attention: Race Committee
PO Box 29
Naval Air Station
Jacksonville FL 32212-0029

Competitors may also register at Navy Jacksonville Yacht Club (NJYC) on race day from 0900-1030.

3. NOTICES TO COMPETITORS

Any additional notices to competitors will be posted on the official notice board located on the south wall of NJYC facing the river (next to the sliding glass doors).

4. SIGNALS MADE ASHORE

Any signals made ashore will be displayed from the flagpole located on the south lawn of NJYC.

5. SCHEDULE and CLASS FLAGS

A Skippers' meeting will be held on the NJYC patio at 1100 on Saturday, October 10th, 2009. Skippers who have already registered are not required to attend the Skippers' meeting, and may receive course instructions from the One Design Committee Boat. The warning signal for the first race will be 1200 or as soon as possible thereafter (allowing for preparation of the course). The class flag for the Flying Scot fleet will be the numeral one.

One design fleets will run 5 races unless the Principal Race Officer determines otherwise due to weather and wind conditions. The class flag for the one design fleet will be the numeral 1.

6. RACING AREA

The one design racing area will be located on the western side of the St. Johns River between Mulberry Cove Marina and the Rudder Club.

7. COURSES and MARKS

The courses will be selected by the Principal Race Officer (PRO) on race day, based on currents and weather conditions. See the One Design Course Diagrams attached to these sailing instructions. The course selection for each race will be provided by the PRO at the Committee Boat.

8. TIME LIMITS

Yachts failing to cross the finish line within 20 minutes after the first boat to finish in their class shall be scored DNF (modification of Rule 35); boats failing to cross the start line within 5 minutes of their start signal will be scored DNS.

9. PROTESTS

Protests shall be delivered verbally to the Race Committee prior to the next start and must also be made in writing at NJYC within 30 minutes from the time the Committee Boat is docked at Mulberry Cove Marina. The protest time limit and a list of protests received will be posted on the official notice board. Hearings will be held as soon as possible after racing in the approximate order in which they were filed.

10. SCORING

Finishing scores will be forwarded to FCSA to be posted on the www.sailjax.com website.

Prizes will be awarded for 1st, 2nd, and 3rd place; presentation will take place at NJYC after the Race Committee has posted the official results in the official display case at NJYC.

11. ADDITIONAL INFORMATION

The Race Committee will monitor Marine VHF channel 68. However, primary method of communication with the one design Race Committee will be verbal.



Navy Jacksonville Yacht Club

2009 One Design Regatta Series

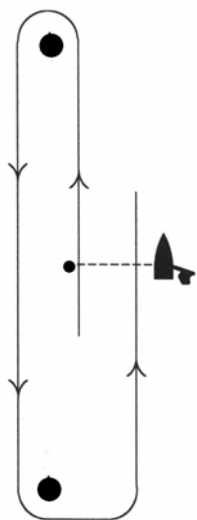
Courses

A=WINDWARD MARK

B=OFFSET MARK (G AND O COURSES)

C=LEEWARD MARK

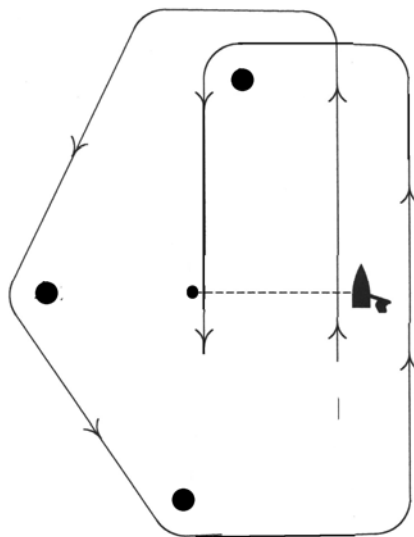
Wind



W*

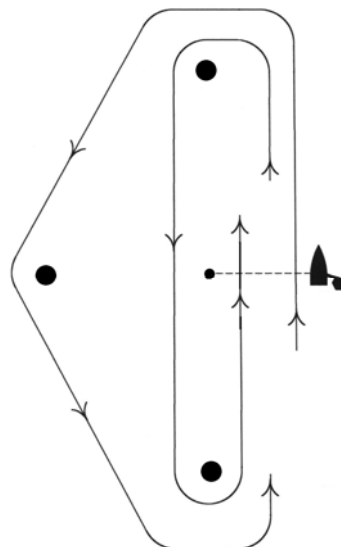
W1= S, A, C, F
W2= S, A, C, A, C, F

Wind



G*

Wind



O*

O1=S, A, B, C, F
O2=S, A, B, C, A, C, F

***Start/Finish Line Closed**