




Notice of Race

5th Annual FIRST COAST OFFSHORE CHALLENGE "Race into History" April 01st thru 04th, 2009 (www.fcoc2009.com)



The First Coast Offshore Challenge (FCOC) is a series of 3 races representing over 100 miles of offshore sailing with ports of call in two historic cities of Northeast Florida and Southeast Georgia. Race 1 begins Wednesday morning April 1st off St. Augustine, Florida for a day of long-leg buoy racing, followed by an awards party that evening. Race 2 will be Thursday April 2nd starting at the St. Augustine entrance buoy, heading out to sea to a fixed line of longitude and returning, followed by an awards party brunch the next day. Race 3 is a pursuit start race beginning late Friday April 3rd going overnight to St. Marys, Georgia, where the final awards ceremony and party will be held Saturday evening April 4th. Each awards party will include meals, beverages, and live musical entertainment. The Skippers Meeting is scheduled for 1900 March 31st at the St. Augustine Yacht Club. 

1 RULES The First Coast Offshore Challenge Series (the "Series") shall be governed by the "2009-2012 Racing Rules of Sailing" (RRS); the "2008-2009 ISAF Special Regulations Governing Offshore and Oceanic Equipment and Preparation, including US SAILING Prescriptions", except as modified by Section 5 of this Notice Of Race; the PHRF rules of the First Coast Sailing Association (www.sailjax.com); and class rules for any One-Design class established. The North Florida Cruising Club (NFCC) is the Organizing Authority for this Series.

Extracts from ISAF Rules for Category 4 may be viewed at (www.ussailing.org/safety/ISAF/0809_cat4mono.asp)

2 CLASS MEMBERSHIP The rules of all One-Design classes are altered so that membership in the class is not required.

3 ADVERTISING The Regatta is designated Category C under ISAF Regulation 20.

4 FEES The FCOC Event Fee of \$295 (\$345 after March 13) will cover entry and participation in all 3 races; meals, beverages, and entertainment for 3 persons after each race at the respective awards parties. Withdrawals after March 13 will forfeit \$75 of the entry fee. No refunds will be made for withdrawals after March 27. Entries tendered after March 27 are subject to rejection at the discretion of the Race Committee. There is a \$5/race US Sailing discount.

5 ELIGIBILITY AND ENTRY

- 5.1** The Series is open to all seaworthy cruising sailboats (ISAF Cat 4) that are not less than 24 feet in length. Smaller boats not less than 20 feet may be eligible on an individual basis at the discretion of the Race Committee.
- 5.2** The designated skipper shall be 18 years of age or older.
- 5.3** Minimum crew size shall be 2 (including skipper) except for the overnight race which requires a minimum crew size of 3.
- 5.4.** All one design classes shall comply with the maximum crew numbers in their class rules.
- 5.5** There will be no restriction on crew changes between races. Children aged 14 and under will not count as crew.
- 5.6** Modifying RRS 77, a yacht shall have identifying numbers or insignia on each mainsail, spinnaker, and overlapping headsail having an LP measurement exceeding 130% of J. The numbers or insignia shall be the same for each sail used while racing.
- 5.7** Yachts shall conform to all U.S. Federal regulations. Additionally, yachts shall conform to Category 4 requirements of the "2008-2009 ISAF Special Regulations Governing Offshore and Oceanic Equipment and Preparation, including US SAILING Prescriptions", except that the following sections are modified from "shall" to "should":

<u>3.08.2a</u> 'Hatches & Companionways'	<u>4.10</u> 'Radar Reflector, AIS'	<u>4.26</u> 'Storm...Sails'
<u>3.14.6a</u> 'Lifeline... Specifications'	<u>4.12</u> 'Safety Equipment Location Chart'	<u>5.01</u> 'Lifejacket'
<u>3.27</u> 'Navigation Lights'	<u>4.22</u> 'Lifebuoys'	<u>5.09</u> 'Annual MOB Practice'
<u>3.29</u> 'Communications Equipment...'	<u>4.23</u> 'Pyrotechnic and Light Signals'	

5.8 All participating yachts shall be provisioned with the following:

- a) Radio – a 25 watt minimum VHF transmitter / receiver with a manufacturer's recommended antenna (masthead recommended). The radio must at least be capable of tuning to channels 9, 13, 16, 22A, 68, 69, 71, and 72.
- b) GPS – a GPS device at least capable of displaying real-time latitude and longitude location data.

6 SELF-STEERING Cruising Class yachts may be sailed with assistance of self-steering gear, electric or wind (modifies RRS 52).

7 ENTRY FORMS AND OTHER DOCUMENTATION Prior to racing, each yacht shall be registered and shall submit the proper Fee; a Crew Declaration form including a landside emergency contact (which may be updated at the Skippers Meeting); and a copy of a current PHRF rating certificate (if not issued by FCSA) for review and possible adjustment to conform to FCSA ratings. Obtain forms from: (www.fcoc2009.com) or link from (www.sailjax.com)

8 CLASSES AND DIVISIONS Classes will be established for PHRF Spinnaker, PHRF Non-Spinnaker, PHRF Cruising, Multi-hull, and One Design yachts. Cruising Class yachts may fly a spinnaker if declared prior to the Skippers Meeting, but with a -12 sec/nm rating adjustment applied for all three races. Yachts using performance sail materials (non-Dacron) cannot compete in Cruising Class.

9 PRIZES Trophies and flags for individual races will be awarded for 1st, 2nd, and 3rd place finishers in each class or division of class. Series Trophies will be awarded for 1st thru 3rd place and up to 5th place depending on the class size.

10 SAILING INSTRUCTIONS Sailing Instructions and scratch sheet will be available on the Race Web Site and at the Skippers' Meeting. Race Committee questions: Adam Norwood (904) 237-7785. Other event questions: Guy Anderson (904) 396-6382.



SAILING INSTRUCTIONS

FIRST COAST OFFSHORE CHALLENGE


April 1st thru 4th, 2009

5th Annual "Race into History"

www.fcoc2009.com



1 RULES

1.1 The First Coast Offshore Challenge Series (the "Series") shall be governed by the "2009-2012 Racing Rules of Sailing" (RRS); the "2008-2009 ISAF Special Regulations Governing Offshore and Oceanic Equipment and Preparation, including US SAILING Prescriptions", except as modified by Section 5 of the Notice Of Race; the PHRF rules of the First Coast Sailing Association (www.sailjax.com); class rules for any One-Design class established; the Notice of Race (except as modified by these Sailing Instructions); and the Sailing Instructions. The North Florida Cruising Club (NFCC) is the Organizing Authority for this Series. The St. Augustine Yacht Club is graciously providing their facility as the primary venue for the Series. 

For extracts from ISAF Rules for Category 4, see: www.ussailing.org/safety/ISAF/0809_cat4mono.asp.

1.2 ALTERATIONS TO THE RULES

The following sections of these Sailing Instructions alter provisions of the RRS:

1.2.1 Sailing during the hours of darkness – Sailing Instructions 1.3

1.2.2 Use of Engine – Sailing Instructions 1.5

1.2.3 Recalls on VHF – Sailing Instructions 1.6.1 and 3.3

1.2.4 Failure to start within time limit – Sailing Instructions 9.5.4

1.2.5 Time limit – Sailing Instructions 11

1.2.6 Rules governing the flying of a protest flag – Sailing Instructions 13.1

1.2.7 Establishment of arbitration procedures – Sailing Instructions 13.4

1.2.8 Steering Assistance – Notice of Race 6

1.2.9 Even if not racing, if the Race Committee observes a participating yacht obstructing the passage of a vessel not involved in the Regatta and in violation of the International Regulations for Preventing Collisions at Sea, the Race Committee may proceed against the yacht under RRS 60.2.

1.3 SAILING DURING THE HOURS OF DARKNESS - Between sunset and sunrise, the Rules contained in RRS Part 2 will cease to govern the race which will be continued under the corresponding parts of the International Regulations for Preventing Collisions at Sea. An infringement of the IRPCS during that time will be considered as an infringement of RRS Part 2.

1.4 TIME - All published times used in association with the race will be Eastern Daylight Saving Time (UTC minus 4 hours) in 24-hour format. Official Race Committee time will be synchronized with the US Naval Observatory Master Clock telephone voice announcer: 202-762-1401 or 202-762-1069.

1.5 USE OF ENGINE

1.5.1 In accordance with RRS 42.3(h) - In an emergency, an engine may be used when appropriate to avoid collision or in grave emergency. Full details shall be given to the Protest Committee who, after a hearing, may impose a penalty or, when it judges significant advantage was gained, disqualify the yacht.

1.5.2 An engine may be used to supply power for charging batteries, pumping, weighing anchor, or other necessary purposes, provided mechanical propulsion is not engaged.

1.6 RECALLS

1.6.1 The Race Committee will *attempt* to announce sail numbers of premature starters on VHF Channel 72.

1.6.2 Altering RRS Rule 29.2, in the event of a general recall, the First Substitute will be raised (two sounds), and then lowered (one sound) one minute before the warning signal for the next scheduled class. The new warning signal for the class which has had a general recall will be 10 minutes after the start of the last class (as described in 9.5 of these instructions). If more than one class is subject to a general recall, the second of these classes will start after the first and so on. *"If your class is recalled, go to the end of the line for new start."*

2.0 RADIO COMMUNICATION - The Race Committee will monitor VHF Channel 72 during races, and may, as the circumstances dictate, communicate with a yacht while racing.

3 NOTICES TO COMPETITORS

- 3.1 Prior to the Tuesday Skippers' Meeting, Notices to Competitors will be posted on the regatta registration website (link thru www.FCOC2009.com). After that, duplicates and new Notices will be posted on the exterior bulletin board of the St. Augustine Yacht Club. Whenever possible, the times and venues of protest hearings and other general information will be given on VHF Channel 72.
- 3.2 Changes to the sailing instructions will be posted at least 3 hours before the scheduled start of a race.
- 3.3 All VHF announcements are only an aid to competitors and are supplementary to any flag signals or official notices. Failure to make any announcement via VHF will not be a grounds for redress.

4 SIGNALS MADE ASHORE - No signals will be made ashore.

5 RACING AREA - The racing area will be in the Atlantic Ocean as depicted on NOAA Chart 11480.

6 SCHEDULE OF THE SERIES

<u>6.1</u>	<u>Race</u>	<u>Date</u>	<u>Time of First Warning Signal</u>
	1. St. Augustine Buoy Race	01 April 2009	0925
	2. St. Augustine Out-and-Back	02 April 2009	0925
	3. St. Augustine to St. Marys	03 April 2009	(See 6.2)

- 6.2 For Race 3, each yacht will be assigned a start time based on its handicap. The last start for the fastest rated yacht will be at sunset as predicted for St. Augustine by the US Naval Observatory.

7 COURSES - All coordinates, courses, and distances are approximate and are not for navigational use.

7.1 Race 1: St. Augustine Buoy Race

Start: Vicinity of St. Augustine Entrance Buoy 'STA' @ N 29° 54.91' – W 81° 15.28'.

Course: 45-45-90 triangle buoy course with 2.5nm long leg and 1.75nm short legs; consisting of STA and two inflated buoys (designated 'A', 'B', and 'C' depending on the course selected - see Race 1 Course Sketch). The course selection will be posted on the starboard side of the RC start boat. Round all marks to port.

- Cruising Classes (18.0 nm)... 3 circuits: (start)C -A-B-C, -A-B-C, -A-B-C(finish)
- Non-Spinnaker Class (20.5 nm): (start)C -A-C, -A-B-C, -B-C, -A-B-C(finish)
- Spinnaker Class (22.0 nm): (start)C -A-C, -A-B-C, -A-C, -A-B-C(finish)

Shortening Course: If wind conditions dictate, the race committee may shorten course by displaying the "S" flag. The shortened course will consist of elimination of the final -A-B-C circuit for all classes.



7.2 Race 2: St. Augustine Out-and-Back Race

Start: St. Augustine Entrance Buoy 'STA' @ N 29° 54.91' – W 81° 15.28' (*RC boat on starboard, STA to port*).

Head: Easterly for about 15nm for Cruising and Non-Spinnaker Classes; about 18.4nm for Spinnaker Classes.

Turn: Longitude W 80° 58.00' for Cruising and Non-Spinnaker Classes; W 80° 54.00' for Spinnaker Classes.

Finish: St. Augustine Entrance Buoy 'STA' @ N 29° 54.91' – W 81° 15.28' (*leave to port*) –

Each yacht shall record its own finish time when it is within 300 feet of STA, and STA bears 90° magnetic.

7.3 Race 3: St. Augustine to St. Marys Race

Start: St. Augustine Entrance Buoy 'STA' @ N 29° 54.91' – W 81° 15.28' (*RC boat on starboard, STA to port*).

Head: 001° True for a distance of about 47.9 nm.

Finish: St. Marys River Entrance Buoy 'STM' @ N 30° 42.90' – W 81° 14.64' (*leave to port*) –


Each yacht shall record its own finish time when it is within 300 feet of STM, and STM bears 180° magnetic.

8 CLASS FLAGS

<u>Class</u>	<u>Flag Color</u>
---------------------	--------------------------

Cruising	Pink
All Others	Gold

9 THE START

- 9.1** The starting line will be between an orange flag displayed on the RC boat and a pin end buoy or the St. Augustine entrance buoy 'STA'.
- 9.2** Once the RC boat is on station at the start line (indicated by display of the orange start line flag), each yacht shall check in with the Race Committee prior to the warning signal of the first class in Races 1 and 2, and no earlier than 20 minutes prior to its individual start time for Race 3, by sailing past the stern of the RC boat and hailing its sail number. Alternatively, yachts may hail the RC boat on VHF channel 72. Yachts failing to check in may be scored DNC.
- 9.3** A yacht shall disengage all engine propulsion systems prior to the preparatory flag for its class, or otherwise within 4 minutes of its start time.
- 9.4** Rule 30.1 "I Flag Rule" (sometimes called the 'Round-an-End Rule') will be in effect for all races. 

9.5 Races 1 and 2

9.5.1 Races will be started using RRS Rule 26: warning signal given 5 minutes before the starting signal.

5 minutes before start: Raise Class flag, sound short horn

4 minutes before start: Raise Preparatory flag 'P', sound short horn

1 minutes before start: Lower Preparatory flag 'P', sound long horn

0 minutes before start: Lower Class flag, sound short horn



'P' = Preparatory

'X' = Over Early

9.5.2 The warning signal for succeeding starts will be made 10 minutes after the start of the preceding class.

9.5.3 Yachts whose warning signal has not been made shall avoid interfering with yachts whose preparatory signal has been made (RRS 23.1).

9.5.4 Yachts that have not properly started within 15 minutes of the final class start may be scored DNS.

9.6 Race 3

9.6.1 Each yacht will be assigned a start time based on its PHRF handicap. The last start for the fastest rated yacht will be at sunset as predicted by the US Naval Observatory for St. Augustine. A list of individual start times will be published at the Tuesday Skippers' Meeting.

9.6.2 Yachts shall avoid the starting area prior to 20 minutes before their assigned start time.

9.6.3 No timed start signal flags (or associated horns) will be displayed (or sounded) from the RC boat, except that the race committee will implement RRS 29.1 - using the 'X' flag to indicate individual recalls.

9.7 RC Boat Not on Station

In the case that the RC Boat is unable to come out to the start area and set a start line as detailed in 9.1, the following start procedure will apply instead:

9.7.1 - Race 2 – Using a timepiece that is synchronized with USNO time (refer to 1.4), a yacht shall record its own start time (to the second) when it is within 300 feet of St. Augustine entrance buoy STA, and STA bears 000° magnetic. Yachts failing to cross the start line between the following times may be scored DNS.

No Cruising Class yacht shall start before 09:45:00 nor after 10:15:00.

No other Class yacht shall start before 09:30:00 nor after 09:45:00.

A yacht shall report its start time to the race committee when reporting its finish time (refer to 10.4).

9.7.2 - Race 3 - No yacht shall start prior to its published individual start time (refer to 9.6) as synchronized with USNO time (refer to 1.4). A yacht shall have started when it is within 300 feet of St. Augustine entrance buoy STA, and STA bears 270° magnetic.

10 THE FINISH

- 10.1** When the RC Boat is on station for taking finish times it will display a solid blue flag indicating such. The finish line will connect between a solid orange flag displayed on the RC boat and the designated finish mark.
- 10.2** When finishing during conditions of low visibility, a yacht shall make every attempt to identify itself to the RC boat by shining a light on its sail numbers, or by hailing the RC boat on VHF channel 72, or by other means.
- 10.3** For Races 2 and 3, there will be no RC boat on station at the finish. Using a timepiece that is synchronized with USNO time (refer to 1.4), a yacht shall record its own finish time (to the second) as described in 7.2 and 7.3. As a courtesy, the finishing yacht should simultaneously sound a horn to indicate it has finished racing. When possible, note the sail numbers and finishing times of other nearby yachts (hence the courtesy horn).

10.4 As soon as practical after finishing, a yacht shall report its finish time to the Race Committee via VHF channel 72. If unable to communicate by radio for this purpose, a yacht may telephone the RC at 904-237-7785. In no case shall a yacht fail to report its time directly to the RC any later than 1 hour following its finish (telephone messages accepted). The RC will be available via VHF and at each after-race event area for this purpose.

11 **TIME LIMITS** - Modifying RRS 35, there will be a fixed time limit for Race 3 of 16:00:00 Saturday; yachts finishing after the time limit will be scored DNF.

12 **REPORTING PENALTY TURNS** - A yacht that has taken a penalty under RRS 44 shall report such to the Race Committee immediately after finishing by hailing the RC boat or when otherwise reporting its finish time.

13 **PROTESTS AND REQUESTS FOR REDRESS**

13.1 A protest flag need not be displayed continuously until the finish, provided it is initially displayed for at least 1/2 hour (amends RRS Rule 61.1).

13.2 A Yacht intending to file a protest shall notify the Race Committee of that intent immediately after finishing by hailing the RC boat or when otherwise reporting its finish time. At that time, the yacht shall clearly indicate its intended means and estimated time of filing the physical documents with the Race Committee.

13.3 Protests shall be filed on an official US SAILING protest form with the Race Committee after finishing and as soon as is possible. Evidence of deliberate delay in filing shall constitute cause for rejection of the protest. Yachts protesting and protested will be informed of the time and place of the protest hearing.

13.4 ARBITRATION - For protests involving an alleged breach of the rules of Part 2 of the RRS, an optional short arbitration hearing may be held prior to proceeding with an official protest hearing (modifies RRS Part 5, B).

14 **SERIES SCORING**

14.1 Race and Series scoring will be in accordance with RRS Appendix A, Low Point System.

14.2 Two scored races are required to constitute the Series.

14.3 Modifying RRS Appendix A2, there will be no excluded scores.

15 **RACE RESULTS** - Results for each race will be announced at its respective after-event party. Overall Regatta Results will also be e-mailed to the addresses given on the registration documents. Any request for clarification of the results shall be raised as soon as possible, and in any case, within 10 days of e-mail publication. Results will also be posted on the regatta registration website and on www.sailjax.com.

16 **RESPONSIBILITY AND LIABILITY**

16.1 **The safety of a yacht or sailing vessel and its crew, the decision as to whether or not to start, and having started, whether or not to continue is the sole and exclusive responsibility of each yacht's designated skipper.** *For the purpose of subsequent articles, the term "yacht" shall mean the designated skipper as representative of the owner, and in the absence of the designated skipper, members of the remaining crew.*

16.2 A yacht is entirely responsible for its own safety, whether afloat or ashore, and nothing, whether in the Notice of Race or Sailing Instructions or anywhere else, reduces this responsibility.

16.3 It is for the yacht to decide whether it is fit to sail in the conditions in which it will find itself. By going to sea the yacht confirms that it is fit for those conditions and its crew is competent to sail and compete in them.

16.4 The yacht is required to hold adequate insurance and in particular to hold insurance against third party claims.

16.5 Nothing done by the organizers can reduce the responsibility of the yacht.

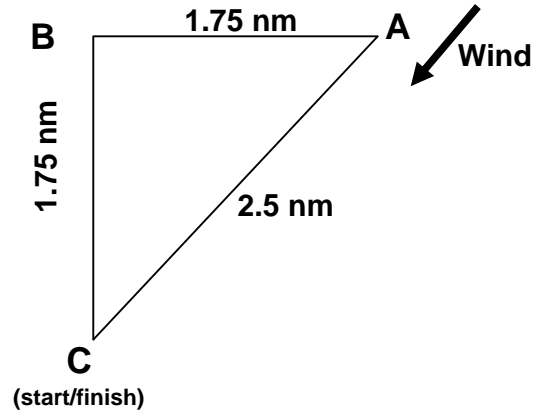
16.6 The provision of patrol boats does not relieve the yacht of its responsibilities.

16.7 The yacht is responsible for ensuring that it is equipped and seaworthy so as to be able to face extremes of weather; that there is a crew sufficient in number, experience, and fitness to withstand such weather; and that the safety equipment is properly maintained, stowed, and in date and that crew members know how to use it.

16.8 The yacht is responsible for adhering to all local, state, federal, and international laws and regulations governing the operation in the body of waters where the race and race events shall be held. This includes conformance to the United States Coast Guard (USCG) Safety Regulations.

16.9 Inspection of a yacht by the Race Committee does not reduce the responsibilities of the yacht set out here.

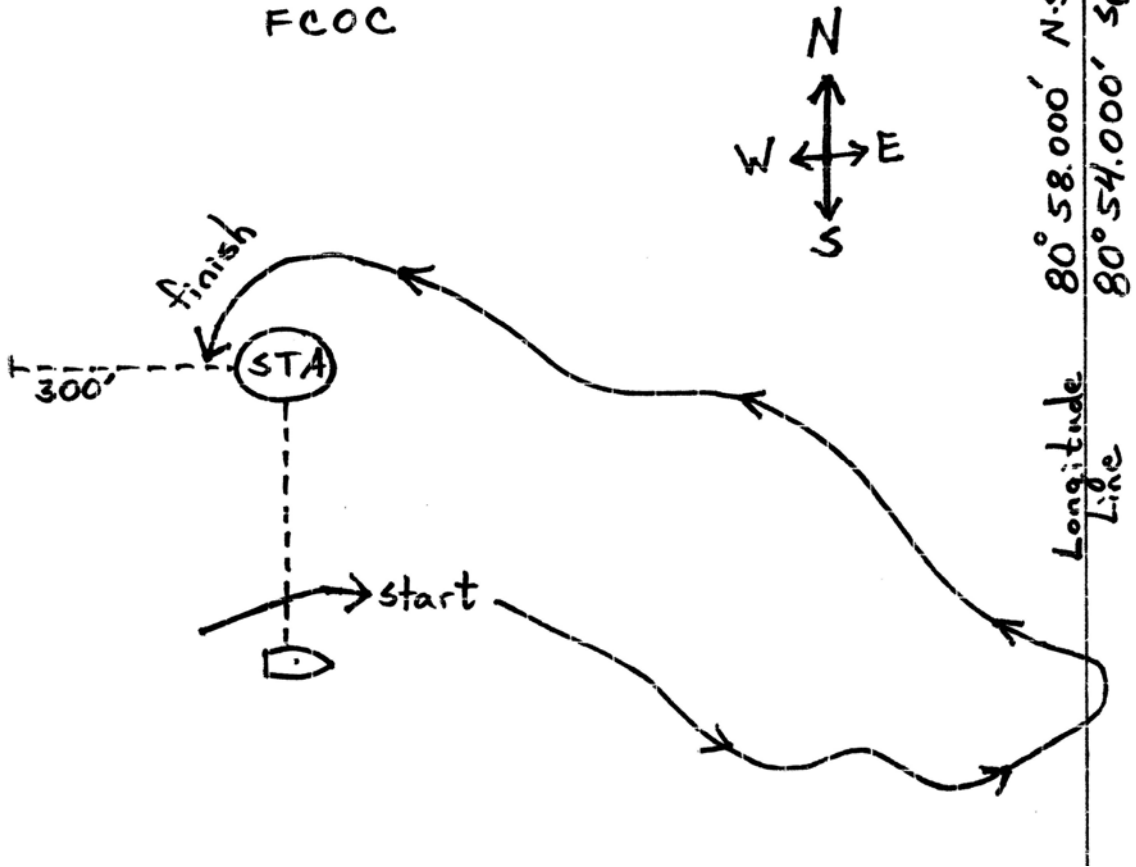
FCOC - Race 1
Offshore Triangle Courses
 (45 - 90 - 45)



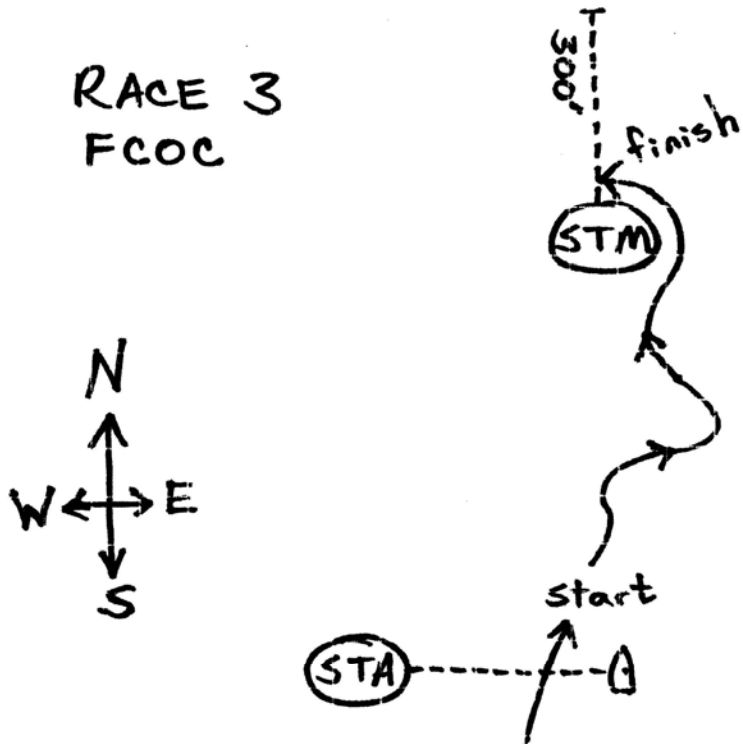
Shading represents
 STA - position from
 2009 USCG light list

Course ID	Wind Direction	Approximate Position "C"	Approximate Position "A"	Approximate Position "B"	Approximate Magnetic Bearing				
					<i>From- to-</i>				
					C to A	A to C	A to B	B to C	C to B
D	NNE	N 29° 54.91' W 81° 15.28'	N 29° 57.22' W 81° 14.19'	N 29° 56.54' W 81° 16.06'	028	208	253	163	343
G	NE	N 29° 54.91' W 81° 15.28'	N 29° 56.67' W 81° 13.25'	N 29° 56.67' W 81° 15.28'	051	231	276	186	006
H	ENE	N 29° 54.91' W 81° 15.28'	N 29° 55.86' W 81° 12.63'	N 29° 56.53' W 81° 14.50'	074	254	298	209	029
I	E	N 29° 54.91' W 81° 15.28'	N 29° 54.91' W 81° 12.40'	N 29° 56.15' W 81° 13.84'	096	276	321	231	051
J	ESE	N 29° 54.91' W 81° 15.28'	N 29° 53.96' W 81° 12.63'	N 29° 55.58' W 81° 13.41'	118	298	343	254	074
K	SE	N 29° 54.91' W 81° 15.28'	N 29° 53.15' W 81° 13.25'	N 29° 54.91' W 81° 13.25'	141	321	006	276	096
L	SSE	N 29° 54.91' W 81° 15.28'	N 29° 52.60' W 81° 14.19'	N 29° 54.23' W 81° 13.42'	164	344	028	299	119
M	S	N 29° 54.91' W 81° 15.28'	N 29° 52.41' W 81° 15.28'	N 29° 53.66' W 81° 13.86'	186	006	051	321	141
P	NW	N 29° 54.91' W 81° 13.25'	N 29° 56.67' W 81° 15.28'	N 29° 54.91' W 81° 15.28'	321	141	186	096	276
R	NNW	N 29° 54.23' W 81° 13.42'	N 29° 56.54' W 81° 14.51'	N 29° 54.91' W 81° 15.28'	344	164	208	119	299
T	N	N 29° 53.66' W 81° 13.84'	N 29° 56.16' W 81° 13.84'	N 29° 54.91' W 81° 15.28'	006	186	231	141	321
U	SSW	N 29° 57.22' W 81° 14.19'	N 29° 54.91' W 81° 15.28'	N 29° 55.59' W 81° 13.41'	208	028	073	343	163
V	SW	N 29° 56.67' W 81° 13.25'	N 29° 54.91' W 81° 15.28'	N 29° 54.91' W 81° 13.25'	231	051	096	006	186
X	WSW	N 29° 55.86' W 81° 12.63'	N 29° 54.91' W 81° 15.28'	N 29° 54.24' W 81° 13.41'	253	073	118	029	209
Y	W	N 29° 54.91' W 81° 12.40'	N 29° 54.91' W 81° 15.28'	N 29° 53.66' W 81° 13.85'	276	096	141	051	231
Z	WNW	N 29° 53.96' W 81° 12.63'	N 29° 54.91' W 81° 15.28'	N 29° 53.29' W 81° 14.50'	298	118	163	074	254

RACE 2
FCOC



RACE 3
FCOC



Predicted Tides, Sun, Moon - 2009

St. Augustine City Dock 29, 53.5 - 81, 18.6 (St. Augustine Municipal Marina)

Date	DoW	EDT	Height		EDT	Height		EDT	Height		EDT	Height	
29-Mar	Sun	5:12	-0.1	L	11:12	4.6	H	17:18	-0.3	L	23:34	5.3	H
30-Mar	Mon	5:59	0.1	L	11:58	4.4	H	18:08	-0.2	L			
31-Mar	Tue	0:24	5.2	H	6:52	0.3	L	12:48	4.3	H	18:58	0.1	L
1-Apr	Wed	1:18	5.1	H	7:52	0.5	L	13:44	4.3	H	20:01	0.3	L
2-Apr	Thu	2:19	5.0	H	8:56	0.6	L	14:47	4.2	H	21:09	0.4	L
3-Apr	Fri	3:26	4.9	H	10:01	0.5	L	15:57	4.3	H	22:18	0.4	L
4-Apr	Sat	4:36	4.9	H	11:03	0.4	L	17:08	4.5	H	23:24	0.3	L
5-Apr	Sun	5:41	4.9	H	12:01	0.2	L	18:12	4.8	H			

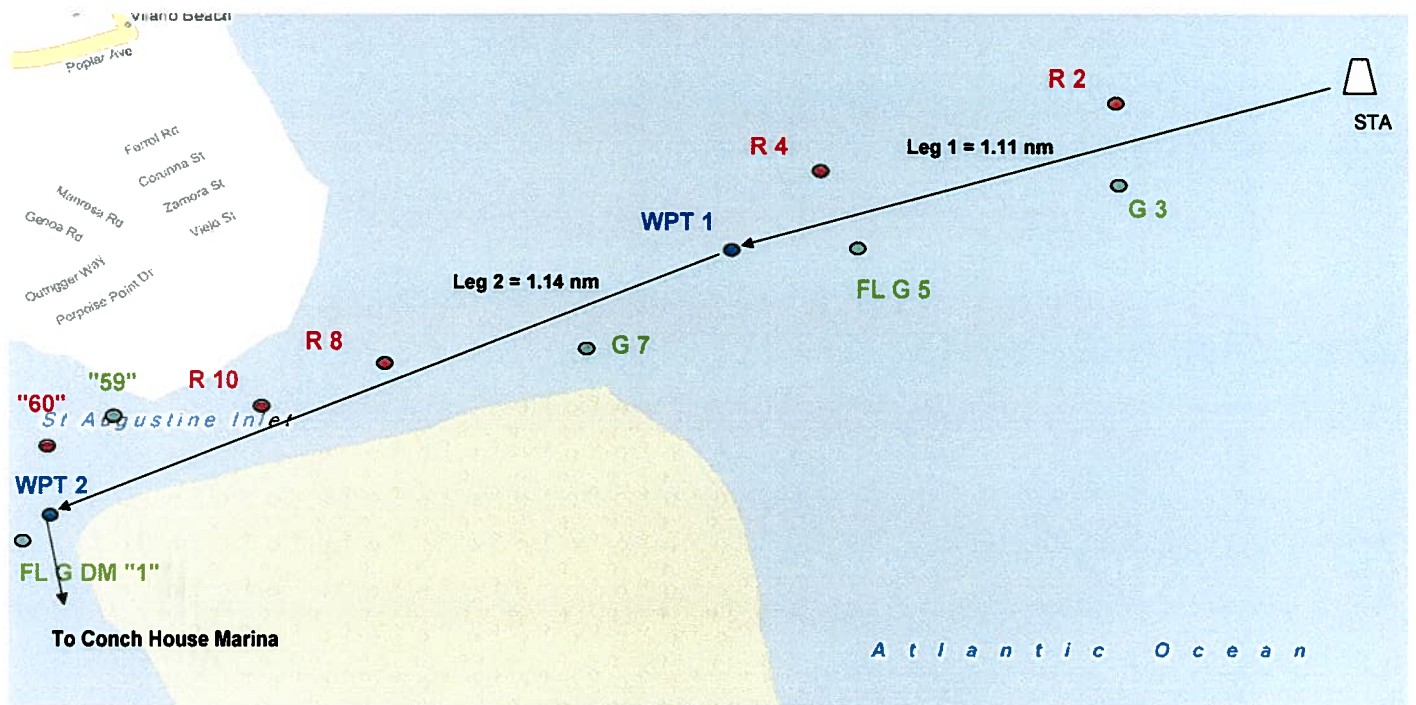
St. Marys (Town) 30, 43.2 - 81, 32.9 (Lang's Marina)

Date	DoW	EDT	Height		EDT	Height		EDT	Height		EDT	Height	
2-Apr	Thu	3:17	6.6	H	9:40	0.7	L	15:45	5.5	H	21:53	0.4	L
3-Apr	Fri	4:24	6.4	H	10:45	0.6	L	16:55	5.6	H	23:02	0.4	L
4-Apr	Sat	5:34	6.4	H	11:47	0.5	L	18:06	5.9	H			
5-Apr	Sun	12:08	0.3	L	6:39	6.5	H	12:45	0.2	L	19:10	6.3	H
6-Apr	Mon	1:11	0.1	L	7:38	6.6	H	13:40	0.0	L	20:07	6.7	H
7-Apr	Tue	2:10	-0.1	L	8:30	6.7	H	14:30	-0.2	L	20:59	7.1	H

The Sun and the Moon (St. Augustine)

Date	Sunrise, EDT	Sunset, EDT	Moonrise, EDT	Moonset, EDT	
28-Mar	07:19	07:42	08:11	22:05	
29-Mar	07:18	07:42	08:52	23:12	
30-Mar	07:17	07:43	09:39		
31-Mar	07:16	07:43	10:34	00:20	
1-Apr	07:14	07:44	11:36	01:24	
2-Apr	07:13	07:45	12:43	02:22	1-Qtr
3-Apr	07:12	07:45	13:51	03:12	
4-Apr	07:11	07:47	14:58	03:59	
5-Apr	07:10	07:46	16:04	04:34	
6-Apr	07:09	07:47	17:07	05:09	

St Augustine Inlet Buoy Locations 9-Mar-09



<u>Bouy</u>	<u>Lat</u>	<u>Long</u>
STA	N 29° 54.95'	W 81° 15.22'
R 2	N 29° 54.96'	W 81° 15.65'
R 4	N 29° 54.90'	W 81° 16.31'
R 8	N 29° 54.58'	W 81° 17.21'
R 10	N 29° 54.52'	W 81° 17.39'
G 3	N 29° 54.82'	W 81° 15.70'
FIG 5	N 29° 54.75'	W 81° 16.27'
G 7	N 29° 54.62'	W 81° 16.86'
WPT 1	N 29° 54.81'	W 81° 16.48'
WPT 2	N 29° 54.36'	W 81° 17.70'